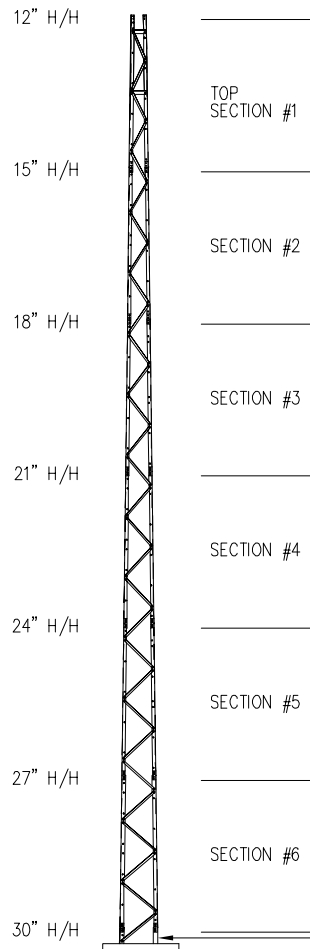


60FT S100 SUPERTITAN TOWER



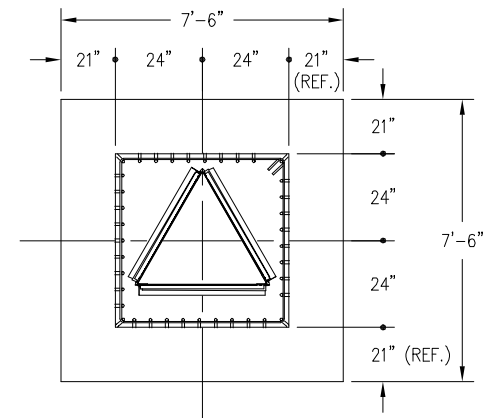
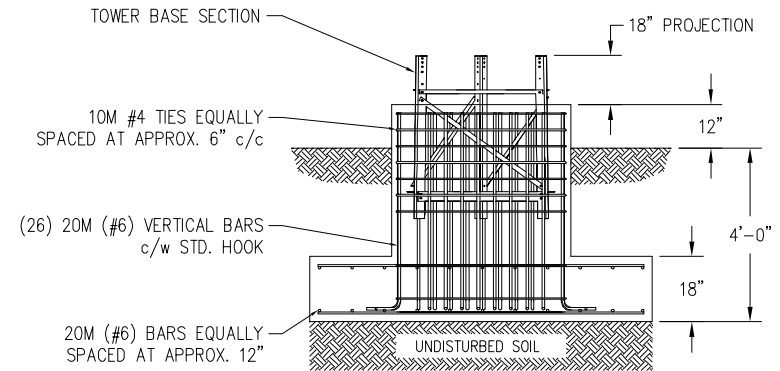
C A N A D A	MAXIMUM ALLOWABLE ANTENNA AREA – PER CSA–S37–01								
	ROUND ANTENNA MEMBER / FLAT ANTENNA MEMBER								
	CLASS 1 (10mm ICE)			CLASS 1 (25mm ICE)			CLASS 3 (25mm ICE)		
	350Pa	450Pa	550Pa	350Pa	450Pa	550Pa	350Pa	450Pa	550Pa
	12/8	3/2	--/--	10/7	3/2	--/--	25/17	14/9	6/4

FOUNDATION LOADS:
MAX. OVERTURNING MOMENT (K*FT) =
MAX. SHEAR (kips) =
MAX. AXIAL (kips) =

5' EMBEDMENT SECTION
INCLUDED IN KITS

FOUNDATION DESIGN (NORMAL DRY SOIL)

DESIGN ASSUMES THAT FROST DEPTH IS LESS THAN 4'-0"




CUBIC YARDS OF CONCRETE		
PAD CONC VOL.	PIER CONC VOL.	TOTAL VOL.
3.1	2.1	5.2

CONFIDENTIAL: ALL INTELLECTUAL PROPERTY RIGHTS HEREIN ARE THE PROPERTY OF TRYLON MANUFACTURING COMPANY LTD. ALL DUPLICATION, RECORDING, DISCLOSURE OR USE IS PROHIBITED WITHOUT WRITTEN CONSENT OF TRYLON MANUFACTURING COMPANY LTD.

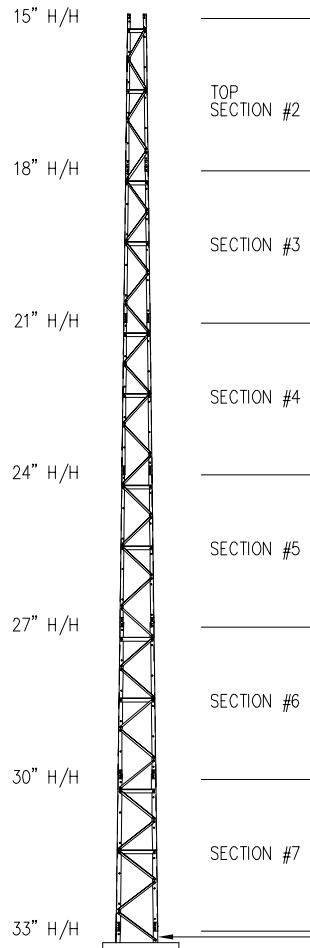


CUSTOMER:		SITE:		SCALE: 100.000	
DATE: 16 FEB 07		BY: MRH		CHK: APP:	
TITLE: 60' S100 SUPERTITAN TOWER				DRAWING NO. 000001.620.0298	

NOTES: 1) KNOCK-DOWN PART NUMBER 5.94.0100.060.
2) PRE-ASSEMBLED PART NUMBER: 5.95.0100.060.
3) ANTENNA LOADS ARE CENTRALLY LOCATED AND BALANCED, 3-FT OR LESS ABOVE THE TOWER TOP.
4) WIND LOADING ASSUMES (1) 1/2" TRANSMISSION LINE PER 10 SQ.FT. OF ROUND MEMBER ANTENNA AREA.

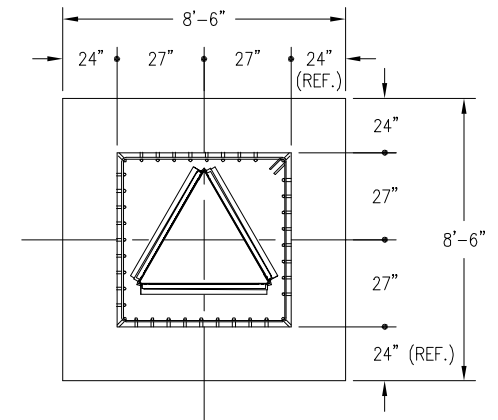
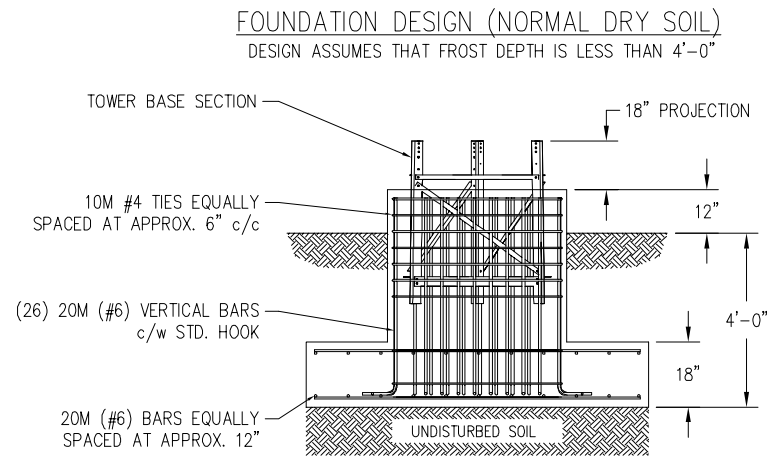
					 TRYLON TSE
					<div>CUSTOMER:</div> <div>SITE:</div> <div>SCALE: 100.000</div>
					<div>DATE: 16 FEB 07</div> <div>BY: MRH</div> <div>CHK:</div> <div>APP:</div>
					<div>TITLE: 60' S100 SUPERTITAN TOWER</div> <div>DRAWING NO. 000001.620.0298</div>
REV.	REV. BY:	CHK. BY:	DESCRIPTION	DATE	

60FT S200 SUPERTITAN TOWER



C A N A D A	MAXIMUM ALLOWABLE ANTENNA AREA – PER CSA–S37–01								
	ROUND ANTENNA MEMBER / FLAT ANTENNA MEMBER								
	CLASS 1 (10mm ICE)			CLASS 1 (25mm ICE)			CLASS 3 (25mm ICE)		
	350Pa	450Pa	550Pa	350Pa	450Pa	550Pa	350Pa	450Pa	550Pa
	27/19	17/12	10/7	25/17	17/12	10/7	42/28	28/19	19/13

FOUNDATION LOADS:
 MAX. OVERTURNING MOMENT (K*FT) =
 MAX. SHEAR (kips) =
 MAX. AXIAL (kips) =




CUBIC YARDS OF CONCRETE		
PAD CONC VOL.	PIER CONC VOL.	TOTAL VOL.
4.0	2.6	6.6

CONFIDENTIAL: ALL INTELLECTUAL PROPERTY RIGHTS HEREIN ARE THE PROPERTY OF TRYLON MANUFACTURING COMPANY LTD. ALL DUPLICATION, RECORDING, DISCLOSURE OR USE IS PROHIBITED WITHOUT WRITTEN CONSENT OF TRYLON MANUFACTURING COMPANY LTD.

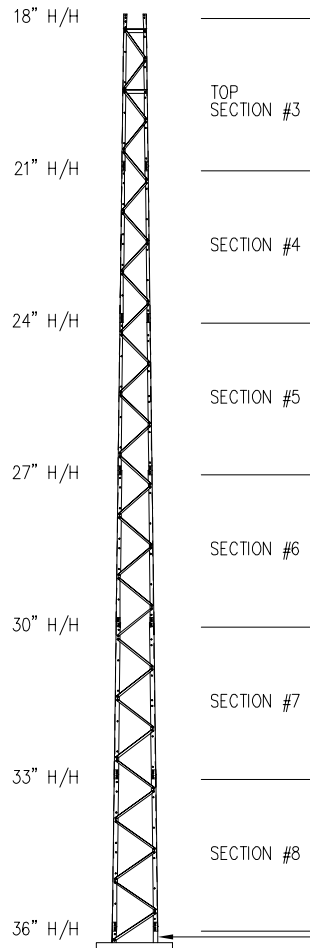


CUSTOMER:		SITE:		SCALE: 100.000	
DATE: 16 FEB 07		BY: MRH		CHK: APP:	
TITLE: 60' S200 SUPERTITAN TOWER				DRAWING NO. 000001.620.0299	

NOTES: 1) KNOCK-DOWN PART NUMBER 5.94.0200.060.
2) PRE-ASSEMBLED PART NUMBER: 5.95.0200.060.
3) ANTENNA LOADS ARE CENTRALLY LOCATED AND BALANCED, 3-FT OR LESS ABOVE THE TOWER TOP.
4) WIND LOADING ASSUMES (1) 1/2" TRANSMISSION LINE PER 10 SQ.FT. OF ROUND MEMBER ANTENNA AREA.

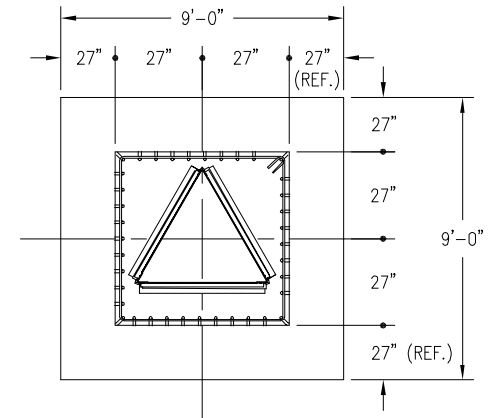
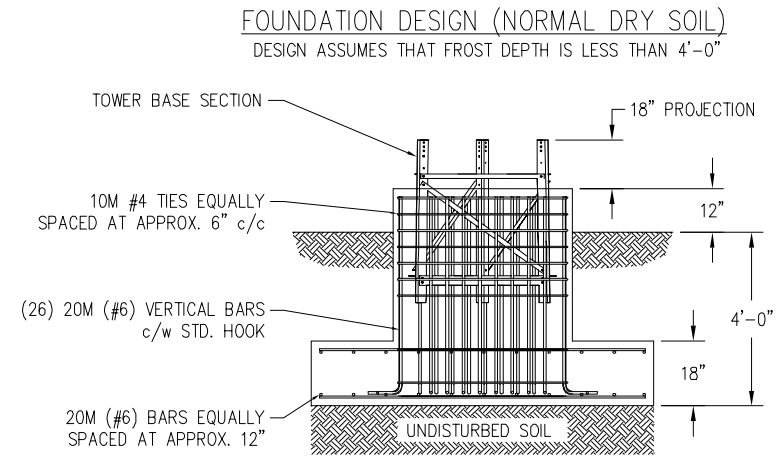
					 TRYLON TSE			
					CUSTOMER:	SITE:	SCALE:	100.000
					DATE:	BY:	CHK:	APP:
					16 FEB 07	MRH		
					TITLE:			DRAWING NO.
					60' S200 SUPERTITAN TOWER			000001.620.0299
REV.	REV. BY:	CHK. BY:	DESCRIPTION	DATE				

60FT S300 SUPERTITAN TOWER



C A N A D A	MAXIMUM ALLOWABLE ANTENNA AREA – PER CSA–S37–01								
	ROUND ANTENNA MEMBER / FLAT ANTENNA MEMBER								
	CLASS 1 (10mm ICE)			CLASS 1 (25mm ICE)			CLASS 3 (25mm ICE)		
	350Pa	450Pa	550Pa	350Pa	450Pa	550Pa	350Pa	450Pa	550Pa
	49/35	34/24	20/14	49/35	31/22	20/14	72/48	51/34	39/26

FOUNDATION LOADS:
 MAX. OVERTURNING MOMENT (K*FT) =
 MAX. SHEAR (kips) =
 MAX. AXIAL (kips) =




CUBIC YARDS OF CONCRETE		
PAD CONC VOL.	PIER CONC VOL.	TOTAL VOL.
4.5	2.6	7.1

CONFIDENTIAL: ALL INTELLECTUAL PROPERTY RIGHTS HEREIN ARE THE PROPERTY OF TRYLON MANUFACTURING COMPANY LTD. ALL DUPLICATION, RECORDING, DISCLOSURE OR USE IS PROHIBITED WITHOUT WRITTEN CONSENT OF TRYLON MANUFACTURING COMPANY LTD.

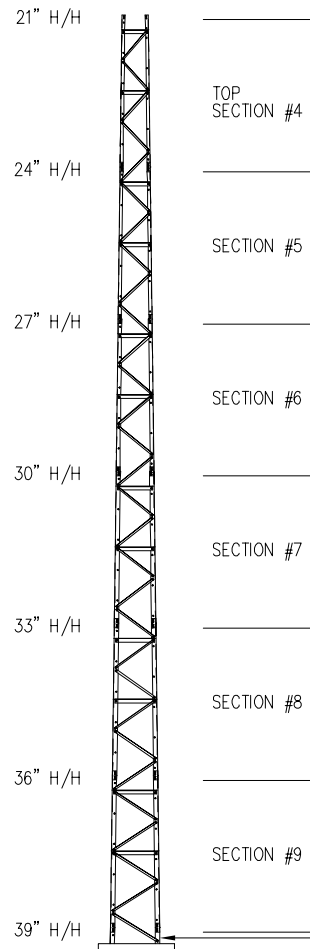


CUSTOMER:		SITE:		SCALE: 100.000	
DATE: 167 FEB 07		BY: MRH		CHK: APP:	
TITLE: 60' S300 SUPERTITAN TOWER				DRAWING NO. 000001.620.0300	

- NOTES: 1) KNOCK-DOWN PART NUMBER 5.94.0300.060.
2) PRE-ASSEMBLED PART NUMBER: 5.95.0300.060.
3) ANTENNA LOADS ARE CENTRALLY LOCATED AND BALANCED, 3-FT OR LESS ABOVE THE TOWER TOP.
4) WIND LOADING ASSUMES (1) 1/2" TRANSMISSION LINE PER 10 SQ.FT. OF ROUND MEMBER ANTENNA AREA.

					 TRYLON TSE
					CUSTOMER: _____ SITE: _____ SCALE: 100.000 DATE: 167 FEB 07 BY: MRH CHK: _____ APP: _____ TITLE: _____ DRAWING NO. 000001.620.0300
REV.	REV. BY:	CHK. BY:	DESCRIPTION	DATE	

60FT S400 SUPERTITAN TOWER



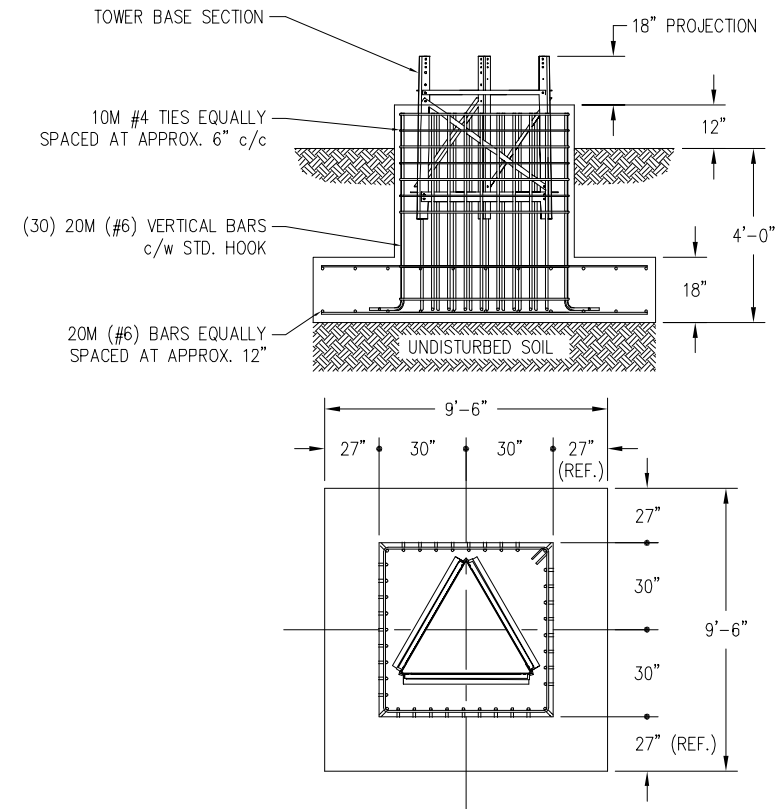
C A N A D A	MAXIMUM ALLOWABLE ANTENNA AREA – PER CSA–S37–01								
	ROUND ANTENNA MEMBER / FLAT ANTENNA MEMBER								
	CLASS 1 (10mm ICE)			CLASS 1 (25mm ICE)			CLASS 3 (25mm ICE)		
	350Pa	450Pa	550Pa	350Pa	450Pa	550Pa	350Pa	450Pa	550Pa
	60/42	38/27	25/17	51/36	38/27	25/17	94/63	65/43	46/31

FOUNDATION LOADS:
MAX. OVERTURNING MOMENT (K*FT) =
MAX. SHEAR (kips) =
MAX. AXIAL (kips) =

– 5' EMBEDMENT SECTION INCLUDED IN KITS

FOUNDATION DESIGN (NORMAL DRY SOIL)

DESIGN ASSUMES THAT FROST DEPTH IS LESS THAN 4'-0"




CUBIC YARDS OF CONCRETE		
PAD CONC VOL.	PIER CONC VOL.	TOTAL VOL.
5.0	3.2	8.2

CONFIDENTIAL: ALL INTELLECTUAL PROPERTY RIGHTS HEREIN ARE THE PROPERTY OF TRYLON MANUFACTURING COMPANY LTD. ALL DUPLICATION, RECORDING, DISCLOSURE OR USE IS PROHIBITED WITHOUT WRITTEN CONSENT OF TRYLON MANUFACTURING COMPANY LTD.

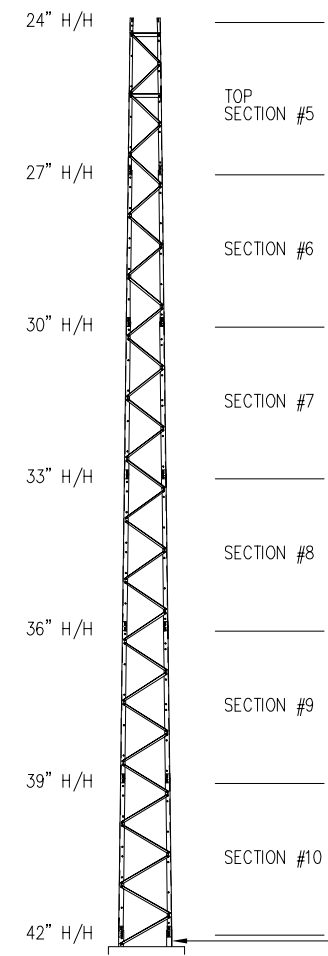


CUSTOMER:		SITE:		SCALE: 100.000	
DATE: 16 FEB 07		BY: MRH		CHK: APP:	
TITLE: 60' S400 SUPERTITAN TOWER				DRAWING NO. 000001.620.0301	

NOTES: 1) KNOCK-DOWN PART NUMBER 5.94.0400.060.
2) PRE-ASSEMBLED PART NUMBER: 5.95.0400.060.
3) ANTENNA LOADS ARE CENTRALLY LOCATED AND BALANCED, 3-FT OR LESS ABOVE THE TOWER TOP.
4) WIND LOADING ASSUMES (1) 1/2" TRANSMISSION LINE PER 10 SQ.FT. OF ROUND MEMBER ANTENNA AREA.

					 TRYLON TSE
					<div>CUSTOMER:</div> <div>SITE:</div> <div>SCALE: 100.000</div>
					<div>DATE: 16 FEB 07</div> <div>BY: MRH</div> <div>CHK:</div> <div>APP:</div>
					<div>TITLE: 60' S400 SUPERTITAN TOWER</div> <div>DRAWING NO. 000001.620.0301</div>
REV.	REV. BY:	CHK. BY:	DESCRIPTION	DATE	

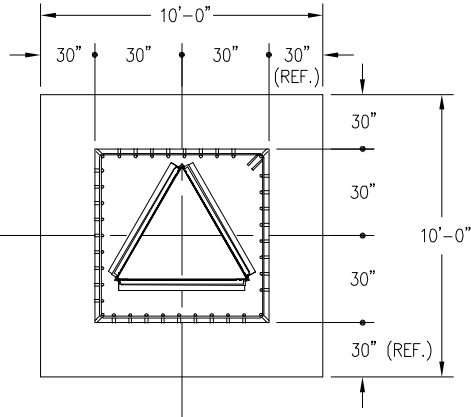
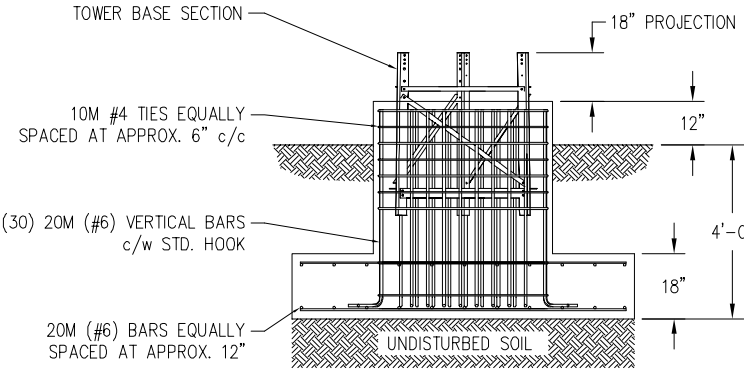
60FT S500 SUPERTITAN TOWER



C A N A D A	MAXIMUM ALLOWABLE ANTENNA AREA - PER CSA-S37-01								
	ROUND ANTENNA MEMBER / FLAT ANTENNA MEMBER								
	CLASS 1 (10mm ICE)			CLASS 1 (25mm ICE)			CLASS 3 (25mm ICE)		
	350Pa	450Pa	550Pa	350Pa	450Pa	550Pa	350Pa	450Pa	550Pa
	66/47	40/28	27/19	60/42	40/28	27/19	101/67	68/45	48/32

FOUNDATION LOADS:
MAX. OVERTURNING MOMENT (K*FT) =
MAX. SHEAR (kips) =
MAX. AXIAL (kips) =

FOUNDATION DESIGN (NORMAL DRY SOIL)
DESIGN ASSUMES THAT FROST DEPTH IS LESS THAN 4'-0"



CUBIC YARDS OF CONCRETE		
PAD CONC VOL.	PIER CONC VOL.	TOTAL VOL.
5.6	3.2	8.8

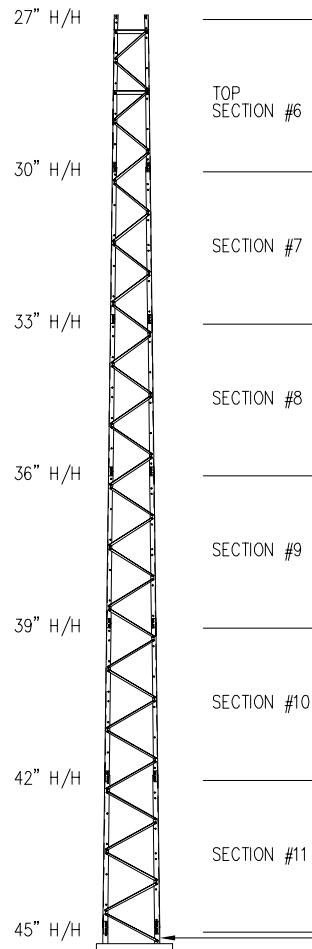
CONFIDENTIAL: ALL INTELLECTUAL PROPERTY RIGHTS HEREIN ARE THE PROPERTY OF TRYLON MANUFACTURING COMPANY LTD. ALL DUPLICATION, RECORDING, DISCLOSURE OR USE IS PROHIBITED WITHOUT WRITTEN CONSENT OF TRYLON MANUFACTURING COMPANY LTD.



- NOTES: 1) KNOCK-DOWN PART NUMBER 5.94.0500.060.
2) PRE-ASSEMBLED PART NUMBER: 5.95.0500.060.
3) ANTENNA LOADS ARE CENTRALLY LOCATED AND BALANCED, 3-FT OR LESS ABOVE THE TOWER TOP.
4) WIND LOADING ASSUMES (1) 1/2" TRANSMISSION LINE PER 10 SQ.FT. OF ROUND MEMBER ANTENNA AREA.

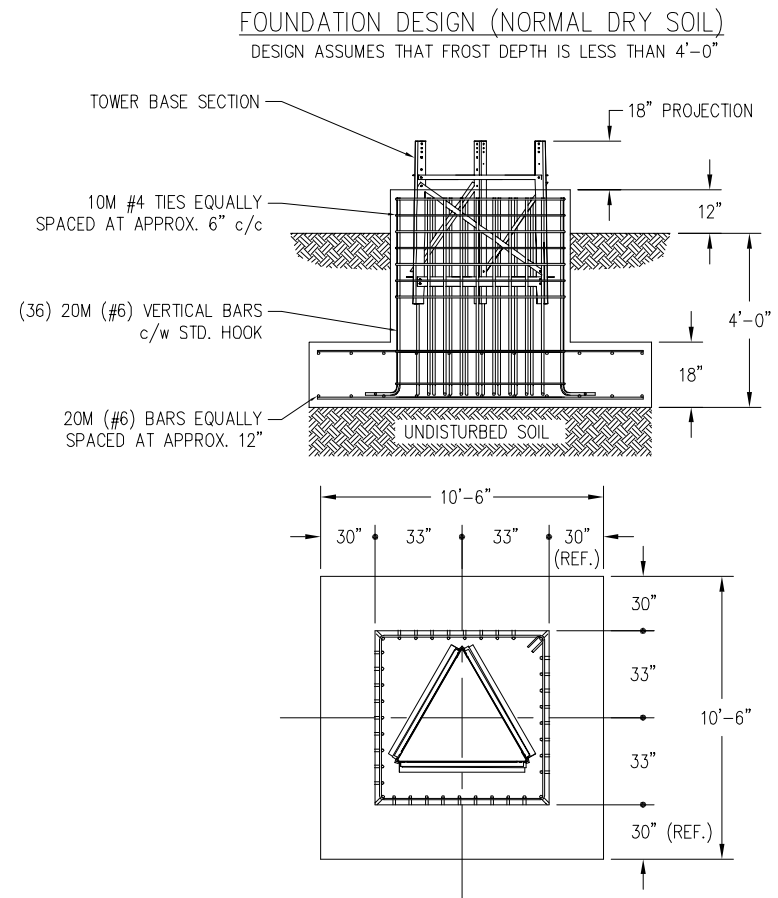
--	--	--	--	--	--	--	--	--	--	--	--	--	--	--	--	--	--	--	--	--	--	--	--	--	--	--	--	--	--	--	--	--	--	--	--	--	--	--	--	--	--	--	--	--	--	--	--	--	--	--	--	--	--	--	--	--	--	--	--	--	--	--	--	--	--	--	--	--	--	--	--	--	--	--	--	--	--	--	--	--	--	--	--	--	--	--	--	--	--	--	--	--	--	--	--	--	--	--	--	--	--	--	--	--	--	--	--	--	--	--	--	--	--	--	--	--	--	--	--	--	--	--	--	--	--	--	--	--	--	--	--	--	--	--	--	--	--	--	--	--	--	--	--	--	--	--	--	--	--	--	--	--	--	--	--	--	--	--	--	--	--	--	--	--	--	--	--	--	--	--	--	--	--	--	--	--	--	--	--	--	--	--	--	--	--	--	--	--	--	--	--	--	--	--	--	--	--	--	--	--	--	--	--	--	--	--	--	--	--	--	--	--	--	--	--	--	--	--	--	--	--	--	--	--	--	--	--	--	--	--	--	--	--	--	--	--	--	--	--	--	--	--	--	--	--	--	--	--	--	--	--	--	--	--	--	--	--	--	--	--	--	--	--	--	--	--	--	--	--	--	--	--	--	--	--	--	--	--	--	--	--	--	--	--	--	--	--	--	--	--	--	--	--	--	--	--	--	--	--	--	--	--	--	--	--	--	--	--	--	--	--	--	--	--	--	--	--	--	--	--	--	--	--	--	--	--	--	--	--	--	--	--	--	--	--	--	--	--	--	--	--	--	--	--	--	--	--	--	--	--	--	--	--	--	--	--	--	--	--	--	--	--	--	--	--	--	--	--	--	--	--	--	--	--	--	--	--	--	--	--	--	--	--	--	--	--	--	--	--	--	--	--	--	--	--	--	--	--	--	--	--	--	--	--	--	--	--	--	--	--	--	--	--	--	--	--	--	--	--	--	--	--	--	--	--	--	--	--	--	--	--	--	--	--	--	--	--	--	--	--	--	--	--	--	--	--	--	--	--	--	--	--	--	--	--	--	--	--	--	--	--	--	--	--	--	--	--	--	--	--	--	--	--	--	--	--	--	--	--	--	--	--	--	--	--	--	--	--	--	--	--	--	--	--	--	--	--	--	--	--	--	--	--	--	--	--	--	--	--	--	--	--	--	--	--	--	--	--	--	--	--	--	--	--	--	--	--	--	--	--	--	--	--	--	--	--	--	--	--	--	--	--	--	--	--	--	--	--	--	--	--	--	--	--	--	--	--	--	--	--	--	--	--	--	--	--	--	--	--	--	--	--	--	--	--	--	--	--	--	--	--	--	--	--	--	--	--	--	--	--	--	--	--	--	--	--	--	--	--	--	--	--	--	--	--	--	--	--	--	--	--	--	--	--	--	--	--	--	--	--	--	--	--	--	--	--	--	--	--	--	--	--	--	--	--	--	--	--	--	--	--	--	--	--	--	--	--	--	--	--	--	--	--	--	--	--	--	--	--	--	--	--	--	--	--	--	--	--	--	--	--	--	--	--	--	--	--	--	--	--	--	--	--	--	--	--	--	--	--	--	--	--	--	--	--	--	--	--	--	--	--	--	--	--	--	--	--	--	--	--	--	--	--	--	--	--	--	--	--	--	--	--	--	--	--	--	--	--	--	--	--	--	--	--	--	--	--	--	--	--	--	--	--	--	--	--	--	--	--	--	--	--	--	--	--	--	--	--	--	--	--	--	--	--	--	--	--	--	--	--	--	--	--	--	--	--	--	--	--	--	--	--	--	--	--	--	--	--	--	--	--	--	--	--	--	--	--	--	--	--	--	--	--	--	--	--	--	--	--	--	--	--	--	--	--	--	--	--	--	--	--	--	--	--	--	--	--	--	--	--	--	--	--	--	--	--	--	--	--	--	--	--	--	--	--	--	--	--	--	--	--	--	--	--	--	--	--	--	--	--	--	--	--	--	--	--	--	--	--	--	--	--	--	--	--	--	--	--	--	--	--	--	--	--	--	--	--	--	--	--	--	--	--	--	--	--	--	--	--	--	--	--	--	--	--	--	--	--	--	--	--	--	--	--	--	--	--	--	--	--	--	--	--	--	--	--	--	--	--	--	--	--	--	--	--	--	--	--	--	--	--	--	--	--	--	--	--	--	--	--	--	--	--	--	--	--	--	--	--	--	--	--	--	--	--	--	--	--	--	--	--	--	--	--	--	--	--	--	--	--	--	--	--	--	--	--	--	--	--	--	--	--	--	--	--	--	--	--	--	--	--	--	--	--	--	--	--	--	--	--	--	--	--	--	--	--	--	--	--	--	--	--	--	--	--	--	--	--	--	--	--	--	--	--	--	--	--	--	--	--	--	--	--	--	--	--	--	--	--	--	--	--	--	--	--	--	--	--	--	--	--	--	--	--	--	--	--	--	--	--	--	--	--	--	--	--	--	--	--	--	--	--	--	--	--	--	--	--	--	--	--	--	--	--	--	--	--	--	--	--	--	--	--	--	--	--	--	--	--	--	--	--	--	--	--	--	--	--	--	--	--	--	--	--	--	--	--	--	--	--	--	--	--	--	--	--	--	--	--	--	--	--	--	--	--	--	--	--	--	--	--	--	--	--	--	--	--	--	--	--	--	--	--	--	--	--	--	--	--	--	--	--	--	--	--	--	--	--	--	--	--	--	--	--	--	--	--	--	--	--	--	--	--	--	--	--	--	--	--	--	--	--	--	--	--	--	--	--	--	--	--	--	--	--	--	--	--	--	--	--	--	--	--	--	--	--	--	--	--	--	--	--	--	--	--	--	--	--	--	--	--	--	--	--	--	--	--	--	--	--	--	--	--	--	--	--	--	--	--	--	--	--	--	--	--	--	--	--	--	--	--	--	--	--	--	--	--	--	--	--	--	--	--	--	--	--	--	--	--	--	--	--	--	--	--	--	--	--	--	--	--	--	--	--	--	--	--	--	--	--	--	--	--	--	--	--	--	--	--	--	--	--	--	--	--	--	--	--	--	--	--	--	--	--	--	--	--	--	--	--	--	--	--	--	--	--	--	--	--	--	--	--	--	--	--	--	--	--	--	--	--	--	--	--

60FT S600 SUPERTITAN TOWER



C A N A D A	MAXIMUM ALLOWABLE ANTENNA AREA – PER CSA–S37–01								
	ROUND ANTENNA MEMBER / FLAT ANTENNA MEMBER								
	CLASS 1 (10mm ICE)			CLASS 1 (25mm ICE)			CLASS 3 (25mm ICE)		
	350Pa	450Pa	550Pa	350Pa	450Pa	550Pa	350Pa	450Pa	550Pa
	76/54	49/35	30/21	67/47	47/33	30/21	116/77	79/53	57/38

FOUNDATION LOADS:
MAX. OVERTURNING MOMENT (K*FT) =
MAX. SHEAR (kips) =
MAX. AXIAL (kips) =



CUBIC YARDS OF CONCRETE		
PAD CONC VOL.	PIER CONC VOL.	TOTAL VOL.
6.1	3.9	10.0

CONFIDENTIAL: ALL INTELLECTUAL PROPERTY RIGHTS HEREIN ARE THE PROPERTY OF TRYLON MANUFACTURING COMPANY LTD. ALL DUPLICATION, RECORDING, DISCLOSURE OR USE IS PROHIBITED WITHOUT WRITTEN CONSENT OF TRYLON MANUFACTURING COMPANY LTD.



CUSTOMER:		SITE:		SCALE: 100.000	
DATE: 16 FEB 07		BY: MRH		CHK: APP:	
TITLE: 60' S600 SUPERTITAN TOWER				DRAWING NO. 000001.620.0303	

NOTES: 1) KNOCK-DOWN PART NUMBER 5.94.0600.060.
2) PRE-ASSEMBLED PART NUMBER: 5.95.0600.060.
3) ANTENNA LOADS ARE CENTRALLY LOCATED AND BALANCED, 3-FT OR LESS ABOVE THE TOWER TOP.
4) WIND LOADING ASSUMES (1) 1/2" TRANSMISSION LINE PER 10 SQ.FT. OF ROUND MEMBER ANTENNA AREA.


					 TRYLON TSE			
					CUSTOMER:	SITE:	SCALE: 100.000	
					DATE: 16 FEB 07	BY: MRH	CHK:	APP:
					TITLE:			DRAWING NO.
					60' S600 SUPERTITAN TOWER			000001.620.0303
REV.	REV. BY:	CHK. BY:	DESCRIPTION	DATE				

Diagram illustrating the vertical structure of a tower, divided into sections with height markers on the left and section labels on the right:

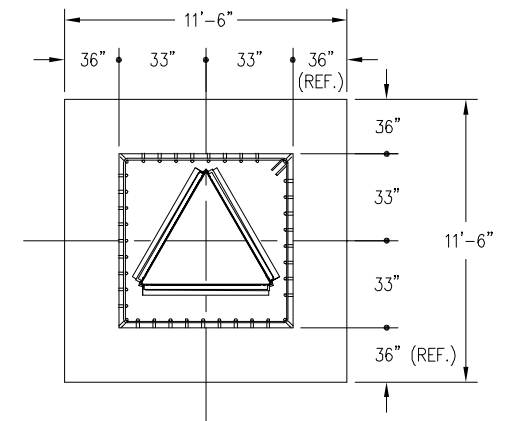
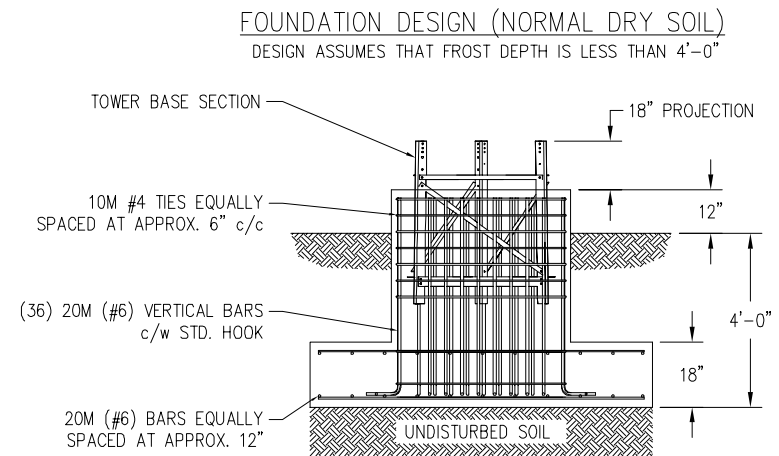
- 2.5' H/H
- 2.75' H/H
- 3' H/H
- 3.25' H/H
- 3.5' H/H
- 3.75' H/H
- 4' H/H

Labels on the right side of the diagram:

- TOP SECTION #7
- SECTION #8
- SECTION #9
- SECTION #10
- SECTION #11
- SECTION #12

C A N A D A	MAXIMUM ALLOWABLE ANTENNA AREA – PER CSA–S37–01								
	ROUND ANTENNA MEMBER / FLAT ANTENNA MEMBER								
	CLASS 1 (10mm ICE)			CLASS 1 (25mm ICE)			CLASS 3 (25mm ICE)		
	350Pa	450Pa	550Pa	350Pa	450Pa	550Pa	350Pa	450Pa	550Pa
	80/57	55/38	35/25	80/57	55/39	35/25	186/124	128/85	90/60

FOUNDATION LOADS:
MAX. OVERTURNING MOMENT (K*FT) =
MAX. SHEAR (kips) =
MAX. AXIAL (kips) =



CUBIC YARDS OF CONCRETE		
PAD CONC VOL.	PIER CONC VOL.	TOTAL VOL.
7.4	3.9	11.3

CONFIDENTIAL: ALL INTELLECTUAL PROPERTY RIGHTS HEREIN ARE THE PROPERTY OF TRYLON MANUFACTURING COMPANY LTD. ALL DUPLICATION, RECORDING, DISCLOSURE OR USE IS PROHIBITED WITHOUT WRITTEN CONSENT OF TRYLON MANUFACTURING COMPANY LTD.



NOTES: 1) KNOCK-DOWN PART NUMBER 5.94.H700.060.
2) PRE-ASSEMBLED PART NUMBER: 5.95.H700.060.
3) ANTENNA LOADS ARE CENTRALLY LOCATED AND BALANCED, 3-FT OR LESS ABOVE THE TOWER TOP.
4) WIND LOADING ASSUMES (1) 1/2" TRANSMISSION LINE PER 10 SQ.FT. OF ROUND MEMBER ANTENNA AREA.


					 TRYLON TSE
					<div>CUSTOMER:</div> <div>SITE:</div> <div>SCALE: 100.000</div>
					<div>DATE: 16 FEB 07</div> <div>BY: MRH</div> <div>CHK:</div> <div>APP:</div>
					<div>TITLE: 60' H700 SUPERTITAN TOWER</div> <div>DRAWING NO. 000001.620.0304</div>
REV.	REV. BY:	CHK. BY:	DESCRIPTION	DATE	

Diagram illustrating the vertical sections of a lattice tower structure, showing heights and section numbers:

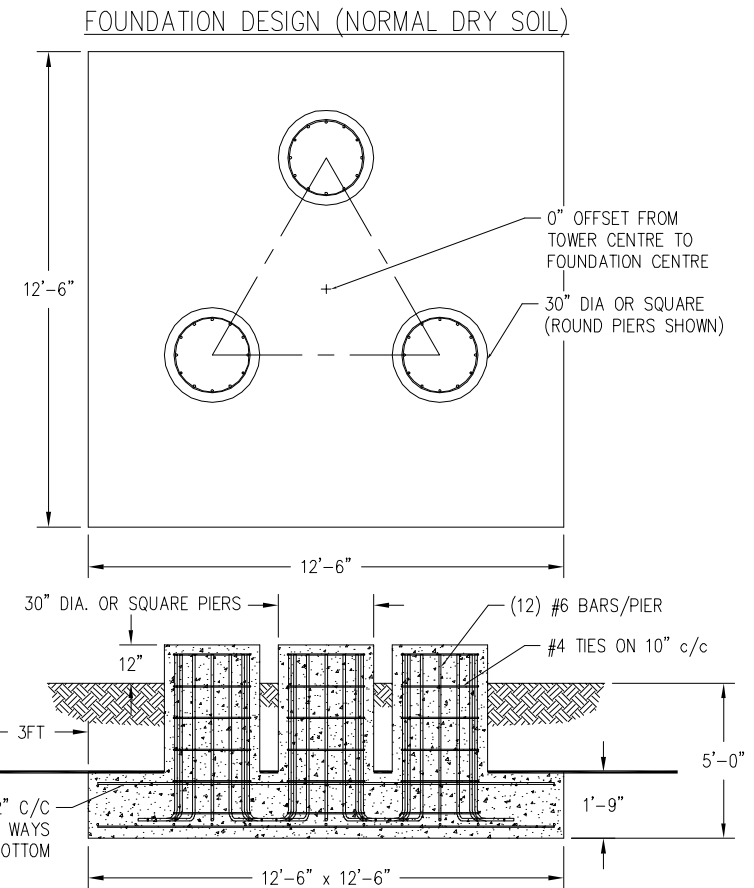
- 3' H/H
- 3.25' H/H
- 3.5' H/H
- 3.75' H/H
- 4' H/H
- 5' H/H
- 6' H/H

Section labels on the right side of the diagram:

- TOP SECTION #9
- SECTION #10
- SECTION #11HD
- SECTION #12HD
- SECTION #13
- SECTION #14

C A N A D A	MAXIMUM ALLOWABLE ANTENNA AREA – PER CSA–S37–01								
	ROUND ANTENNA MEMBER / FLAT ANTENNA MEMBER								
	CLASS 1 (10mm ICE)			CLASS 1 (25mm ICE)			CLASS 3 (25mm ICE)		
	350Pa	450Pa	550Pa	350Pa	450Pa	550Pa	350Pa	450Pa	550Pa
	85/60	61/43	47/33	85/60	61/43	47/33	197/128	140/93	104/69

FOUNDATION LOADS:
 MAX. OVERTURNING MOMENT (K*FT) =
 MAX. SHEAR (kips) =
 MAX. AXIAL (kips) =



CUBIC YARDS of CONCRETE				
PAD	RND PIER	SQ PIER	TOTAL RND	TOTAL SQ
10.13	0.77	0.98	12.45	13.08

CONFIDENTIAL: ALL INTELLECTUAL PROPERTY RIGHTS HEREIN ARE THE PROPERTY OF TRYLON MANUFACTURING COMPANY LTD. ALL DUPLICATION, RECORDING, DISCLOSURE OR USE IS PROHIBITED WITHOUT WRITTEN CONSENT OF TRYLON MANUFACTURING COMPANY LTD.



CUSTOMER:		SITE:		SCALE: 100.000	
DATE: 16 FEB 07		BY: MRH		CHK: APP:	
TITLE: 60' S900 SUPERTITAN TOWER				DRAWING NO. 000001.620.0305	

- NOTES: 1) KNOCK-DOWN PART NUMBER 5.94.S900.060.
2) PRE-ASSEMBLED PART NUMBER: NOT AVAILABLE.
3) ANTENNA LOADS ARE CENTRALLY LOCATED AND BALANCED, 3-FT OR LESS ABOVE THE TOWER TOP.
4) WIND LOADING ASSUMES (1) 1/2" TRANSMISSION LINE PER 10 SQ.FT. OF ROUND MEMBER ANTENNA AREA.


					<div> TRYLON Tsf</div>			
					CUSTOMER:	SITE:	SCALE:	100.000
					DATE:	BY:	CHK:	APP:
					16 FEB 07	MRH		
					TITLE:	DRAWING NO.		
					60' S900 SUPERTITAN TOWER			000001.620.0305
REV.	REV. BY:	CHK. BY:	DESCRIPTION	DATE				

Diagram illustrating the height segments and sections of a lattice tower structure:

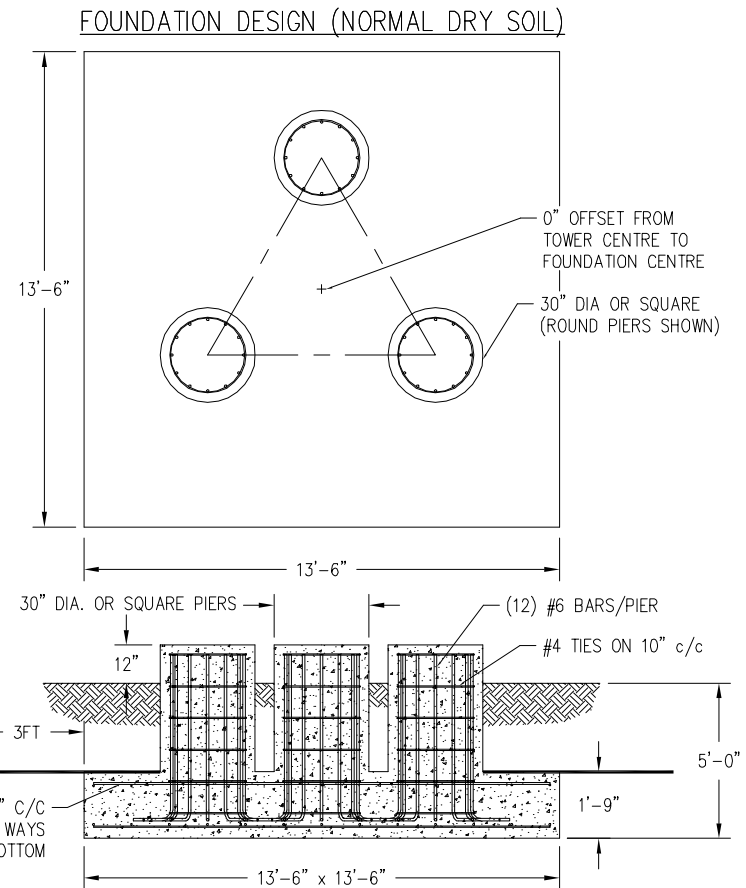
- 3.25' H/H
- 3.5' H/H
- 3.75' H/H
- 4' H/H
- 5' H/H
- 6' H/H
- 7' H/H

Labels for sections and top:

- TOP SECTION #10
- SECTION #11H
- SECTION #12H
- SECTION #13
- SECTION #14
- SECTION #15

C A N A D A	MAXIMUM ALLOWABLE ANTENNA AREA – PER CSA–S37–01								
	ROUND ANTENNA MEMBER / FLAT ANTENNA MEMBER								
	CLASS 1 (10mm ICE)			CLASS 1 (25mm ICE)			CLASS 3 (25mm ICE)		
	350Pa	450Pa	550Pa	350Pa	450Pa	550Pa	350Pa	450Pa	550Pa
	93/66	71/50	55/39	93/66	71/50	55/39	198/132	151/101	118/79

FOUNDATION LOADS:
MAX. OVERTURNING MOMENT (K*FT) =
MAX. SHEAR (kips) =
MAX. AXIAL (kips) =




CUBIC YARDS of CONCRETE				
PAD	RND PIER	SQ PIER	TOTAL RND	TOTAL SQ
11.81	0.77	0.98	14.13	14.76

CONFIDENTIAL: ALL INTELLECTUAL PROPERTY RIGHTS HEREIN ARE THE PROPERTY OF TRYLON MANUFACTURING COMPANY LTD. ALL DUPLICATION, RECORDING, DISCLOSURE OR USE IS PROHIBITED WITHOUT WRITTEN CONSENT OF TRYLON MANUFACTURING COMPANY LTD.

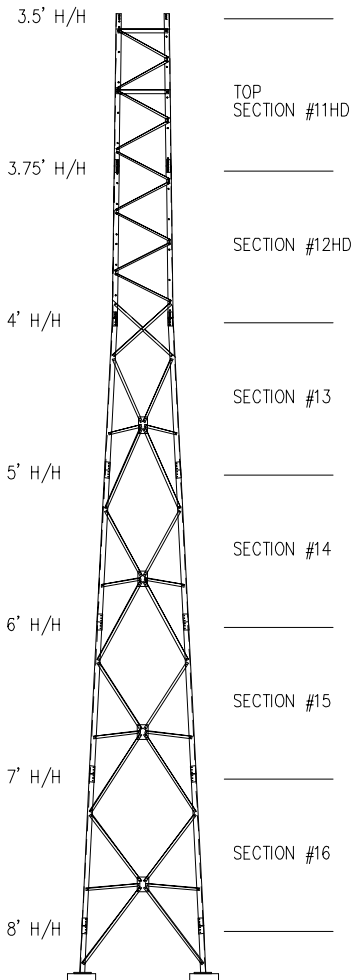


CUSTOMER:		SITE:		SCALE: 100.000	
DATE: 16 FEB 07		BY: MRH		CHK: APP:	
TITLE: 60' S1000 SUPERTITAN TOWER				DRAWING NO. 000001.620.0306	

- NOTES: 1) KNOCK-DOWN PART NUMBER 5.94.S1000.060.
2) PRE-ASSEMBLED PART NUMBER: NOT AVAILABLE.
3) ANTENNA LOADS ARE CENTRALLY LOCATED AND BALANCED, 3-FT OR LESS ABOVE THE TOWER TOP.
4) WIND LOADING ASSUMES (1) 1/2" TRANSMISSION LINE PER 10 SQ.FT. OF ROUND MEMBER ANTENNA AREA.

					<div> TRYLON TSF</div>			
					CUSTOMER:	SITE:	SCALE:	100,000
					DATE:	BY:	CHK:	APP:
					16 FEB 07	MRH		
					TITLE:			DRAWING NO.
					60' S1000 SUPERTITAN TOWER			000001.620.0306
REV.	REV. BY.	CHK. BY.	DESCRIPTION	DATE				

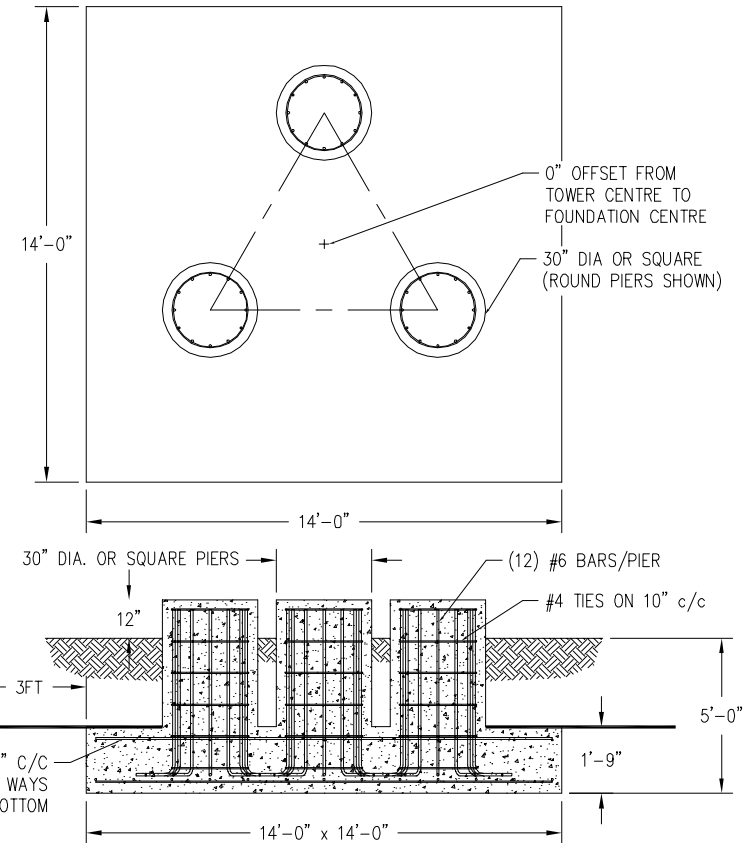
60FT S1100 SUPERTITAN TOWER



C A N N A D A	MAXIMUM ALLOWABLE ANTENNA AREA - PER CSA-S37-01								
	ROUND ANTENNA MEMBER / FLAT ANTENNA MEMBER								
	CLASS 1 (10mm ICE)			CLASS 1 (25mm ICE)			CLASS 3 (25mm ICE)		
	350Pa	450Pa	550Pa	350Pa	450Pa	550Pa	350Pa	450Pa	550Pa
	171/122	125/89	95/67	171/122	125/89	95/67	430/287	322/215	252/168

FOUNDATION LOADS:
MAX. OVERTURNING MOMENT (K*FT) =
MAX. SHEAR (kips) =
MAX. AXIAL (kips) =

FOUNDATION DESIGN (NORMAL DRY SOIL)



CUBIC YARDS of CONCRETE				
PAD	RND PIER	SQ PIER	TOTAL RND	TOTAL SQ
12.70	0.77	0.98	15.02	15.66

- NOTES: 1) KNOCK-DOWN PART NUMBER 5.94.S1100.060.
2) PRE-ASSEMBLED PART NUMBER: NOT AVAILABLE.
3) ANTENNA LOADS ARE CENTRALLY LOCATED AND BALANCED, 3-FT OR LESS ABOVE THE TOWER TOP.
4) WIND LOADING ASSUMES (1) 1/2" TRANSMISSION LINE PER 10 SQ.FT. OF ROUND MEMBER ANTENNA AREA.

REV.	REV. BY:	CHK. BY:	DESCRIPTION	DATE

CONFIDENTIAL: ALL INTELLECTUAL PROPERTY RIGHTS HEREIN ARE THE PROPERTY OF TRYLON MANUFACTURING COMPANY LTD. ALL DUPLICATION, RECORDING, DISCLOSURE OR USE IS PROHIBITED WITHOUT WRITTEN CONSENT OF TRYLON MANUFACTURING COMPANY LTD.



CUSTOMER:		SITE:		SCALE: 100,000	
DATE: 167 FEB 07	BY: MRH	CHK:	APP:		
TITLE: 60' S1100 SUPERTITAN TOWER				DRAWING NO. 000001.620.0307	