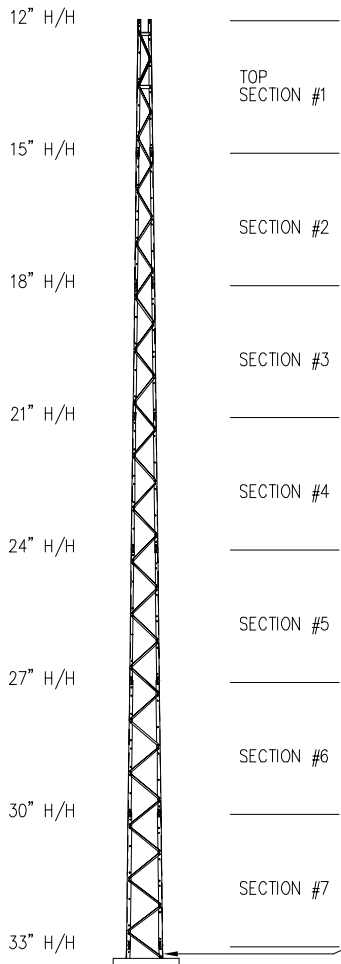


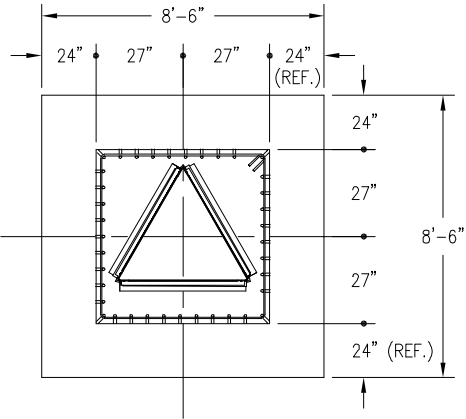
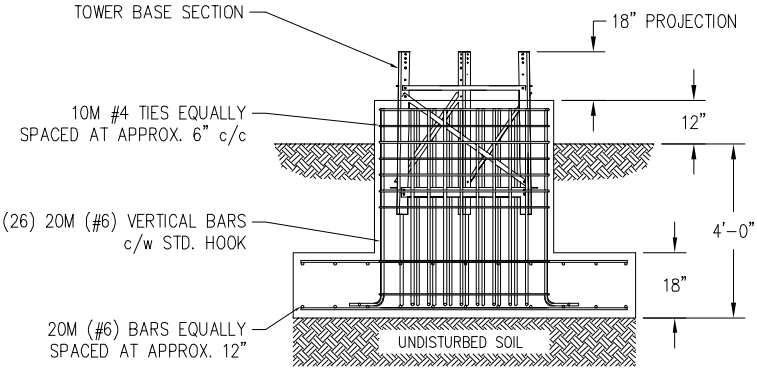
70FT S100 SUPERTITAN TOWER



C A N A D A	MAXIMUM ALLOWABLE ANTENNA AREA – PER CSA-S37-1								
	ROUND ANTENNA MEMBER / FLAT ANTENNA MEMBER								
	CLASS 1 (10mm ICE)			CLASS 1 (25mm ICE)			CLASS 3 (25mm ICE)		
	350Pa	450Pa	550Pa	350Pa	450Pa	550Pa	350Pa	450Pa	550Pa
	10/7	1/-	-/-	10/7	1/-	-/-	23/15	12/8	5/3

FOUNDATION LOADS:  
MAX. OVERTURNING MOMENT (K\*FT) =  
MAX. SHEAR (kips) =  
MAX. AXIAL (kips) =

FOUNDATION DESIGN (NORMAL DRY SOIL)  
DESIGN ASSUMES THAT FROST DEPTH IS LESS THAN 4'-0"



CUBIC YARDS OF CONCRETE		
PAD CONC VOL.	PIER CONC VOL.	TOTAL VOL.
4.0	2.6	6.6

NOTES: 1) KNOCK-DOWN PART NUMBER 5.94.S100.070.  
2) PRE-ASSEMBLED PART NUMBER: 5.95.S100.070.  
3) ANTENNA LOADS ARE CENTRALLY LOCATED AND BALANCED, 3-FT OR LESS ABOVE THE TOWER TOP.  
4) WIND LOADING ASSUMES (1) 1/2" TRANSMISSION LINE PER 10 SQ.FT. OF ROUND MEMBER ANTENNA AREA.

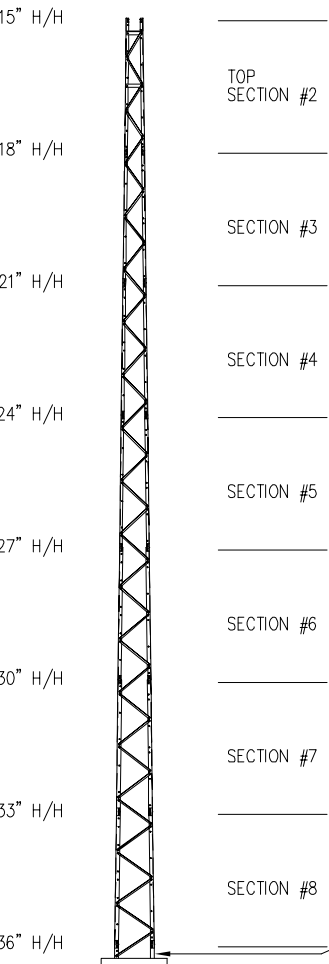
REV.	REV. BY:	CHK. BY:	DESCRIPTION	DATE

CONFIDENTIAL: ALL INTELLECTUAL PROPERTY RIGHTS HEREIN ARE THE PROPERTY OF TRYLON MANUFACTURING COMPANY LTD. ALL DUPLICATION, RECORDING, DISCLOSURE OR USE IS PROHIBITED WITHOUT WRITTEN CONSENT OF TRYLON MANUFACTURING COMPANY LTD.

**TRYLON Tsf**

CUSTOMER:	SITE:	SCALE: 115.000
DATE: 16 FEB 07	BY: EP	CHK: APP:
TITLE: 70' S100 SUPERTITAN TOWER		DRAWING NO. 000001.620.0308

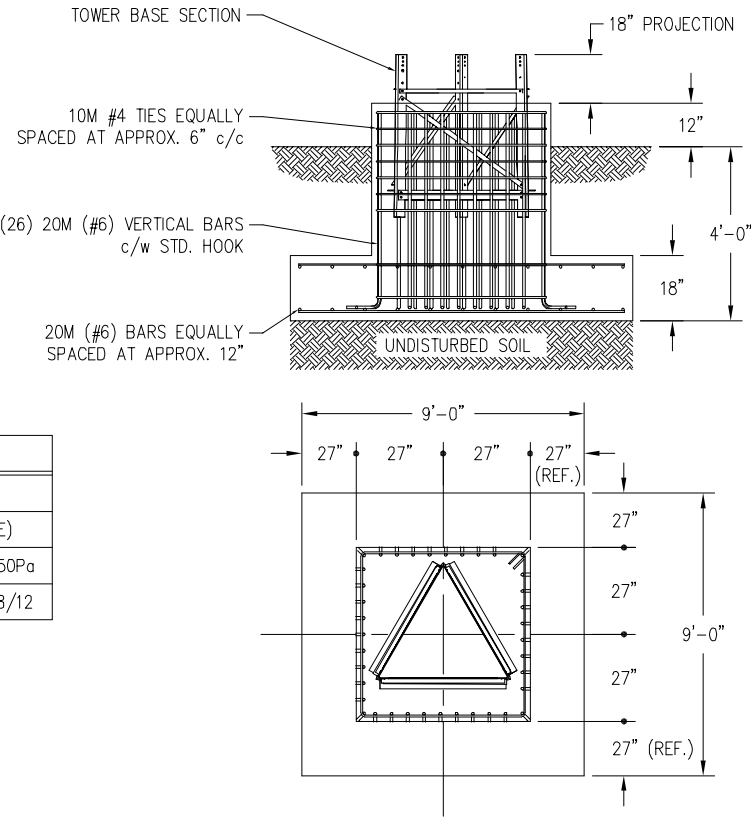
70FT S200 SUPERTITAN TOWER



C A N A D A	MAXIMUM ALLOWABLE ANTENNA AREA – PER CSA-S37-1								
	ROUND ANTENNA MEMBER / FLAT ANTENNA MEMBER								
	CLASS 1 (10mm ICE)			CLASS 1 (25mm ICE)			CLASS 3 (25mm ICE)		
	350Pa	450Pa	550Pa	350Pa	450Pa	550Pa	350Pa	450Pa	550Pa
	25/17	15/10	8/5	25/17	15/10	7/5	41/27	26/17	18/12

FOUNDATION LOADS:  
MAX. OVERTURNING MOMENT (K\*FT) =  
MAX. SHEAR (kips) =  
MAX. AXIAL (kips) =

FOUNDATION DESIGN (NORMAL DRY SOIL)  
DESIGN ASSUMES THAT FROST DEPTH IS LESS THAN 4'-0"




CUBIC YARDS OF CONCRETE		
PAD CONC VOL.	PIER CONC VOL.	TOTAL VOL.
4.5	2.6	7.1

- NOTES: 1) KNOCK-DOWN PART NUMBER 5.94.S200.070.  
2) PRE-ASSEMBLED PART NUMBER: 5.95.S200.070.  
3) ANTENNA LOADS ARE CENTRALLY LOCATED AND BALANCED, 3-FT OR LESS ABOVE THE TOWER TOP.  
4) WIND LOADING ASSUMES (1) 1/2" TRANSMISSION LINE PER 10 SQ.FT. OF ROUND MEMBER ANTENNA AREA.

REV.	REV. BY:	CHK. BY:	DESCRIPTION	DATE

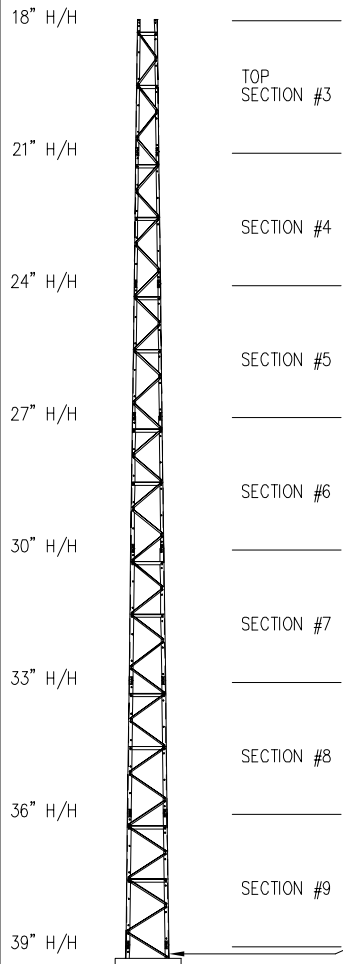
CONFIDENTIAL: ALL INTELLECTUAL PROPERTY RIGHTS HEREIN ARE THE PROPERTY OF TRYLON MANUFACTURING COMPANY LTD. ALL DUPLICATION, RECORDING, DISCLOSURE OR USE IS PROHIBITED WITHOUT WRITTEN CONSENT OF TRYLON MANUFACTURING COMPANY LTD.



**TRYLON Tsf**

CUSTOMER:	SITE:	SCALE: 115,000
DATE: 16 FEB 07	BY: EP	CHK: APP:
TITLE: 70' S200 SUPERTITAN TOWER		DRAWING NO. 000001.620.0309

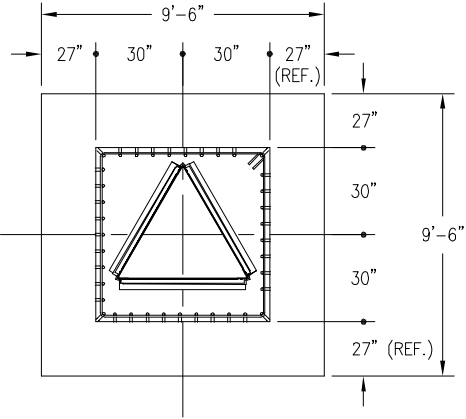
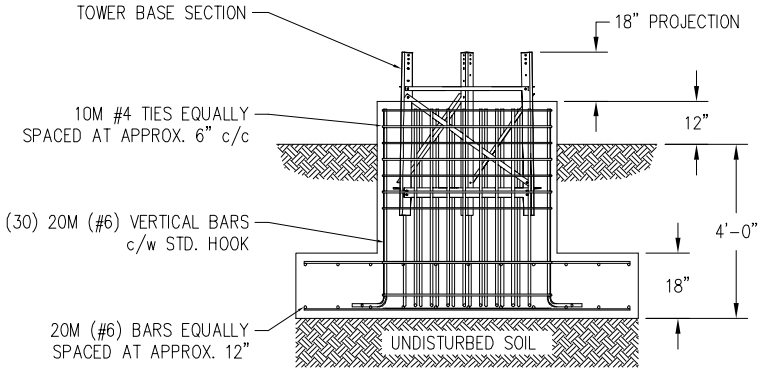
70FT S300 SUPERTITAN TOWER



C A N A D A	MAXIMUM ALLOWABLE ANTENNA AREA - PER CSA-S37-1								
	ROUND ANTENNA MEMBER / FLAT ANTENNA MEMBER								
	CLASS 1 (10mm ICE)			CLASS 1 (25mm ICE)			CLASS 3 (25mm ICE)		
	350Pa	450Pa	550Pa	350Pa	450Pa	550Pa	350Pa	450Pa	550Pa
	39/27	20/14	10/7	33/23	20/14	10/7	68/45	42/28	26/17

FOUNDATION LOADS:  
MAX. OVERTURNING MOMENT (K\*FT) =  
MAX. SHEAR (kips) =  
MAX. AXIAL (kips) =

FOUNDATION DESIGN (NORMAL DRY SOIL)  
DESIGN ASSUMES THAT FROST DEPTH IS LESS THAN 4'-0"



CUBIC YARDS OF CONCRETE		
PAD CONC VOL.	PIER CONC VOL.	TOTAL VOL.
5.0	3.2	8.2

NOTES: 1) KNOCK-DOWN PART NUMBER 5.94.S300.070.  
2) PRE-ASSEMBLED PART NUMBER: 5.95.S300.070.  
3) ANTENNA LOADS ARE CENTRALLY LOCATED AND BALANCED, 3-FT OR LESS ABOVE THE TOWER TOP.  
4) WIND LOADING ASSUMES (1) 1/2" TRANSMISSION LINE PER 10 SQ.FT. OF ROUND MEMBER ANTENNA AREA.

REV.	REV. BY:	CHK. BY:	DESCRIPTION	DATE

CONFIDENTIAL: ALL INTELLECTUAL PROPERTY RIGHTS HEREIN ARE THE PROPERTY OF TRYLON MANUFACTURING COMPANY LTD. ALL DUPLICATION, RECORDING, DISCLOSURE OR USE IS PROHIBITED WITHOUT WRITTEN CONSENT OF TRYLON MANUFACTURING COMPANY LTD.

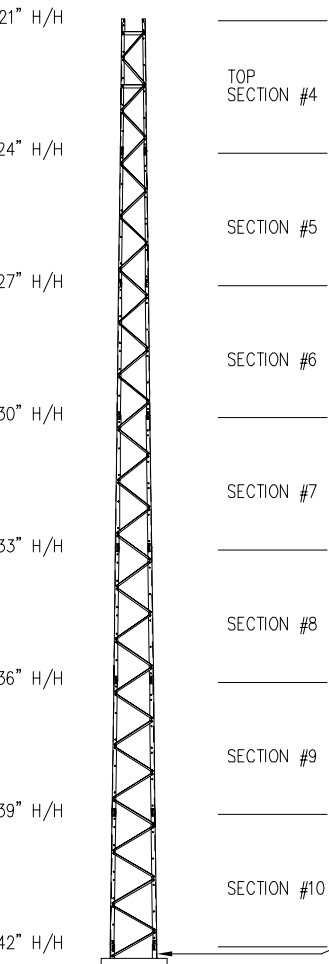
**TRYLON TSF**

CUSTOMER: SITE: SCALE: 115,000

DATE: 16 FEB 07 BY: EP CHK: APP:

TITLE: 70' S300 SUPERTITAN TOWER DRAWING NO. 000001.620.0310

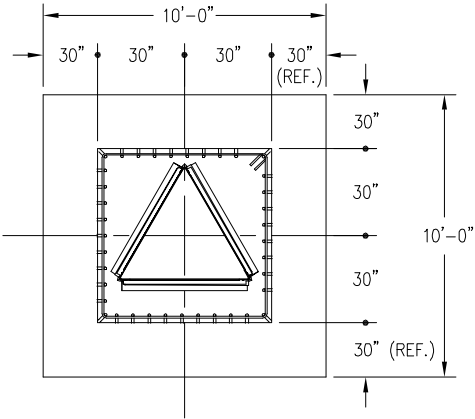
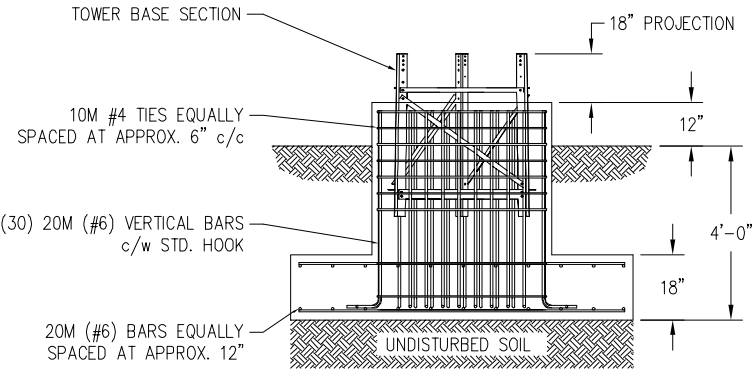
70FT S400 SUPERTITAN TOWER



C A N N A D A	MAXIMUM ALLOWABLE ANTENNA AREA - PER CSA-S37-1								
	ROUND ANTENNA MEMBER / FLAT ANTENNA MEMBER								
	CLASS 1 (10mm ICE)			CLASS 1 (25mm ICE)			CLASS 3 (25mm ICE)		
	350Pa	450Pa	550Pa	350Pa	450Pa	550Pa	350Pa	450Pa	550Pa
	40/28	22/15	10/7	40/28	22/15	10/7	72/48	45/30	28/19

FOUNDATION LOADS:  
MAX. OVERTURNING MOMENT (K\*FT) =  
MAX. SHEAR (kips) =  
MAX. AXIAL (kips) =

FOUNDATION DESIGN (NORMAL DRY SOIL)  
DESIGN ASSUMES THAT FROST DEPTH IS LESS THAN 4'-0"



CUBIC YARDS OF CONCRETE		
PAD CONC VOL.	PIER CONC VOL.	TOTAL VOL.
5.6	3.2	8.8

- NOTES: 1) KNOCK-DOWN PART NUMBER 5.94.S400.070.  
2) PRE-ASSEMBLED PART NUMBER: 5.95.S400.070.  
3) ANTENNA LOADS ARE CENTRALLY LOCATED AND BALANCED, 3-FT OR LESS ABOVE THE TOWER TOP.  
4) WIND LOADING ASSUMES (1) 1/2" TRANSMISSION LINE PER 10 SQ.FT. OF ROUND MEMBER ANTENNA AREA.

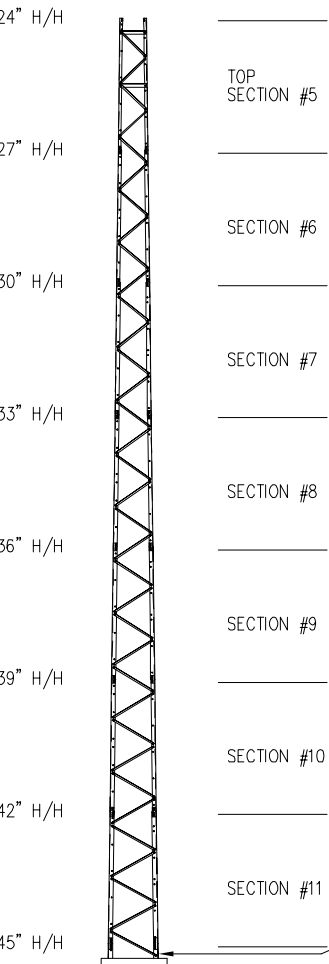
REV.	REV. BY:	CHK. BY:	DESCRIPTION	DATE

CONFIDENTIAL: ALL INTELLECTUAL PROPERTY RIGHTS HEREIN ARE THE PROPERTY OF TRYLON MANUFACTURING COMPANY LTD. ALL DUPLICATION, RECORDING, DISCLOSURE OR USE IS PROHIBITED WITHOUT WRITTEN CONSENT OF TRYLON MANUFACTURING COMPANY LTD.



CUSTOMER:		SITE:		SCALE: 115,000	
DATE: 16 FEB 07	BY: EP	CHK:	APP:		
TITLE: 70' S400 SUPERTITAN TOWER				DRAWING NO. 000001.620.0311	

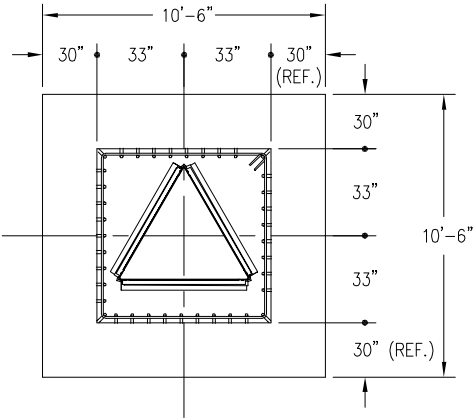
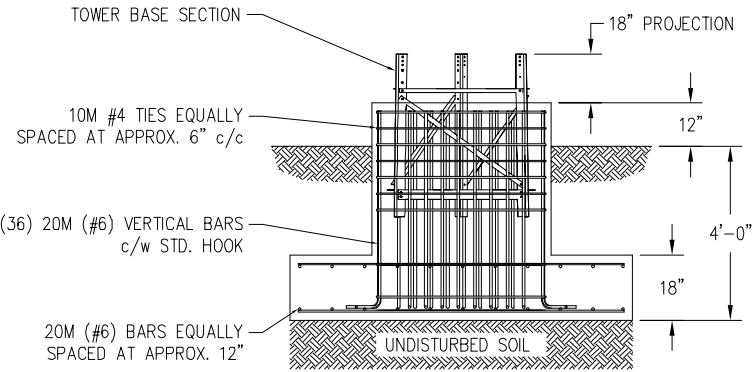
70FT S500 SUPERTITAN TOWER



C A N A D A	MAXIMUM ALLOWABLE ANTENNA AREA – PER CSA-S37-1								
	ROUND ANTENNA MEMBER / FLAT ANTENNA MEMBER								
	CLASS 1 (10mm ICE)			CLASS 1 (25mm ICE)			CLASS 3 (25mm ICE)		
	350Pa	450Pa	550Pa	350Pa	450Pa	550Pa	350Pa	450Pa	550Pa
	49/35	28/20	12/8	49/35	28/20	12/8	82/55	53/35	34/23

FOUNDATION LOADS:  
MAX. OVERTURNING MOMENT (K\*FT) =  
MAX. SHEAR (kips) =  
MAX. AXIAL (kips) =

FOUNDATION DESIGN (NORMAL DRY SOIL)  
DESIGN ASSUMES THAT FROST DEPTH IS LESS THAN 4'-0"



CUBIC YARDS OF CONCRETE		
PAD CONC VOL.	PIER CONC VOL.	TOTAL VOL.
6.1	3.9	10.0

- NOTES: 1) KNOCK-DOWN PART NUMBER 5.94.S500.070.  
2) PRE-ASSEMBLED PART NUMBER: 5.95.S500.070.  
3) ANTENNA LOADS ARE CENTRALLY LOCATED AND BALANCED, 3-FT OR LESS ABOVE THE TOWER TOP.  
4) WIND LOADING ASSUMES (1) 1/2" TRANSMISSION LINE PER 10 SQ.FT. OF ROUND MEMBER ANTENNA AREA.

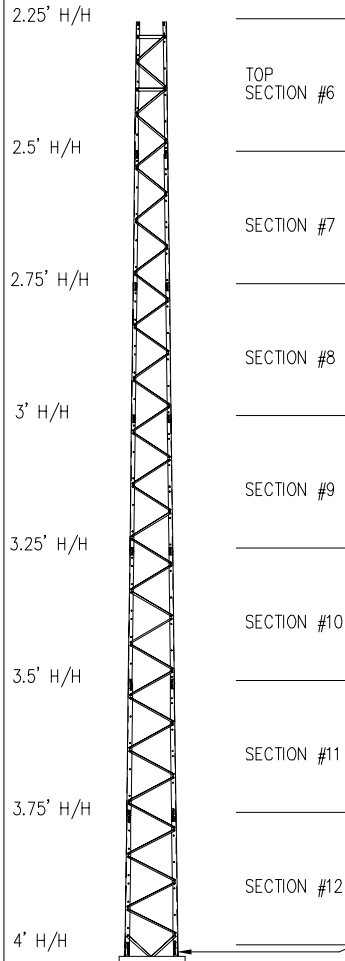
REV.	REV. BY:	CHK. BY:	DESCRIPTION	DATE

CONFIDENTIAL: ALL INTELLECTUAL PROPERTY RIGHTS HEREIN ARE THE PROPERTY OF TRYLON MANUFACTURING COMPANY LTD. ALL DUPLICATION, RECORDING, DISCLOSURE OR USE IS PROHIBITED WITHOUT WRITTEN CONSENT OF TRYLON MANUFACTURING COMPANY LTD.



CUSTOMER:		SITE:		SCALE: 115.000	
DATE: 16 FEB 07	BY: EP	CHK:	APP:		
TITLE: 70' S500 SUPERTITAN TOWER				DRAWING NO. 000001.620.0312	

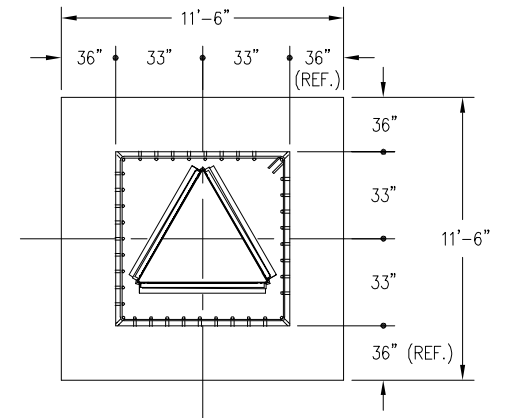
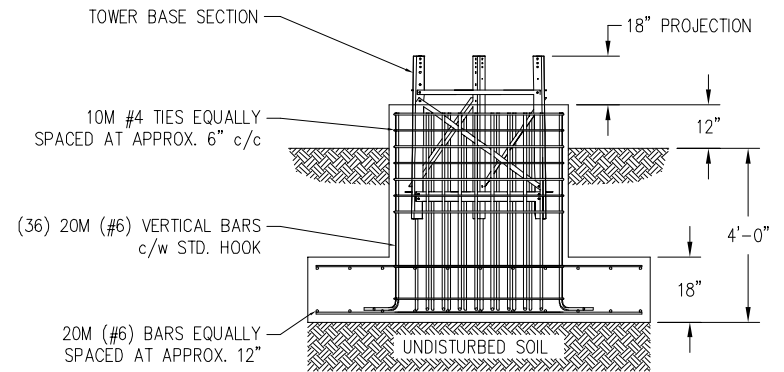
# 70FT S600 SUPERTITAN TOWER



C A N A D A	MAXIMUM ALLOWABLE ANTENNA AREA - PER CSA-S37-1								
	ROUND ANTENNA MEMBER / FLAT ANTENNA MEMBER								
	CLASS 1 (10mm ICE)			CLASS 1 (25mm ICE)			CLASS 3 (25mm ICE)		
	350Pa	450Pa	550Pa	350Pa	450Pa	550Pa	350Pa	450Pa	550Pa
	50/35	29/20	12/8	49/35	29/20	12/8	88/59	56/37	36/24

FOUNDATION LOADS:  
 MAX. OVERTURNING MOMENT (K\*FT) =  
 MAX. SHEAR (kips) =  
 MAX. AXIAL (kips) =

## FOUNDATION DESIGN (NORMAL DRY SOIL) DESIGN ASSUMES THAT FROST DEPTH IS LESS THAN 4'-0"



CUBIC YARDS OF CONCRETE		
PAD CONC VOL.	PIER CONC VOL.	TOTAL VOL.
7.4	3.9	11.3

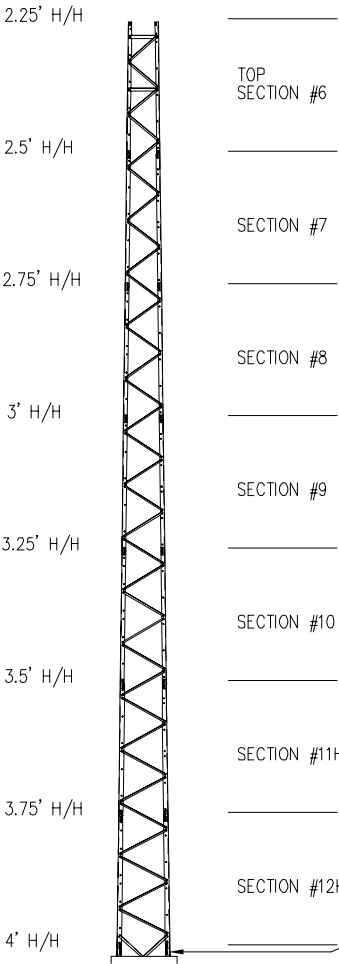
- NOTES:
- 1) KNOCK-DOWN PART NUMBER 5.94.S600.070.
  - 2) PRE-ASSEMBLED PART NUMBER: 5.95.S600.070.
  - 3) ANTENNA LOADS ARE CENTRALLY LOCATED AND BALANCED, 3-FT OR LESS ABOVE THE TOWER TOP.
  - 4) WIND LOADING ASSUMES (1) 1/2" TRANSMISSION LINE PER 10 SQ.FT. OF ROUND MEMBER ANTENNA AREA.

REV.	REV. BY:	CHK. BY:	DESCRIPTION	DATE

CONFIDENTIAL: ALL INTELLECTUAL PROPERTY RIGHTS HEREIN ARE THE PROPERTY OF TRYLON MANUFACTURING COMPANY LTD. ALL DUPLICATION, RECORDING, DISCLOSURE OR USE IS PROHIBITED WITHOUT WRITTEN CONSENT OF TRYLON MANUFACTURING COMPANY LTD.

CUSTOMER:	SITE:	SCALE: 115,000
DATE: 16 FEB 07	BY: EP	CHK: APP:
TITLE: 70' S600 SUPERTITAN TOWER	DRAWING NO. 000001.620.0313	

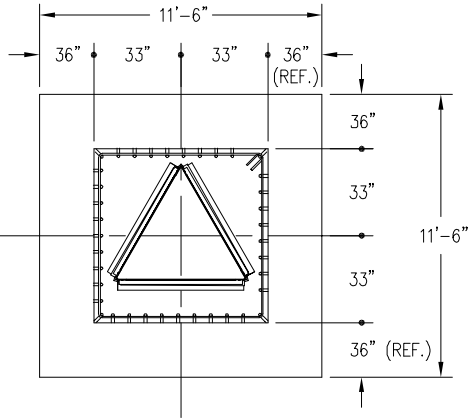
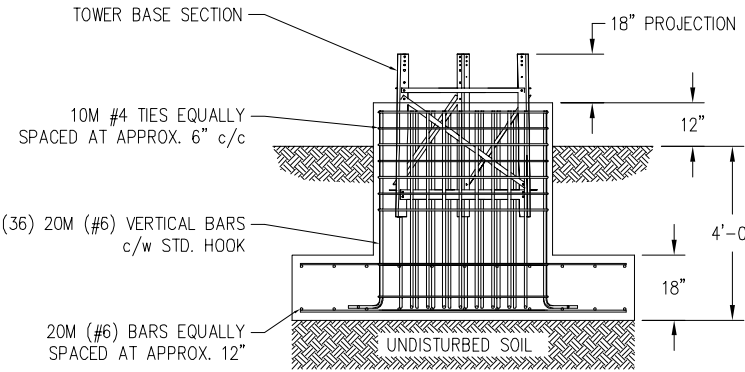
70FT H600 SUPERTITAN TOWER



C A N A D A	MAXIMUM ALLOWABLE ANTENNA AREA - PER CSA-S37-1								
	ROUND ANTENNA MEMBER / FLAT ANTENNA MEMBER								
	CLASS 1 (10mm ICE)			CLASS 1 (25mm ICE)			CLASS 3 (25mm ICE)		
	350Pa	450Pa	550Pa	350Pa	450Pa	550Pa	350Pa	450Pa	550Pa
	80/57	50/35	30/21	75/53	50/35	30/21	132/88	92/61	69/46

FOUNDATION LOADS:  
MAX. OVERTURNING MOMENT (K\*FT) =  
MAX. SHEAR (kips) =  
MAX. AXIAL (kips) =

FOUNDATION DESIGN (NORMAL DRY SOIL)  
DESIGN ASSUMES THAT FROST DEPTH IS LESS THAN 4'-0"



CUBIC YARDS OF CONCRETE		
PAD CONC VOL.	PIER CONC VOL.	TOTAL VOL.
7.4	3.9	11.3

- NOTES: 1) KNOCK-DOWN PART NUMBER 5.94.H600.070.  
2) PRE-ASSEMBLED PART NUMBER: 5.95.H600.070.  
3) ANTENNA LOADS ARE CENTRALLY LOCATED AND BALANCED, 3-FT OR LESS ABOVE THE TOWER TOP.  
4) WIND LOADING ASSUMES (1) 1/2" TRANSMISSION LINE PER 10 SQ.FT. OF ROUND MEMBER ANTENNA AREA.

REV.	REV. BY:	CHK. BY:	DESCRIPTION	DATE

CONFIDENTIAL: ALL INTELLECTUAL PROPERTY RIGHTS HEREIN ARE THE PROPERTY OF TRYLON MANUFACTURING COMPANY LTD. ALL DUPLICATION, RECORDING, DISCLOSURE OR USE IS PROHIBITED WITHOUT WRITTEN CONSENT OF TRYLON MANUFACTURING COMPANY LTD.

**TRYLON TSE**

CUSTOMER: SITE: SCALE: 115,000

DATE: 16 FEB 07 BY: EP CHK: APP:

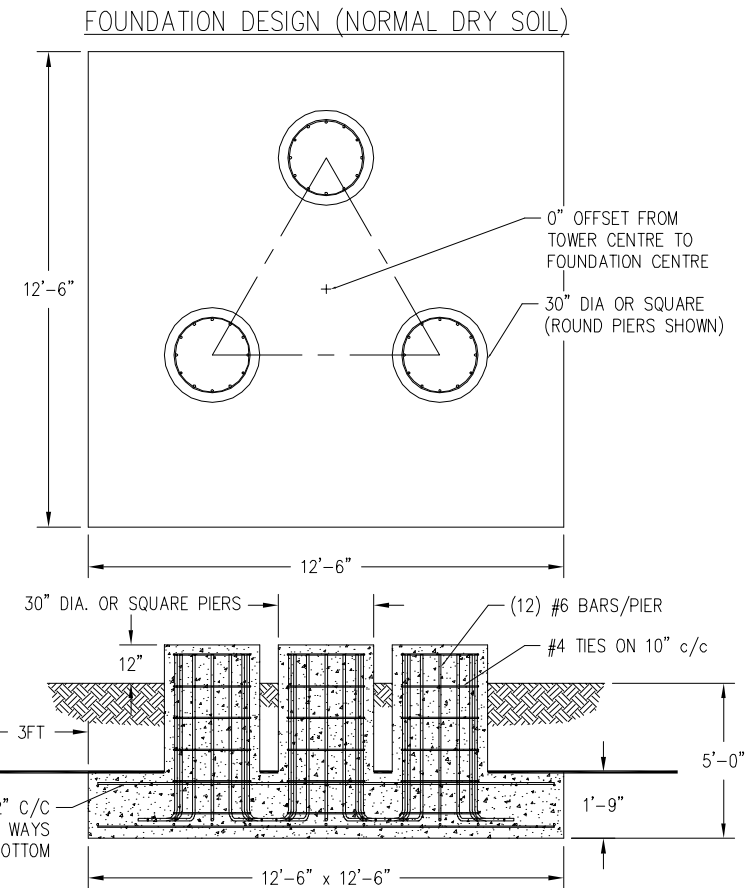
TITLE: 70' H600 SUPERTITAN TOWER DRAWING NO. 000001.620.0314

Diagram illustrating the height markers and section divisions for a 14-section tower structure. The height markers are listed on the left, and the section labels are on the right.

Height Marker	Section Label
2.75' H/H	TOP SECTION #8
3' H/H	SECTION #9
3.25' H/H	SECTION #10
3.5' H/H	SECTION #11
3.75' H/H	SECTION #12
4' H/H	SECTION #13
5' H/H	SECTION #14
6' H/H	

C A N A D A	MAXIMUM ALLOWABLE ANTENNA AREA – PER CSA-S37-1								
	ROUND ANTENNA MEMBER / FLAT ANTENNA MEMBER								
	CLASS 1 (10mm ICE)			CLASS 1 (25mm ICE)			CLASS 3 (25mm ICE)		
	350Pa	450Pa	550Pa	350Pa	450Pa	550Pa	350Pa	450Pa	550Pa
	82/58	58/41	42/30	82/58	58/41	42/30	180/120	128/85	94/63

INSULATING STYROFOAM REQUIRED WHERE FROST PENETRATION EXCEEDS 6 FEET. PLACE STYROFOAM ON SLAB AND EXTEND 3 FEET BEYOND EDGE. HIGHLOAD 40 INSULATION BY DOW CHEMICALS IS RECOMMENDED.




CUBIC YARDS of CONCRETE				
PAD	RND PIER	SQ PIER	TOTAL RND	TOTAL SQ
10.13	0.77	0.98	12.45	13.08

CONFIDENTIAL: ALL INTELLECTUAL PROPERTY RIGHTS HEREIN ARE THE PROPERTY OF TRYLON MANUFACTURING COMPANY LTD. ALL DUPLICATION, RECORDING, DISCLOSURE OR USE IS PROHIBITED WITHOUT WRITTEN CONSENT OF TRYLON MANUFACTURING COMPANY LTD.



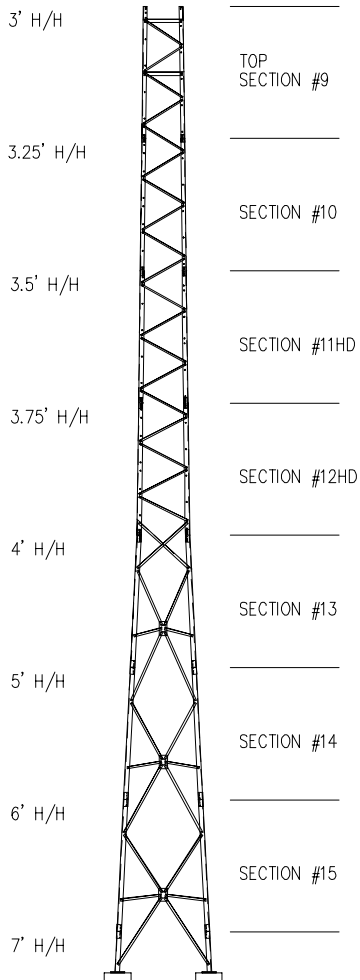
CUSTOMER:		SITE:		SCALE: 115.000	
DATE: 16 FEB 07		BY: EP		CHK: APP:	
TITLE: 70' S800 SUPERTITAN TOWER				DRAWING NO. 000001.620.0315	

- NOTES: 1) KNOCK-DOWN PART NUMBER 5.94.S800.070.  
2) PRE-ASSEMBLED PART NUMBER: NOT AVAILABLE.  
3) ANTENNA LOADS ARE CENTRALLY LOCATED AND BALANCED, 3-FT OR LESS ABOVE THE TOWER TOP.  
4) WIND LOADING ASSUMES (1) 1/2" TRANSMISSION LINE PER 10 SQ.FT. OF ROUND MEMBER ANTENNA AREA.

					<div> TRYLON Tsf</div>			
					CUSTOMER:	SITE:	SCALE:	115.000
					DATE:	BY:	CHK:	APP:
					16 FEB 07	EP		
					TITLE:			DRAWING NO.
					70' S800 SUPERTITAN TOWER			000001.620.0315
REV.	REV. BY:	CHK. BY:	DESCRIPTION	DATE				



70FT S900 SUPERTITAN TOWER

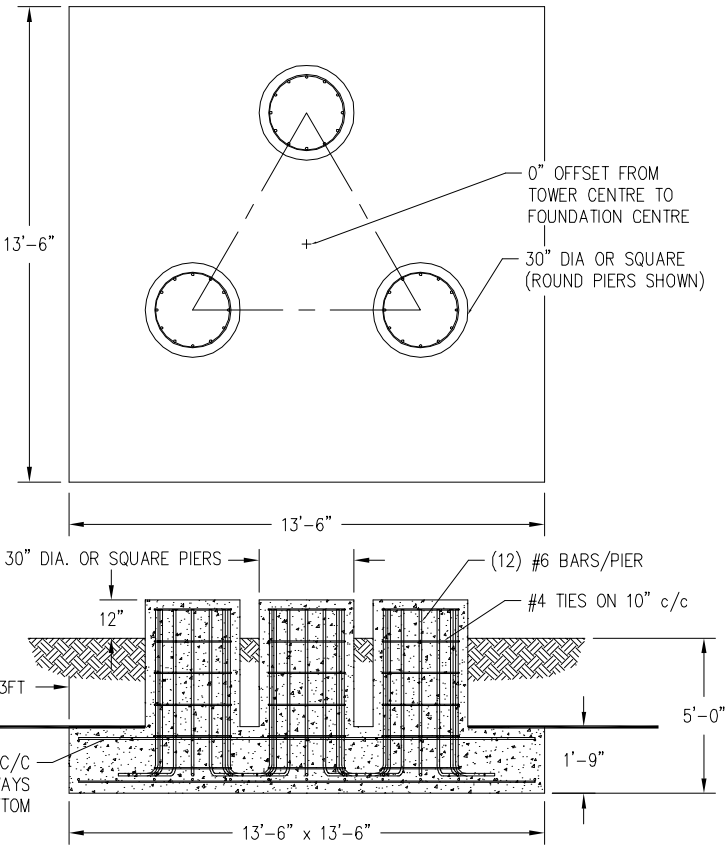


C A N A D A	MAXIMUM ALLOWABLE ANTENNA AREA - PER CSA-S37-1								
	ROUND ANTENNA MEMBER / FLAT ANTENNA MEMBER								
	CLASS 1 (10mm ICE)			CLASS 1 (25mm ICE)			CLASS 3 (25mm ICE)		
	350Pa	450Pa	550Pa	350Pa	450Pa	550Pa	350Pa	450Pa	550Pa
	82/58	60/42	45/32	82/58	60/42	45/32	187/125	136/91	102/68

FOUNDATION LOADS:  
MAX. OVERTURNING MOMENT (K\*FT) =  
MAX. SHEAR (kips) =  
MAX. AXIAL (kips) =

INSULATING STYROFOAM REQUIRED  
WHERE FROST PENETRATION EXCEEDS  
6 FEET. PLACE STYROFOAM ON SLAB  
AND EXTEND 3 FEET BEYOND EDGE.  
HIGHLOAD 40 INSULATION BY DOW  
CHEMICALS IS RECOMMENDED.

FOUNDATION DESIGN (NORMAL DRY SOIL)




CUBIC YARDS of CONCRETE				
PAD	RND PIER	SQ PIER	TOTAL RND	TOTAL SQ
11.81	0.77	0.98	14.13	14.76

- NOTES: 1) KNOCK-DOWN PART NUMBER 5.94.S900.070.  
2) PRE-ASSEMBLED PART NUMBER: NOT AVAILABLE.  
3) ANTENNA LOADS ARE CENTRALLY LOCATED AND BALANCED, 3-FT OR LESS ABOVE THE TOWER TOP.  
4) WIND LOADING ASSUMES (1) 1/2" TRANSMISSION LINE PER 10 SQ.FT. OF ROUND MEMBER ANTENNA AREA.

REV.	REV. BY:	CHK. BY:	DESCRIPTION	DATE

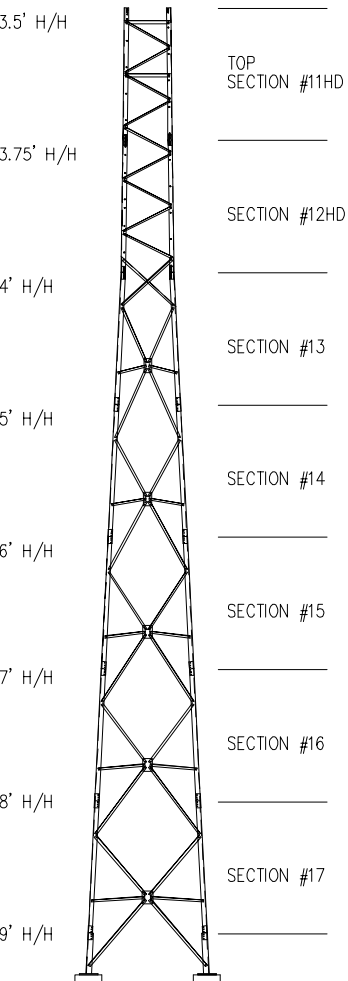
CONFIDENTIAL: ALL INTELLECTUAL PROPERTY RIGHTS HEREIN ARE THE PROPERTY OF TRYLON MANUFACTURING COMPANY LTD. ALL DUPLICATION, RECORDING, DISCLOSURE OR USE IS PROHIBITED WITHOUT WRITTEN CONSENT OF TRYLON MANUFACTURING COMPANY LTD.



**TRYLON Tsf**

CUSTOMER:		SITE:		SCALE: 115.000	
DATE: 16 FEB 07	BY: EP	CHK:	APP:		
TITLE: 70' S900 SUPERTITAN TOWER				DRAWING NO. 000001.620.0316	

70FT S1100 SUPERTITAN TOWER

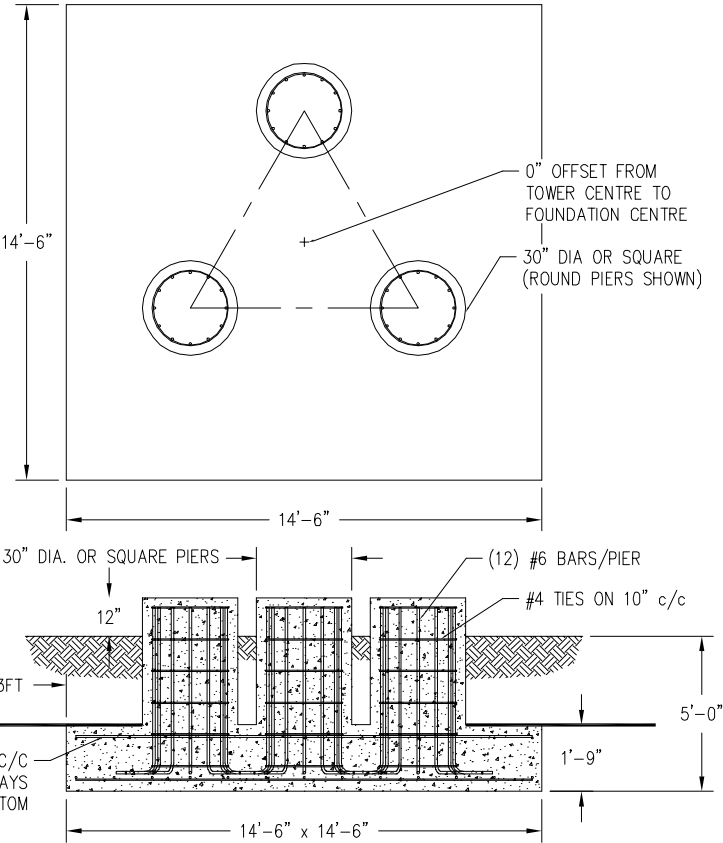


CANADA	MAXIMUM ALLOWABLE ANTENNA AREA – PER CSA-S37-1								
	ROUND ANTENNA MEMBER / FLAT ANTENNA MEMBER								
	CLASS 1 (10mm ICE)			CLASS 1 (25mm ICE)			CLASS 3 (25mm ICE)		
	350Pa	450Pa	550Pa	350Pa	450Pa	550Pa	350Pa	450Pa	550Pa
	149/106	108/77	81/57	149/106	108/77	81/57	380/253	282/188	218/145

FOUNDATION LOADS:  
MAX. OVERTURNING MOMENT (K\*FT) =  
MAX. SHEAR (kips) =  
MAX. AXIAL (kips) =

INSULATING STYROFOAM REQUIRED WHERE FROST PENETRATION EXCEEDS 6 FEET. PLACE STYROFOAM ON SLAB AND EXTEND 3 FEET BEYOND EDGE. HIGHLOAD 40 INSULATION BY DOW CHEMICALS IS RECOMMENDED.

FOUNDATION DESIGN (NORMAL DRY SOIL)



CUBIC YARDS of CONCRETE				
PAD	RND PIER	SQ PIER	TOTAL RND	TOTAL SQ
13.63	0.77	0.98	15.95	16.58

- NOTES: 1) KNOCK-DOWN PART NUMBER 5.94.S1100.070.  
2) PRE-ASSEMBLED PART NUMBER: NOT AVAILABLE.  
3) ANTENNA LOADS ARE CENTRALLY LOCATED AND BALANCED, 3-FT OR LESS ABOVE THE TOWER TOP.  
4) WIND LOADING ASSUMES (1) 1/2" TRANSMISSION LINE PER 10 SQ.FT. OF ROUND MEMBER ANTENNA AREA.

REV.	REV. BY:	CHK. BY:	DESCRIPTION	DATE

CONFIDENTIAL: ALL INTELLECTUAL PROPERTY RIGHTS HEREIN ARE THE PROPERTY OF TRYLON MANUFACTURING COMPANY LTD. ALL DUPLICATION, RECORDING, DISCLOSURE OR USE IS PROHIBITED WITHOUT WRITTEN CONSENT OF TRYLON MANUFACTURING COMPANY LTD.



CUSTOMER:		SITE:		SCALE: 115.000	
DATE: 16 FEB 07	BY: EP	CHK:	APP:		
TITLE: 70' S1100 SUPERTITAN TOWER				DRAWING NO. 000001.620.0318	