

Diagram of a 100-foot tower structure, divided into sections. The sections are labeled on the right side of the diagram:

- TOP SECTION #1
- SECTION #2
- SECTION #3
- SECTION #4
- SECTION #5
- SECTION #6
- SECTION #7
- SECTION #8

The height of each section is indicated on the left side of the diagram:

- 12" H/H
- 15" H/H
- 18" H/H
- 21" H/H
- 24" H/H
- 27" H/H
- 30" H/H
- 33" H/H
- 36" H/H

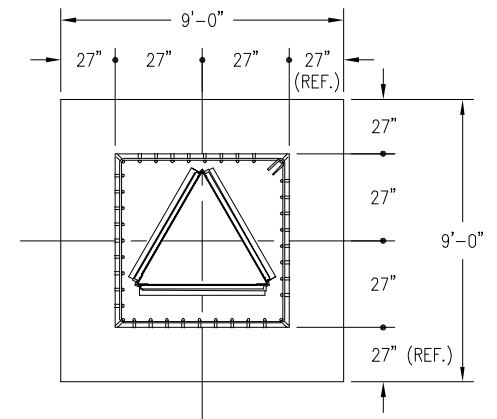
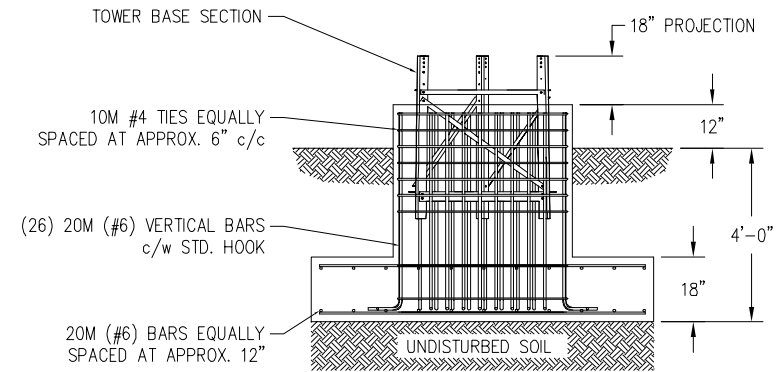
C A N A D A	MAXIMUM ALLOWABLE ANTENNA AREA – PER CSA–S37–01								
	ROUND ANTENNA MEMBER / FLAT ANTENNA MEMBER								
	CLASS 1 (10mm ICE)			CLASS 1 (25mm ICE)			CLASS 3 (25mm ICE)		
	350Pa	450Pa	550Pa	350Pa	450Pa	550Pa	350Pa	450Pa	550Pa
	10/7	1/--	--/--	10/7	--/--	--/--	21/14	11/7	3/2

– 5' EMBEDMENT SECTION INCLUDED IN KITS

NOTES: 1) KNOCK-DOWN PART NUMBER 5.94.S100.080.  
2) PRE-ASSEMBLED PART NUMBER: 5.95.S100.080.  
3) ANTENNA LOADS ARE CENTRALLY LOCATED AND BALANCED, 3-FT OR LESS ABOVE THE TOWER TOP.  
4) WIND LOADING ASSUMES (1) 1/2" TRANSMISSION LINE PER 10 SQ.FT. OF ROUND MEMBER ANTENNA AREA.

REV.	REV. BY:	CHK. BY:	DESCRIPTION		DATE

DESIGN ASSUMES THAT FROST DEPTH IS LESS THAN 4'-0"



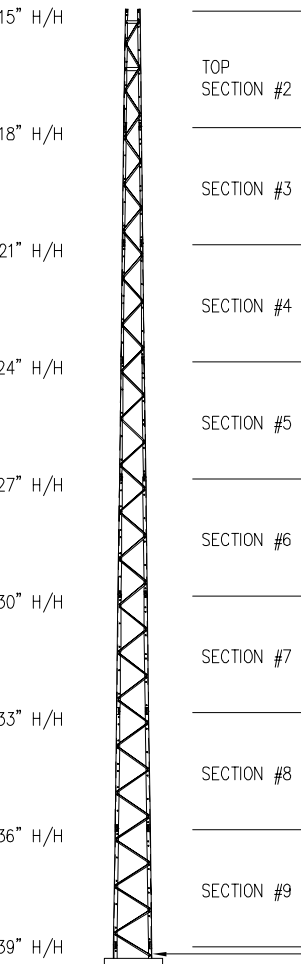
CUBIC YARDS OF CONCRETE		
PAD CONC VOL.	PIER CONC VOL.	TOTAL VOL.
4.5	2.6	7.1

CONFIDENTIAL: ALL INTELLECTUAL PROPERTY RIGHTS HEREIN ARE THE PROPERTY OF TRYLON MANUFACTURING COMPANY LTD. ALL DUPLICATION, RECORDING, DISCLOSURE OR USE IS PROHIBITED WITHOUT WRITTEN CONSENT OF TRYLON MANUFACTURING COMPANY LTD.



CUSTOMER:		SITE:		SCALE: 130.000	
DATE: 16 FEB 07		BY: MRH		CHK: APP:	
TITLE: 80' S100 SUPERTITAN TOWER				DRAWING NO. 000001.620.0319	

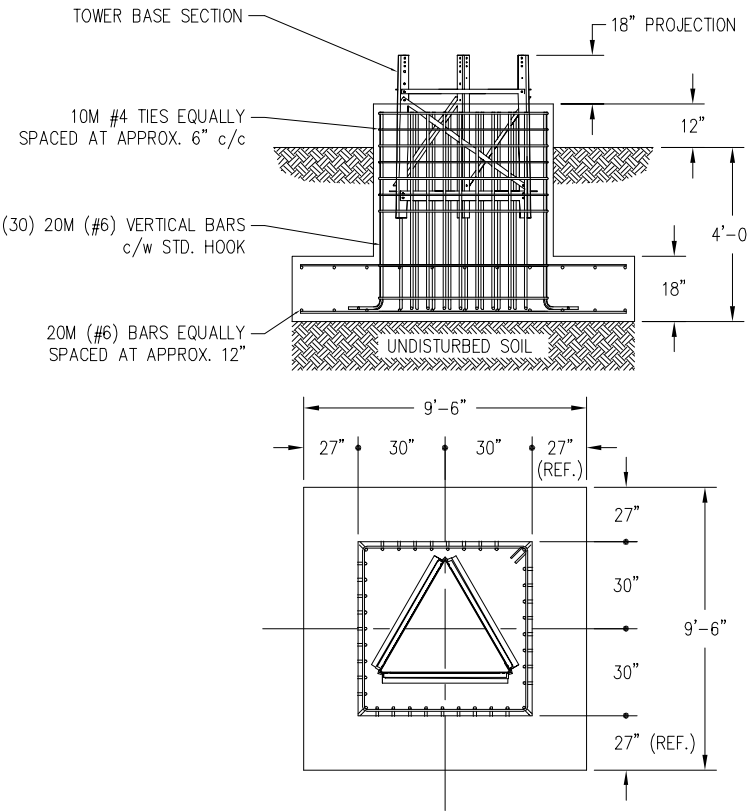
80FT S200 SUPERTITAN TOWER



CANADA	MAXIMUM ALLOWABLE ANTENNA AREA - PER CSA-S37-01								
	ROUND ANTENNA MEMBER / FLAT ANTENNA MEMBER								
	CLASS 1 (10mm ICE)			CLASS 1 (25mm ICE)			CLASS 3 (25mm ICE)		
	350Pa	450Pa	550Pa	350Pa	450Pa	550Pa	350Pa	450Pa	550Pa
	22/15	9/6	--/--	20/14	8/5	--/--	40/27	25/17	12/8

FOUNDATION LOADS:  
MAX. OVERTURNING MOMENT (K\*FT) =  
MAX. SHEAR (kips) =  
MAX. AXIAL (kips) =

FOUNDATION DESIGN (NORMAL DRY SOIL)  
DESIGN ASSUMES THAT FROST DEPTH IS LESS THAN 4'-0"



CUBIC YARDS OF CONCRETE		
PAD CONC VOL.	PIER CONC VOL.	TOTAL VOL.
5.0	3.2	8.2

NOTES: 1) KNOCK-DOWN PART NUMBER 5.94.S200.080.  
2) PRE-ASSEMBLED PART NUMBER: 5.95.S200.080.  
3) ANTENNA LOADS ARE CENTRALLY LOCATED AND BALANCED, 3-FT OR LESS ABOVE THE TOWER TOP.  
4) WIND LOADING ASSUMES (1) 1/2" TRANSMISSION LINE PER 10 SQ.FT. OF ROUND MEMBER ANTENNA AREA.

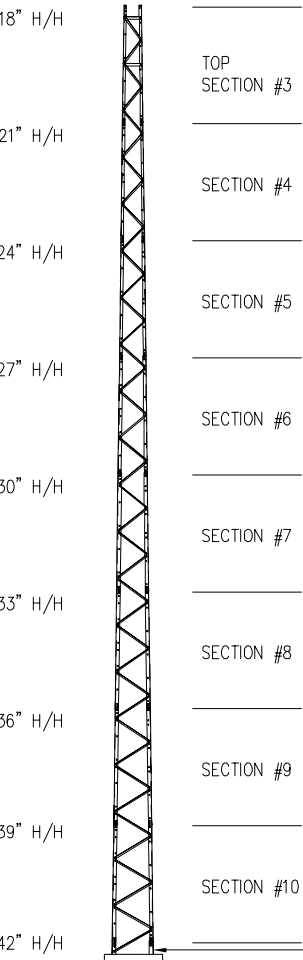
REV.	REV. BY:	CHK. BY:	DESCRIPTION	DATE

CONFIDENTIAL: ALL INTELLECTUAL PROPERTY RIGHTS HEREIN ARE THE PROPERTY OF TRYLON MANUFACTURING COMPANY LTD. ALL DUPLICATION, RECORDING, DISCLOSURE OR USE IS PROHIBITED WITHOUT WRITTEN CONSENT OF TRYLON MANUFACTURING COMPANY LTD.

TRYLON Tsf

CUSTOMER:	SITE:	SCALE: 130.000
DATE: 16 FEB 07	BY: MRH	CHK: APP:
TITLE: 80' S200 SUPERTITAN TOWER		DRAWING NO. 000001.620.0320

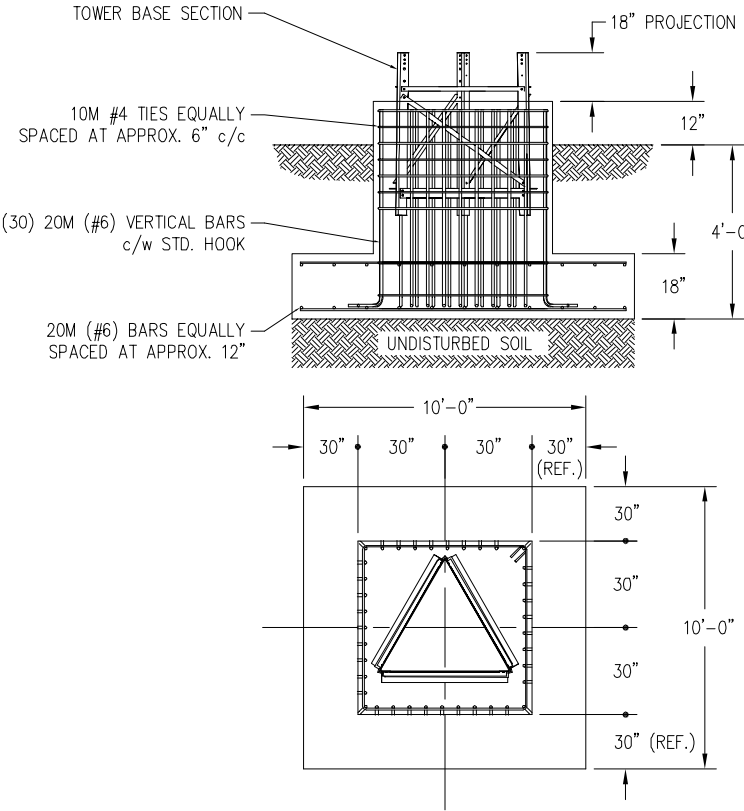
80FT S300 SUPERTITAN TOWER



C A N A D A	MAXIMUM ALLOWABLE ANTENNA AREA - PER CSA-S37-01								
	ROUND ANTENNA MEMBER / FLAT ANTENNA MEMBER								
	CLASS 1 (10mm ICE)			CLASS 1 (25mm ICE)			CLASS 3 (25mm ICE)		
	350Pa	450Pa	550Pa	350Pa	450Pa	550Pa	350Pa	450Pa	550Pa
	25/17	9/6	--/--	21/15	9/6	--/--	50/33	27/18	13/9

FOUNDATION LOADS:  
MAX. OVERTURNING MOMENT (K\*FT) =  
MAX. SHEAR (kips) =  
MAX. AXIAL (kips) =

FOUNDATION DESIGN (NORMAL DRY SOIL)  
DESIGN ASSUMES THAT FROST DEPTH IS LESS THAN 4'-0"



CUBIC YARDS OF CONCRETE		
PAD CONC VOL.	PIER CONC VOL.	TOTAL VOL.
5.6	3.2	8.8

- NOTES: 1) KNOCK-DOWN PART NUMBER 5.94.S300.080.  
2) PRE-ASSEMBLED PART NUMBER: 5.95.S300.080.  
3) ANTENNA LOADS ARE CENTRALLY LOCATED AND BALANCED, 3-FT OR LESS ABOVE THE TOWER TOP.  
4) WIND LOADING ASSUMES (1) 1/2" TRANSMISSION LINE PER 10 SQ.FT. OF ROUND MEMBER ANTENNA AREA.

REV.	REV. BY:	CHK. BY:	DESCRIPTION	DATE

CONFIDENTIAL: ALL INTELLECTUAL PROPERTY RIGHTS HEREIN ARE THE PROPERTY OF TRYLON MANUFACTURING COMPANY LTD. ALL DUPLICATION, RECORDING, DISCLOSURE OR USE IS PROHIBITED WITHOUT WRITTEN CONSENT OF TRYLON MANUFACTURING COMPANY LTD.

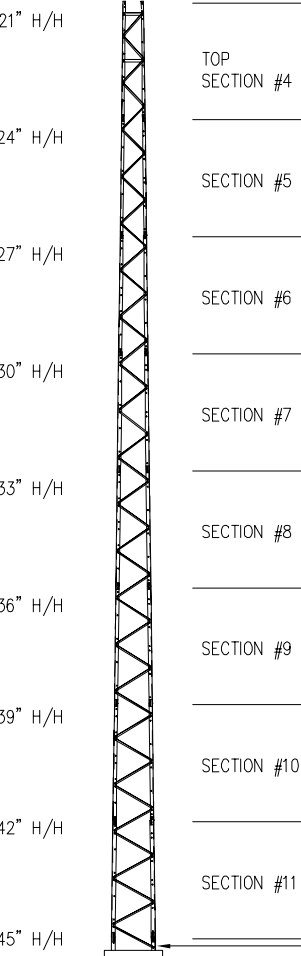
**TRYLON TSF**

CUSTOMER: SITE: SCALE: 130.000

DATE: 16 FEB 07 BY: MRH CHK: APP:

TITLE: 80' S300 SUPERTITAN TOWER DRAWING NO. 000001.620.0321

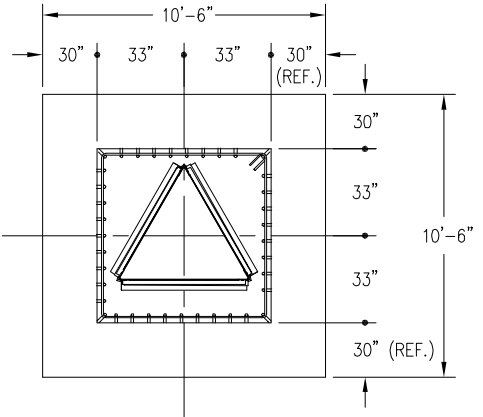
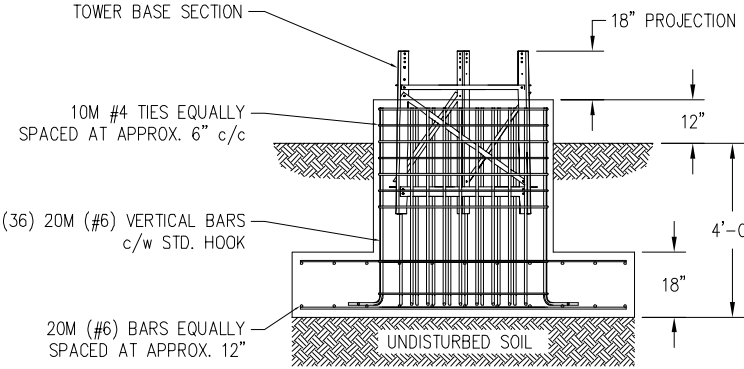
80FT S400 SUPERTITAN TOWER



C A N A D A	MAXIMUM ALLOWABLE ANTENNA AREA - PER CSA-S37-01								
	ROUND ANTENNA MEMBER / FLAT ANTENNA MEMBER								
	CLASS 1 (10mm ICE)			CLASS 1 (25mm ICE)			CLASS 3 (25mm ICE)		
	350Pa	450Pa	550Pa	350Pa	450Pa	550Pa	350Pa	450Pa	550Pa
	30/21	12/8	--/--	30/21	12/8	--/--	60/34	34/23	17/11

FOUNDATION LOADS:  
MAX. OVERTURNING MOMENT (K\*FT) =  
MAX. SHEAR (kips) =  
MAX. AXIAL (kips) =

FOUNDATION DESIGN (NORMAL DRY SOIL)  
DESIGN ASSUMES THAT FROST DEPTH IS LESS THAN 4'-0"



CUBIC YARDS OF CONCRETE		
PAD CONC VOL.	PIER CONC VOL.	TOTAL VOL.
6.1	3.9	10.0

CONFIDENTIAL: ALL INTELLECTUAL PROPERTY RIGHTS HEREIN ARE THE PROPERTY OF TRYLON MANUFACTURING COMPANY LTD. ALL DUPLICATION, RECORDING, DISCLOSURE OR USE IS PROHIBITED WITHOUT WRITTEN CONSENT OF TRYLON MANUFACTURING COMPANY LTD.



- NOTES: 1) KNOCK-DOWN PART NUMBER 5.94.S400.080.  
2) PRE-ASSEMBLED PART NUMBER: 5.95.S400.080.  
3) ANTENNA LOADS ARE CENTRALLY LOCATED AND BALANCED, 3-FT OR LESS ABOVE THE TOWER TOP.  
4) WIND LOADING ASSUMES (1) 1/2" TRANSMISSION LINE PER 10 SQ.FT. OF ROUND MEMBER ANTENNA AREA.

REV.	REV. BY:	CHK. BY:	DESCRIPTION	DATE	CUSTOMER:	SITE:	SCALE: 130.000
					DATE: 16 FEB 07	BY: MRH	CHK: APP:
					TITLE: 80' S400 SUPERTITAN TOWER	DRAWING NO. 000001.620.0322	

2' H/H

2.25' H/H

2.5' H/H

2.75' H/H

3' H/H

3.25' H/H

3.5' H/H

3.75' H/H

4' H/H

TOP SECTION #5

SECTION #6

SECTION #7

SECTION #8

SECTION #9

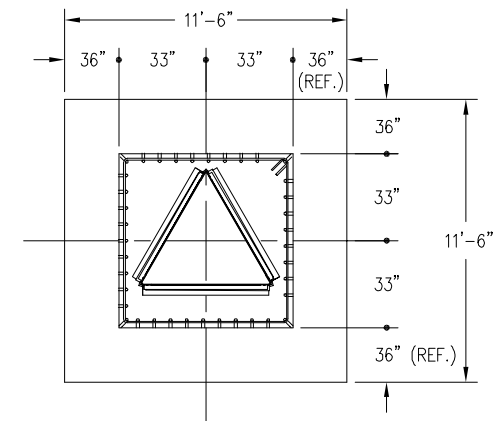
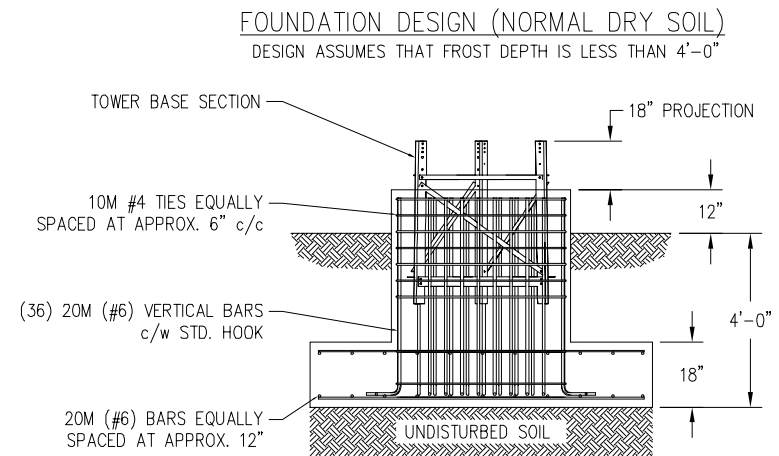
SECTION #10

SECTION #11

SECTION #12

C A N A D A	MAXIMUM ALLOWABLE ANTENNA AREA – PER CSA–S37–01								
	ROUND ANTENNA MEMBER / FLAT ANTENNA MEMBER								
	CLASS 1 (10mm ICE)			CLASS 1 (25mm ICE)			CLASS 3 (25mm ICE)		
	350Pa	450Pa	550Pa	350Pa	450Pa	550Pa	350Pa	450Pa	550Pa
	30/12	12/8	--/--	30/21	12/8	--/--	61/41	35/23	17/11

FOUNDATION LOADS:  
MAX. OVERTURNING MOMENT (K\*FT) =  
MAX. SHEAR (kips) =  
MAX. AXIAL (kips) =



CUBIC YARDS OF CONCRETE		
PAD CONC VOL.	PIER CONC VOL.	TOTAL VOL.
7.4	3.9	11.3

CONFIDENTIAL: ALL INTELLECTUAL PROPERTY RIGHTS HEREIN ARE THE PROPERTY OF TRYLON MANUFACTURING COMPANY LTD. ALL DUPLICATION, RECORDING, DISCLOSURE OR USE IS PROHIBITED WITHOUT WRITTEN CONSENT OF TRYLON MANUFACTURING COMPANY LTD.



CUSTOMER:		SITE:		SCALE: 130.000	
DATE: 16 FEB 07		BY: MRH	CHK:		APP:
TITLE: 80' S500 SUPERTITAN TOWER				DRAWING NO. 000001.620.0323	

- NOTES: 1) KNOCK-DOWN PART NUMBER 5.94.S500.080.  
2) PRE-ASSEMBLED PART NUMBER: 5.95.S500.080.  
3) ANTENNA LOADS ARE CENTRALLY LOCATED AND BALANCED, 3-FT OR LESS ABOVE THE TOWER TOP.  
4) WIND LOADING ASSUMES (1) 1/2" TRANSMISSION LINE PER 10 SQ.FT. OF ROUND MEMBER ANTENNA AREA.


					 <b>TRYLON TSE</b>
					CUSTOMER: _____ SITE: _____ SCALE: 130.000 DATE: 16 FEB 07 BY: _____ MRH CHK: _____ APP: _____ TITLE: _____ DRAWING NO. 000001.620.0323
REV.	REV. BY.	CHK. BY.	DESCRIPTION	DATE	

Diagram illustrating the vertical structure of a tower, divided into sections with corresponding height increments:

- 2' H/H
- 2.25' H/H
- 2.5' H/H
- 2.75' H/H
- 3' H/H
- 3.25' H/H
- 3.5' H/H
- 3.75' H/H
- 4' H/H

Labels on the right side of the diagram indicate the sections:

- TOP SECTION #5
- SECTION #6
- SECTION #7
- SECTION #8
- SECTION #9
- SECTION #10
- SECTION #11
- SECTION #12

C A N A D A	MAXIMUM ALLOWABLE ANTENNA AREA – PER CSA–S37–01								
	ROUND ANTENNA MEMBER / FLAT ANTENNA MEMBER								
	CLASS 1 (10mm ICE)			CLASS 1 (25mm ICE)			CLASS 3 (25mm ICE)		
	350Pa	450Pa	550Pa	350Pa	450Pa	550Pa	350Pa	450Pa	550Pa
	60/42	37/26	20/14	53/37	37/26	20/14	91/62	62/41	43/28

### FOUNDATION DESIGN (NORMAL DRY SOIL)

DESIGN ASSUMES THAT FROST DEPTH IS LESS THAN 4'-0"

TOWER BASE SECTION

18" PROJECTION

12"

4'-0"

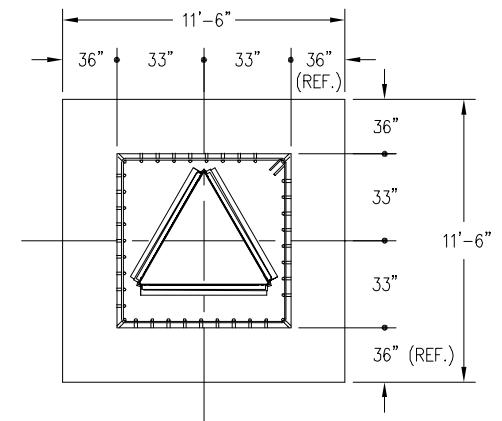
18"

UNDISTURBED SOIL

10M #4 TIES EQUALLY SPACED AT APPROX. 6" c/c

(36) 20M (#6) VERTICAL BARS c/w STD. HOOK

20M (#6) BARS EQUALLY SPACED AT APPROX. 12"




CUBIC YARDS OF CONCRETE		
PAD CONC VOL.	PIER CONC VOL.	TOTAL VOL.
7.4	3.9	11.3

CONFIDENTIAL: ALL INTELLECTUAL PROPERTY RIGHTS HEREIN ARE THE PROPERTY OF TRYLON MANUFACTURING COMPANY LTD. ALL DUPLICATION, RECORDING, DISCLOSURE OR USE IS PROHIBITED WITHOUT WRITTEN CONSENT OF TRYLON MANUFACTURING COMPANY LTD.

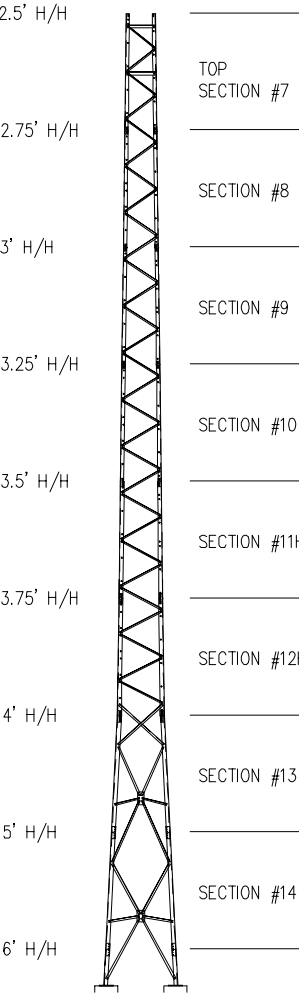


CUSTOMER:		SITE:		SCALE: 130.000	
DATE: 16 FEB 07		BY: MRH	CHK:		APP:
TITLE: 80' H500 SUPERTITAN TOWER				DRAWING NO. 000001.620.0324	

- NOTES: 1) KNOCK-DOWN PART NUMBER 5.94.H500.080.  
2) PRE-ASSEMBLED PART NUMBER: 5.95.H500.080.  
3) ANTENNA LOADS ARE CENTRALLY LOCATED AND BALANCED, 3-FT OR LESS ABOVE THE TOWER TOP.  
4) WIND LOADING ASSUMES (1) 1/2" TRANSMISSION LINE PER 10 SQ.FT. OF ROUND MEMBER ANTENNA AREA.

						 <b>TRYLON TSE</b>	
					CUSTOMER:	SITE:	SCALE: 130.000
					DATE: 16 FEB 07	BY: MRH	CHK: APP:
					TITLE: 80' H500 SUPERTITAN TOWER		DRAWING NO. 000001.620.0324
REV.	REV. BY.	CHK. SY.	DESCRIPTION	DATE			

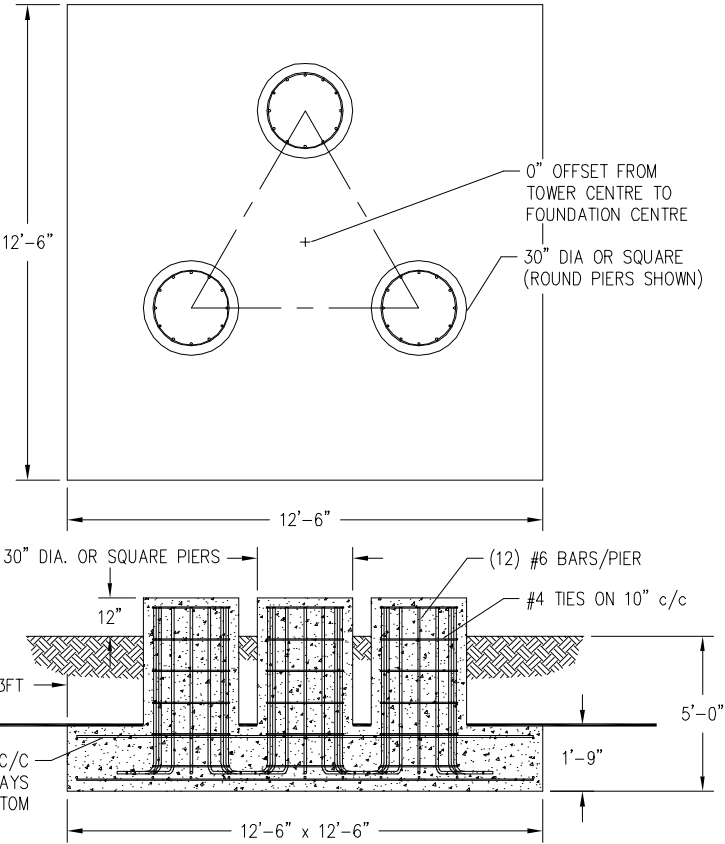
80FT S700 SUPERTITAN TOWER



C A N A D A	MAXIMUM ALLOWABLE ANTENNA AREA – PER CSA–S37–01								
	ROUND ANTENNA MEMBER / FLAT ANTENNA MEMBER								
	CLASS 1 (10mm ICE)			CLASS 1 (25mm ICE)			CLASS 3 (25mm ICE)		
	350Pa	450Pa	550Pa	350Pa	450Pa	550Pa	350Pa	450Pa	550Pa
	73/52	47/33	30/21	73/52	47/33	30/21	172/115	116/77	80/53

FOUNDATION LOADS:  
MAX. OVERTURNING MOMENT (K\*FT) =  
MAX. SHEAR (kips) =  
MAX. AXIAL (kips) =

FOUNDATION DESIGN (NORMAL DRY SOIL)




CUBIC YARDS of CONCRETE				
PAD	RND PIER	SQ PIER	TOTAL RND	TOTAL SQ
10.13	0.77	0.98	12.45	13.08

- NOTES: 1) KNOCK-DOWN PART NUMBER 5.94.S700.080.  
2) PRE-ASSEMBLED PART NUMBER: NOT AVAILABLE.  
3) ANTENNA LOADS ARE CENTRALLY LOCATED AND BALANCED, 3-FT OR LESS ABOVE THE TOWER TOP.  
4) WIND LOADING ASSUMES (1) 1/2" TRANSMISSION LINE PER 10 SQ.FT. OF ROUND MEMBER ANTENNA AREA.

REV.	REV. BY:	CHK. BY:	DESCRIPTION	DATE

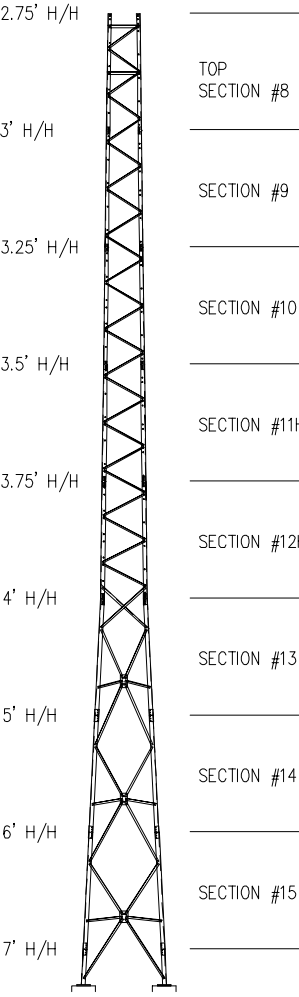
CONFIDENTIAL: ALL INTELLECTUAL PROPERTY RIGHTS HEREIN ARE THE PROPERTY OF TRYLON MANUFACTURING COMPANY LTD. ALL DUPLICATION, RECORDING, DISCLOSURE OR USE IS PROHIBITED WITHOUT WRITTEN CONSENT OF TRYLON MANUFACTURING COMPANY LTD.



**TRYLON Tsf**

CUSTOMER:	SITE:	SCALE:
DATE: 16 FEB 07	BY: MRH	CHK: APP:
TITLE: 80' S700 SUPERTITAN TOWER		DRAWING NO. 000001.620.0325

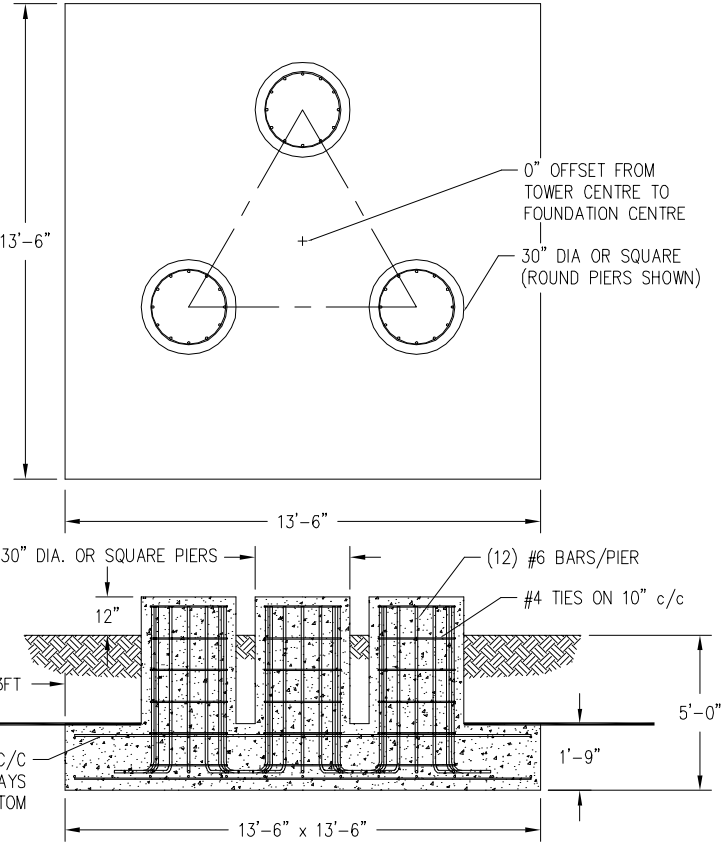
80FT S800 SUPERTITAN TOWER



C A N A D A	MAXIMUM ALLOWABLE ANTENNA AREA – PER CSA-S37-01								
	ROUND ANTENNA MEMBER / FLAT ANTENNA MEMBER								
	CLASS 1 (10mm ICE)			CLASS 1 (25mm ICE)			CLASS 3 (25mm ICE)		
	350Pa	450Pa	550Pa	350Pa	450Pa	550Pa	350Pa	450Pa	550Pa
	79/56	55/39	40/28	79/56	55/39	40/28	177/118	122/81	88/59

FOUNDATION LOADS:  
MAX. OVERTURNING MOMENT (K\*FT) =  
MAX. SHEAR (kips) =  
MAX. AXIAL (kips) =

FOUNDATION DESIGN (NORMAL DRY SOIL)




CUBIC YARDS of CONCRETE				
PAD	RND PIER	SQ PIER	TOTAL RND	TOTAL SQ
11.81	0.77	0.98	14.13	14.76

- NOTES: 1) KNOCK-DOWN PART NUMBER 5.94.S800.080.  
2) PRE-ASSEMBLED PART NUMBER: NOT AVAILABLE.  
3) ANTENNA LOADS ARE CENTRALLY LOCATED AND BALANCED, 3-FT OR LESS ABOVE THE TOWER TOP.  
4) WIND LOADING ASSUMES (1) 1/2" TRANSMISSION LINE PER 10 SQ.FT. OF ROUND MEMBER ANTENNA AREA.

REV.	REV. BY:	CHK. BY:	DESCRIPTION	DATE

CONFIDENTIAL: ALL INTELLECTUAL PROPERTY RIGHTS HEREIN ARE THE PROPERTY OF TRYLON MANUFACTURING COMPANY LTD. ALL DUPLICATION, RECORDING, DISCLOSURE OR USE IS PROHIBITED WITHOUT WRITTEN CONSENT OF TRYLON MANUFACTURING COMPANY LTD.

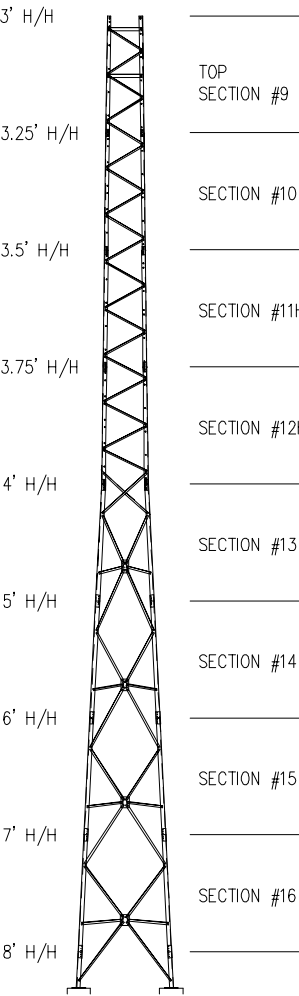


**TRYLON Tsf**

CUSTOMER:	SITE:	SCALE:
DATE: 16 FEB 07	BY: MRH	CHK: APP:
TITLE: 80' S800 SUPERTITAN TOWER		DRAWING NO. 000001.620.0326



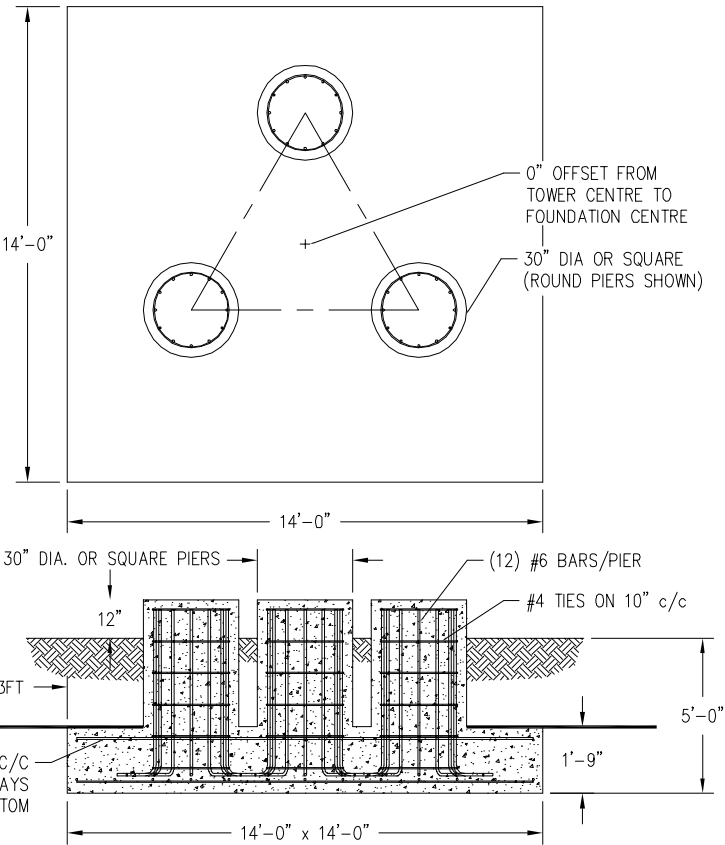
80FT S900 SUPERTITAN TOWER



C A N N A D A	MAXIMUM ALLOWABLE ANTENNA AREA – PER CSA–S37–01								
	ROUND ANTENNA MEMBER / FLAT ANTENNA MEMBER								
	CLASS 1 (10mm ICE)			CLASS 1 (25mm ICE)			CLASS 3 (25mm ICE)		
	350Pa	450Pa	550Pa	350Pa	450Pa	550Pa	350Pa	450Pa	550Pa
	80/57	57/40	43/30	80/57	57/40	43/30	181/121	125/83	100/87

FOUNDATION LOADS:  
MAX. OVERTURNING MOMENT (K\*FT) =  
MAX. SHEAR (kips) =  
MAX. AXIAL (kips) =

FOUNDATION DESIGN (NORMAL DRY SOIL)



CUBIC YARDS of CONCRETE				
PAD	RND PIER	SQ PIER	TOTAL RND	TOTAL SQ
12.70	0.77	0.98	15.02	15.66

- NOTES: 1) KNOCK-DOWN PART NUMBER 5.94.S900.080.  
2) PRE-ASSEMBLED PART NUMBER: NOT AVAILABLE.  
3) ANTENNA LOADS ARE CENTRALLY LOCATED AND BALANCED, 3-FT OR LESS ABOVE THE TOWER TOP.  
4) WIND LOADING ASSUMES (1) 1/2" TRANSMISSION LINE PER 10 SQ.FT. OF ROUND MEMBER ANTENNA AREA.

REV.	REV. BY:	CHK. BY:	DESCRIPTION	DATE

CONFIDENTIAL: ALL INTELLECTUAL PROPERTY RIGHTS HEREIN ARE THE PROPERTY OF TRYLON MANUFACTURING COMPANY LTD. ALL DUPLICATION, RECORDING, DISCLOSURE OR USE IS PROHIBITED WITHOUT WRITTEN CONSENT OF TRYLON MANUFACTURING COMPANY LTD.

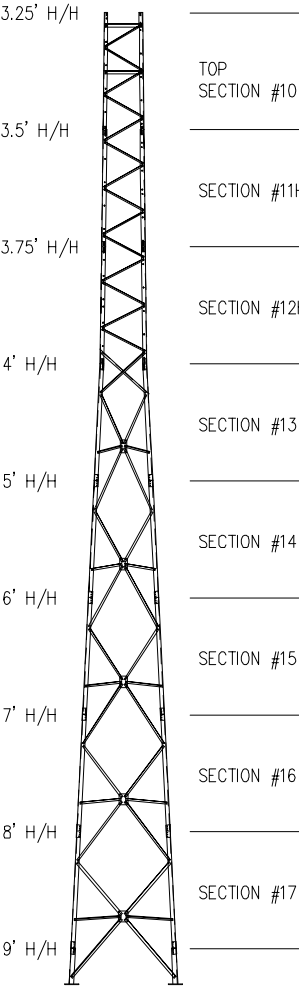
**TRYLON TSE**

CUSTOMER: SITE: SCALE: 130.000

DATE: 16 FEB 07 BY: MRH CHK: APP:

TITLE: 80' S900 SUPERTITAN TOWER DRAWING NO. 000001.620.0327

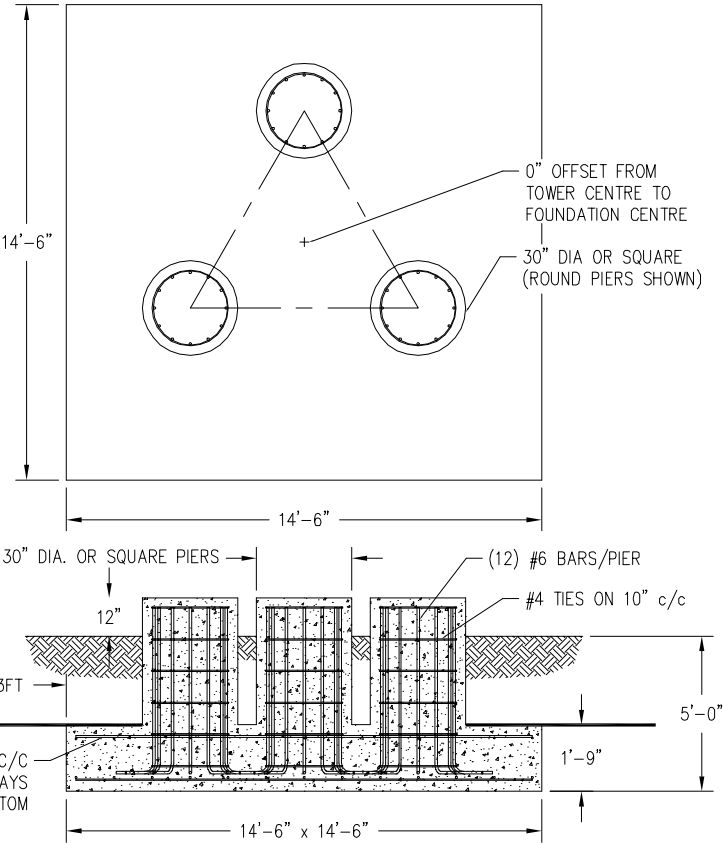
80FT S1000 SUPERTITAN TOWER



C A N N A D A	MAXIMUM ALLOWABLE ANTENNA AREA – PER CSA–S37–01								
	ROUND ANTENNA MEMBER / FLAT ANTENNA MEMBER								
	CLASS 1 (10mm ICE)			CLASS 1 (25mm ICE)			CLASS 3 (25mm ICE)		
	350Pa	450Pa	550Pa	350Pa	450Pa	550Pa	350Pa	450Pa	550Pa
	87/62	65/46	53/37	87/62	65/46	53/37	188/125	140/93	108/72

FOUNDATION LOADS:  
MAX. OVERTURNING MOMENT (K\*FT) =  
MAX. SHEAR (kips) =  
MAX. AXIAL (kips) =

FOUNDATION DESIGN (NORMAL DRY SOIL)



CUBIC YARDS of CONCRETE				
PAD	RND PIER	SQ PIER	TOTAL RND	TOTAL SQ
13.63	0.77	0.98	15.95	16.58

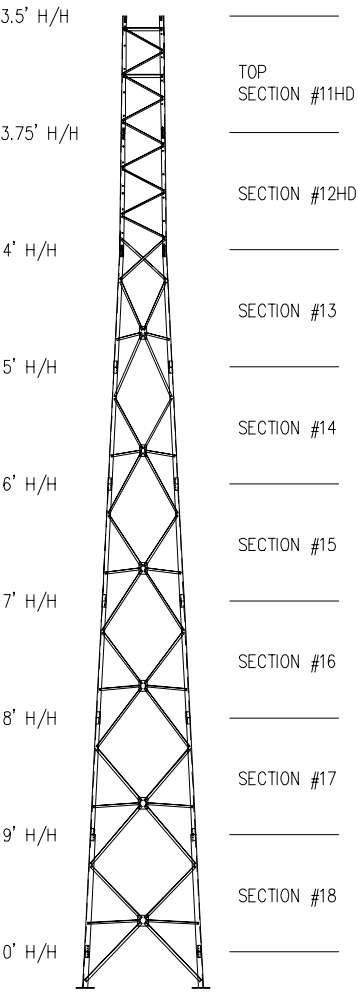
NOTES: 1) KNOCK-DOWN PART NUMBER 5.94.S1000.080.  
2) PRE-ASSEMBLED PART NUMBER: NOT AVAILABLE.  
3) ANTENNA LOADS ARE CENTRALLY LOCATED AND BALANCED, 3-FT OR LESS ABOVE THE TOWER TOP.  
4) WIND LOADING ASSUMES (1) 1/2" TRANSMISSION LINE PER 10 SQ.FT. OF ROUND MEMBER ANTENNA AREA.

REV.	REV. BY:	CHK. BY:	DESCRIPTION	DATE

CONFIDENTIAL: ALL INTELLECTUAL PROPERTY RIGHTS HEREIN ARE THE PROPERTY OF TRYLON MANUFACTURING COMPANY LTD. ALL DUPLICATION, RECORDING, DISCLOSURE OR USE IS PROHIBITED WITHOUT WRITTEN CONSENT OF TRYLON MANUFACTURING COMPANY LTD.

CUSTOMER:	SITE:	SCALE:
DATE: 16 FEB 07	BY: MRH	CHK: APP:
TITLE: 80' S1000 SUPERTITAN TOWER		DRAWING NO. 000001.620.0328

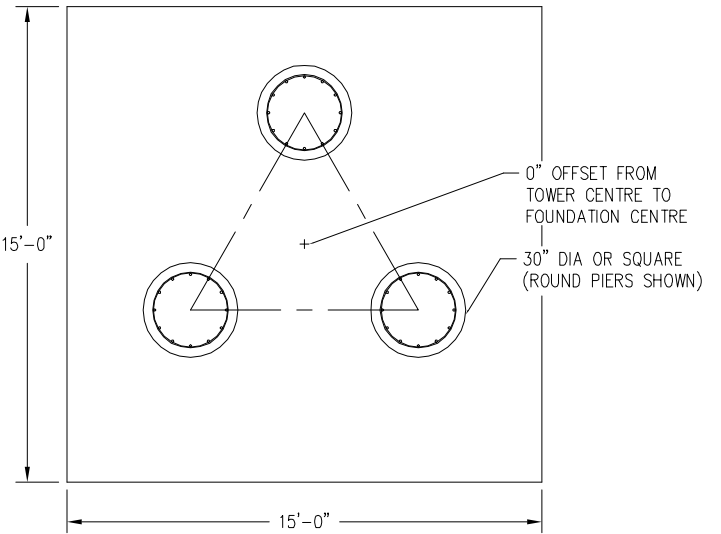
80FT S1100 SUPERTITAN TOWER



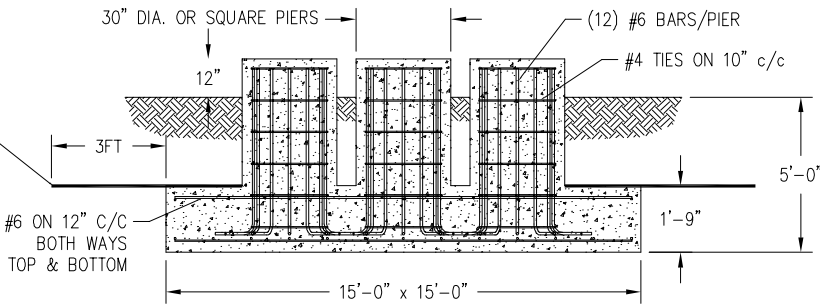
C A N N A D A	MAXIMUM ALLOWABLE ANTENNA AREA – PER CSA-S37-01								
	ROUND ANTENNA MEMBER / FLAT ANTENNA MEMBER								
	CLASS 1 (10mm ICE)			CLASS 1 (25mm ICE)			CLASS 3 (25mm ICE)		
	350Pa	450Pa	550Pa	350Pa	450Pa	550Pa	350Pa	450Pa	550Pa
	153/109	111/79	85/60	153/109	111/79	85/60	364/243	272/181	204/136

FOUNDATION LOADS:  
MAX. OVERTURNING MOMENT (K\*FT) =  
MAX. SHEAR (kips) =  
MAX. AXIAL (kips) =

FOUNDATION DESIGN (NORMAL DRY SOIL)



INSULATING STYROFOAM REQUIRED WHERE FROST PENETRATION EXCEEDS 6 FEET. PLACE STYROFOAM ON SLAB AND EXTEND 3 FEET BEYOND EDGE. HIGHLOAD 40 INSULATION BY DOW CHEMICALS IS RECOMMENDED.



CUBIC YARDS of CONCRETE				
PAD	RND PIER	SQ PIER	TOTAL RND	TOTAL SQ
14.58	0.77	0.98	16.90	17.53

- NOTES: 1) KNOCK-DOWN PART NUMBER 5.94.S1100.080.  
2) PRE-ASSEMBLED PART NUMBER: NOT AVAILABLE.  
3) ANTENNA LOADS ARE CENTRALLY LOCATED AND BALANCED, 3-FT OR LESS ABOVE THE TOWER TOP.  
4) WIND LOADING ASSUMES (1) 1/2" TRANSMISSION LINE PER 10 SQ.FT. OF ROUND MEMBER ANTENNA AREA.

REV.	REV. BY:	CHK. BY:	DESCRIPTION	DATE

CONFIDENTIAL: ALL INTELLECTUAL PROPERTY RIGHTS HEREIN ARE THE PROPERTY OF TRYLON MANUFACTURING COMPANY LTD. ALL DUPLICATION, RECORDING, DISCLOSURE OR USE IS PROHIBITED WITHOUT WRITTEN CONSENT OF TRYLON MANUFACTURING COMPANY LTD.

**TRYLON TSE**

CUSTOMER: SITE: SCALE: 130.000

DATE: 16 FEB 07 BY: MRH CHK: APP:

TITLE: 80' S1100 SUPERTITAN TOWER DRAWING NO. 000001.620.0329