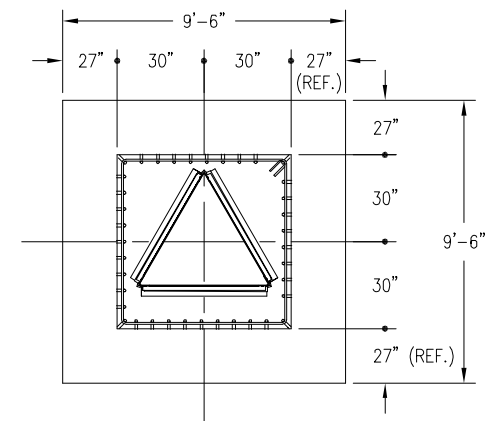
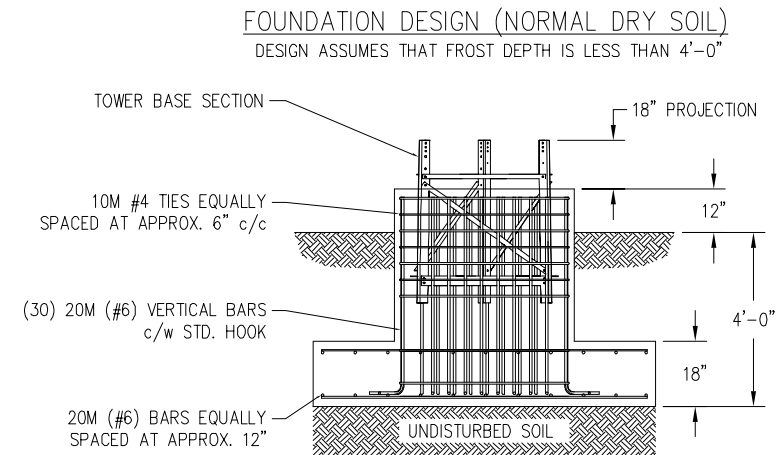


12" H/H		TOP SECTION #1
15" H/H		SECTION #2
18" H/H		SECTION #3
21" H/H		SECTION #4
24" H/H		SECTION #5
27" H/H		SECTION #6
30" H/H		SECTION #7
33" H/H		SECTION #8
36" H/H		SECTION #9
39" H/H		

C A N A D A	MAXIMUM ALLOWABLE ANTENNA AREA - PER CSA-S37-1								
	ROUND ANTENNA MEMBER / FLAT ANTENNA MEMBER								
	CLASS 1 (10mm ICE)			CLASS 1 (25mm ICE)			CLASS 3 (25mm ICE)		
	350Pa	450Pa	550Pa	350Pa	450Pa	550Pa	350Pa	450Pa	550Pa
	9/6	-/-	-/-	9/6	-/-	-/-	20/13	10/7	-/-

FOUNDATION LOADS:
MAX. OVERTURNING MOMENT (K*FT) =
MAX. SHEAR (kips) =
MAX. AXIAL (kips) =




CUBIC YARDS OF CONCRETE		
PAD CONC VOL.	PIER CONC VOL.	TOTAL VOL.
5.0	3.2	8.2

CONFIDENTIAL: ALL INTELLECTUAL PROPERTY RIGHTS HEREIN ARE THE PROPERTY OF TRYLON MANUFACTURING COMPANY LTD. ALL DUPLICATION, RECORDING, DISCLOSURE OR USE IS PROHIBITED WITHOUT WRITTEN CONSENT OF TRYLON MANUFACTURING COMPANY LTD.



CUSTOMER:		SITE:		SCALE: 145.000	
DATE: 16 FEB 07		BY: EP		CHK: APP:	
TITLE: 90' S100 SUPERTITAN TOWER				DRAWING NO. 000001.620.0330	

NOTES: 1) KNOCK-DOWN PART NUMBER 5.94.S100.090.
2) PRE-ASSEMBLED PART NUMBER: 5.95.S100.090.
3) ANTENNA LOADS ARE CENTRALLY LOCATED AND BALANCED, 3-FT OR LESS ABOVE THE TOWER TOP.
4) WIND LOADING ASSUMES (1) 1/2" TRANSMISSION LINE PER 10 SQ.FT. OF ROUND MEMBER ANTENNA AREA.

					 TRYLON TSE
					CUSTOMER: _____ SITE: _____ SCALE: 145,000
					DATE: 16 FEB 07 BY: EP CHK: _____ APP: _____
					TITLE: _____ DRAWING NO. 000001.620.0330
REV.	REV. BY.	CHK. BY.	DESCRIPTION	DATE	

15" H/H		TOP SECTION #2
18" H/H		SECTION #3
21" H/H		SECTION #4
24" H/H		SECTION #5
27" H/H		SECTION #6
30" H/H		SECTION #7
33" H/H		SECTION #8
36" H/H		SECTION #9
39" H/H		SECTION #10
42" H/H		

C A N A D A	MAXIMUM ALLOWABLE ANTENNA AREA – PER CSA-S37-1								
	ROUND ANTENNA MEMBER / FLAT ANTENNA MEMBER								
	CLASS 1 (10mm ICE)			CLASS 1 (25mm ICE)			CLASS 3 (25mm ICE)		
	350Pa	450Pa	550Pa	350Pa	450Pa	550Pa	350Pa	450Pa	550Pa
	10/7	-/-	-/-	10/7	-/-	-/-	32/21	14/9	-/-

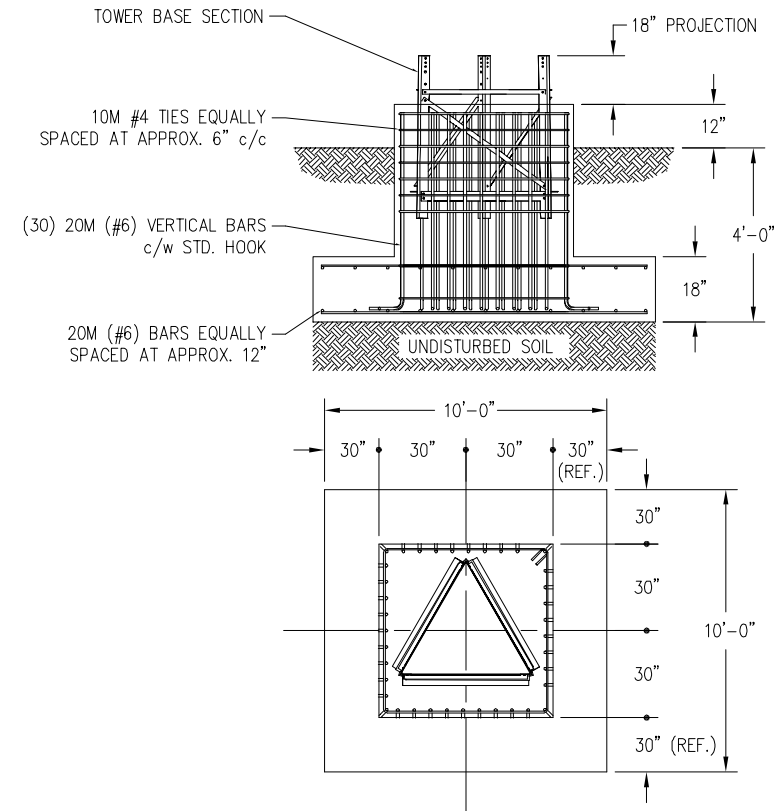
FOUNDATION LOADS:
MAX. OVERTURNING MOMENT (K*FT) =
MAX. SHEAR (kips) =
MAX. AXIAL (kips) =

— 5' EMBEDMENT SECTION
INCLUDED IN KITS

NOTES: 1) KNOCK-DOWN PART NUMBER 5.94.S200.090.
2) PRE-ASSEMBLED PART NUMBER: 5.95.S200.090.
3) ANTENNA LOADS ARE CENTRALLY LOCATED AND BALANCED, 3-FT OR LESS ABOVE THE TOWER TOP.
4) WIND LOADING ASSUMES (1) 1/2" TRANSMISSION LINE PER 10 SQ.FT. OF ROUND MEMBER ANTENNA AREA.

REV.	REV. RY.	CHK. RY.	DESCRIPTION		DATE

DESIGN ASSUMES THAT FROST DEPTH IS LESS THAN 4'-0"



CUBIC YARDS OF CONCRETE		
PAD CONC VOL.	PIER CONC VOL.	TOTAL VOL.
5.6	3.2	8.8

CONFIDENTIAL: ALL INTELLECTUAL PROPERTY RIGHTS HEREIN ARE THE PROPERTY OF TRYLON MANUFACTURING COMPANY LTD. ALL DUPLICATION, RECORDING, DISCLOSURE OR USE IS PROHIBITED WITHOUT WRITTEN CONSENT OF TRYLON MANUFACTURING COMPANY LTD.



CUSTOMER:		SITE:		SCALE: 145.000	
DATE: 16 FEB 07		BY: EP	CHK:		APP:
TITLE: 90' S200 SUPERTITAN TOWER				DRAWING NO. 000001.620.0331	

Diagram of a vertical tower structure with sections labeled 3 through 11. The tower is a lattice structure with a central vertical column and diagonal bracing. The sections are labeled on the right side of the tower. The height of each section is indicated on the left side of the tower.


Section	Height (H/H)
TOP SECTION #3	18"
SECTION #4	21"
SECTION #5	24"
SECTION #6	27"
SECTION #7	30"
SECTION #8	33"
SECTION #9	36"
SECTION #10	39"
SECTION #11	42"
	45"

C A N A D A	MAXIMUM ALLOWABLE ANTENNA AREA – PER CSA-S37-1								
	ROUND ANTENNA MEMBER / FLAT ANTENNA MEMBER								
	CLASS 1 (10mm ICE)			CLASS 1 (25mm ICE)			CLASS 3 (25mm ICE)		
	350Pa	450Pa	550Pa	350Pa	450Pa	550Pa	350Pa	450Pa	550Pa
	15/10	-/-	-/-	14/10	-/-	-/-	39/26	18/12	3/2

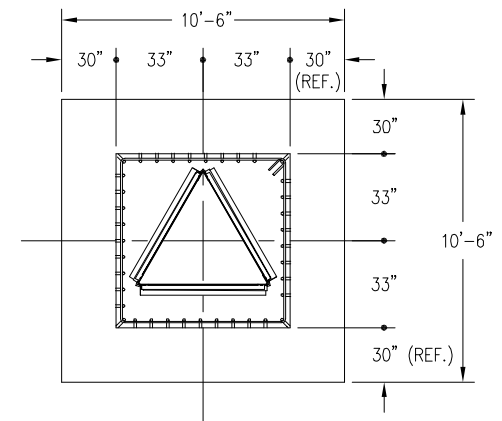
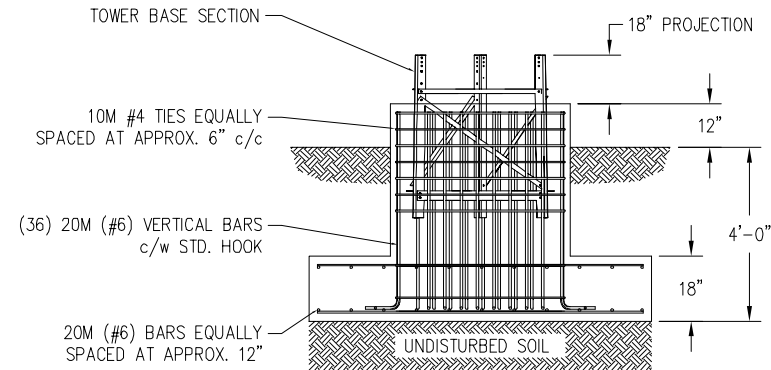
FOUNDATION LOADS:
MAX. OVERTURNING MOMENT (K*FT) =
MAX. SHEAR (kips) =
MAX. AXIAL (kips) =

— 5' EMBEDMENT SECTION
INCLUDED IN KITS

NOTES: 1) KNOCK-DOWN PART NUMBER 5.94.S300.090.
2) PRE-ASSEMBLED PART NUMBER: 5.95.S300.090.
3) ANTENNA LOADS ARE CENTRALLY LOCATED AND BALANCED, 3-FT OR LESS ABOVE THE TOWER TOP.
4) WIND LOADING ASSUMES (1) 1/2" TRANSMISSION LINE PER 10 SQ.FT. OF ROUND MEMBER ANTENNA AREA.

					 TRYLON TSE
					<div>CUSTOMER:</div> <div>SITE:</div> <div>SCALE: 145,000</div>
					<div>DATE: 16 FEB 07</div> <div>BY: EP</div> <div>CHK:</div> <div>APP:</div>
					<div>TITLE: 90' S300 SUPERTITAN TOWER</div> <div>DRAWING NO. 000001.620.0332</div>
REV.	REV. BY:	CHK. BY:	DESCRIPTION	DATE	

DESIGN ASSUMES THAT FROST DEPTH IS LESS THAN 4'-0"



CUBIC YARDS OF CONCRETE		
PAD CONC VOL.	PIER CONC VOL.	TOTAL VOL.
6.1	3.9	10.0

CONFIDENTIAL: ALL INTELLECTUAL PROPERTY RIGHTS HEREIN ARE THE PROPERTY OF TRYLON MANUFACTURING COMPANY LTD. ALL DUPLICATION, RECORDING, DISCLOSURE OR USE IS PROHIBITED WITHOUT WRITTEN CONSENT OF TRYLON MANUFACTURING COMPANY LTD.



Diagram illustrating the vertical structure of a tower, divided into 12 sections. The height segments are labeled on the left, and the section numbers are labeled on the right.

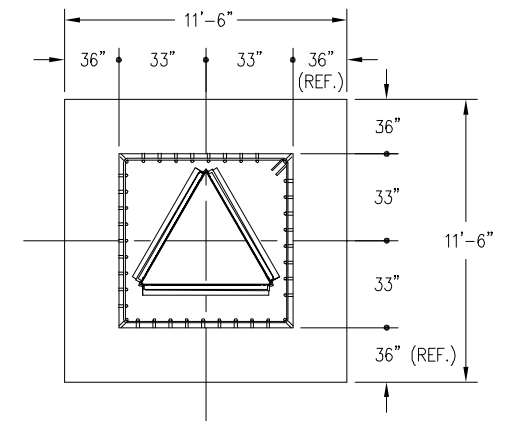
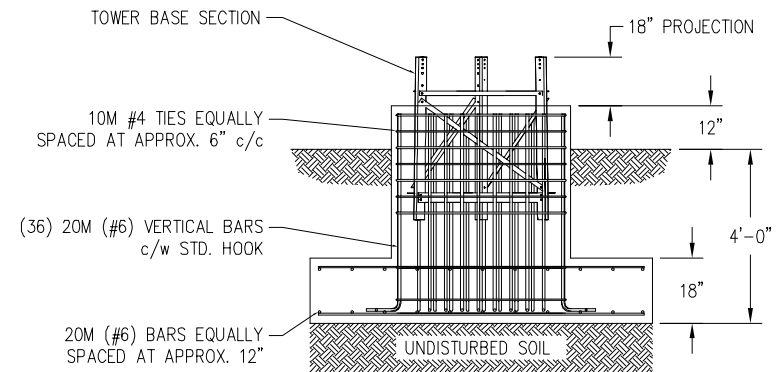
Height Segment	Section
1.75' H/H	TOP SECTION #4
2' H/H	SECTION #5
2.25' H/H	SECTION #6
2.5' H/H	SECTION #7
2.75' H/H	SECTION #8
3' H/H	SECTION #9
3.25' H/H	SECTION #10
3.5' H/H	SECTION #11
3.75' H/H	SECTION #12
4' H/H	

C A N A D A	MAXIMUM ALLOWABLE ANTENNA AREA – PER CSA-S37-1								
	ROUND ANTENNA MEMBER / FLAT ANTENNA MEMBER								
	CLASS 1 (10mm ICE)			CLASS 1 (25mm ICE)			CLASS 3 (25mm ICE)		
	350Pa	450Pa	550Pa	350Pa	450Pa	550Pa	350Pa	450Pa	550Pa
	15/10	-/-	-/-	15/10	-/-	-/-	41/27	19/13	3/2

– 5' EMBEDMENT SECTION INCLUDED IN KITS

REV.	REV. BY:	CHK. BY:	DESCRIPTION		DATE

DESIGN ASSUMES THAT FROST DEPTH IS LESS THAN 4'-0"



CUBIC YARDS OF CONCRETE		
PAD CONC VOL.	PIER CONC VOL.	TOTAL VOL.
7.4	3.9	11.3

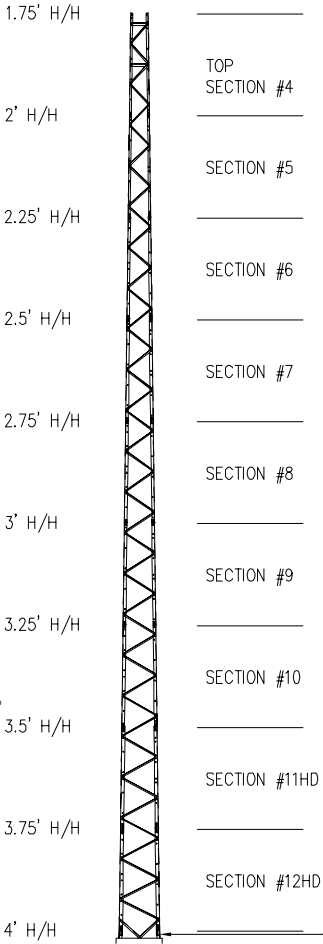
CONFIDENTIAL: ALL INTELLECTUAL PROPERTY RIGHTS HEREIN ARE THE PROPERTY OF TRYLON MANUFACTURING COMPANY LTD. ALL DUPLICATION, RECORDING, DISCLOSURE OR USE IS PROHIBITED WITHOUT WRITTEN CONSENT OF TRYLON MANUFACTURING COMPANY LTD.



CUSTOMER:		SITE:		SCALE: 145.000	
DATE: 17 FEB 07		BY: EP		CHK: APP:	
TITLE: 90' S400 SUPERTITAN TOWER				DRAWING NO. 000001.620.0333	

\\ENG-SERVER\improd\dwg\VAL\LD\DRAWINGS\5.94\00001.620.0334.dwg, 6/25/2007, 8:47:04 AM, mrcrush

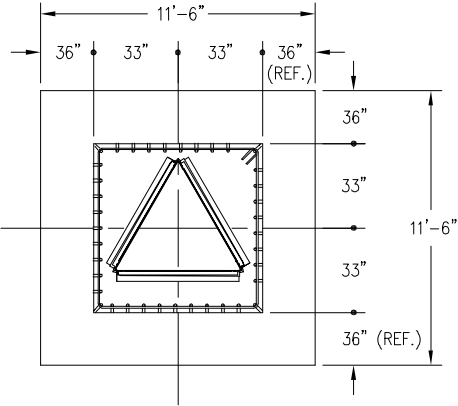
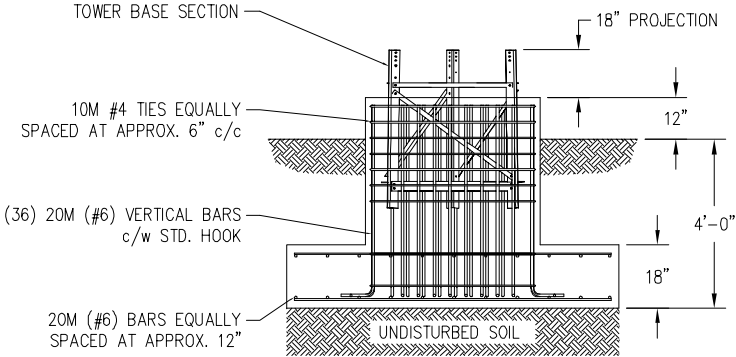
90FT H400 SUPERTITAN TOWER



C A N A D A	MAXIMUM ALLOWABLE ANTENNA AREA – PER CSA-S37-1								
	ROUND ANTENNA MEMBER / FLAT ANTENNA MEMBER								
	CLASS 1 (10mm ICE)			CLASS 1 (25mm ICE)			CLASS 3 (25mm ICE)		
	350Pa	450Pa	550Pa	350Pa	450Pa	550Pa	350Pa	450Pa	550Pa
	38/27	18/13	7/5	35/25	19/13	7/5	65/43	40/26	24/16

FOUNDATION LOADS:
MAX. OVERTURNING MOMENT (K*FT) =
MAX. SHEAR (kips) =
MAX. AXIAL (kips) =

FOUNDATION DESIGN (NORMAL DRY SOIL)
DESIGN ASSUMES THAT FROST DEPTH IS LESS THAN 4'-0"



CUBIC YARDS OF CONCRETE		
PAD CONC VOL.	PIER CONC VOL.	TOTAL VOL.
7.4	3.9	11.3

CONFIDENTIAL: ALL INTELLECTUAL PROPERTY RIGHTS HEREIN ARE THE PROPERTY OF TRYLON MANUFACTURING COMPANY LTD. ALL DUPLICATION, RECORDING, DISCLOSURE OR USE IS PROHIBITED WITHOUT WRITTEN CONSENT OF TRYLON MANUFACTURING COMPANY LTD.

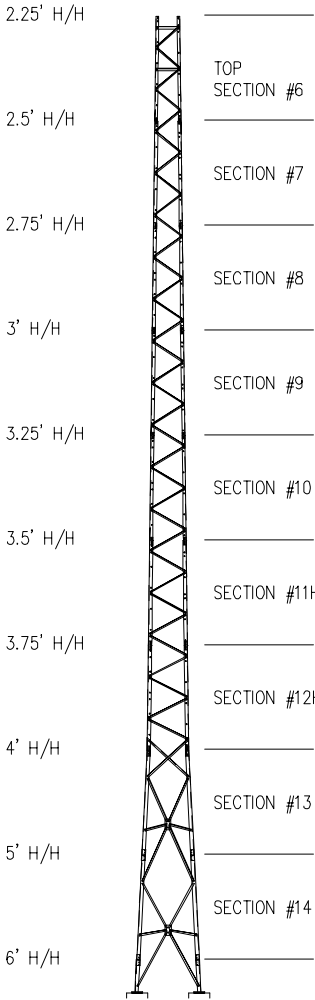


- NOTES: 1) KNOCK-DOWN PART NUMBER: 5.94.H400.090.
2) PRE-ASSEMBLED PART NUMBER: 5.95.H400.090.
3) ANTENNA LOADS ARE CENTRALLY LOCATED AND BALANCED, 3-FT OR LESS ABOVE THE TOWER TOP.
4) WIND LOADING ASSUMES (1) 1/2" TRANSMISSION LINE PER 10 SQ.FT. OF ROUND MEMBER ANTENNA AREA.

REV.	REV. BY:	CHK. BY:	DESCRIPTION	DATE	

CUSTOMER:		SITE:		SCALE: 145,000	
DATE: 17 FEB 07	BY: EP	CHK:	APP:		
TITLE: 90' H400 SUPERTITAN TOWER				DRAWING NO. 000001.620.0334	

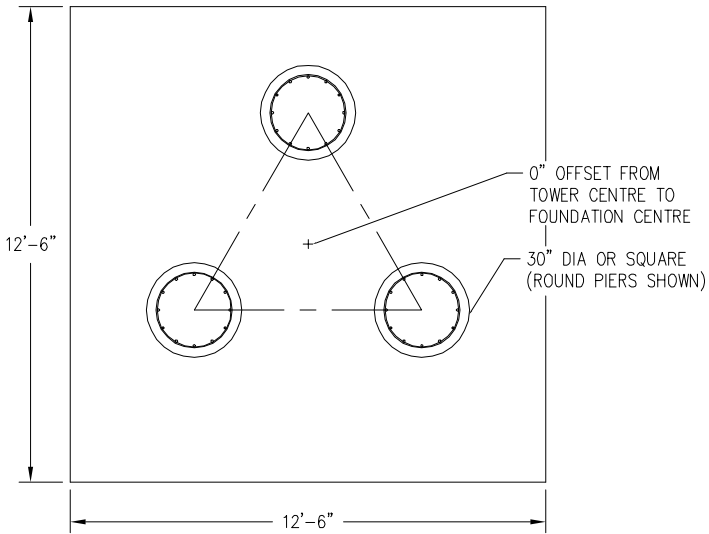
90FT S600 SUPERTITAN TOWER



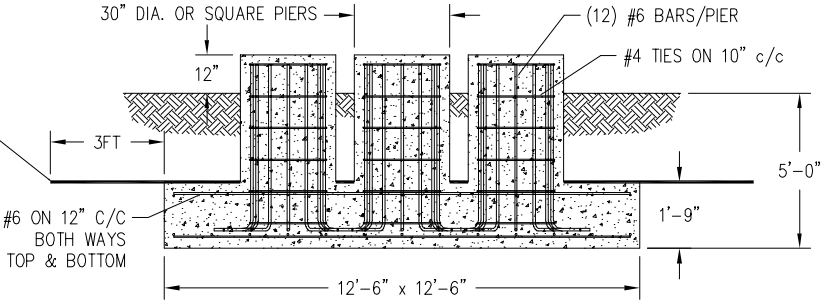
C A N A D A	MAXIMUM ALLOWABLE ANTENNA AREA – PER CSA-S37-1								
	ROUND ANTENNA MEMBER / FLAT ANTENNA MEMBER								
	CLASS 1 (10mm ICE)			CLASS 1 (25mm ICE)			CLASS 3 (25mm ICE)		
	350Pa	450Pa	550Pa	350Pa	450Pa	550Pa	350Pa	450Pa	550Pa
	72/51	43/30	23/16	69/49	42/30	23/16	126/84	89/59	62/41

FOUNDATION LOADS:
MAX. OVERTURNING MOMENT (K*FT) =
MAX. SHEAR (kips) =
MAX. AXIAL (kips) =

FOUNDATION DESIGN (NORMAL DRY SOIL)



INSULATING STYROFOAM REQUIRED WHERE FROST PENETRATION EXCEEDS 6 FEET. PLACE STYROFOAM ON SLAB AND EXTEND 3 FEET BEYOND EDGE. HIGHLOAD 40 INSULATION BY DOW CHEMICALS IS RECOMMENDED.



CUBIC YARDS of CONCRETE				
PAD	RND PIER	SQ PIER	TOTAL RND	TOTAL SQ
10.13	0.77	0.98	12.45	13.08

- NOTES: 1) KNOCK-DOWN PART NUMBER 5.94.S600.090.
2) PRE-ASSEMBLED PART NUMBER:NOT AVAILABLE.
3) ANTENNA LOADS ARE CENTRALLY LOCATED AND BALANCED, 3-FT OR LESS ABOVE THE TOWER TOP.
4) WIND LOADING ASSUMES (1) 1/2" TRANSMISSION LINE PER 10 SQ.FT. OF ROUND MEMBER ANTENNA AREA.

REV.	REV. BY:	CHK. BY:	DESCRIPTION	DATE	

CONFIDENTIAL: ALL INTELLECTUAL PROPERTY RIGHTS HEREIN ARE THE PROPERTY OF TRYLON MANUFACTURING COMPANY LTD. ALL DUPLICATION, RECORDING, DISCLOSURE OR USE IS PROHIBITED WITHOUT WRITTEN CONSENT OF TRYLON MANUFACTURING COMPANY LTD.

TRYLON TSE

CUSTOMER: SITE: SCALE: 145.000

DATE: 17 FEB 07 BY: EP CHK: APP:

TITLE: 90' S600 SUPERTITAN TOWER DRAWING NO. 000001.620.0335

Diagram of a lattice tower structure with height segments and section labels:

- 2.75' H/H
- 3' H/H
- 3.25' H/H
- 3.5' H/H
- 3.75' H/H
- 4' H/H
- 5' H/H
- 6' H/H
- 7' H/H
- 8' H/H

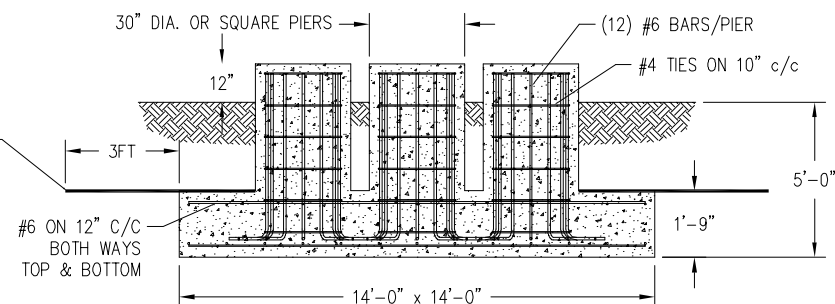
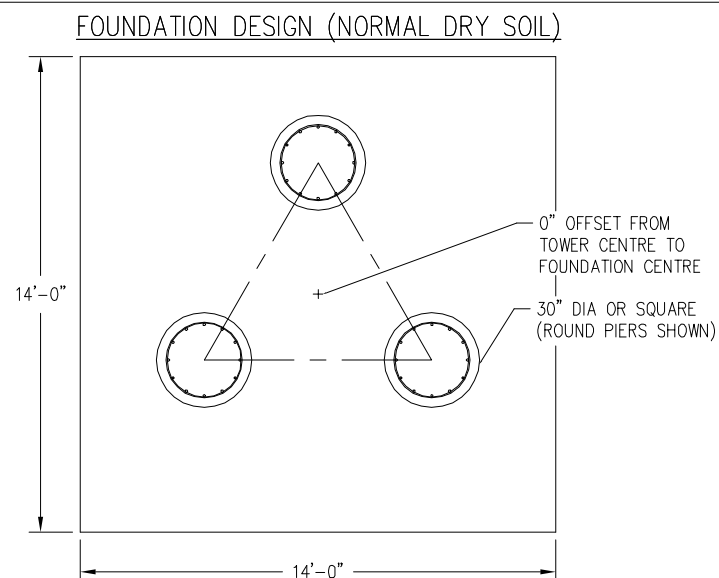
Section labels on the right side of the diagram:

- TOP SECTION #8
- SECTION #9
- SECTION #10
- SECTION #11
- SECTION #12
- SECTION #13
- SECTION #14
- SECTION #15
- SECTION #16

C A N A D A	MAXIMUM ALLOWABLE ANTENNA AREA – PER CSA-S37-1								
	ROUND ANTENNA MEMBER / FLAT ANTENNA MEMBER								
	CLASS 1 (10mm ICE)			CLASS 1 (25mm ICE)			CLASS 3 (25mm ICE)		
	350Pa	450Pa	550Pa	350Pa	450Pa	550Pa	350Pa	450Pa	550Pa
	75/53	53/37	38/27	75/53	53/37	38/27	169/113	118/79	83/55

FOUNDATION LOADS:
MAX. OVERTURNING MOMENT (K*FT) =
MAX. SHEAR (kips) =
MAX. AXIAL (kips) =

INSULATING STYROFOAM REQUIRED
WHERE FROST PENETRATION EXCEEDS
6 FEET. PLACE STYROFOAM ON SLAB
AND EXTEND 3 FEET BEYOND EDGE.
HIGHLOAD 40 INSULATION BY DOW
CHEMICALS IS RECOMMENDED.



CUBIC YARDS of CONCRETE				
PAD	RND PIER	SQ PIER	TOTAL RND	TOTAL SQ
12.70	0.77	0.98	15.02	15.66

CONFIDENTIAL: ALL INTELLECTUAL PROPERTY RIGHTS HEREIN ARE THE PROPERTY OF TRYLON MANUFACTURING COMPANY LTD. ALL DUPLICATION, RECORDING, DISCLOSURE OR USE IS PROHIBITED WITHOUT WRITTEN CONSENT OF TRYLON MANUFACTURING COMPANY LTD.

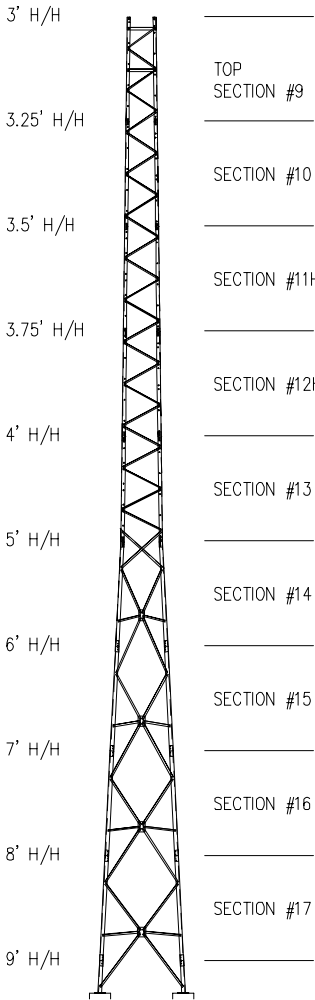


CUSTOMER:		SITE:		SCALE: 145.000	
DATE: 17 FEB 07		BY: EP		CHK: APP:	
TITLE: 90' S800 SUPERTITAN TOWER				DRAWING NO. 000001.620.0336	

NOTES: 1) KNOCK-DOWN PART NUMBER 5.94.S800.090.
2) PRE-ASSEMBLED PART NUMBER: NOT AVAILABLE.
3) ANTENNA LOADS ARE CENTRALLY LOCATED AND BALANCED, 3-FT OR LESS ABOVE THE TOWER TOP.
4) WIND LOADING ASSUMES (1) 1/2" TRANSMISSION LINE PER 10 SQ.FT. OF ROUND MEMBER ANTENNA AREA.

[illegible]

90FT S900 SUPERTITAN TOWER

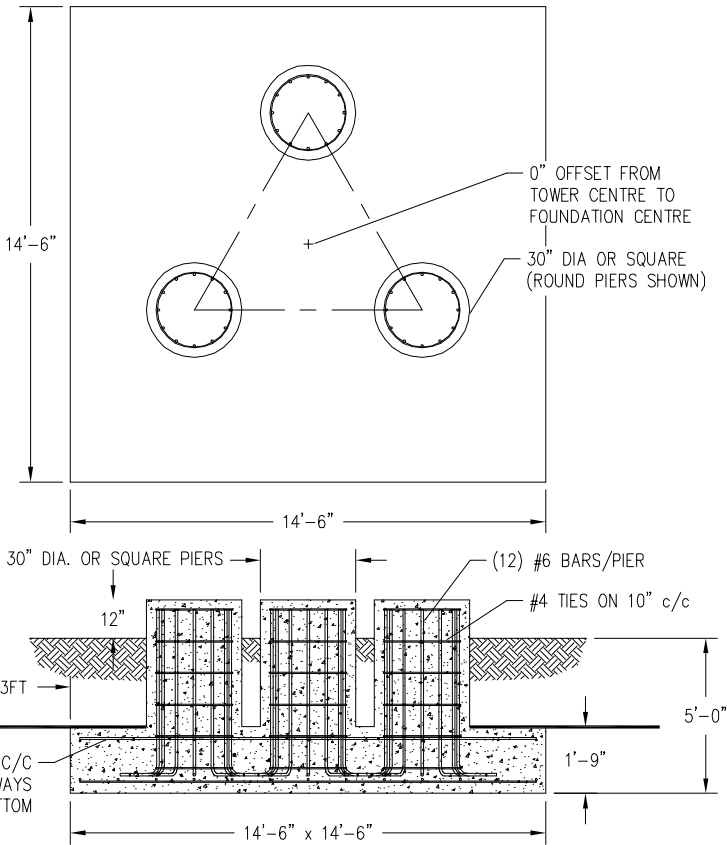


C A N A D A	MAXIMUM ALLOWABLE ANTENNA AREA - PER CSA-S37-1								
	ROUND ANTENNA MEMBER / FLAT ANTENNA MEMBER								
	CLASS 1 (10mm ICE)			CLASS 1 (25mm ICE)			CLASS 3 (25mm ICE)		
	350Pa	450Pa	550Pa	350Pa	450Pa	550Pa	350Pa	450Pa	550Pa
	77/55	55/39	42/30	77/55	55/39	42/30	176/117	128/85	94/63

FOUNDATION LOADS:
MAX. OVERTURNING MOMENT (K*FT) =
MAX. SHEAR (kips) =
MAX. AXIAL (kips) =

INSULATING STYROFOAM REQUIRED
WHERE FROST PENETRATION EXCEEDS
6 FEET. PLACE STYROFOAM ON SLAB
AND EXTEND 3 FEET BEYOND EDGE.
HIGHLOAD 40 INSULATION BY DOW
CHEMICALS IS RECOMMENDED.

FOUNDATION DESIGN (NORMAL DRY SOIL)



CUBIC YARDS of CONCRETE				
PAD	RND PIER	SQ PIER	TOTAL RND	TOTAL SQ
13.63	0.77	0.98	15.95	16.58

NOTES: 1) KNOCK-DOWN PART NUMBER 5.94.S900.090.
2) PRE-ASSEMBLED PART NUMBER: NOT AVAILABLE.
3) ANTENNA LOADS ARE CENTRALLY LOCATED AND BALANCED, 3-FT OR LESS ABOVE THE TOWER TOP.
4) WIND LOADING ASSUMES (1) 1/2" TRANSMISSION LINE PER 10 SQ.FT. OF ROUND MEMBER ANTENNA AREA.

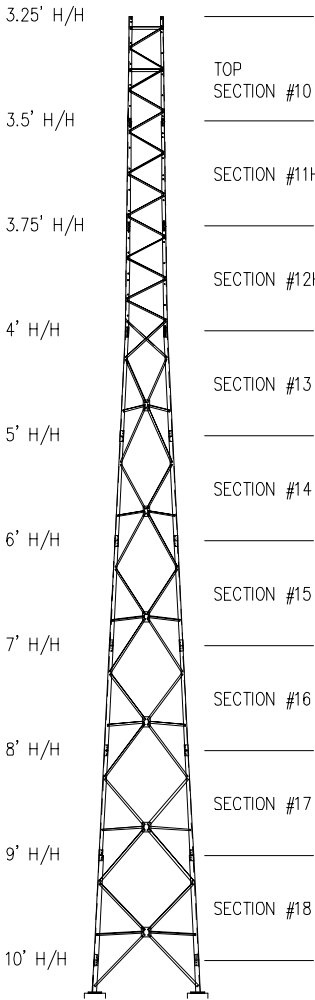
REV.	REV. BY:	CHK. BY:	DESCRIPTION	DATE

CONFIDENTIAL: ALL INTELLECTUAL PROPERTY RIGHTS HEREIN ARE THE PROPERTY OF TRYLON MANUFACTURING COMPANY LTD. ALL DUPLICATION, RECORDING, DISCLOSURE OR USE IS PROHIBITED WITHOUT WRITTEN CONSENT OF TRYLON MANUFACTURING COMPANY LTD.



CUSTOMER:		SITE:		SCALE: 145.000	
DATE: 17 FEB 07	BY: EP	CHK:	APP:		
TITLE: 90' S900 SUPERTITAN TOWER				DRAWING NO. 000001.620.0337	

90FT S1000 SUPERTITAN TOWER

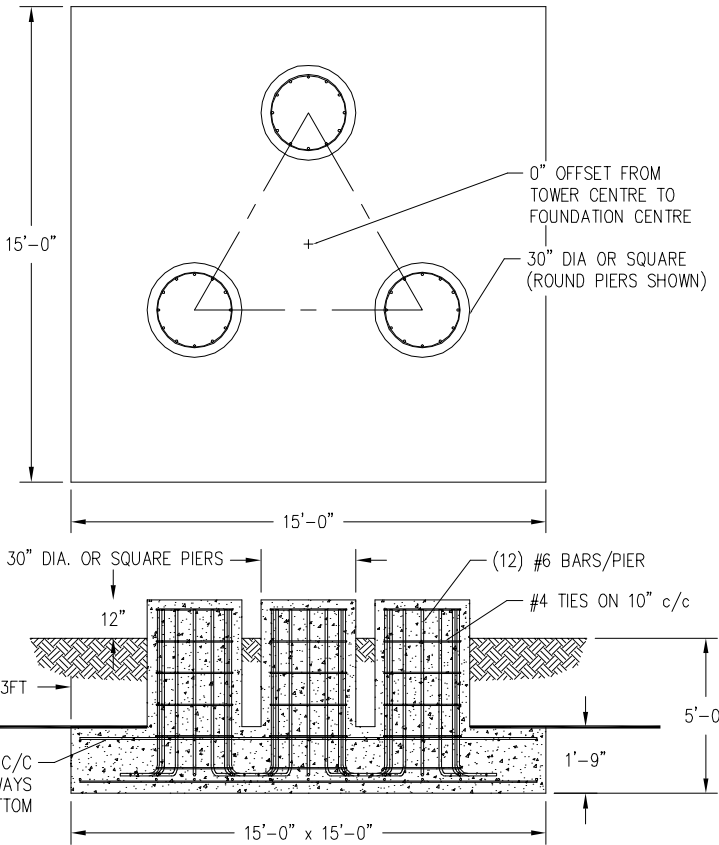


C A N A D A	MAXIMUM ALLOWABLE ANTENNA AREA – PER CSA-S37-1								
	ROUND ANTENNA MEMBER / FLAT ANTENNA MEMBER								
	CLASS 1 (10mm ICE)			CLASS 1 (25mm ICE)			CLASS 3 (25mm ICE)		
	350Pa	450Pa	550Pa	350Pa	450Pa	550Pa	350Pa	450Pa	550Pa
	85/60	63/45	51/36	85/60	63/45	51/36	182/121	133/89	106/71

FOUNDATION LOADS:
MAX. OVERTURNING MOMENT (K*FT) =
MAX. SHEAR (kips) =
MAX. AXIAL (kips) =

INSULATING STYROFOAM REQUIRED
WHERE FROST PENETRATION EXCEEDS
6 FEET. PLACE STYROFOAM ON SLAB
AND EXTEND 3 FEET BEYOND EDGE.
HIGHLOAD 40 INSULATION BY DOW
CHEMICALS IS RECOMMENDED.

FOUNDATION DESIGN (NORMAL DRY SOIL)



CUBIC YARDS of CONCRETE				
PAD	RND PIER	SQ PIER	TOTAL RND	TOTAL SQ
14.58	0.77	0.98	16.90	17.53

NOTES: 1) KNOCK-DOWN PART NUMBER 5.94.S1000.090.
2) PRE-ASSEMBLED PART NUMBER:NOT AVAILABLE.
3) ANTENNA LOADS ARE CENTRALLY LOCATED AND BALANCED, 3-FT OR LESS ABOVE THE TOWER TOP.
4) WIND LOADING ASSUMES (1) 1/2" TRANSMISSION LINE PER 10 SQ.FT. OF ROUND MEMBER ANTENNA AREA.

REV.	REV. BY:	CHK. BY:	DESCRIPTION	DATE

CONFIDENTIAL: ALL INTELLECTUAL PROPERTY RIGHTS HEREIN ARE THE PROPERTY OF TRYLON MANUFACTURING COMPANY LTD. ALL DUPLICATION, RECORDING, DISCLOSURE OR USE IS PROHIBITED WITHOUT WRITTEN CONSENT OF TRYLON MANUFACTURING COMPANY LTD.

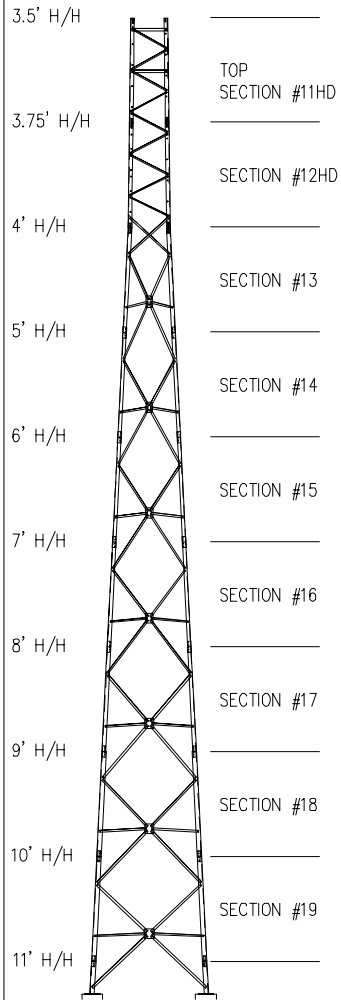
TRYLON TSE

CUSTOMER: SITE: SCALE: 145,000

DATE: 17 FEB 07 BY: EP CHK: APP:

TITLE: 90' S1000 SUPERTITAN TOWER DRAWING NO. 000001.620.0338

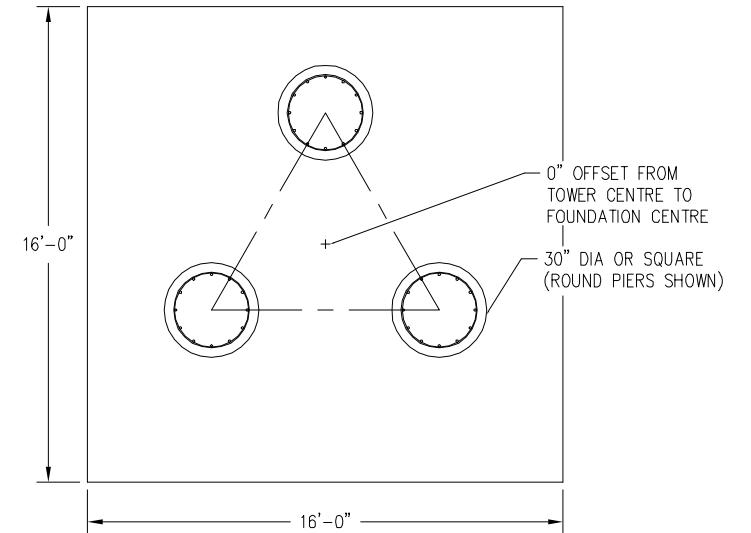
90FT S1100 SUPERTITAN TOWER



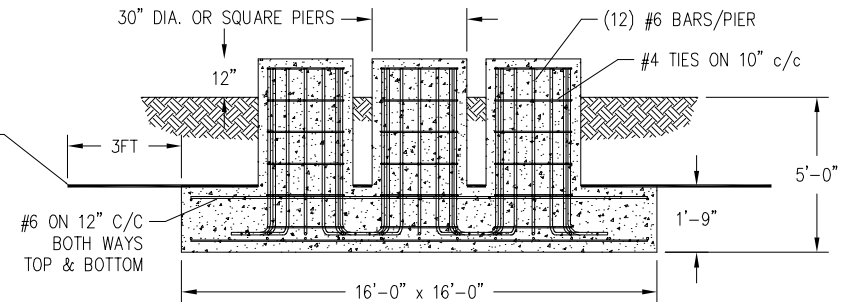
C A N A D A	MAXIMUM ALLOWABLE ANTENNA AREA - PER CSA-S37-1								
	ROUND ANTENNA MEMBER / FLAT ANTENNA MEMBER								
	CLASS 1 (10mm ICE)			CLASS 1 (25mm ICE)			CLASS 3 (25mm ICE)		
	350Pa	450Pa	550Pa	350Pa	450Pa	550Pa	350Pa	450Pa	550Pa
	141/100	100/71	75/53	141/100	100/71	75/53	360/240	260/173	198/132

FOUNDATION LOADS:
MAX. OVERTURNING MOMENT (K*FT) =
MAX. SHEAR (kips) =
MAX. AXIAL (kips) =

FOUNDATION DESIGN (NORMAL DRY SOIL)



INSULATING STYROFOAM REQUIRED WHERE FROST PENETRATION EXCEEDS 6 FEET. PLACE STYROFOAM ON SLAB AND EXTEND 3 FEET BEYOND EDGE. HIGHLOAD 40 INSULATION BY DOW CHEMICALS IS RECOMMENDED.



CUBIC YARDS of CONCRETE				
PAD	RND PIER	SQ PIER	TOTAL RND	TOTAL SQ
16.59	0.77	0.98	18.91	19.54

- NOTES: 1) KNOCK-DOWN PART NUMBER 5.94.S110.090.
2) PRE-ASSEMBLED PART NUMBER: NOT AVAILABLE.
3) ANTENNA LOADS ARE CENTRALLY LOCATED AND BALANCED, 3-FT OR LESS ABOVE THE TOWER TOP.
4) WIND LOADING ASSUMES (1) 1/2" TRANSMISSION LINE PER 10 SQ.FT. OF ROUND MEMBER ANTENNA AREA.

REV.	REV. BY:	CHK. BY:	DESCRIPTION	DATE

CONFIDENTIAL: ALL INTELLECTUAL PROPERTY RIGHTS HEREIN ARE THE PROPERTY OF TRYLON MANUFACTURING COMPANY LTD. ALL DUPLICATION, RECORDING, DISCLOSURE OR USE IS PROHIBITED WITHOUT WRITTEN CONSENT OF TRYLON MANUFACTURING COMPANY LTD.



CUSTOMER:		SITE:		SCALE: 145.000	
DATE: 17 FEB 07	BY: EP	CHK:	APP:		
TITLE: 90' S1100 SUPERTITAN TOWER				DRAWING NO. 000001.620.0339	