

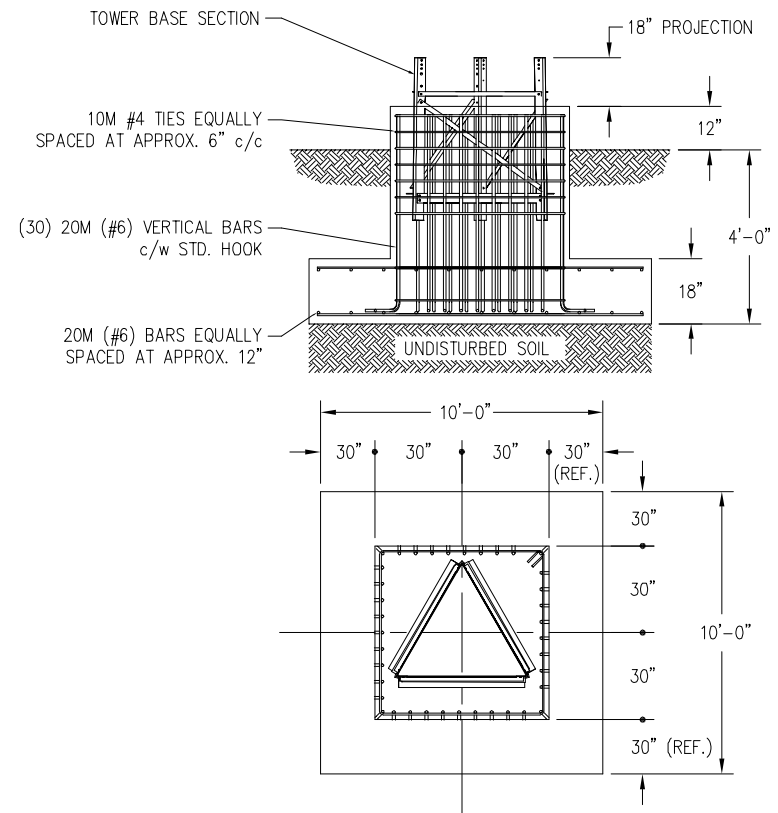
12" H/H		TOP SECTION #1
15" H/H		SECTION #2
18" H/H		SECTION #3
21" H/H		SECTION #4
24" H/H		SECTION #5
27" H/H		SECTION #6
30" H/H		SECTION #7
33" H/H		SECTION #8
36" H/H		SECTION #9
39" H/H		SECTION #10
42" H/H		

SECTION #1

C A N A D A	MAXIMUM ALLOWABLE ANTENNA AREA – PER CSA–S37–01								
	ROUND ANTENNA MEMBER / FLAT ANTENNA MEMBER								
	CLASS 1 (10mm ICE)			CLASS 1 (25mm ICE)			CLASS 3 (25mm ICE)		
	350Pa	450Pa	550Pa	350Pa	450Pa	550Pa	350Pa	450Pa	550Pa
	--/--	--/--	--/--	--/--	--/--	--/--	19/13	1/5	--/--

– 5' EMBEDMENT SECTION INCLUDED IN KITS

DESIGN ASSUMES THAT FROST DEPTH IS LESS THAN 4'-0"




CUBIC YARDS OF CONCRETE		
PAD CONC VOL.	PIER CONC VOL.	TOTAL VOL.
5.6	3.2	8.8

CONFIDENTIAL: ALL INTELLECTUAL PROPERTY RIGHTS HEREIN ARE THE PROPERTY OF TRYLON MANUFACTURING COMPANY LTD. ALL DUPLICATION, RECORDING, DISCLOSURE OR USE IS PROHIBITED WITHOUT WRITTEN CONSENT OF TRYLON MANUFACTURING COMPANY LTD.



CUSTOMER:		SITE:		SCALE: 155.000	
DATE: 16 FEB 07		BY: MRH		CHK: APP:	
TITLE: 100FT S100 SUPERTITAN TOWER				DRAWING NO. 000001.620.0340	

NOTES: 1) KNOCK-DOWN PART NUMBER 5.94.S100.100.
2) PRE-ASSEMBLED PART NUMBER: 5.95.S100.100.
3) ANTENNA LOADS ARE CENTRALLY LOCATED AND BALANCED, 3-FT OR LESS ABOVE THE TOWER TOP.
4) WIND LOADING ASSUMES (1) 1/2" TRANSMISSION LINE PER 10 SQ.FT. OF ROUND MEMBER ANTENNA AREA.

					<div> TRYLON TSF</div>			
					CUSTOMER:	SITE:	SCALE:	155,000
					DATE:	BY:	CHK:	APP:
					16 FEB 07	MRH		
					TITLE:	DRAWING NO.		
					100FT S100 SUPERTITAN TOWER			000001.620.0340
REV.	REV. BY.	CHK. BY.	DESCRIPTION	DATE				

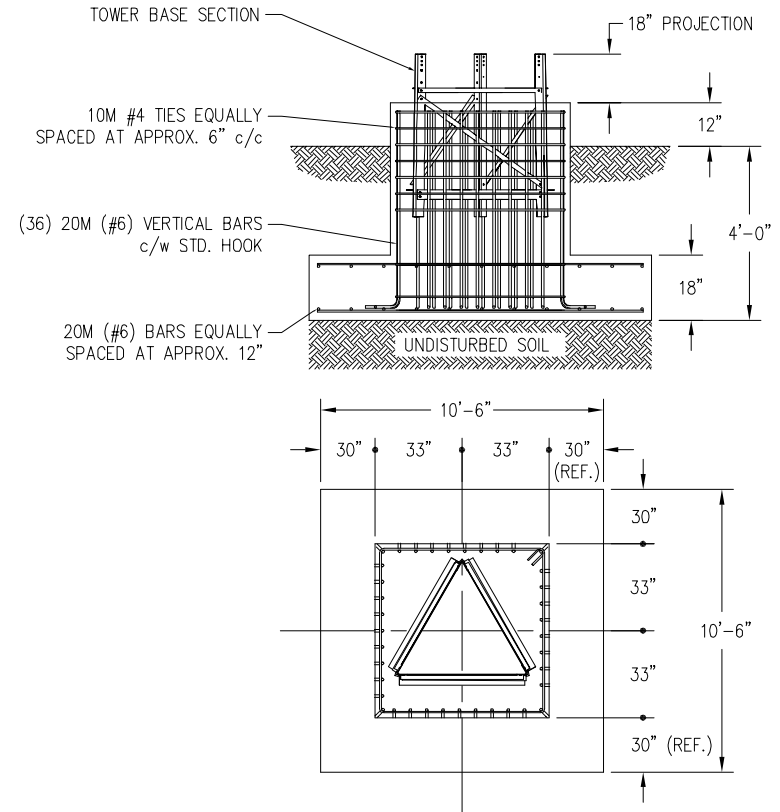
15" H/H		TOP SECTION #2
18" H/H		SECTION #3
21" H/H		SECTION #4
24" H/H		SECTION #5
27" H/H		SECTION #6
30" H/H		SECTION #7
33" H/H		SECTION #8
36" H/H		SECTION #9
39" H/H		SECTION #10
42" H/H		SECTION #11
45" H/H		

SECTION #11

C A N A D A	MAXIMUM ALLOWABLE ANTENNA AREA – PER CSA–S37–01								
	ROUND ANTENNA MEMBER / FLAT ANTENNA MEMBER								
	CLASS 1 (10mm ICE)			CLASS 1 (25mm ICE)			CLASS 3 (25mm ICE)		
	350Pa	450Pa	550Pa	350Pa	450Pa	550Pa	350Pa	450Pa	550Pa
	3/2	--/--	--/--	3/2	--/--	--/--	24/16	5/3	--/--

— 5' EMBEDMENT SECTION
INCLUDED IN KITS

DESIGN ASSUMES THAT FROST DEPTH IS LESS THAN 4'-0"



CUBIC YARDS OF CONCRETE		
PAD CONC VOL.	PIER CONC VOL.	TOTAL VOL.
6.1	3.9	10.0

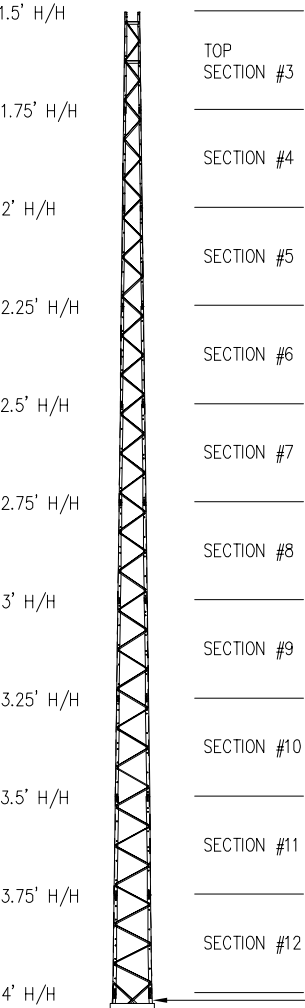


TRYLON TSF

CUSTOMER:		SITE:		SCALE: 155.000	
DATE: 16 FEB 07		BY: MRH		CHK: APP:	
TITLE: 100FT S200 SUPERTITAN TOWER				DRAWING NO. 000001.620.0341	

REV.	REV. BY:	CHK. BY:	DESCRIPTION		DATE

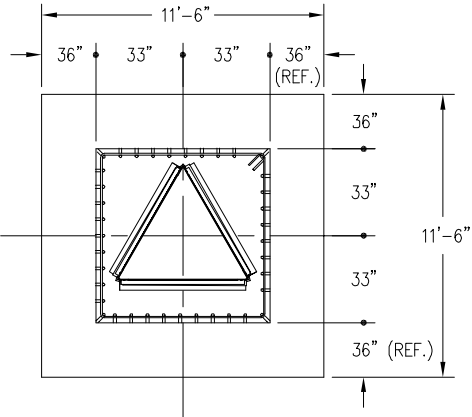
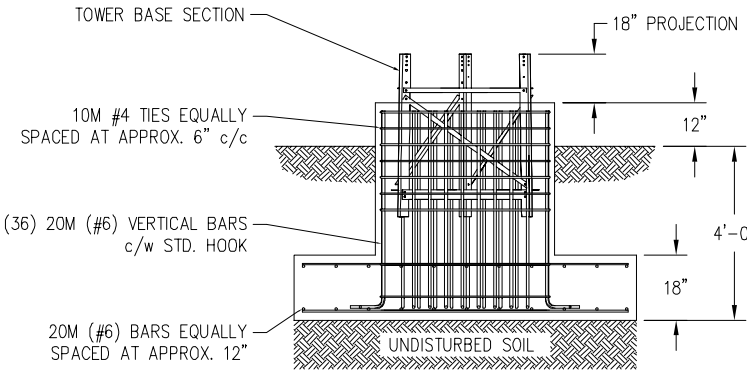
100FT S300 SUPERTITAN TOWER



C A N A D A	MAXIMUM ALLOWABLE ANTENNA AREA - PER CSA-S37-01								
	ROUND ANTENNA MEMBER / FLAT ANTENNA MEMBER								
	CLASS 1 (10mm ICE)			CLASS 1 (25mm ICE)			CLASS 3 (25mm ICE)		
	350Pa	450Pa	550Pa	350Pa	450Pa	550Pa	350Pa	450Pa	550Pa
	3/2	--/--	--/--	3/2	--/--	--/--	24/16	4/3	--/--

FOUNDATION LOADS:
MAX. OVERTURNING MOMENT (K*FT) =
MAX. SHEAR (kips) =
MAX. AXIAL (kips) =

FOUNDATION DESIGN (NORMAL DRY SOIL)
DESIGN ASSUMES THAT FROST DEPTH IS LESS THAN 4'-0"




CUBIC YARDS OF CONCRETE		
PAD CONC VOL.	PIER CONC VOL.	TOTAL VOL.
7.4	3.9	11.3

NOTES: 1) KNOCK-DOWN PART NUMBER 5.94.S300.100.
2) PRE-ASSEMBLED PART NUMBER: 5.95.S300.100.
3) ANTENNA LOADS ARE CENTRALLY LOCATED AND BALANCED, 3-FT OR LESS ABOVE THE TOWER TOP.
4) WIND LOADING ASSUMES (1) 1/2" TRANSMISSION LINE PER 10 SQ.FT. OF ROUND MEMBER ANTENNA AREA.

REV.	REV. BY:	CHK. BY:	DESCRIPTION	DATE

CONFIDENTIAL: ALL INTELLECTUAL PROPERTY RIGHTS HEREIN ARE THE PROPERTY OF TRYLON MANUFACTURING COMPANY LTD. ALL DUPLICATION, RECORDING, DISCLOSURE OR USE IS PROHIBITED WITHOUT WRITTEN CONSENT OF TRYLON MANUFACTURING COMPANY LTD.



TRYLON Tsf

CUSTOMER:	SITE:	SCALE:
DATE: 16 FEB 07	BY: MRH	CHK: APP:
TITLE: 100FT S300 SUPERTITAN TOWER		DRAWING NO. 000001.620.0342

Diagram illustrating the vertical structure of a tower, showing sections and heights:

- 1.5' H/H
- 1.75' H/H
- 2' H/H
- 2.25' H/H
- 2.5' H/H
- 2.75' H/H
- 3' H/H
- 3.25' H/H
- 3.5' H/H
- 3.75' H/H
- 4' H/H

Sections are labeled on the right side of the diagram:

- TOP SECTION #3
- SECTION #4
- SECTION #5
- SECTION #6
- SECTION #7
- SECTION #8
- SECTION #9
- SECTION #10
- SECTION #11
- SECTION #12

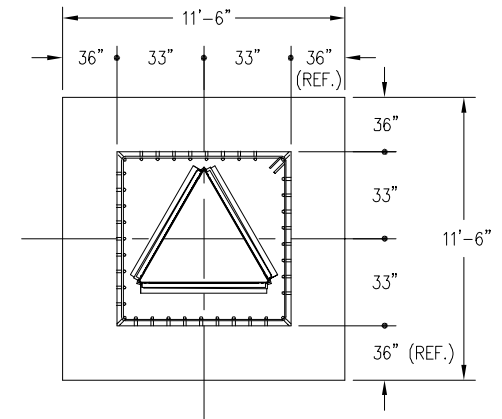
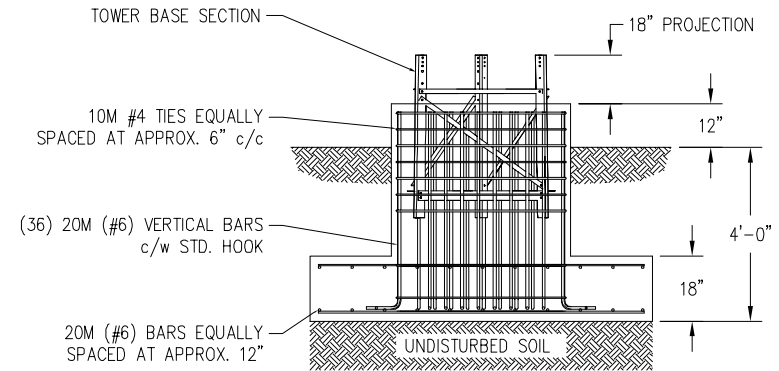
SECTION #12HD

C A N A D A	MAXIMUM ALLOWABLE ANTENNA AREA – PER CSA–S37–01								
	ROUND ANTENNA MEMBER / FLAT ANTENNA MEMBER								
	CLASS 1 (10mm ICE)			CLASS 1 (25mm ICE)			CLASS 3 (25mm ICE)		
	350Pa	450Pa	550Pa	350Pa	450Pa	550Pa	350Pa	450Pa	550Pa
	20/14	5/3	--/--	20/14	5/3	--/--	44/29	22/14	9/6

FOUNDATION LOADS:
MAX. OVERTURNING MOMENT (K*FT) =
MAX. SHEAR (kips) =
MAX. AXIAL (kips) =

— 5' EMBEDMENT SECTION
INCLUDED IN KITS

DESIGN ASSUMES THAT FROST DEPTH IS LESS THAN 4'-0"




CUBIC YARDS OF CONCRETE		
PAD CONC VOL.	PIER CONC VOL.	TOTAL VOL.
7.4	3.9	11.3

CONFIDENTIAL: ALL INTELLECTUAL PROPERTY RIGHTS HEREIN ARE THE PROPERTY OF TRYLON MANUFACTURING COMPANY LTD. ALL DUPLICATION, RECORDING, DISCLOSURE OR USE IS PROHIBITED WITHOUT WRITTEN CONSENT OF TRYLON MANUFACTURING COMPANY LTD.



CUSTOMER:		SITE:		SCALE: 155.000	
DATE: 16 FEB 07		BY: MRH		CHK: APP:	
TITLE: 100FT H300 SUPERTITAN TOWER				DRAWING NO. 000001.620.0343	

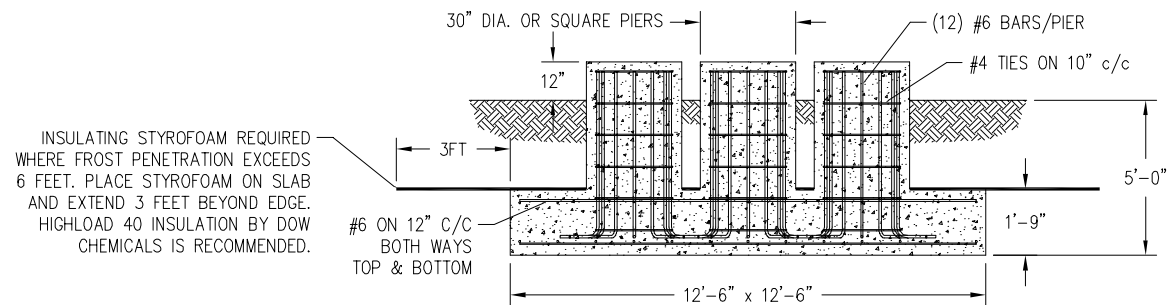
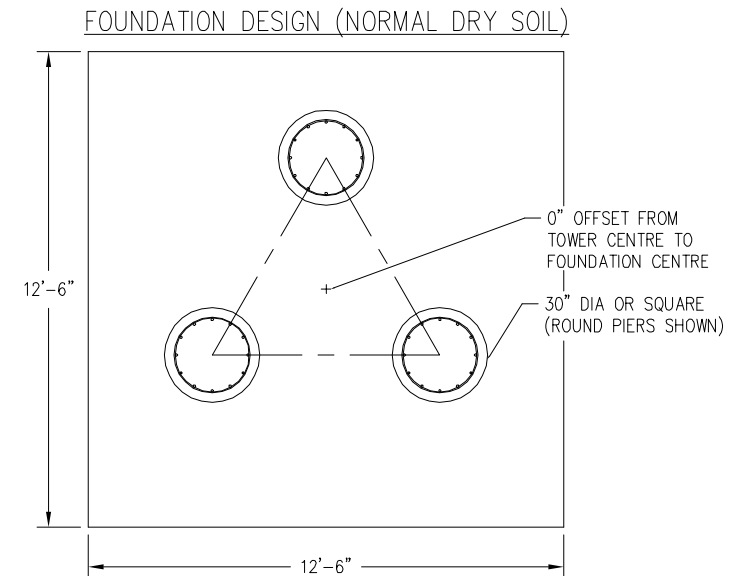
NOTES: 1) KNOCK-DOWN PART NUMBER: 5.94.H300.100.
2) PRE-ASSEMBLED PART NUMBER: 5.95.H300.100.
3) ANTENNA LOADS ARE CENTRALLY LOCATED AND BALANCED, 3-FT OR LESS ABOVE THE TOWER TOP.
4) WIND LOADING ASSUMES (1) 1/2" TRANSMISSION LINE PER 10 SQ.FT. OF ROUND MEMBER ANTENNA AREA.

					<div> TRYLON Tsf</div>			
					CUSTOMER:	SITE:	SCALE:	155,000
					DATE:	BY:	CHK:	APP:
					16 FEB 07	MRH		
					TITLE:	DRAWING NO.		
					100FT H300 SUPERTITAN TOWER			000001.620.0343
REV.	REV. BY:	CHK. BY:	DESCRIPTION	DATE				

2' H/H	TOP SECTION #5
2.25' H/H	SECTION #6
2.5' H/H	SECTION #7
2.75' H/H	SECTION #8
3' H/H	SECTION #9
3.25' H/H	SECTION #10
3.5' H/H	SECTION #11
3.75' H/H	SECTION #12
4' H/H	SECTION #13
5' H/H	SECTION #14
6' H/H	

C A N A D A	MAXIMUM ALLOWABLE ANTENNA AREA – PER CSA–S37–01								
	ROUND ANTENNA MEMBER / FLAT ANTENNA MEMBER								
	CLASS 1 (10mm ICE)			CLASS 1 (25mm ICE)			CLASS 3 (25mm ICE)		
	350Pa	450Pa	550Pa	350Pa	450Pa	550Pa	350Pa	450Pa	550Pa
	55/39	30/21	13/9	50/35	30/21	13/9	89/59	59/39	38/25

FOUNDATION LOADS:
 MAX. OVERTURNING MOMENT (K*FT) =
 MAX. SHEAR (kips) =
 MAX. AXIAL (kips) =




CUBIC YARDS of CONCRETE				
PAD	RND PIER	SQ PIER	TOTAL RND	TOTAL SQ
10.13	0.77	0.98	12.45	13.08

CONFIDENTIAL: ALL INTELLECTUAL PROPERTY RIGHTS HEREIN ARE THE PROPERTY OF TRYLON MANUFACTURING COMPANY LTD. ALL DUPLICATION, RECORDING, DISCLOSURE OR USE IS PROHIBITED WITHOUT WRITTEN CONSENT OF TRYLON MANUFACTURING COMPANY LTD.

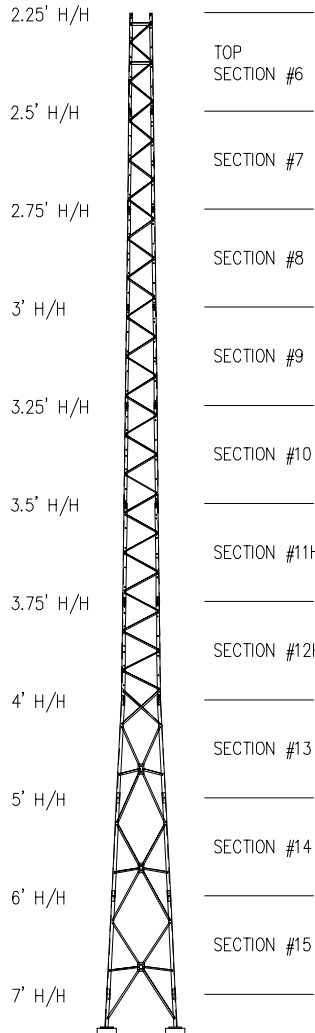


CUSTOMER:		SITE:		SCALE: 155.000	
DATE: 16 FEB 07		BY: MRH	CHK:		APP:
TITLE: 100FT S500 SUPERTITAN TOWER				DRAWING NO. 000001.620.0344	

- NOTES: 1) KNOCK-DOWN PART NUMBER 5.94.S500.100.
2) PRE-ASSEMBLED PART NUMBER: 5.95.S500.100.
3) ANTENNA LOADS ARE CENTRALLY LOCATED AND BALANCED, 3-FT OR LESS ABOVE THE TOWER TOP.
4) WIND LOADING ASSUMES (1) 1/2" TRANSMISSION LINE PER 10 SQ.FT. OF ROUND MEMBER ANTENNA AREA.

					<div></div>			
					CUSTOMER:	SITE:	SCALE:	155.000
					DATE:	BY:	CHK:	APP:
					16 FEB 07	MRH		
					TITLE:			DRAWING NO.
					100FT S500 SUPERTITAN TOWER			000001.620.0344
REV.	REV. BY:	CHK. BY:	DESCRIPTION	DATE				

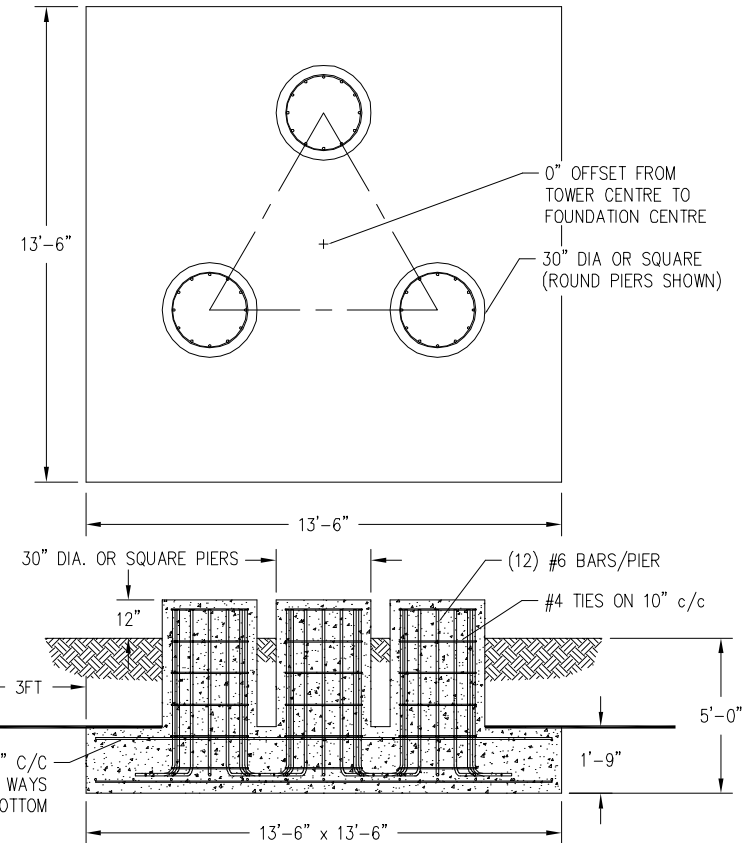
100FT S600 SUPERTITAN TOWER



C A N N A D A	MAXIMUM ALLOWABLE ANTENNA AREA - PER CSA-S37-01								
	ROUND ANTENNA MEMBER / FLAT ANTENNA MEMBER								
	CLASS 1 (10mm ICE)			CLASS 1 (25mm ICE)			CLASS 3 (25mm ICE)		
	350Pa	450Pa	550Pa	350Pa	450Pa	550Pa	350Pa	450Pa	550Pa
	70/50	40/28	21/15	61/41	39/27	21/15	122/81	84/56	61/41

FOUNDATION LOADS:
MAX. OVERTURNING MOMENT (K*FT) =
MAX. SHEAR (kips) =
MAX. AXIAL (kips) =

FOUNDATION DESIGN (NORMAL DRY SOIL)



CUBIC YARDS of CONCRETE				
PAD	RND PIER	SQ PIER	TOTAL RND	TOTAL SQ
11.81	0.77	0.98	14.13	14.76

- NOTES: 1) KNOCK-DOWN PART NUMBER 5.94.S600.100.
2) PRE-ASSEMBLED PART NUMBER: NOT AVAILABLE.
3) ANTENNA LOADS ARE CENTRALLY LOCATED AND BALANCED, 3-FT OR LESS ABOVE THE TOWER TOP.
4) WIND LOADING ASSUMES (1) 1/2" TRANSMISSION LINE PER 10 SQ.FT. OF ROUND MEMBER ANTENNA AREA.

REV.	REV. BY:	CHK. BY:	DESCRIPTION	DATE

CONFIDENTIAL: ALL INTELLECTUAL PROPERTY RIGHTS HEREIN ARE THE PROPERTY OF TRYLON MANUFACTURING COMPANY LTD. ALL DUPLICATION, RECORDING, DISCLOSURE OR USE IS PROHIBITED WITHOUT WRITTEN CONSENT OF TRYLON MANUFACTURING COMPANY LTD.

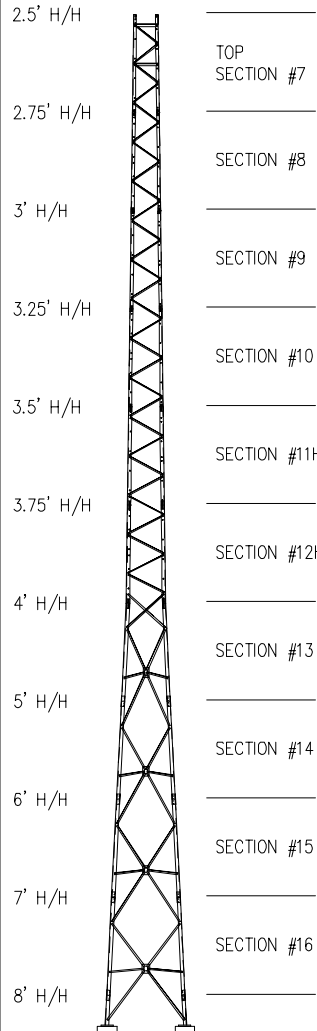
TRYLON TSE

CUSTOMER: SITE: SCALE: 155,000

DATE: 16 FEB 07 BY: MRH CHK: APP:

TITLE: 100FT S600 SUPERTITAN TOWER DRAWING NO. 000001.620.0345

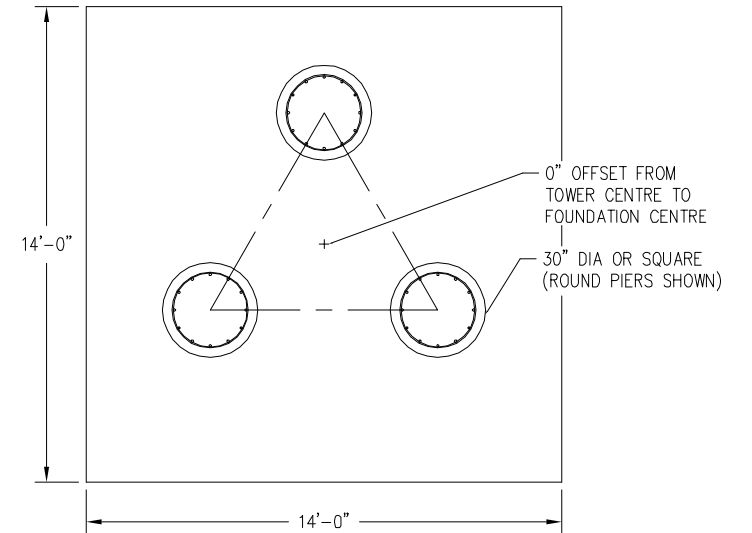
100FT S700 SUPERTITAN TOWER



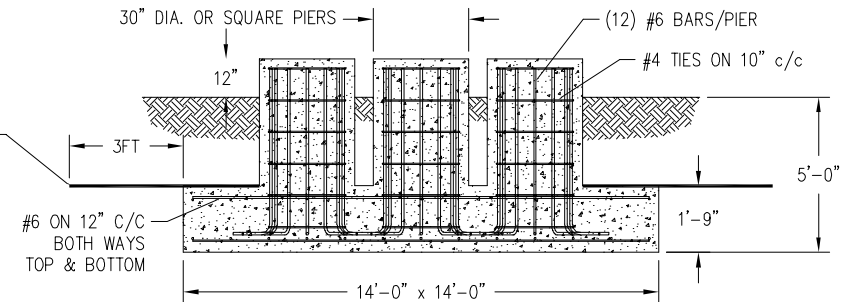
C A N N A D A	MAXIMUM ALLOWABLE ANTENNA AREA - PER CSA-S37-01								
	ROUND ANTENNA MEMBER / FLAT ANTENNA MEMBER								
	CLASS 1 (10mm ICE)			CLASS 1 (25mm ICE)			CLASS 3 (25mm ICE)		
	350Pa	450Pa	550Pa	350Pa	450Pa	550Pa	350Pa	450Pa	550Pa
	68/48	42/30	25/17	67/47	41/29	25/17	160/107	104/69	72/48

FOUNDATION LOADS:
 MAX. OVERTURNING MOMENT (K*FT) =
 MAX. SHEAR (kips) =
 MAX. AXIAL (kips) =

FOUNDATION DESIGN (NORMAL DRY SOIL)



INSULATING STYROFOAM REQUIRED WHERE FROST PENETRATION EXCEEDS 6 FEET. PLACE STYROFOAM ON SLAB AND EXTEND 3 FEET BEYOND EDGE. HIGHLOAD 40 INSULATION BY DOW CHEMICALS IS RECOMMENDED.



CUBIC YARDS of CONCRETE				
PAD	RND PIER	SQ PIER	TOTAL RND	TOTAL SQ
12.70	0.77	0.98	15.02	15.66

- NOTES: 1) KNOCK-DOWN PART NUMBER 5.94.S700.100.
 2) PRE-ASSEMBLED PART NUMBER: NOT AVAILABLE.
 3) ANTENNA LOADS ARE CENTRALLY LOCATED AND BALANCED, 3-FT OR LESS ABOVE THE TOWER TOP.
 4) WIND LOADING ASSUMES (1) 1/2" TRANSMISSION LINE PER 10 SQ.FT. OF ROUND MEMBER ANTENNA AREA.

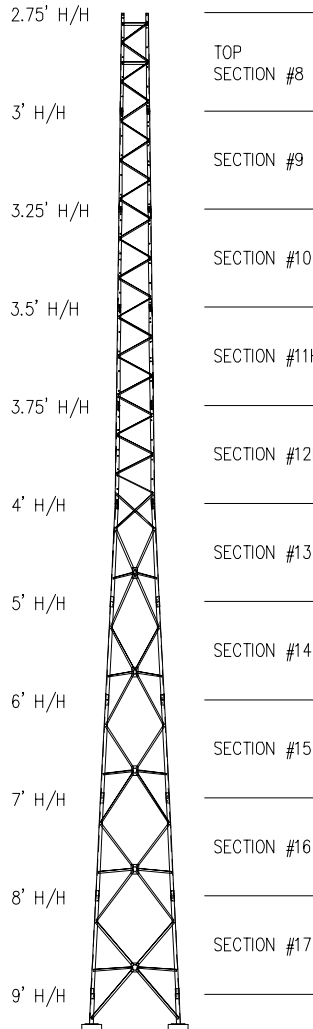
REV.	REV. BY:	CHK. BY:	DESCRIPTION	DATE			

CONFIDENTIAL: ALL INTELLECTUAL PROPERTY RIGHTS HEREIN ARE THE PROPERTY OF TRYLON MANUFACTURING COMPANY LTD. ALL DUPLICATION, RECORDING, DISCLOSURE OR USE IS PROHIBITED WITHOUT WRITTEN CONSENT OF TRYLON MANUFACTURING COMPANY LTD.



CUSTOMER:		SITE:		SCALE: 155.000	
DATE: 16 FEB 07	BY: MRH	CHK:	APP:		
TITLE: 100FT S700 SUPERTITAN TOWER				DRAWING NO. 000001.620.0346	

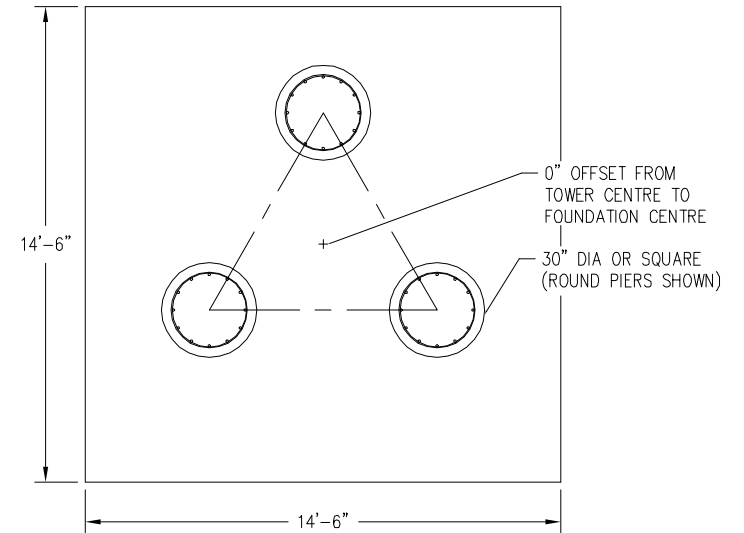
100FT S800 SUPERTITAN TOWER



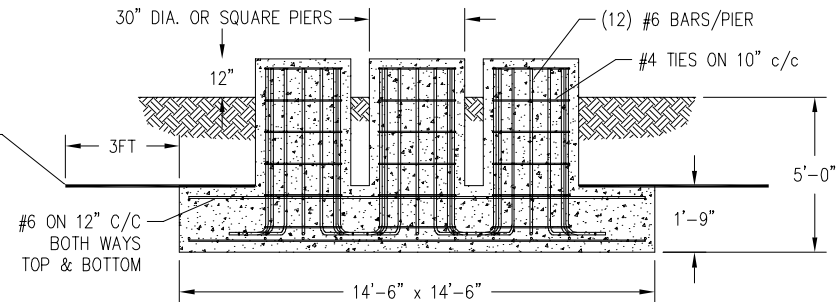
C A N N A D A	MAXIMUM ALLOWABLE ANTENNA AREA - PER CSA-S37-01								
	ROUND ANTENNA MEMBER / FLAT ANTENNA MEMBER								
	CLASS 1 (10mm ICE)			CLASS 1 (25mm ICE)			CLASS 3 (25mm ICE)		
	350Pa	450Pa	550Pa	350Pa	450Pa	550Pa	350Pa	450Pa	550Pa
	93/52	50/13	37/26	73/52	50/35	37/26	163/109	114/76	80/53

FOUNDATION LOADS:
MAX. OVERTURNING MOMENT (K*FT) =
MAX. SHEAR (kips) =
MAX. AXIAL (kips) =

FOUNDATION DESIGN (NORMAL DRY SOIL)




INSULATING STYROFOAM REQUIRED WHERE FROST PENETRATION EXCEEDS 6 FEET. PLACE STYROFOAM ON SLAB AND EXTEND 3 FEET BEYOND EDGE. HIGHLOAD 40 INSULATION BY DOW CHEMICALS IS RECOMMENDED.

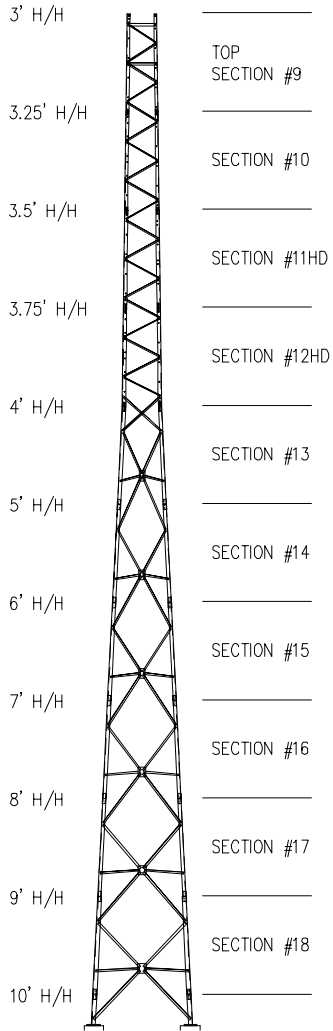


CUBIC YARDS of CONCRETE				
PAD	RND PIER	SQ PIER	TOTAL RND	TOTAL SQ
13.63	0.77	0.98	15.95	16.58

- NOTES: 1) KNOCK-DOWN PART NUMBER 5.94.S800.100.
2) PRE-ASSEMBLED PART NUMBER: NOT AVAILABLE.
3) ANTENNA LOADS ARE CENTRALLY LOCATED AND BALANCED, 3-FT OR LESS ABOVE THE TOWER TOP.
4) WIND LOADING ASSUMES (1) 1/2" TRANSMISSION LINE PER 10 SQ.FT. OF ROUND MEMBER ANTENNA AREA.

										TRYLON Tsf			
						CUSTOMER:		SITE:		SCALE:		155,000	
						DATE: 16 FEB 07		BY: MRH		CHK:		APP:	
						TITLE:				DRAWING NO.			
						100FT S800 SUPERTITAN TOWER				000001.620.0347			
REV.	REV. BY:	CHK. BY:	DESCRIPTION			DATE							

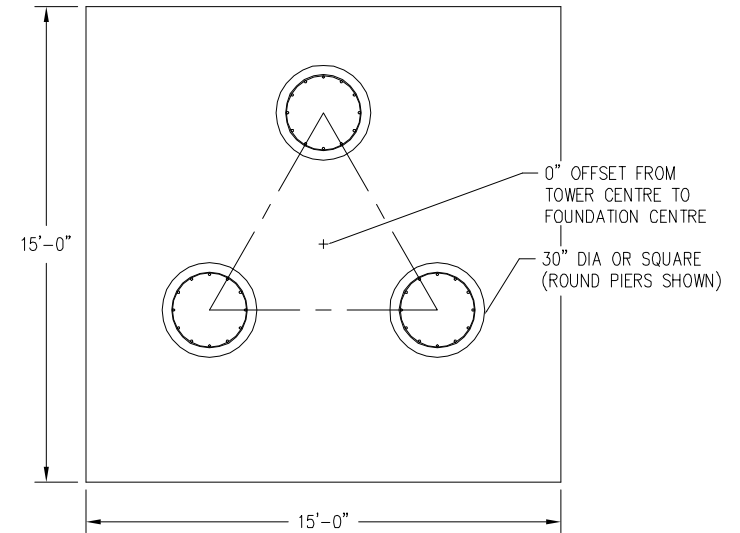
100FT S900 SUPERTITAN TOWER



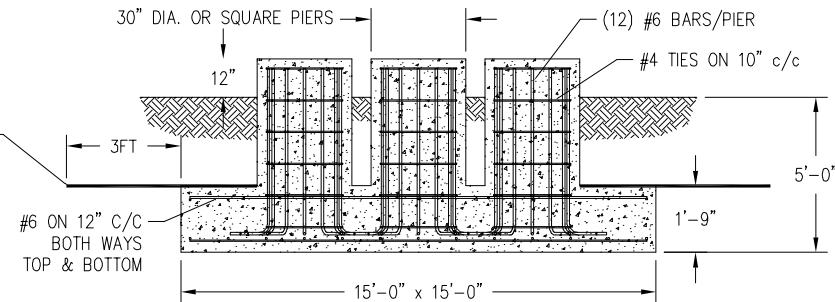
C A N N A D A	MAXIMUM ALLOWABLE ANTENNA AREA - PER CSA-S37-01								
	ROUND ANTENNA MEMBER / FLAT ANTENNA MEMBER								
	CLASS 1 (10mm ICE)			CLASS 1 (25mm ICE)			CLASS 3 (25mm ICE)		
	350Pa	450Pa	550Pa	350Pa	450Pa	550Pa	350Pa	450Pa	550Pa
	75/59	53/45	40/35	83/59	63/45	50/35	171/114	122/81	92/61

FOUNDATION LOADS:
MAX. OVERTURNING MOMENT (K*FT) =
MAX. SHEAR (kips) =
MAX. AXIAL (kips) =

FOUNDATION DESIGN (NORMAL DRY SOIL)



INSULATING STYROFOAM REQUIRED WHERE FROST PENETRATION EXCEEDS 6 FEET. PLACE STYROFOAM ON SLAB AND EXTEND 3 FEET BEYOND EDGE. HIGHLOAD 40 INSULATION BY DOW CHEMICALS IS RECOMMENDED.



CUBIC YARDS of CONCRETE				
PAD	RND PIER	SQ PIER	TOTAL RND	TOTAL SQ
14.58	0.77	0.98	16.90	17.53

- NOTES: 1) KNOCK-DOWN PART NUMBER 5.94.S900.100.
2) PRE-ASSEMBLED PART NUMBER: NOT AVAILABLE.
3) ANTENNA LOADS ARE CENTRALLY LOCATED AND BALANCED, 3-FT OR LESS ABOVE THE TOWER TOP.
4) WIND LOADING ASSUMES (1) 1/2" TRANSMISSION LINE PER 10 SQ.FT. OF ROUND MEMBER ANTENNA AREA.

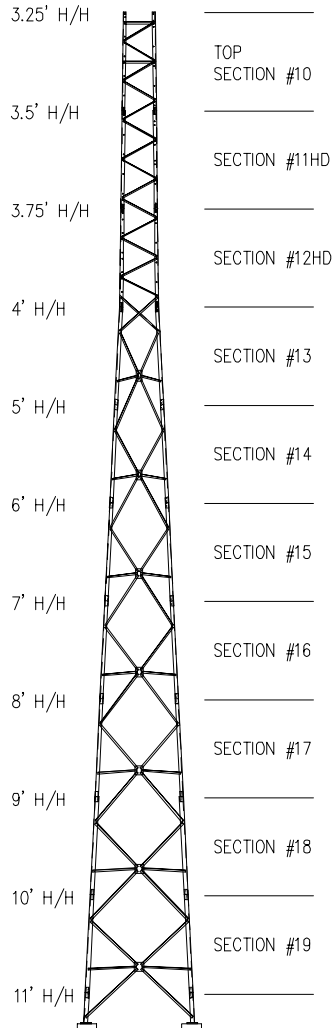
REV.	REV. BY:	CHK. BY:	DESCRIPTION	DATE

CONFIDENTIAL: ALL INTELLECTUAL PROPERTY RIGHTS HEREIN ARE THE PROPERTY OF TRYLON MANUFACTURING COMPANY LTD. ALL DUPLICATION, RECORDING, DISCLOSURE OR USE IS PROHIBITED WITHOUT WRITTEN CONSENT OF TRYLON MANUFACTURING COMPANY LTD.



CUSTOMER:		SITE:		SCALE: 155,000	
DATE: 16 FEB 07	BY: MRH	CHK:	APP:		
TITLE: 100FT S900 SUPERTITAN TOWER				DRAWING NO. 000001.620.0348	

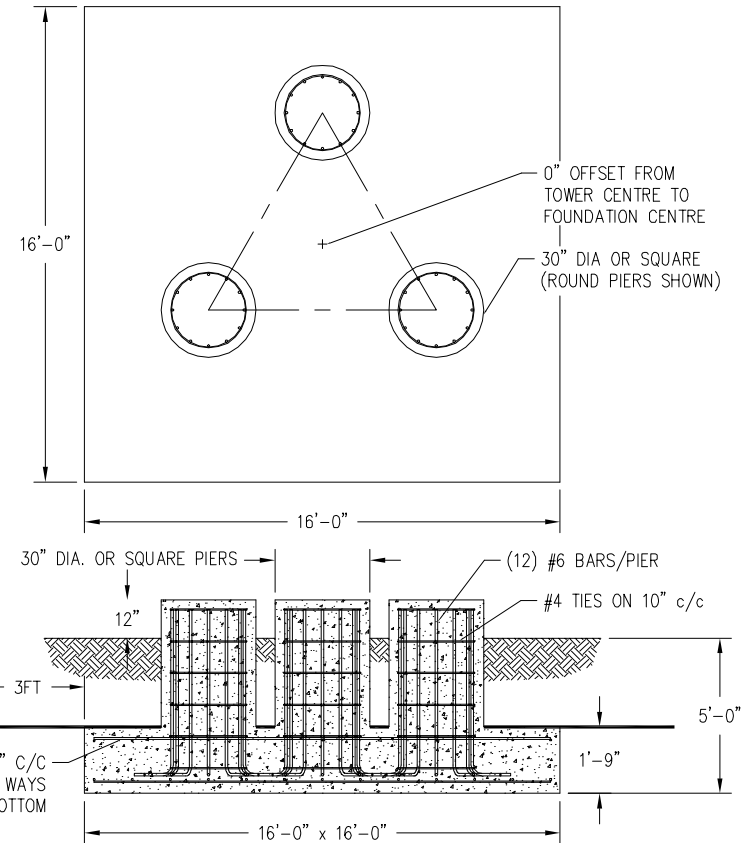
100FT S1000 SUPERTITAN TOWER



C A N A D A	MAXIMUM ALLOWABLE ANTENNA AREA - PER CSA-S37-01								
	ROUND ANTENNA MEMBER / FLAT ANTENNA MEMBER								
	CLASS 1 (10mm ICE)			CLASS 1 (25mm ICE)			CLASS 3 (25mm ICE)		
	350Pa	450Pa	550Pa	350Pa	450Pa	550Pa	350Pa	450Pa	550Pa
	83/59	63/45	50/35	83/59	63/45	50/35	178/119	130/87	104/69

FOUNDATION LOADS:
MAX. OVERTURNING MOMENT (K*FT) =
MAX. SHEAR (kips) =
MAX. AXIAL (kips) =

FOUNDATION DESIGN (NORMAL DRY SOIL)



CUBIC YARDS of CONCRETE				
PAD	RND PIER	SQ PIER	TOTAL RND	TOTAL SQ
16.59	0.77	0.98	18.91	19.54

- NOTES: 1) KNOCK-DOWN PART NUMBER 5.94.S1000.100.
2) PRE-ASSEMBLED PART NUMBER: NOT AVAILABLE.
3) ANTENNA LOADS ARE CENTRALLY LOCATED AND BALANCED, 3-FT OR LESS ABOVE THE TOWER TOP.
4) WIND LOADING ASSUMES (1) 1/2" TRANSMISSION LINE PER 10 SQ.FT. OF ROUND MEMBER ANTENNA AREA.

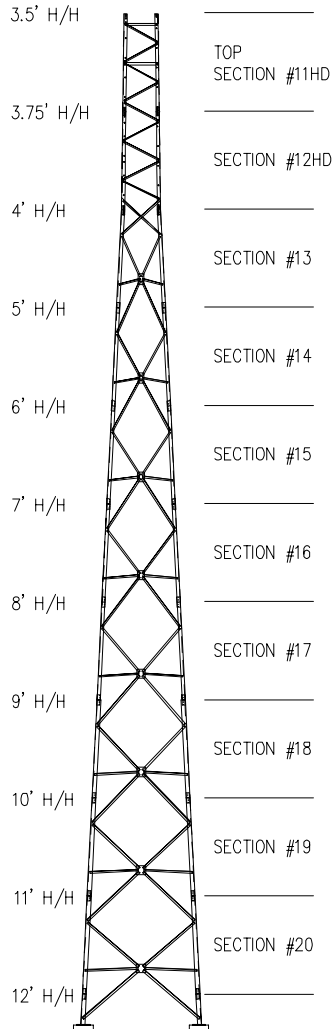
REV.	REV. BY:	CHK. BY:	DESCRIPTION	DATE

CONFIDENTIAL: ALL INTELLECTUAL PROPERTY RIGHTS HEREIN ARE THE PROPERTY OF TRYLON MANUFACTURING COMPANY LTD. ALL DUPLICATION, RECORDING, DISCLOSURE OR USE IS PROHIBITED WITHOUT WRITTEN CONSENT OF TRYLON MANUFACTURING COMPANY LTD.



CUSTOMER:		SITE:		SCALE: 155.000	
DATE: 19 FEB 07	BY: MRH	CHK:	APP:		
TITLE: 100FT S1000 SUPERTITAN TOWER				DRAWING NO. 000001.620.0349	

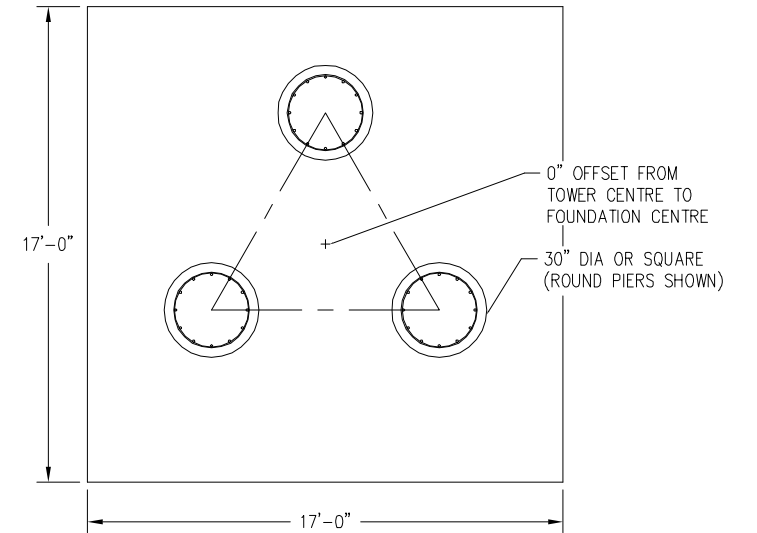
100FT S1100 SUPERTITAN TOWER



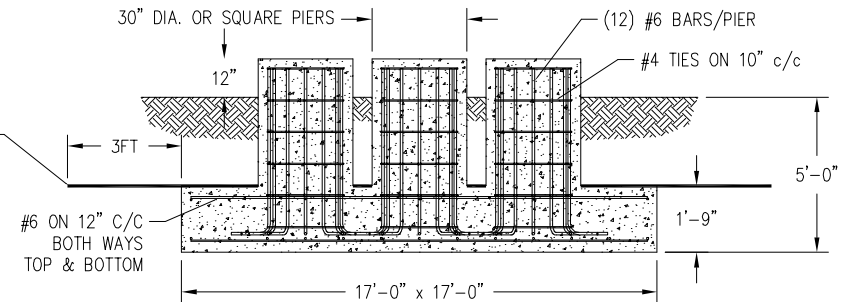
C A N A D A	MAXIMUM ALLOWABLE ANTENNA AREA - PER CSA-S37-01								
	ROUND ANTENNA MEMBER / FLAT ANTENNA MEMBER								
	CLASS 1 (10mm ICE)			CLASS 1 (25mm ICE)			CLASS 3 (25mm ICE)		
	350Pa	450Pa	550Pa	350Pa	450Pa	550Pa	350Pa	450Pa	550Pa
	145/103	105/75	79/56	145/103	105/75	75/53	348/232	252/168	194/129

FOUNDATION LOADS:
 MAX. OVERTURNING MOMENT (K*FT) =
 MAX. SHEAR (kips) =
 MAX. AXIAL (kips) =

FOUNDATION DESIGN (NORMAL DRY SOIL)



INSULATING STYROFOAM REQUIRED WHERE FROST PENETRATION EXCEEDS 6 FEET. PLACE STYROFOAM ON SLAB AND EXTEND 3 FEET BEYOND EDGE. HIGHLOAD 40 INSULATION BY DOW CHEMICALS IS RECOMMENDED.



CUBIC YARDS of CONCRETE				
PAD	RND PIER	SQ PIER	TOTAL RND	TOTAL SQ
18.73	0.77	0.98	21.05	21.68

- NOTES: 1) KNOCK-DOWN PART NUMBER 5.94.S1100.100.
 2) PRE-ASSEMBLED PART NUMBER: NOT AVAILABLE.
 3) ANTENNA LOADS ARE CENTRALLY LOCATED AND BALANCED, 3-FT OR LESS ABOVE THE TOWER TOP.
 4) WIND LOADING ASSUMES (1) 1/2" TRANSMISSION LINE PER 10 SQ.FT. OF ROUND MEMBER ANTENNA AREA.

REV.	REV. BY:	CHK. BY:	DESCRIPTION	DATE

CONFIDENTIAL: ALL INTELLECTUAL PROPERTY RIGHTS HEREIN ARE THE PROPERTY OF TRYLON MANUFACTURING COMPANY LTD. ALL DUPLICATION, RECORDING, DISCLOSURE OR USE IS PROHIBITED WITHOUT WRITTEN CONSENT OF TRYLON MANUFACTURING COMPANY LTD.



CUSTOMER:		SITE:		SCALE: 155,000	
DATE: 19 FEB 07	BY: MRH	CHK:	APP:		
TITLE: 100FT S1100 SUPERTITAN TOWER				DRAWING NO. 000001.620.0350	