

12" H/H		TOP SECTION #1
15" H/H		SECTION #2
18" H/H		SECTION #3
21" H/H		SECTION #4
24" H/H		SECTION #5
27" H/H		SECTION #6
30" H/H		SECTION #7
33" H/H		SECTION #8
36" H/H		SECTION #9
39" H/H		SECTION #10
42" H/H		SECTION #11
45" H/H		

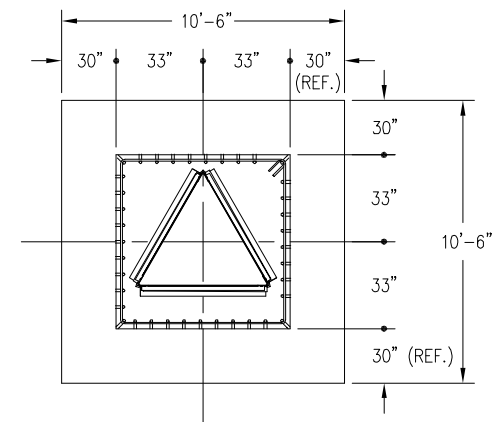
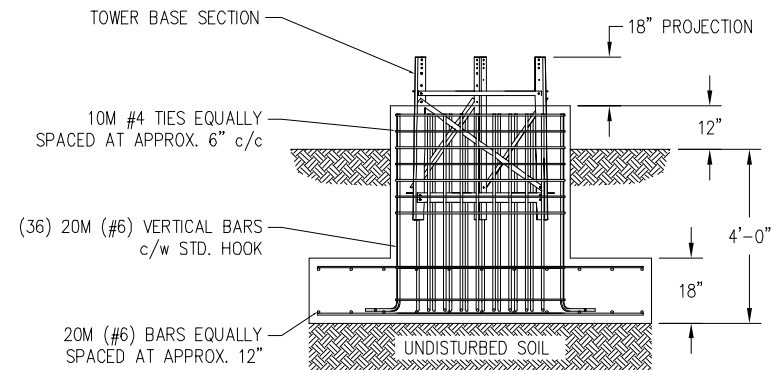
SECTION #1

— 5' EMBEDMENT SECTION  
INCLUDED IN KITS

C A N A D A	MAXIMUM ALLOWABLE ANTENNA AREA – PER CSA-S37-1								
	ROUND ANTENNA MEMBER / FLAT ANTENNA MEMBER								
	CLASS 1 (10mm ICE)			CLASS 1 (25mm ICE)			CLASS 3 (25mm ICE)		
	350Pa	450Pa	550Pa	350Pa	450Pa	550Pa	350Pa	450Pa	550Pa
	-/-	-/-	-/-	-/-	-/-	-/-	12/8	-/-	-/-

FOUNDATION LOADS:  
MAX. OVERTURNING MOMENT (K\*FT) =  
MAX. SHEAR (kips) =  
MAX. AXIAL (kips) =

DESIGN ASSUMES THAT FROST DEPTH IS LESS THAN 4'-0"




CUBIC YARDS OF CONCRETE		
PAD CONC VOL.	PIER CONC VOL.	TOTAL VOL.
6.1	3.9	10.0

CONFIDENTIAL: ALL INTELLECTUAL PROPERTY RIGHTS HEREIN ARE THE PROPERTY OF TRYLON MANUFACTURING COMPANY LTD. ALL DUPLICATION, RECORDING, DISCLOSURE OR USE IS PROHIBITED WITHOUT WRITTEN CONSENT OF TRYLON MANUFACTURING COMPANY LTD.



CUSTOMER:		SITE:		SCALE: 170.000	
DATE: 17 FEB 07		BY: EP		CHK: APP:	
TITLE: 110FT S100 SUPERTITAN TOWER				DRAWING NO. 000001.620.0351	

NOTES: 1) KNOCK-DOWN PART NUMBER 5.94.S100.110.  
2) PRE-ASSEMBLED PART NUMBER: 5.95.S100.110.  
3) ANTENNA LOADS ARE CENTRALLY LOCATED AND BALANCED, 3-FT OR LESS ABOVE THE TOWER TOP.  
4) WIND LOADING ASSUMES (1) 1/2" TRANSMISSION LINE PER 10 SQ.FT. OF ROUND MEMBER ANTENNA AREA.

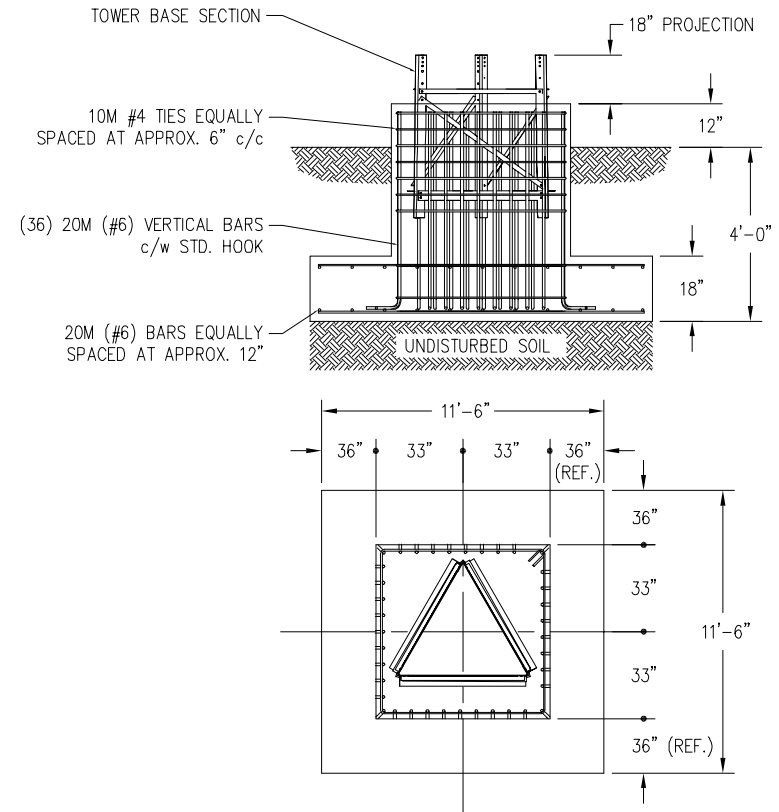
					<div> TRYLON TSE</div>			
					CUSTOMER:	SITE:	SCALE:	170.000
					DATE:	BY:	CHK:	APP:
					17 FEB 07	EP		
					TITLE:	DRAWING NO.		
					110FT S100 SUPERTITAN TOWER			000001.620.0351
REV.	REV. BY:	CHK. BY:	DESCRIPTION	DATE				

15" H/H		TOP SECTION #2
18" H/H		SECTION #3
21" H/H		SECTION #4
24" H/H		SECTION #5
27" H/H		SECTION #6
30" H/H		SECTION #7
33" H/H		SECTION #8
36" H/H		SECTION #9
39" H/H		SECTION #10
42" H/H		SECTION #11
45" H/H		SECTION #12
48" H/H		

C A N A D A	MAXIMUM ALLOWABLE ANTENNA AREA – PER CSA-S37-1								
	ROUND ANTENNA MEMBER / FLAT ANTENNA MEMBER								
	CLASS 1 (10mm ICE)			CLASS 1 (25mm ICE)			CLASS 3 (25mm ICE)		
	350Pa	450Pa	550Pa	350Pa	450Pa	550Pa	350Pa	450Pa	550Pa
	-/-	-/-	-/-	-/-	-/-	-/-	12/12	-/-	-/-

– 5' EMBEDMENT SECTION  
INCLUDED IN KITS

DESIGN ASSUMES THAT FROST DEPTH IS LESS THAN 4'-0"




CUBIC YARDS OF CONCRETE		
PAD CONC VOL.	PIER CONC VOL.	TOTAL VOL.
7.4	3.9	11.3

CONFIDENTIAL: ALL INTELLECTUAL PROPERTY RIGHTS HEREIN ARE THE PROPERTY OF  
TRYLON MANUFACTURING COMPANY LTD. ALL DUPLICATION, RECORDING, DISCLOSURE OR  
USE IS PROHIBITED WITHOUT WRITTEN CONSENT OF TRYLON MANUFACTURING COMPANY LTD.

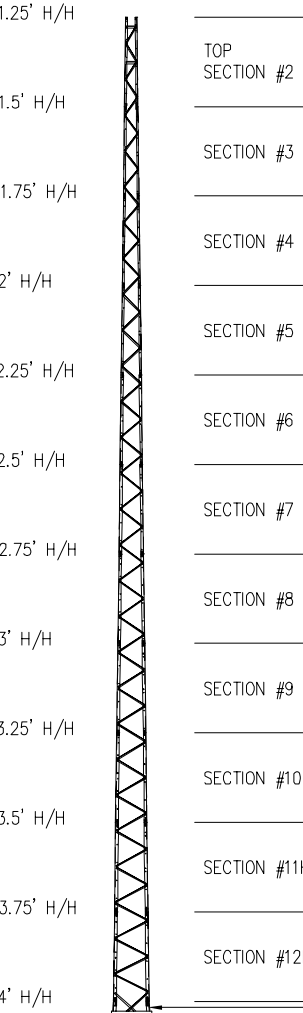


CUSTOMER:		SITE:		SCALE: 170.000	
DATE: 17 FEB 07		BY: EP		CHK: APP:	
TITLE: 110FT S200 SUPERTITAN TOWER				DRAWING NO. 000001.620.0352	

NOTES: 1) KNOCK-DOWN PART NUMBER: 5.94.S200.110.  
2) PRE-ASSEMBLED PART NUMBER: 5.95.S200.110.  
3) ANTENNA LOADS ARE CENTRALLY LOCATED AND BALANCED, 3-FT OR LESS ABOVE THE TOWER TOP.  
4) WIND LOADING ASSUMES (1) 1/2" TRANSMISSION LINE PER 10 SQ.FT. OF ROUND MEMBER ANTENNA AREA.

					<div> TRYLON Tsf</div>			
					CUSTOMER:	SITE:	SCALE:	170.000
					DATE:	BY:	CHK:	APP:
					17 FEB 07	EP		
					TITLE:	DRAWING NO.		
					110FT S200 SUPERTITAN TOWER			000001.620.0352
REV.	REV. BY:	CHK. BY:	DESCRIPTION	DATE				

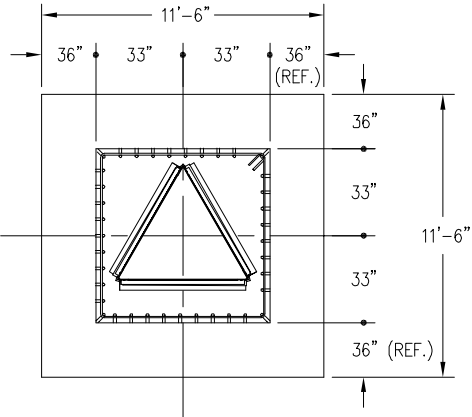
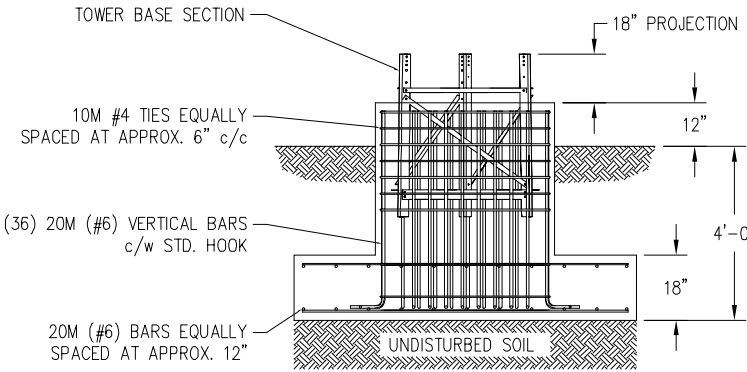
110FT H200 SUPERTITAN TOWER



C A N A D A	MAXIMUM ALLOWABLE ANTENNA AREA – PER CSA-S37-1								
	ROUND ANTENNA MEMBER / FLAT ANTENNA MEMBER								
	CLASS 1 (10mm ICE)			CLASS 1 (25mm ICE)			CLASS 3 (25mm ICE)		
	350Pa	450Pa	550Pa	350Pa	450Pa	550Pa	350Pa	450Pa	550Pa
	9/6	-/-	-/-	9/6	-/-	-/-	28/18	-/-	-/-

FOUNDATION LOADS:  
MAX. OVERTURNING MOMENT (K\*FT) =  
MAX. SHEAR (kips) =  
MAX. AXIAL (kips) =

FOUNDATION DESIGN (NORMAL DRY SOIL)  
DESIGN ASSUMES THAT FROST DEPTH IS LESS THAN 4'-0"



CUBIC YARDS OF CONCRETE		
PAD CONC VOL.	PIER CONC VOL.	TOTAL VOL.
7.4	3.9	11.3

- NOTES: 1) KNOCK-DOWN PART NUMBER 5.94.H200.110.  
2) PRE-ASSEMBLED PART NUMBER: 5.95.H200.110.  
3) ANTENNA LOADS ARE CENTRALLY LOCATED AND BALANCED, 3-FT OR LESS ABOVE THE TOWER TOP.  
4) WIND LOADING ASSUMES (1) 1/2" TRANSMISSION LINE PER 10 SQ.FT. OF ROUND MEMBER ANTENNA AREA.

REV.	BY:	CHK.	DATE	DESCRIPTION

CONFIDENTIAL: ALL INTELLECTUAL PROPERTY RIGHTS HEREIN ARE THE PROPERTY OF TRYLON MANUFACTURING COMPANY LTD. ALL DUPLICATION, RECORDING, DISCLOSURE OR USE IS PROHIBITED WITHOUT WRITTEN CONSENT OF TRYLON MANUFACTURING COMPANY LTD.

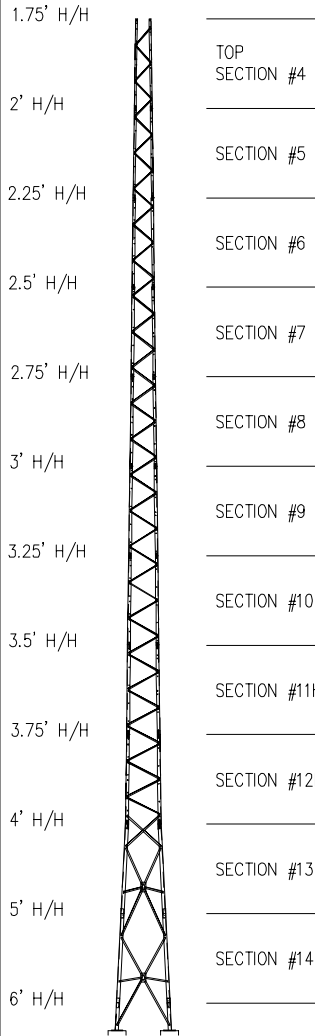
**TRYLON TSF**

CUSTOMER: SITE: SCALE: 170.000

DATE: 17 FEB 07 BY: EP CHK: APP:

TITLE: 110FT H200 SUPERTITAN TOWER DRAWING NO. 000001.620.0353

# 110FT S400 SUPERTITAN TOWER

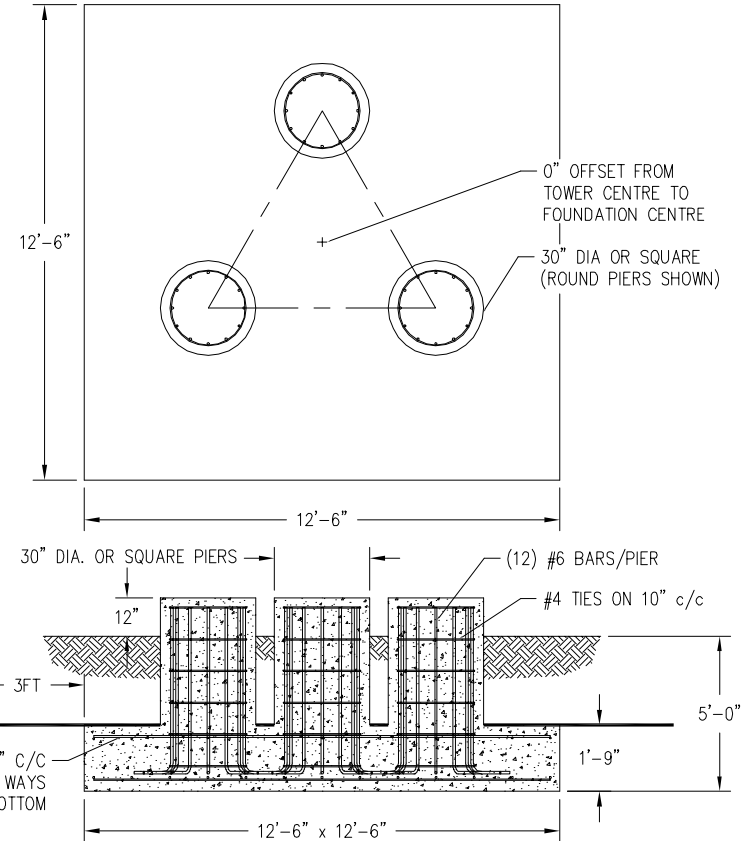


C A N A D A	MAXIMUM ALLOWABLE ANTENNA AREA - PER CSA-S37-1								
	ROUND ANTENNA MEMBER / FLAT ANTENNA MEMBER								
	CLASS 1 (10mm ICE)			CLASS 1 (25mm ICE)			CLASS 3 (25mm ICE)		
	350Pa	450Pa	550Pa	350Pa	450Pa	550Pa	350Pa	450Pa	550Pa
	32/22	15/10	-/-	30/21	15/10	-/-	61/41	37/25	20/13

FOUNDATION LOADS:  
 MAX. OVERTURNING MOMENT (K\*FT) =  
 MAX. SHEAR (kips) =  
 MAX. AXIAL (kips) =


INSULATING STYROFOAM REQUIRED WHERE FROST PENETRATION EXCEEDS 6 FEET. PLACE STYROFOAM ON SLAB AND EXTEND 3 FEET BEYOND EDGE. HIGHLOAD 40 INSULATION BY DOW CHEMICALS IS RECOMMENDED.

## FOUNDATION DESIGN (NORMAL DRY SOIL)

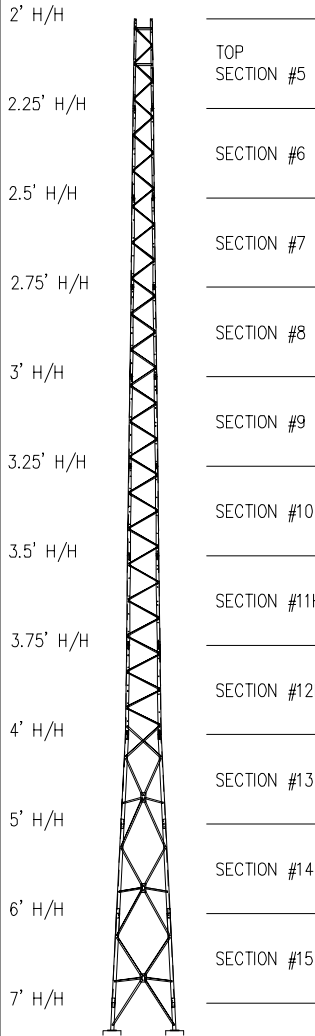


CUBIC YARDS of CONCRETE				
PAD	RND PIER	SQ PIER	TOTAL RND	TOTAL SQ
10.13	0.77	0.98	12.45	13.08

- NOTES: 1) KNOCK-DOWN PART NUMBER 5.94.S400.110.  
 2) PRE-ASSEMBLED PART NUMBER: NOT AVAILABLE.  
 3) ANTENNA LOADS ARE CENTRALLY LOCATED AND BALANCED, 3-FT OR LESS ABOVE THE TOWER TOP.  
 4) WIND LOADING ASSUMES (1) 1/2" TRANSMISSION LINE PER 10 SQ.FT. OF ROUND MEMBER ANTENNA AREA.

						<div>TRYLON Tsf</div>							
						CUSTOMER:		SITE:		SCALE: 170.000			
						DATE: 17 FEB 07		BY: EP		CHK: APP:			
						TITLE: 110FT S400 SUPERTITAN TOWER						DRAWING NO. 000001.620.0354	
REV.	REV. BY:	CHK. BY:	DESCRIPTION			DATE							

# 110FT S500 SUPERTITAN TOWER

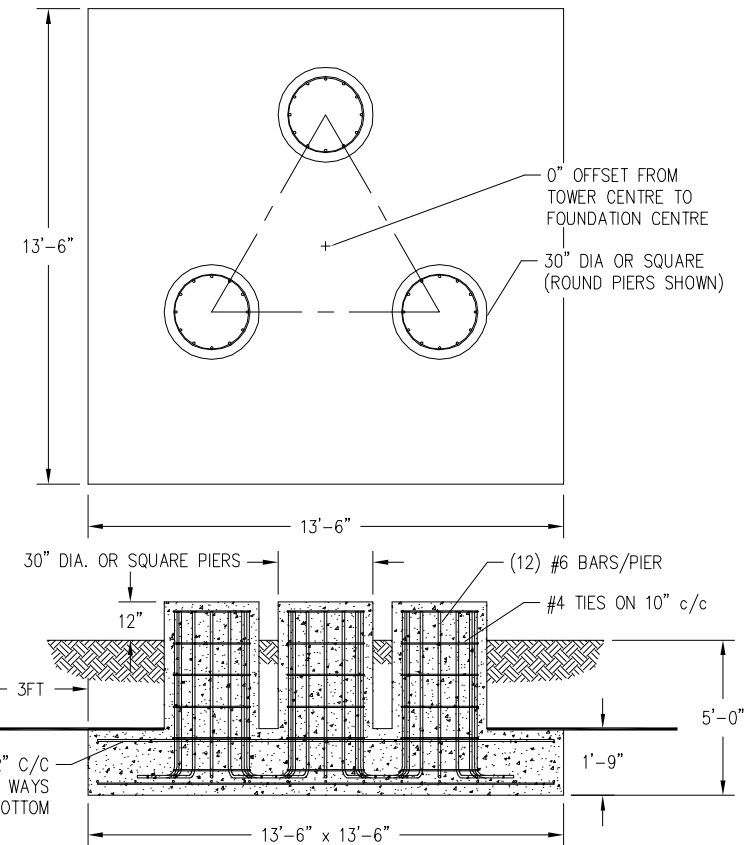


C A N A D A	MAXIMUM ALLOWABLE ANTENNA AREA - PER CSA-S37-1								
	ROUND ANTENNA MEMBER / FLAT ANTENNA MEMBER								
	CLASS 1 (10mm ICE)			CLASS 1 (25mm ICE)			CLASS 3 (25mm ICE)		
	350Pa	450Pa	550Pa	350Pa	450Pa	550Pa	350Pa	450Pa	550Pa
	52/37	27/19	9/6	47/33	27/19	9/6	86/57	56/37	38/25

FOUNDATION LOADS:  
MAX. OVERTURNING MOMENT (K\*FT) =  
MAX. SHEAR (kips) =  
MAX. AXIAL (kips) =

INSULATING STYROFOAM REQUIRED  
WHERE FROST PENETRATION EXCEEDS  
6 FEET. PLACE STYROFOAM ON SLAB  
AND EXTEND 3 FEET BEYOND EDGE.  
HIGHLOAD 40 INSULATION BY DOW  
CHEMICALS IS RECOMMENDED.

## FOUNDATION DESIGN (NORMAL DRY SOIL)



CUBIC YARDS of CONCRETE				
PAD	RND PIER	SQ PIER	TOTAL RND	TOTAL SQ
11.81	0.77	0.98	14.13	14.76

- NOTES: 1) KNOCK-DOWN PART NUMBER 5.94.S500.110.  
2) PRE-ASSEMBLED PART NUMBER: NOT AVAILABLE.  
3) ANTENNA LOADS ARE CENTRALLY LOCATED AND BALANCED, 3-FT OR LESS ABOVE THE TOWER TOP.  
4) WIND LOADING ASSUMES (1) 1/2" TRANSMISSION LINE PER 10 SQ.FT. OF ROUND MEMBER ANTENNA AREA.

REV.	BY:	CHK.	DATE	DESCRIPTION

CONFIDENTIAL: ALL INTELLECTUAL PROPERTY RIGHTS HEREIN ARE THE PROPERTY OF TRYLON MANUFACTURING COMPANY LTD. ALL DUPLICATION, RECORDING, DISCLOSURE OR USE IS PROHIBITED WITHOUT WRITTEN CONSENT OF TRYLON MANUFACTURING COMPANY LTD.

CUSTOMER: SITE: SCALE: 170.000

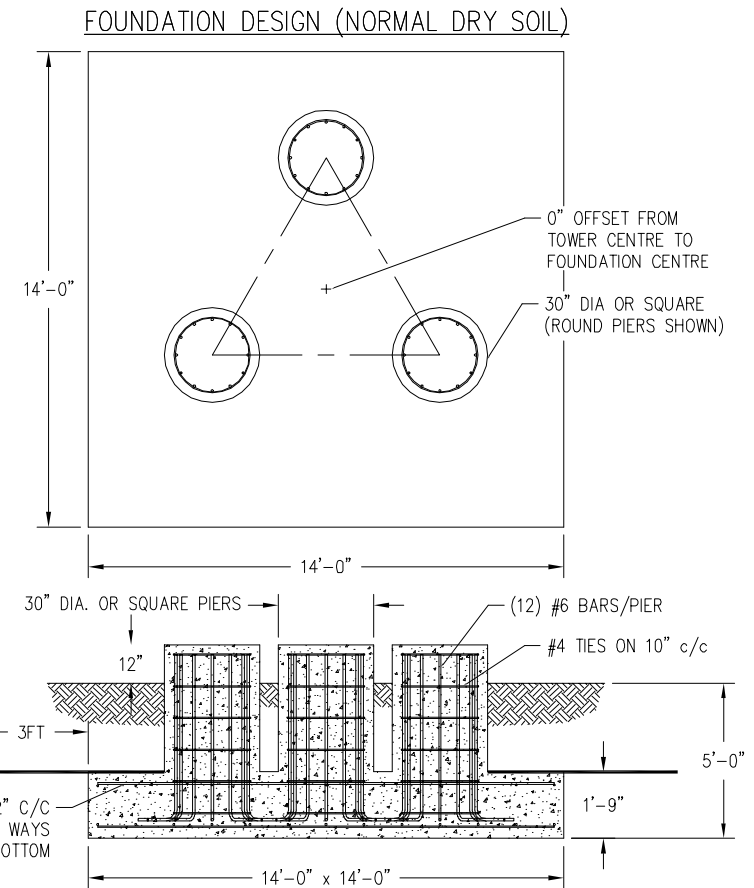
DATE: 17 FEB 07 BY: EP CHK: APP:

TITLE: 110FT S500 SUPERTITAN TOWER DRAWING NO. 000001.620.0355

2.25' H/H	TOP SECTION #6
2.5' H/H	SECTION #7
2.75' H/H	SECTION #8
3' H/H	SECTION #9
3.25' H/H	SECTION #10
3.5' H/H	SECTION #11
3.75' H/H	SECTION #12
4' H/H	SECTION #13
5' H/H	SECTION #14
6' H/H	SECTION #15
7' H/H	SECTION #16
8' H/H	

C A N A D A	MAXIMUM ALLOWABLE ANTENNA AREA – PER CSA-S37-1								
	ROUND ANTENNA MEMBER / FLAT ANTENNA MEMBER								
	CLASS 1 (10mm ICE)			CLASS 1 (25mm ICE)			CLASS 3 (25mm ICE)		
	350Pa	450Pa	550Pa	350Pa	450Pa	550Pa	350Pa	450Pa	550Pa
	67/47	37/26	15/10	60/42	37/26	15/10	120/80	84/56	49/33

INSULATING STYROFOAM REQUIRED WHERE FROST PENETRATION EXCEEDS 6 FEET. PLACE STYROFOAM ON SLAB AND EXTEND 3 FEET BEYOND EDGE. HIGHLOAD 40 INSULATION BY DOW CHEMICALS IS RECOMMENDED.



CUBIC YARDS of CONCRETE				
PAD	RND PIER	SQ PIER	TOTAL RND	TOTAL SQ
12.70	0.77	0.98	15.02	15.66



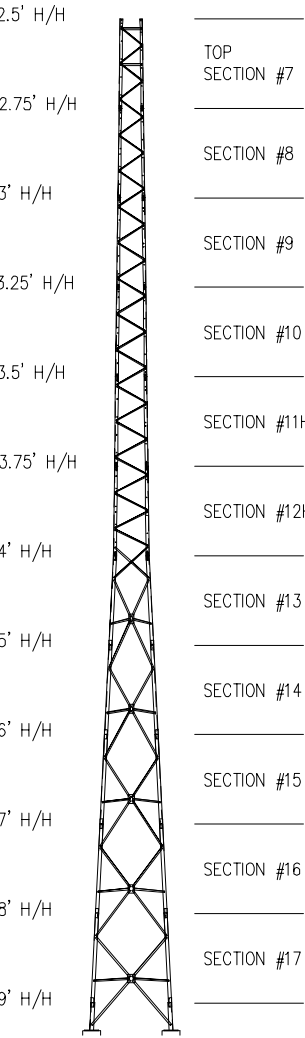
**TRYLON TSF**

CUSTOMER:		SITE:		SCALE: 170.000	
DATE: 17 FEB 07		BY: EP		CHK: APP:	

TITLE:	DRAWING NO.
110FT S600 SUPERTITAN TOWER	000001.620.0356

REV.	REV.	CHK.		DESCRIPTION	DATE

110FT S700 SUPERTITAN TOWER

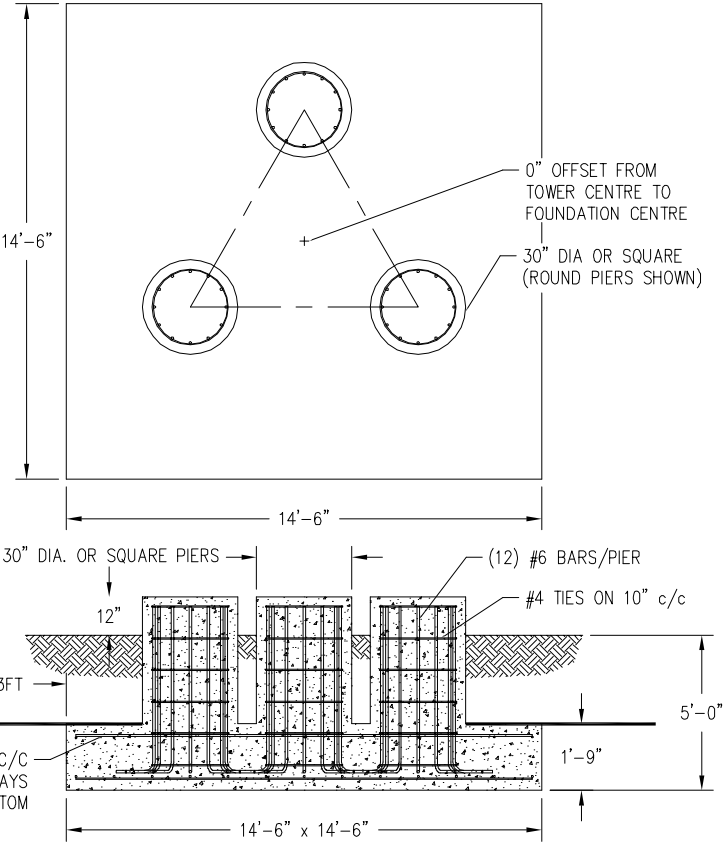


C A N A D A	MAXIMUM ALLOWABLE ANTENNA AREA – PER CSA-S37-1								
	ROUND ANTENNA MEMBER / FLAT ANTENNA MEMBER								
	CLASS 1 (10mm ICE)			CLASS 1 (25mm ICE)			CLASS 3 (25mm ICE)		
	350Pa	450Pa	550Pa	350Pa	450Pa	550Pa	350Pa	450Pa	550Pa
	65/46	40/28	23/16	65/46	40/28	23/16	155/103	100/67	62/41

FOUNDATION LOADS:  
MAX. OVERTURNING MOMENT (K\*FT) =  
MAX. SHEAR (kips) =  
MAX. AXIAL (kips) =

INSULATING STYROFOAM REQUIRED  
WHERE FROST PENETRATION EXCEEDS  
6 FEET. PLACE STYROFOAM ON SLAB  
AND EXTEND 3 FEET BEYOND EDGE.  
HIGHLOAD 40 INSULATION BY DOW  
CHEMICALS IS RECOMMENDED.

FOUNDATION DESIGN (NORMAL DRY SOIL)



CUBIC YARDS of CONCRETE				
PAD	RND PIER	SQ PIER	TOTAL RND	TOTAL SQ
13.63	0.77	0.98	15.95	16.58

- NOTES: 1) KNOCK-DOWN PART NUMBER 5.94.S700.110.  
2) PRE-ASSEMBLED PART NUMBER:NOT AVAILABLE.  
3) ANTENNA LOADS ARE CENTRALLY LOCATED AND BALANCED, 3-FT OR LESS ABOVE THE TOWER TOP.  
4) WIND LOADING ASSUMES (1) 1/2" TRANSMISSION LINE PER 10 SQ.FT. OF ROUND MEMBER ANTENNA AREA.

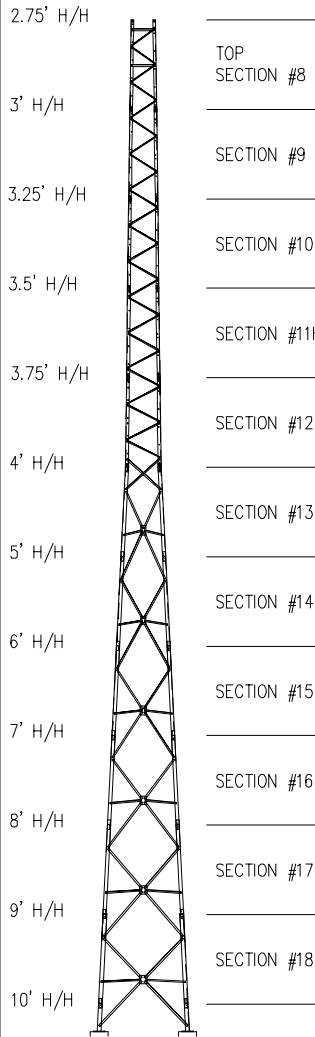
REV.	REV. BY:	CHK. BY:	DESCRIPTION	DATE

CONFIDENTIAL: ALL INTELLECTUAL PROPERTY RIGHTS HEREIN ARE THE PROPERTY OF TRYLON MANUFACTURING COMPANY LTD. ALL DUPLICATION, RECORDING, DISCLOSURE OR USE IS PROHIBITED WITHOUT WRITTEN CONSENT OF TRYLON MANUFACTURING COMPANY LTD.



CUSTOMER:		SITE:		SCALE: 170.000	
DATE: 17 FEB 07	BY: EP	CHK:	APP:		
TITLE: 110FT S700 SUPERTITAN TOWER				DRAWING NO. 000001.620.0357	

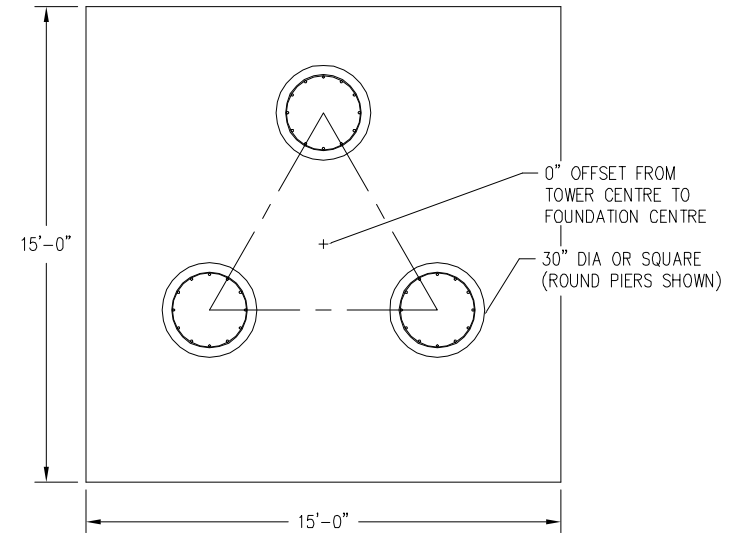
# 110FT S800 SUPERTITAN TOWER



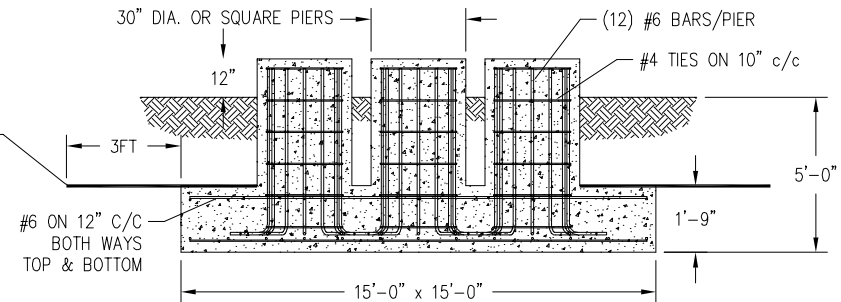
C A N A D A	MAXIMUM ALLOWABLE ANTENNA AREA - PER CSA-S37-1								
	ROUND ANTENNA MEMBER / FLAT ANTENNA MEMBER								
	CLASS 1 (10mm ICE)			CLASS 1 (25mm ICE)			CLASS 3 (25mm ICE)		
	350Pa	450Pa	550Pa	350Pa	450Pa	550Pa	350Pa	450Pa	550Pa
	71/50	50/35	35/25	71/50	49/35	35/25	155/103	104/69	74/49

FOUNDATION LOADS:  
MAX. OVERTURNING MOMENT (K\*FT) =  
MAX. SHEAR (kips) =  
MAX. AXIAL (kips) =

## FOUNDATION DESIGN (NORMAL DRY SOIL)



INSULATING STYROFOAM REQUIRED WHERE FROST PENETRATION EXCEEDS 6 FEET. PLACE STYROFOAM ON SLAB AND EXTEND 3 FEET BEYOND EDGE. HIGHLOAD 40 INSULATION BY DOW CHEMICALS IS RECOMMENDED.



CUBIC YARDS of CONCRETE				
PAD	RND PIER	SQ PIER	TOTAL RND	TOTAL SQ
14.58	0.77	0.98	16.90	17.53

- NOTES: 1) KNOCK-DOWN PART NUMBER 5.94.S800.110.  
2) PRE-ASSEMBLED PART NUMBER: NOT AVAILABLE.  
3) ANTENNA LOADS ARE CENTRALLY LOCATED AND BALANCED, 3-FT OR LESS ABOVE THE TOWER TOP.  
4) WIND LOADING ASSUMES (1) 1/2" TRANSMISSION LINE PER 10 SQ.FT. OF ROUND MEMBER ANTENNA AREA.

				CONFIDENTIAL: ALL INTELLECTUAL PROPERTY RIGHTS HEREIN ARE THE PROPERTY OF TRYLON MANUFACTURING COMPANY LTD. ALL DUPLICATION, RECORDING, DISCLOSURE OR USE IS PROHIBITED WITHOUT WRITTEN CONSENT OF TRYLON MANUFACTURING COMPANY LTD.			
				CUSTOMER:		SITE:	
				SCALE: 170.000			
				DATE: 17 FEB 07	BY: EP	CHK:	APP:
				TITLE: 110FT S800 SUPERTITAN TOWER			DRAWING NO. 000001.620.0358
REV.	REV. BY:	CHK. BY:	DESCRIPTION	DATE			

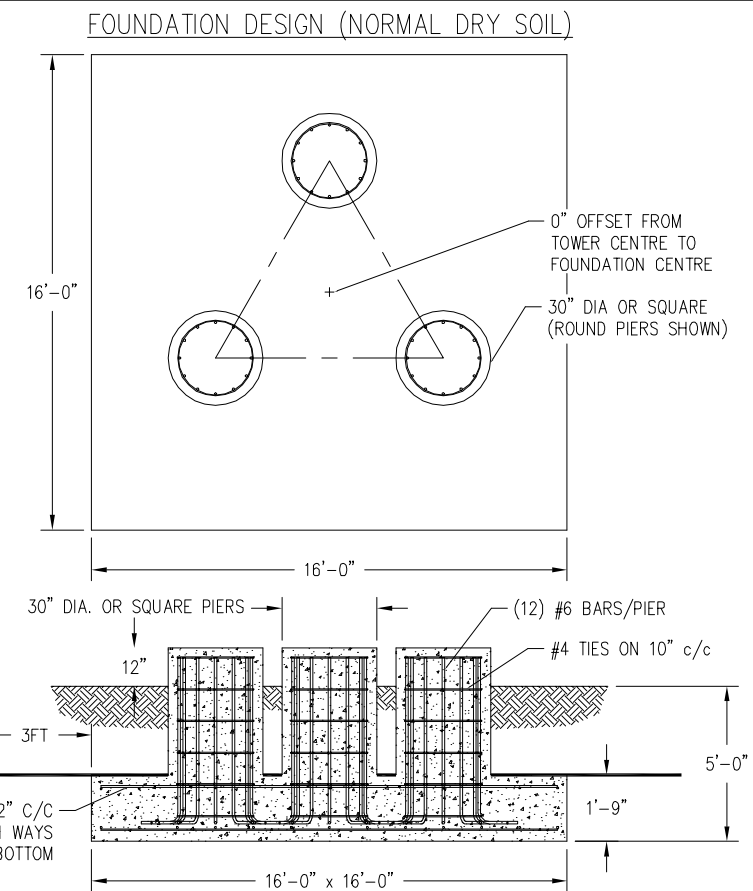


Diagram illustrating the height segments and section numbers for a 19-section tower structure. The segments are labeled on the left, and the corresponding section numbers are listed on the right.

Height Segment	Section Number
3' H/H	TOP SECTION #9
3.25' H/H	SECTION #10
3.5' H/H	SECTION #11
3.75' H/H	SECTION #12
4' H/H	SECTION #13
5' H/H	SECTION #14
6' H/H	SECTION #15
7' H/H	SECTION #16
8' H/H	SECTION #17
9' H/H	SECTION #18
10' H/H	SECTION #19
11' H/H	

C A N A D A	MAXIMUM ALLOWABLE ANTENNA AREA – PER CSA-S37-1								
	ROUND ANTENNA MEMBER / FLAT ANTENNA MEMBER								
	CLASS 1 (10mm ICE)			CLASS 1 (25mm ICE)			CLASS 3 (25mm ICE)		
	350Pa	450Pa	550Pa	350Pa	450Pa	550Pa	350Pa	450Pa	550Pa
	73/52	53/37	39/27	73/52	53/37	39/27	165/110	121/81	90/60

FOUNDATION LOADS:  
MAX. OVERTURNING MOMENT (K\*FT) =  
MAX. SHEAR (kips) =  
MAX. AXIAL (kips) =




CUBIC YARDS of CONCRETE				
PAD	RND PIER	SQ PIER	TOTAL RND	TOTAL SQ
16.59	0.77	0.98	18.91	19.54

CONFIDENTIAL: ALL INTELLECTUAL PROPERTY RIGHTS HEREIN ARE THE PROPERTY OF TRYLON MANUFACTURING COMPANY LTD. ALL DUPLICATION, RECORDING, DISCLOSURE OR USE IS PROHIBITED WITHOUT WRITTEN CONSENT OF TRYLON MANUFACTURING COMPANY LTD.

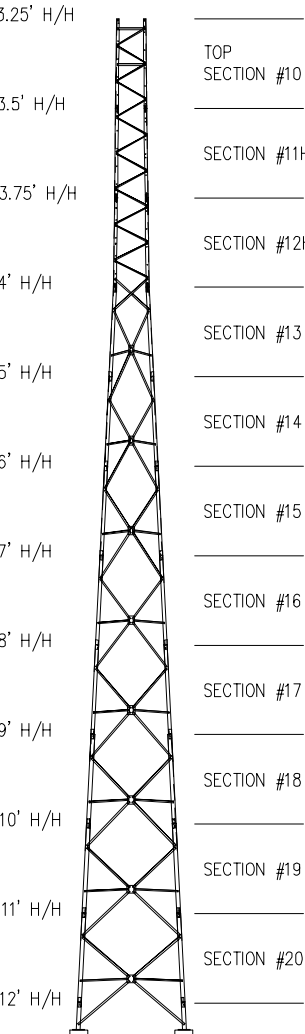


CUSTOMER:		SITE:		SCALE: 170.000	
DATE: 17 FEB 07		BY: EP	CHK:		APP:
TITLE: 110FT S900 SUPERTITAN TOWER				DRAWING NO. 000001.620.0359	

NOTES: 1) KNOCK-DOWN PART NUMBER 5.94.S900.110.  
2) PRE-ASSEMBLED PART NUMBER: NOT AVAILABLE  
3) ANTENNA LOADS ARE CENTRALLY LOCATED AND BALANCED, 3-FT OR LESS ABOVE THE TOWER TOP.  
4) WIND LOADING ASSUMES (1) 1/2" TRANSMISSION LINE PER 10 SQ.FT. OF ROUND MEMBER ANTENNA AREA.

					<div></div> <div>TRYLON TSE</div>			
					CUSTOMER:	SITE:	SCALE:	170.000
					DATE: 17 FEB 07	BY: EP	CHK:	APP:
					TITLE: 110FT S900 SUPERTITAN TOWER			DRAWING NO. 000001.620.0359
REV.	REV. BY.	CHK. SY.	DESCRIPTION	DATE				

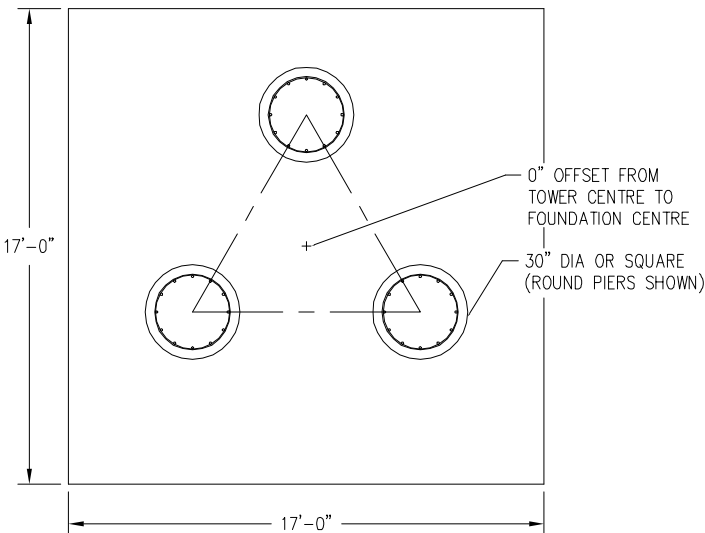
110FT S1000 SUPERTITAN TOWER



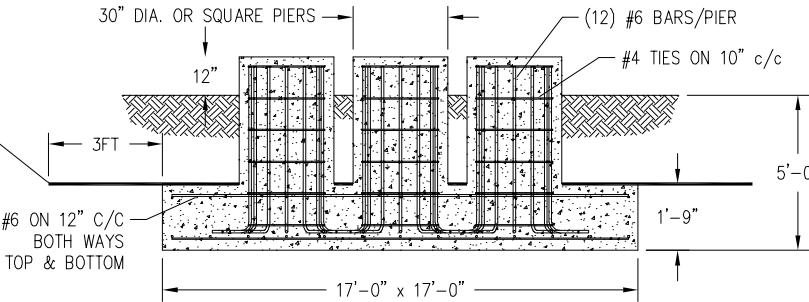
C A N A D A	MAXIMUM ALLOWABLE ANTENNA AREA – PER CSA-S37-1								
	ROUND ANTENNA MEMBER / FLAT ANTENNA MEMBER								
	CLASS 1 (10mm ICE)			CLASS 1 (25mm ICE)			CLASS 3 (25mm ICE)		
	350Pa	450Pa	550Pa	350Pa	450Pa	550Pa	350Pa	450Pa	550Pa
	81/57	61/43	49/35	81/57	61/43	49/35	172/115	132/88	100/67

FOUNDATION LOADS:  
MAX. OVERTURNING MOMENT (K\*FT) =  
MAX. SHEAR (kips) =  
MAX. AXIAL (kips) =

FOUNDATION DESIGN (NORMAL DRY SOIL)



INSULATING STYROFOAM REQUIRED WHERE FROST PENETRATION EXCEEDS 6 FEET. PLACE STYROFOAM ON SLAB AND EXTEND 3 FEET BEYOND EDGE. HIGHLOAD 40 INSULATION BY DOW CHEMICALS IS RECOMMENDED.



CUBIC YARDS of CONCRETE				
PAD	RND PIER	SQ PIER	TOTAL RND	TOTAL SQ
18.73	0.77	0.98	21.05	21.68

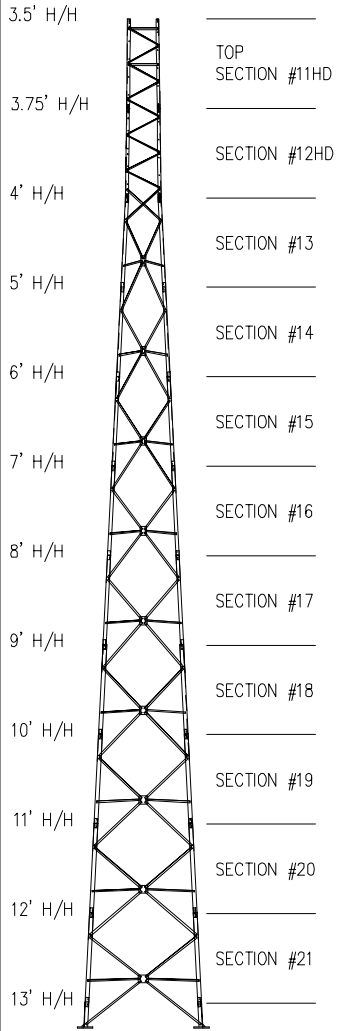
- NOTES: 1) KNOCK-DOWN PART NUMBER 5.94.S1000.110.  
2) PRE-ASSEMBLED PART NUMBER: NOT AVAILABLE  
3) ANTENNA LOADS ARE CENTRALLY LOCATED AND BALANCED, 3-FT OR LESS ABOVE THE TOWER TOP.  
4) WIND LOADING ASSUMES (1) 1/2" TRANSMISSION LINE PER 10 SQ.FT. OF ROUND MEMBER ANTENNA AREA.

REV.	REV. BY:	CHK. BY:	DESCRIPTION	DATE

CONFIDENTIAL: ALL INTELLECTUAL PROPERTY RIGHTS HEREIN ARE THE PROPERTY OF TRYLON MANUFACTURING COMPANY LTD. ALL DUPLICATION, RECORDING, DISCLOSURE OR USE IS PROHIBITED WITHOUT WRITTEN CONSENT OF TRYLON MANUFACTURING COMPANY LTD.

CUSTOMER:	SITE:	SCALE:
DATE: 17 FEB 07	BY: EP	APP:
TITLE: 110FT S1000 SUPERTITAN TOWER		DRAWING NO. 000001.620.0360

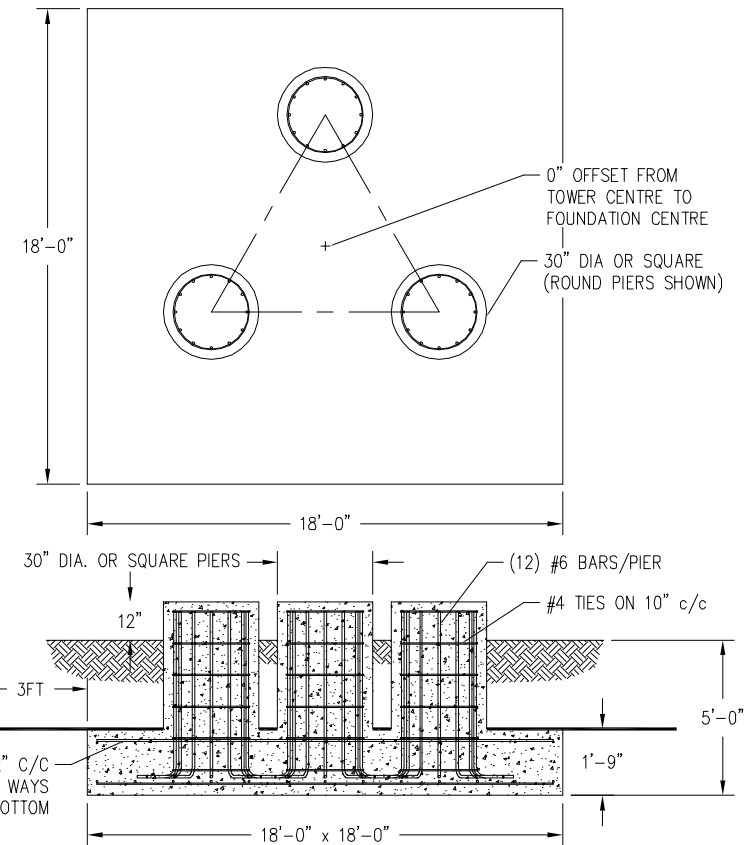
# 110FT S1100 SUPERTITAN TOWER



C A N A D A	MAXIMUM ALLOWABLE ANTENNA AREA – PER CSA-S37-1								
	ROUND ANTENNA MEMBER / FLAT ANTENNA MEMBER								
	CLASS 1 (10mm ICE)			CLASS 1 (25mm ICE)			CLASS 3 (25mm ICE)		
	350Pa	450Pa	550Pa	350Pa	450Pa	550Pa	350Pa	450Pa	550Pa
	135/96	96/68	72/51	135/96	96/68	72/51	340/227	244/163	188/125

FOUNDATION LOADS:  
MAX. OVERTURNING MOMENT (K\*FT) =  
MAX. SHEAR (kips) =  
MAX. AXIAL (kips) =


## FOUNDATION DESIGN (NORMAL DRY SOIL)



INSULATING STYROFOAM REQUIRED WHERE FROST PENETRATION EXCEEDS 6 FEET. PLACE STYROFOAM ON SLAB AND EXTEND 3 FEET BEYOND EDGE. HIGHLOAD 40 INSULATION BY DOW CHEMICALS IS RECOMMENDED.

CUBIC YARDS of CONCRETE				
PAD	RND PIER	SQ PIER	TOTAL RND	TOTAL SQ
21.00	0.77	0.98	23.32	23.95

- NOTES: 1) KNOCK-DOWN PART NUMBER 5.94.S1100.110.  
2) PRE-ASSEMBLED PART NUMBER: NOT AVAILABLE  
3) ANTENNA LOADS ARE CENTRALLY LOCATED AND BALANCED, 3-FT OR LESS ABOVE THE TOWER TOP.  
4) WIND LOADING ASSUMES (1) 1/2" TRANSMISSION LINE PER 10 SQ.FT. OF ROUND MEMBER ANTENNA AREA.

										TRYLON TSE					
						CUSTOMER:		SITE:		SCALE:		170.000			
						DATE: 18 FEB 07		BY: EP		CHK:		APP:			
						TITLE:								DRAWING NO.	
						110FT S1100 SUPERTITAN TOWER								000001.620.0361	
REV.	REV. BY:	CHK. BY:	DESCRIPTION			DATE									