

## Antenna Mounts

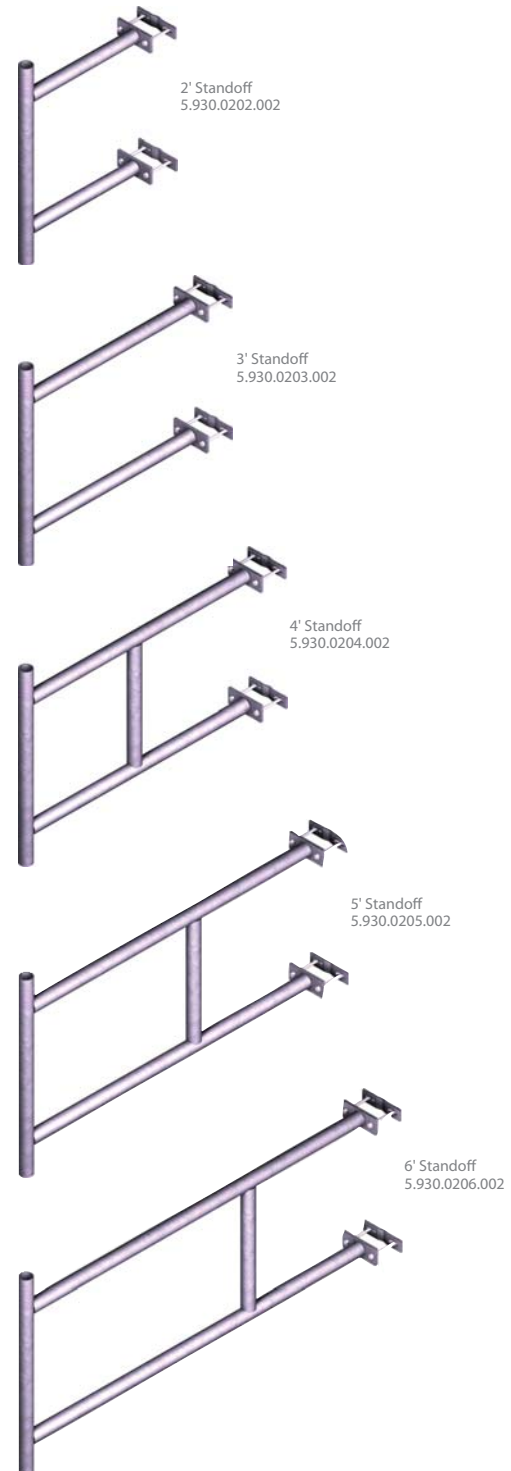
### Light Standoff Mounts

Light Standoffs are a perfect mounting solution for wireless omni-directional antennas when separation from the tower structure is essential. They come in five standard standoffs ranging from 2' to 6' in 1' increments to suit your exact site needs.

Members are welded to the strictest standards and are made from 2 $\frac{3}{8}$ " OD structural tubes, which are then hot dip galvanized to weather the elements. The main pipe mount is 3' long to give you greater diversity in installing the antenna to the structure.

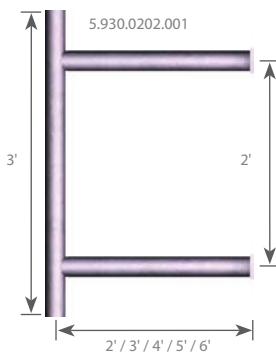
Four optional backing assemblies are available to attach to most tower legs. The standard 'small' backing assembly allows attachment to round legs up to 4 $\frac{1}{2}$ " OD. The 'medium' backing assembly can attach to round legs from 1" to 5 $\frac{5}{8}$ " OD or 60° angle legs up to 6" in size. The 'large' backing assembly can attach to round legs ranging from 1 $\frac{1}{2}$ " to 11" OD, or 60° and 90° angles up to 8" in size. To accommodate additional possibilities such as tapered towers, the last option is our 'universal' backing assembly that has the same capabilities of the large backing assembly plus the ability to mount standoffs to either vertical tower legs or tapered tower legs up to 10° (1 in 6) slope.

All material hot dip galvanized to weather the elements.



#### Quick Guide

Size	2' to 6' Light Standoffs	Mounts to	Up to 11" OD Legs Tapered or Vertical
Design	One piece welded frame	Material	Hot dip galvanized steel
Feature	2 $\frac{3}{8}$ " x 3' Mounting Pipe	Order Separately	Tie-Backs, page 11 for extra support



**Trylon** 21 South Field Drive, Elmira, ON N3B 0A6

P: 519.669.5421 F: 519.669.8912 E: info@trylon.com W: www.trylon.com



## Antenna Mounts

### Light Standoff Mounts continued

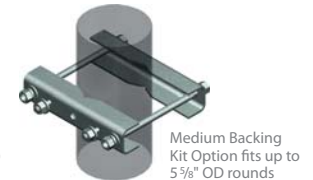
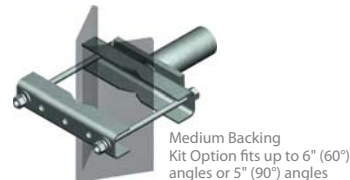
Kit #	Description	Qty	List Price	Wt
<b>Light - 2' Standoff</b>				
5.930.0202.001	S200L - 2' Standoff No Mounting Hardware	Ea	\$143	31
5.930.0202.002	S200L - 2' Standoff With Small Backing Kits	Ea	\$184	36
5.930.0202.007	S200L - 2' Standoff With Medium Backing Kits	Ea	\$242	46
5.930.0202.012	S200L - 2' Standoff With Large Backing Kits	Ea	\$272	53
5.930.0202.022	S200L - 2' Standoff With Universal Backing Kits	Ea	\$317	56

Kit #	Description	Qty	List Price	Wt
<b>Light - 3' Standoff</b>				
5.930.0203.001	S300L - 3' Standoff No Mounting Hardware	Ea	\$152	39
5.930.0203.002	S300L - 3' Standoff With Small Backing Kits	Ea	\$191	44
5.930.0203.007	S300L - 3' Standoff With Medium Backing Kits	Ea	\$245	54
5.930.0203.012	S300L - 3' Standoff With Large Backing Kits	Ea	\$274	61
5.930.0203.022	S300L - 3' Standoff With Universal Backing Kits	Ea	\$316	64

Kit #	Description	Qty	List Price	Wt
<b>Light - 4' Standoff</b>				
5.930.0204.001	S400L - 4' Standoff No Mounting Hardware	Ea	\$182	54
5.930.0204.002	S400L - 4' Standoff With Small Backing Kits	Ea	\$216	59
5.930.0204.007	S400L - 4' Standoff With Medium Backing Kits	Ea	\$264	69
5.930.0204.012	S400L - 4' Standoff With Large Backing Kits	Ea	\$289	76
5.930.0204.022	S400L - 4' Standoff With Universal Backing Kits	Ea	\$325	79

Kit #	Description	Qty	List Price	Wt
<b>Light - 5' Standoff</b>				
5.930.0205.001	S500L - 5' Standoff No Mounting Hardware	Ea	\$212	62
5.930.0205.002	S500L - 5' Standoff With Small Backing Kits	Ea	\$248	67
5.930.0205.007	S500L - 5' Standoff With Medium Backing Kits	Ea	\$299	76
5.930.0205.012	S500L - 5' Standoff With Large Backing Kits	Ea	\$326	84
5.930.0205.022	S500L - 5' Standoff With Universal Backing Kits	Ea	\$365	87

- Notes: 1. Small Backing Kits fit up to 4½" OD rounds.  
 2. Medium Backing Kits fit up to 5½" OD rounds and 6" (60°) angles.  
 3. Large Backing Kits fit up to 11" OD rounds and 8" angles.  
 4. Universal Backing Kits fit up to 11" OD rounds and 8" angles, and can be mounted vertically or up to a 10° (1 in 6) tapered leg.



Kit #	Description	Qty	List Price	Wt
<b>Light - 6' Standoff</b>				
5.930.0206.001	S600L - 6' Standoff No Mounting Hardware	Ea	\$236	69
5.930.0206.002	S600L - 6' Standoff With Small Backing Kits	Ea	\$273	74
5.930.0206.007	S600L - 6' Standoff With Medium Backing Kits	Ea	\$326	84
5.930.0206.012	S600L - 6' Standoff With Large Backing Kits	Ea	\$354	91
5.930.0206.022	S600L - 6' Standoff With Universal Backing Kits	Ea	\$394	94

- Notes: 1. Small Backing Kits fit up to 4½" OD rounds.  
 2. Medium Backing Kits fit up to 5½" OD rounds and 6" (60°) angles.  
 3. Large Backing Kits fit up to 11" OD rounds and 8" angles.  
 4. Universal Backing Kits fit up to 11" OD rounds and 8" angles, and can be mounted vertically or up to a 10° (1 in 6) tapered leg.

## Antenna Mounts

### Medium Standoff Mounts

Medium Standoff Mounts are offered in three sizes (1', 2' and 3') to suit your specific application. Its versatile 3½" OD x 52" long pipe is heavy enough to accommodate small dishes and most wireless or panel antennas.

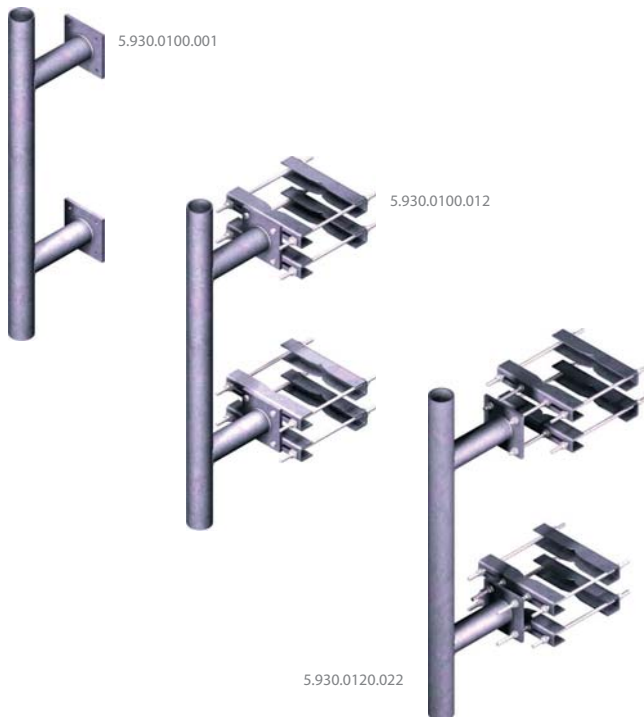
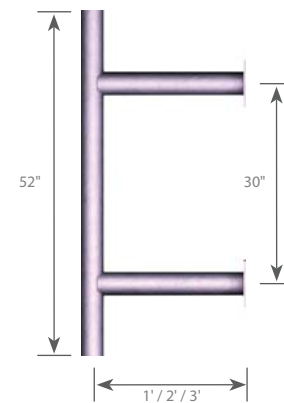
Tapered standoffs are available for industry standard 3° (1 in 20) tower structures, while universal backing hardware options can be purchased to accommodate tapered legs up to 8° (1 in 7 slope). Tie-Back assemblies are available on pages 11 to 13 for when antenna orientation is critical for your system.

The standard 'small' backing assembly allows attachment to round legs up to 4½" OD. The 'medium' backing assembly can attach to round legs up to 5⅝" OD or 60° angle legs up to 6" in size. The 'large' backing assembly can be attached to round legs ranging from 1½" to 11" OD, or 60° and 90° angles up to 8" in size.

Another option is the 'universal' backing assembly which can accommodate round legs up to 11" OD or angles up to 8°. It offers the unique ability to mount standoffs to either vertical tower legs or tapered tower legs up to 8° (1 in 7) slope.

#### Quick Guide

Size	1', 2', and 3' Medium Standoffs	Mounts to	Up to 11" OD Legs Tapered or Vertical
Design	One piece welded frame	Material	Hot dip galvanized steel
Feature	3½" x 52" Mounting Pipe	Order Separately	Tie-Backs on pages 11 to 13



Kit #	Description	Qty	List Price	Wt
<b>Medium - 1' Standoff (vertical)</b>				
5.930.0100.001	S100M-V: 1' Vertical Standoff No Mounting Hardware	Ea	\$200	61
5.930.0100.002	S100M-V: 1' Vertical Standoff Includes Small Backing Kits	Ea	\$272	71
5.930.0100.007	S100M-V: 1' Vertical Standoff Includes Medium Backing Kits	Ea	\$374	90
5.930.0100.012	S100M-V: 1' Vertical Standoff Includes Large Backing Kits	Ea	\$428	105
<b>Medium - 1' Standoff (tapered)</b>				
5.930.0101.001	S100M-T: 1' Tapered Standoff No Mounting Hardware	Ea	\$203	62
5.930.0101.002	S100M-T: 1' Tapered Standoff Includes Small Backing Kits	Ea	\$275	72
5.930.0101.007	S100M-T: 1' Tapered Standoff Includes Medium Backing Kits	Ea	\$377	91
5.930.0101.012	S100M-T: 1' Tapered Standoff Includes Large Backing Kits	Ea	\$431	106
<b>Medium - 1' Standoff (universal)</b>				
5.930.0120.022	S100M-U: 1' Vertical Standoff Includes Universal Backing Kits	Ea	\$540	111

- Notes: 1. Small Backing Kits fit up to 4½" OD rounds.  
 2. Medium Backing Kits fit up to 5⅝" OD rounds and 6" (60°) angles.  
 3. Large Backing Kits fit up to 11" OD rounds and 8" angles.  
 4. Universal Backing Kits fit up to 11" OD rounds and 8" angles, and can be mounted vertically or up to a 8° (1 in 7) tapered leg.

**Trylon** 21 South Field Drive, Elmira, ON N3B 0A6

P: 519.669.5421 F: 519.669.8912 E: info@trylon.com W: www.trylon.com

## Antenna Mounts

### Medium Standoff Mounts continued



5.930.0102.001  
2' Vertical Standoff  
no mounting hardware



5.930.0105.002  
3' Tapered Standoff with  
Small Backing Kits



5.930.0122.022  
2' Standoff with  
Universal Backing Kits

Universal Backing Kit is capable of attaching to vertical or tapered legs up to 11" in size



5.930.0103.007  
2' Tapered Standoff with  
Medium Backing Kits



5.930.0104.012  
3' Vertical Standoff with  
Large Backing Kits



5.930.0124.022  
3' Standoff with  
Universal Backing Kits

Kit #	Description	Qty	List Price	Wt
<b>Medium - 2' Standoff (vertical)</b>				
5.930.0102.001	S200M-V: 2' Vertical Standoff No Mounting Hardware	Ea	\$234	77
5.930.0102.002	S200M-V: 2' Vertical Standoff Includes Small Backing Kits	Ea	\$306	87
5.930.0102.007	S200M-V: 2' Vertical Standoff Includes Medium Backing Kits	Ea	\$408	106
5.930.0102.012	S200M-V: 2' Vertical Standoff Includes Large Backing Kits	Ea	\$462	121
<b>Medium - 2' Standoff (tapered)</b>				
5.930.0103.001	S200M-T: 2' Tapered Standoff No Mounting Hardware	Ea	\$237	78
5.930.0103.002	S200M-T: 2' Tapered Standoff Includes Small Backing Kits	Ea	\$309	88
5.930.0103.007	S200M-T: 2' Tapered Standoff Includes Medium Backing Kits	Ea	\$411	107
5.930.0103.012	S200M-T: 2' Tapered Standoff Includes Large Backing Kits	Ea	\$465	122
<b>Medium - 2' Standoff (universal)</b>				
5.930.0122.022	S200M-U: 2' Vertical Standoff Includes Universal Backing Kits	Ea	\$576	127

- Notes: 1. Small Backing Kits fit up to 4½" OD rounds.  
2. Medium Backing Kits fit up to 5½" OD rounds and 6" (60°) angles.  
3. Large Backing Kits fit up to 11" OD rounds and 8" angles.  
4. Universal Backing Kits fit up to 11" OD rounds and 8" angles, and can be mounted vertically or up to a 8° (1 in 7) tapered leg.

Kit #	Description	Qty	List Price	Wt
<b>Medium - 3' Standoff (vertical)</b>				
5.930.0104.001	S300M-V: 3' Vertical Standoff No Mounting Hardware	Ea	\$298	101
5.930.0104.002	S300M-V: 3' Vertical Standoff Includes Small Backing Kits	Ea	\$367	111
5.930.0104.007	S300M-V: 3' Vertical Standoff Includes Medium Backing Kits	Ea	\$466	131
5.930.0104.012	S300M-V: 3' Vertical Standoff Includes Large Backing Kits	Ea	\$518	145
<b>Medium - 3' Standoff (tapered)</b>				
5.930.0105.001	S300M-T: 3' Tapered Standoff No Mounting Hardware	Ea	\$301	102
5.930.0105.002	S300M-T: 3' Tapered Standoff Includes Small Backing Kits	Ea	\$370	112
5.930.0105.007	S300M-T: 3' Tapered Standoff Includes Medium Backing Kits	Ea	\$469	132
5.930.0105.012	S300M-T: 3' Tapered Standoff Includes Large Backing Kits	Ea	\$521	146
<b>Medium - 3' Standoff (universal)</b>				
5.930.0124.022	S300M-U: 3' Vertical Standoff Includes Universal Backing Kits	Ea	\$655	151

- Notes: 1. Small Backing Kits fit up to 4½" OD rounds.  
2. Medium Backing Kits fit up to 5½" OD rounds and 6" (60°) angles.  
3. Large Backing Kits fit up to 11" OD rounds and 8" angles.  
4. Universal Backing Kits fit up to 11" OD rounds and 8" angles, and can be mounted vertically or up to a 8° (1 in 7) tapered leg.



## Antenna Mounts

### Heavy Standoff Mounts

These Heavy Standoff Mounts are second to none. They are capable of holding large 12' microwave dishes under the most extreme wind speeds. The 4½" OD mounting pipe is available in two lengths, 6' and 8', and in the different offsets, 1' and 2'.

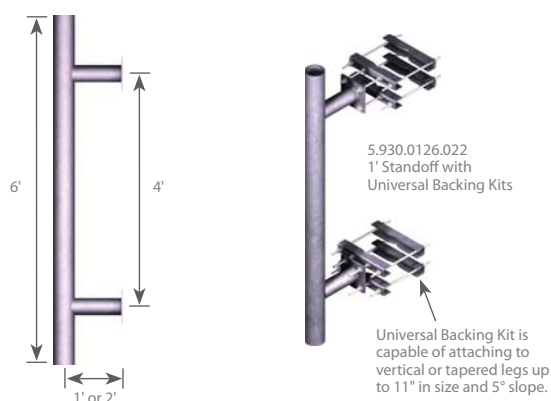
The standoffs are available as a vertical tower attachment, or as a 3° (1 in 20) tapered tower attachment. If the site-specific information is unavailable on whether a tower leg is vertical or not, then purchase the universal backing hardware as it allows installation on structures from 0° to 3° in slope, and can accommodate up to 11" OD rounds or 8" angles.

Standard backing assemblies are available in three sizes, small, medium or large. The small backing assembly can attach to round legs up to 4½" OD. The 'medium' backing assembly can attach to round legs up to 5½" OD or 60° angle legs up to 6" in size. The large backing assembly can attach to round legs ranging from 1½" to 11" OD, or 60° and 90° angle legs up to 8" in size.

Tie-backs are available on pages 11 to 13 to provide additional mount or antenna stability, and are recommended for extreme wind or heavy loading conditions.

#### Quick Guide

Size	1' or 2' Large Standoff	Mounts to	Up to 11" OD Legs Tapered or Vertical
Design	One piece welded frame	Material	Hot dip galvanized steel
Feature	4½" x 6' or 8'	Order Separately	Tie-Backs on pages 11 to 13



Kit #	Description	Qty	List Price	Wt
<b>Heavy - 1' Standoff with 4½" x 6' Pipe (vertical)</b>				
5.930.0106.001	S100H-6V: 1' Vertical Standoff No Mounting Hardware	Ea	\$293	93
5.930.0106.002	S100H-6V: 1' Vertical Standoff Includes Small Backing Kits	Ea	\$370	103
5.930.0106.007	S100H-6V: 1' Vertical Standoff Includes Medium Backing Kits	Ea	\$479	123
5.930.0106.012	S100H-6V: 1' Vertical Standoff Includes Large Backing Kits	Ea	\$536	137
<b>Heavy - 1' Standoff with 4½" x 6' Pipe (tapered)</b>				
5.930.0107.001	S100H-6T: 1' Tapered Standoff No Mounting Hardware	Ea	\$296	95
5.930.0107.002	S100H-6T: 1' Tapered Standoff Includes Small Backing Kits	Ea	\$373	105
5.930.0107.007	S100H-6T: 1' Tapered Standoff Includes Medium Backing Kits	Ea	\$482	125
5.930.0107.012	S100H-6T: 1' Tapered Standoff Includes Large Backing Kits	Ea	\$540	139
<b>Heavy - 1' Standoff with 4½" x 6' Pipe (universal)</b>				
5.930.0126.022	S100H-6U: 1' Vertical Standoff Includes Universal Backing Kits	Ea	\$620	143

- Notes: 1. Small Backing Kits fit up to 4½" OD rounds.  
2. Medium Backing Kits fit up to 5½" OD rounds and 6" (60°) angles.  
3. Large Backing Kits fit up to 11" OD rounds and 8" angles.  
4. Universal Backing Kits fit up to 11" OD rounds and 8" angles, and can be mounted vertically or up to a 5° (1 in 12) tapered leg.

Kit #	Description	Qty	List Price	Wt
<b>Heavy - 2' Standoff with 4½" x 6' Pipe (vertical)</b>				
5.930.0110.001	S200H-6V: 2' Vertical Standoff No Mounting Hardware	Ea	\$308	109
5.930.0110.002	S200H-6V: 2' Vertical Standoff Includes Small Backing Kits	Ea	\$380	119
5.930.0110.007	S200H-6V: 2' Vertical Standoff Includes Medium Backing Kits	Ea	\$482	138
5.930.0110.012	S200H-6V: 2' Vertical Standoff Includes Large Backing Kits	Ea	\$536	153
<b>Heavy - 2' Standoff with 4½" x 6' Pipe (tapered)</b>				
5.930.0111.001	S200H-6T: 2' Tapered Standoff No Mounting Hardware	Ea	\$312	111
5.930.0111.002	S200H-6T: 2' Tapered Standoff Includes Small Backing Kits	Ea	\$384	121
5.930.0111.007	S200H-6T: 2' Tapered Standoff Includes Medium Backing Kits	Ea	\$486	140
5.930.0111.012	S200H-6T: 2' Tapered Standoff Includes Large Backing Kits	Ea	\$540	155
<b>Heavy - 2' Standoff with 4½" x 6' Pipe (universal)</b>				
5.930.0130.022	S200H-6U: 2' Vertical Standoff Includes Universal Backing Kits	Ea	\$614	159

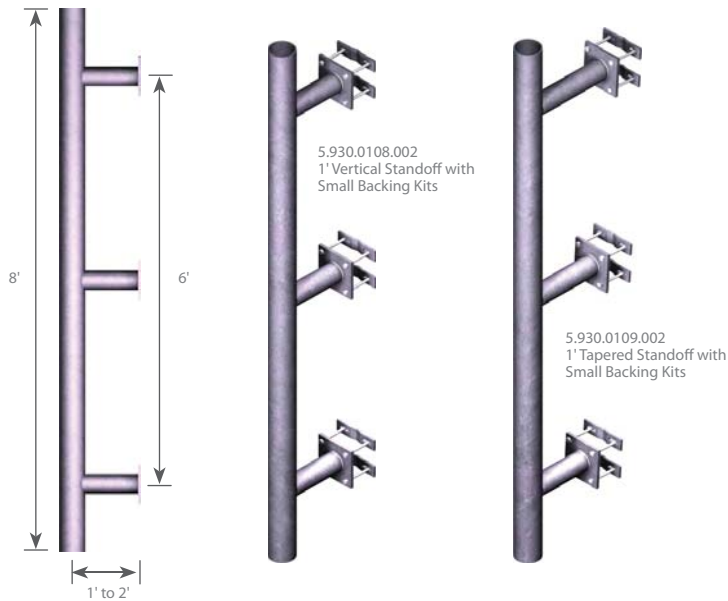
- Notes: 1. Small Backing Kits fit up to 4½" OD rounds.  
2. Medium Backing Kits fit up to 5½" OD rounds and 6" (60°) angles.  
3. Large Backing Kits fit up to 11" OD rounds and 8" angles.  
4. Universal Backing Kits fit up to 11" OD rounds and 8" angles, and can be mounted vertically or up to a 5° (1 in 12) tapered leg.

**Trylon** 21 South Field Drive, Elmira, ON N3B 0A6

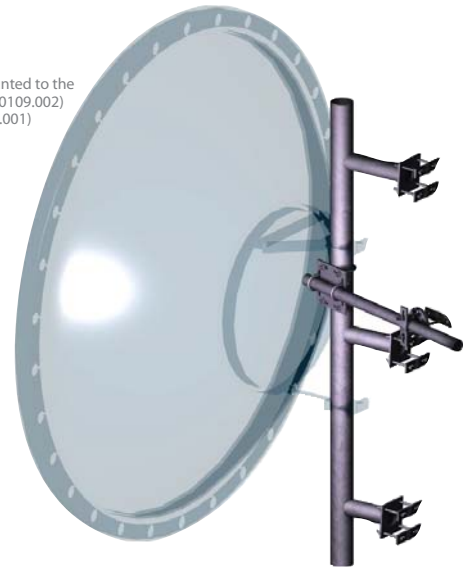
P: 519.669.5421 F: 519.669.8912 E: info@trylon.com W: www.trylon.com

## Antenna Mounts

### Heavy Standoff Mounts continued



Illustrated is a 12' Dish mounted to the Heavy Duty Standoff (5.930.0109.002) and 4' Tie-Back (5.963.0004.001)



Kit #	Description	Qty	List Price	Wt
<b>Heavy - 1' Standoff with 4½" x 8' Pipe (vertical)</b>				
5.930.0108.001	S100H-8V: 1' Vertical Standoff No Mounting Hardware	Ea	\$370	128
5.930.0108.002	S100H-8V: 1' Vertical Standoff Includes Small Backing Kits	Ea	\$475	143
5.930.0108.007	S100H-8V: 1' Vertical Standoff Includes Medium Backing Kits	Ea	\$623	173
5.930.0108.012	S100H-8V: 1' Vertical Standoff Includes Large Backing Kits	Ea	\$701	194
<b>Heavy - 1' Standoff with 4½" x 8' Pipe (tapered)</b>				
5.930.0109.001	S100H-8T: 1' Tapered Standoff No Mounting Hardware	Ea	\$377	132
5.930.0109.002	S100H-8T: 1' Tapered Standoff Includes Small Backing Kits	Ea	\$482	147
5.930.0109.007	S100H-8T: 1' Tapered Standoff Includes Medium Backing Kits	Ea	\$630	177
5.930.0109.012	S100H-8T: 1' Tapered Standoff Includes Large Backing Kits	Ea	\$708	198
<b>Heavy - 1' Standoff with 4½" x 8' Pipe (universal)</b>				
5.930.0128.022	S100H-8U: 1' Vertical Standoff Includes Universal Backing Kits	Ea	\$898	203

- Notes: 1. Small Backing Kits fit up to 4½" OD rounds.  
 2. Medium Backing Kits fit up to 5½" OD rounds and 6" (60°) angles.  
 3. Large Backing Kits fit up to 11" OD rounds and 8" angles.  
 4. Universal Backing Kits fit up to 11" OD rounds and 8" angles, and can be mounted vertically or up to a 3° (1 in 20) tapered leg.

Kit #	Description	Qty	List Price	Wt
<b>Heavy - 2' Standoff with 4½" x 8' Pipe (vertical)</b>				
5.930.0112.001	S200H-8V: 2' Vertical Standoff No Mounting Hardware	Ea	\$420	152
5.930.0112.002	S200H-8V: 2' Vertical Standoff Includes Small Backing Kits	Ea	\$524	167
5.930.0112.007	S200H-8V: 2' Vertical Standoff Includes Medium Backing Kits	Ea	\$588	181
5.930.0112.012	S200H-8V: 2' Vertical Standoff Includes Large Backing Kits	Ea	\$750	218
<b>Heavy - 2' Standoff with 4½" x 8' Pipe (tapered)</b>				
5.930.0113.001	S200H-8T: 2' Tapered Standoff No Mounting Hardware	Ea	\$428	156
5.930.0113.002	S200H-8T: 2' Tapered Standoff Includes Small Backing Kits	Ea	\$533	171
5.930.0113.007	S200H-8T: 2' Tapered Standoff Includes Medium Backing Kits	Ea	\$596	186
5.930.0113.012	S200H-8T: 2' Tapered Standoff Includes Large Backing Kits	Ea	\$759	222
<b>Heavy - 2' Standoff with 4½" x 8' Pipe (universal)</b>				
5.930.0132.022	S200H-8U: 2' Vertical Standoff Includes Universal Backing Kits	Ea	\$952	227

- Notes: 1. Small Backing Kits fit up to 4½" OD rounds.  
 2. Medium Backing Kits fit up to 5½" OD rounds and 6" (60°) angles.  
 3. Large Backing Kits fit up to 11" OD rounds and 8" angles.  
 4. Universal Backing Kits fit up to 11" OD rounds and 8" angles, and can be mounted vertically or up to a 3° (1 in 20) tapered leg.

## Antenna Mounts

### Fixed Crossover Assemblies

These versatile pipe-pipe assemblies are used to secure two pipes at right angles (90°) to each other. Each kit contains a connection plate and four u-bolt assemblies. All parts are hot dip galvanized for maximum corrosion protection.

Quick Guide			
Size	10 Variations	Mounts to	See table below
Design	Pipe to Pipe connections	Material	Hot dip galvanized steel
Feature	Versatility in options	Order Separately	Pipes, page 93



5.960.0002.001



5.960.0003.001



5.960.0004.001

Kit #	Description	Qty	List Price	Wt
<b>Small Fixed Crossover Assembly</b>				
5.960.0002.001	Crossover Kit and four u-bolts fit 2 3/8" OD to 2 3/8" OD pipes	Ea	\$50	7.9
<b>Medium Fixed Crossover Assemblies</b>				
5.960.0003.001	Crossover Kit and four u-bolts fit 3 1/2" OD to 3 1/2" OD pipes	Ea	\$63	9.5
5.960.0003.002	Crossover Kit and four u-bolts fit 2 7/8" OD to 3 1/2" OD pipes	Ea	\$61	9.5
5.960.0003.003	Crossover Kit and four u-bolts fit 2 3/8" OD to 3 1/2" OD pipes	Ea	\$57	9.3
5.960.0003.004	Crossover Kit and four u-bolts fit 2 7/8" OD to 2 7/8" OD pipes	Ea	\$59	9.5
5.960.0003.005	Crossover Kit and four u-bolts fit 2 3/8" OD to 2 7/8" OD pipes	Ea	\$56	9.3
<b>Large Fixed Crossover Assemblies</b>				
5.960.0004.001	Crossover Kit and four u-bolts fit 4 1/2" OD to 4 1/2" OD pipes	Ea	\$76	13.0
5.960.0004.002	Crossover Kit and four u-bolts fit 3 1/2" OD to 4 1/2" OD pipes	Ea	\$74	12.0
5.960.0004.003	Crossover Kit and four u-bolts fit 2 7/8" OD to 4 1/2" OD pipes	Ea	\$72	12.0
5.960.0004.004	Crossover Kit and four u-bolts fit 2 3/8" OD to 4 1/2" OD pipes	Ea	\$68	12.0

Notes: 1. 2 3/8" OD pipe can be exchanged for a 1 7/8" OD pipe.  
2. 2 7/8" OD pipe can be exchanged for a 3" OD pipe.

### Universal Crossover Assemblies

The universal crossover assemblies are commonly used to secure two members (such as pipes, angles, or hss) at angles ranging from 45° to 90°. Depending on the kit, attachment sizes can range from 3/4" OD up to 11" OD. All parts are hot dip galvanized to provide corrosion protection in all environmental conditions.

Please note that OD means "outer diameter," and can be used for any structural member that falls within the size given.

Quick Guide			
Size	5 Variations	Mounts to	See table below
Design	Pipe to Pipe, or any member connection	Material	Hot dip galvanized steel
Feature	Adjustability ranging from 45° to 90°	Order Separately	Pipes, page 93



5.960.0005.001



5.960.0005.001 shown with two 3 1/2" pipes



5.960.0005.002



5.960.0005.003

Kit #	Description	Qty	List Price	Wt
<b>Universal Crossover Assemblies</b>				
5.960.0005.002	Universal Kit and Hardware can fit two members up to 4 1/2" OD	Ea	\$70	11.0
5.960.0005.003	Universal Kit and Hardware can fit two members up to 5 3/8" OD	Ea	\$128	21.0
5.960.0005.004	Universal Kit and Hardware can fit two members up to 8" OD	Ea	\$132	22.0
5.960.0005.005	Universal Kit and Hardware can fit two members up to 11" OD	Ea	\$153	28.0

Note: Members can be pipes, angles, or other members of equivalent or smaller size.

## Antenna Mounts

### Hybrid Crossover Assemblies

The hybrid crossover assemblies connect standard pipes (2 $\frac{3}{8}$ ", 2 $\frac{7}{8}$ ", 3 $\frac{1}{2}$ ", and 4 $\frac{1}{2}$ " OD) to other structural members (such as angles, pipes, or hss) using the adjustable backing portion of the assembly. The small assemblies attach these pipes to other members up to 4 $\frac{1}{2}$ " OD, while the standard and large assemblies attach to other members up to 11" OD members in size.

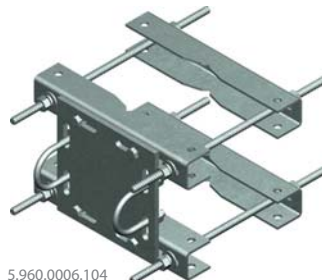
All pieces are hot dip galvanized.



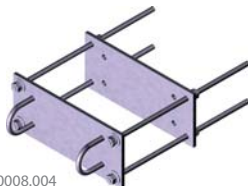
5.960.0006.001


5.960.0006.004  
shown with pipe  
and angle

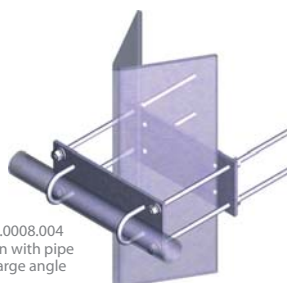

5.960.0006.102



5.960.0006.104



5.960.0008.004


5.960.0008.004  
shown with pipe  
and large angle

#### Quick Guide

Size	11 Variations	Mounts to	See table below
Design	Pipe to various member connections	Material	Hot dip galvanized steel
Feature	Versatility to attach to pipes, angles, etc.	Order Separately	Pipes, page 93

Kit #	Description	Qty	List Price	Wt
<b>Small Hybrid Crossover Assemblies</b>				
5.960.0006.001	Crossover Kit and hardware fits 4 $\frac{1}{2}$ " OD pipe up to 4 $\frac{1}{2}$ " OD members	Ea	\$80	16
5.960.0006.002	Crossover Kit and hardware fits 3 $\frac{1}{2}$ " OD pipe up to 4 $\frac{1}{2}$ " OD members	Ea	\$78	15
5.960.0006.003	Crossover Kit and hardware fits 2 $\frac{7}{8}$ " OD pipe up to 4 $\frac{1}{2}$ " OD members	Ea	\$76	15
5.960.0006.004	Crossover Kit and hardware fits 2 $\frac{3}{8}$ " OD pipe up to 4 $\frac{1}{2}$ " OD members	Ea	\$73	15
<b>Standard Hybrid Crossover Assemblies</b>				
5.960.0006.102	Crossover Kit and hardware fits 3 $\frac{1}{2}$ " OD pipe up to 11" OD members	Ea	\$155	32
5.960.0006.103	Crossover Kit and hardware fits 2 $\frac{7}{8}$ " OD pipe up to 11" OD members	Ea	\$154	32
5.960.0006.104	Crossover Kit and hardware fits 2 $\frac{3}{8}$ " OD pipe up to 11" OD members	Ea	\$151	32
<b>Large Hybrid Crossover Assemblies</b>				
5.960.0008.001	Crossover Kit and hardware fits 4 $\frac{1}{2}$ " OD pipe up to 11" OD members	Ea	\$134	28
5.960.0008.002	Crossover Kit and hardware fits 3 $\frac{1}{2}$ " OD pipe up to 11" OD members	Ea	\$132	28
5.960.0008.003	Crossover Kit and hardware fits 2 $\frac{7}{8}$ " OD pipe up to 11" OD members	Ea	\$123	25
5.960.0008.004	Crossover Kit and hardware fits 2 $\frac{3}{8}$ " OD pipe up to 11" OD member	Ea	\$119	25

- Notes: 1. Examples of 4 $\frac{1}{2}$ " OD members are 4" (60°) angles, 3" (90°) angles, or 4 $\frac{1}{2}$ " hss members.  
2. 2 $\frac{3}{8}$ " OD pipe can be exchanged for a 1 $\frac{7}{8}$ " OD pipe.  
3. 2 $\frac{7}{8}$ " OD pipe can be exchanged for a 3" OD pipe.



## Antenna Mounts

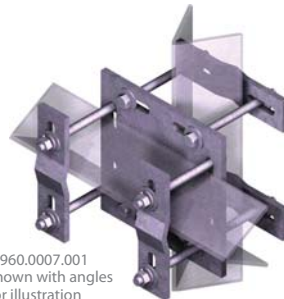
### Adjustable Crossover Assembly

The Adjustable Crossover Assembly can mate two variable-sized structural members at 90°. The maximum size of the members is 4¾" wide by 4½" deep. This is very useful when the required member size connection is unknown.

5.960.0007.001



5.960.0007.001  
shown with angles  
for illustration

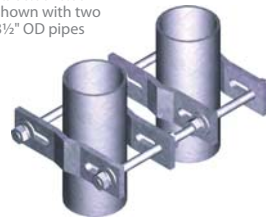


Kit #	Description	Qty	List Price	Wt
<b>Adjustable Crossover Assembly</b>				
5.960.0007.001	Crossover Kit and hardware can fit up to 4" (60°) angles, 4½" OD pipes or other members 4¾" wide by 4½" deep	Ea	\$121	19

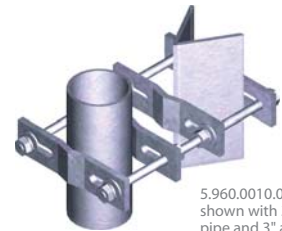
### Adjustable Parallel Clamp Assemblies

The Adjustable Parallel Clamp Assemblies allows parallel connection of two similar- or dissimilar-sized members. For sizing please review the figures on page 101 and 102 near the back of this catalog. All material is hot dip galvanized.

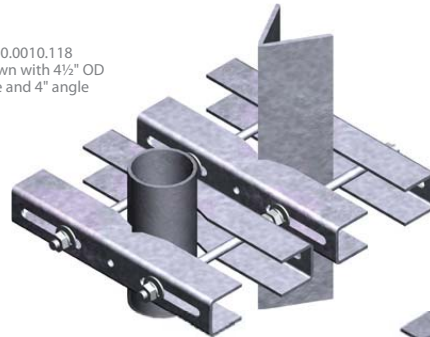
5.960.0010.001  
shown with two  
3½" OD pipes



5.960.0010.001  
shown with 3½" OD  
pipe and 3" angle



5.960.0010.118  
shown with 4½" OD  
pipe and 4" angle



5.960.0010.124  
shown with two  
5⅝" OD pipes

Kit #	Description	Qty	List Price	Wt
<b>Adjustable Parallel Clamp Assembly</b>				
5.960.0010.001	Adjustable Parallel Kit	Ea	\$60	8.5
5.960.0010.018	Medium (18") Adjustable Parallel Kit	Ea	\$77	14.0
5.960.0010.024	Medium (24") Adjustable Parallel Kit	Ea	\$78	15.0
5.960.0010.118	Large (18") Adjustable Parallel Kit	Ea	\$95	20.0
5.960.0010.124	Large (24") Adjustable Parallel Kit	Ea	\$96	20.0
5.960.0010.226	Extra Large (26") Adjustable Parallel Kit	Ea	\$101	18.0
5.960.0010.231	Extra Large (31") Adjustable Parallel Kit	Ea	\$104	19.0

Note: See page 101 and 102 for appropriate usage.

**Trylon** 21 South Field Drive, Elmira, ON N3B 0A6

P: 519.669.5421 F: 519.669.8912 E: info@trylon.com W: www.trylon.com

## Antenna Mounts

### Tie-Back Assemblies

Tie-back Assemblies are commonly used to stabilize antennas and maintain critical azimuth orientation. They are highly recommended with any antenna mount that has a large antenna or separation, and in high wind or heavy ice conditions.

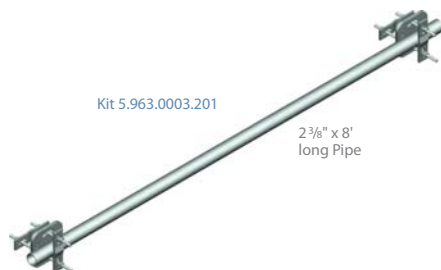
An assortment of 2 $\frac{3}{8}$ " OD tie-backs are offered that meet almost any field application. The two key factors in determining the correct tie-back assembly are the overall length required and the attachments at either end. All material is hot dip galvanized.



Kit #	Description	Qty	List Price	Wt
<b>Typical T-Frame Tie-Back Assemblies</b>				
5.963.0003.001	8' long, with up to 3 $\frac{1}{2}$ " OD adjustability at each end	Ea	\$208	50
5.963.0003.002	12' long, with up to 3 $\frac{1}{2}$ " OD adjustability at each end	Ea	\$240	65
5.963.0003.003	15' long, with up to 3 $\frac{1}{2}$ " OD adjustability at each end	Ea	\$264	76



Kit #	Description	Qty	List Price	Wt
<b>Typical T-Frame Tie-Back Assemblies</b>				
5.963.0003.101	8' long, with adjustability up to 3 $\frac{1}{2}$ " OD at one end, and up to 4 $\frac{1}{2}$ " OD at the other end	Ea	\$212	51
5.963.0003.102	12' long, with adjustability up to 3 $\frac{1}{2}$ " OD at one end, and up to 4 $\frac{1}{2}$ " OD at the other end	Ea	\$244	66
5.963.0003.103	15' long, with adjustability up to 3 $\frac{1}{2}$ " OD at one end, and up to 4 $\frac{1}{2}$ " OD at the other end	Ea	\$269	78



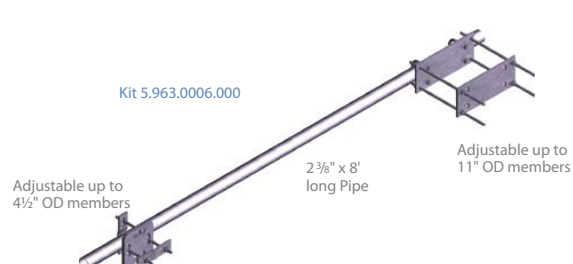
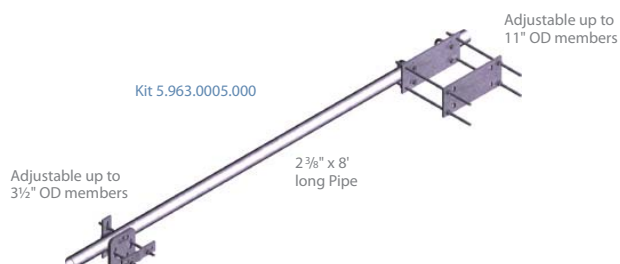
Kit #	Description	Qty	List Price	Wt
<b>Typical T-Frame Tie-Back Assemblies</b>				
5.963.0003.201	8' long, with up to 4 $\frac{1}{2}$ " OD adjustability at each end	Ea	\$217	52
5.963.0003.202	12' long, with up to 4 $\frac{1}{2}$ " OD adjustability at each end	Ea	\$248	67
5.963.0003.203	15' long, with up to 4 $\frac{1}{2}$ " OD adjustability at each end	Ea	\$273	79



Kit #	Description	Qty	List Price	Wt
<b>Typical Standoff Tie-Back Assemblies</b>				
5.963.0004.001	4' long, with up to 3 $\frac{1}{2}$ " or 4 $\frac{1}{2}$ " OD fixed at one end, and up to 3 $\frac{1}{2}$ " OD adjustability at the other end	Ea	\$173	39
5.963.0004.002	6' long, with up to 3 $\frac{1}{2}$ " or 4 $\frac{1}{2}$ " OD fixed at one end, and up to 3 $\frac{1}{2}$ " OD adjustability at the other end	Ea	\$189	46
5.963.0004.003	8' long, with up to 3 $\frac{1}{2}$ " or 4 $\frac{1}{2}$ " OD fixed at one end, and up to 3 $\frac{1}{2}$ " OD adjustability at the other end	Ea	\$205	54

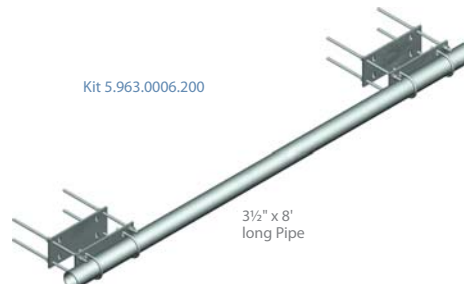
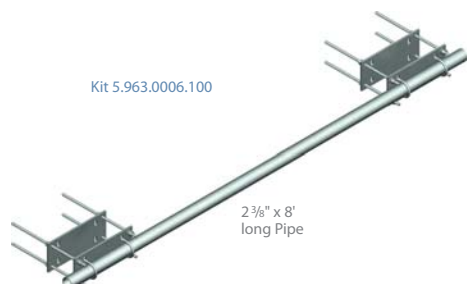
## Antenna Mounts

### Tie-Back Assemblies continued



Kit #	Description	Qty	List Price	Wt
Universal Tie-Back Assemblies (3 1/2" OD and 11" OD)				
5.963.0005.000	8' long, with adjustability up to 3 1/2" OD at one end, and up to 11" OD at the other end	Ea	\$264	65
5.963.0005.001	12' long, with adjustability up to 3 1/2" OD at one end, and up to 11" OD at the other end	Ea	\$301	80
5.963.0005.002	15' long, with adjustability up to 3 1/2" OD at one end, and up to 11" OD at the other end	Ea	\$329	92
5.963.0005.003	20' long, with adjustability up to 3 1/2" OD at one end, and up to 11" OD at the other end	Ea	\$375	111

Kit #	Description	Qty	List Price	Wt
Universal Tie-Back Assemblies (4 1/2" OD and 11" OD)				
5.963.0006.000	8' long, with adjustability up to 4 1/2" OD at one end, and up to 11" OD at the other end	Ea	\$269	66
5.963.0006.001	12' long, with adjustability up to 4 1/2" OD at one end, and up to 11" OD at the other end	Ea	\$306	82
5.963.0006.002	15' long, with adjustability up to 4 1/2" OD at one end, and up to 11" OD at the other end	Ea	\$334	93
5.963.0006.003	20' long, with adjustability up to 4 1/2" OD at one end, and up to 11" OD at the other end	Ea	\$380	112



Kit #	Description	Qty	List Price	Wt
Universal Tie-Back Assemblies (11" OD and 11" OD)				
5.963.0006.100	8' long, with up to 11" OD adjustability at each end	Ea	\$289	81
5.963.0006.101	12' long, with up to 11" OD adjustability at each end	Ea	\$326	96
5.963.0006.102	15' long, with up to 11" OD adjustability at each end	Ea	\$354	107
5.963.0006.103	20' long, with up to 11" OD adjustability at each end	Ea	\$400	127

Kit #	Description	Qty	List Price	Wt
Universal Tie-Back Assemblies (11" OD and 11" OD)				
5.963.0006.200	3 1/2" x 8' long, with up to 11" OD adjustability at each end	Ea	\$380	114
5.963.0006.201	3 1/2" x 12' long, with up to 11" OD adjustability at each end	Ea	\$454	146
5.963.0006.202	3 1/2" x 5' long, with up to 11" OD adjustability at each end	Ea	\$512	170
5.963.0006.203	3 1/2" x 20' long, with up to 11" OD adjustability at each end	Ea	\$606	209

**Trylon** 21 South Field Drive, Elmira, ON N3B 0A6

P: 519.669.5421 F: 519.669.8912 E: info@trylon.com W: www.trylon.com

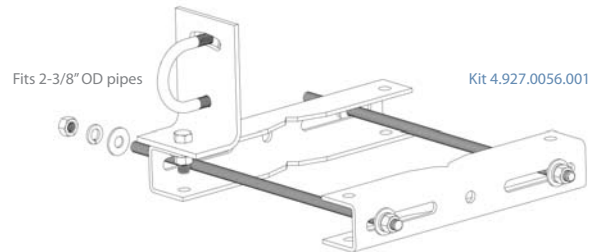


## Antenna Mounts

### Swivel Knuckle Tie-Back Assemblies

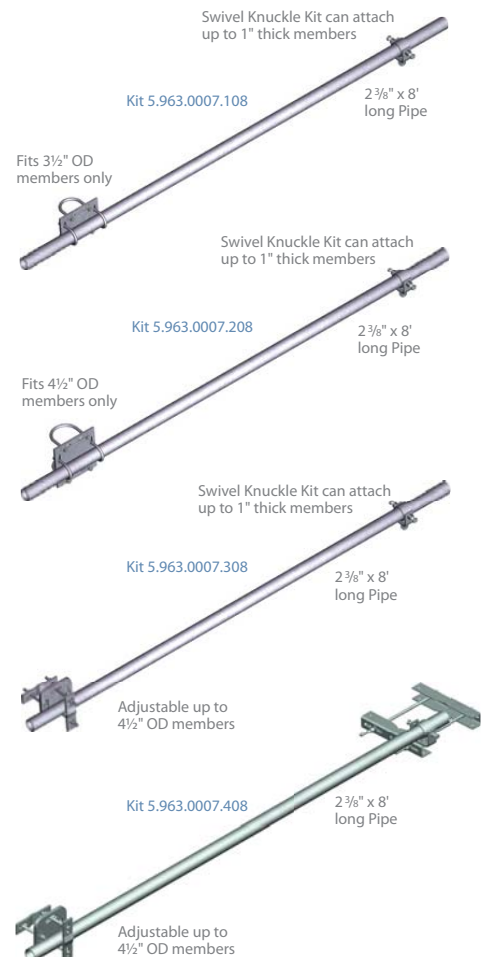
The Swivel Knuckle Tie-back Assemblies are similar to our standard tie-back connections, but has the capability of pivoting in virtually any direction at the swivel knuckle end.

This unique attachment comes with all necessary 1/2" hardware to stabilize a 2 3/8" OD pipe to a maximum 1" thick tower member. Also, we have kitted an assortment of standard 2 3/8" OD pipe lengths with certain specific crossover kits to meet almost any attachment scenario. All material is hot dip galvanized for maximum corrosion resistance.



Kit #	Description	Qty	List Price	Wt
<b>Swivel Knuckle Tie-Back Assemblies (with 3 1/2" Fixed Crossover)</b>				
5.963.0007.108	2 3/8" x 8' long pipe, comes with one Swivel Knuckle Kit, and one 3 1/2" Fixed Crossover Kit	Ea	\$167	44
5.963.0007.112	2 3/8" x 12' long pipe, comes with one Swivel Knuckle Kit, and one 3 1/2" Fixed Crossover Kit	Ea	\$203	59
5.963.0007.115	2 3/8" x 15' long pipe, comes with one Swivel Knuckle Kit, and one 3 1/2" Fixed Crossover Kit	Ea	\$231	71
5.963.0007.120	2 3/8" x 20' long pipe, comes with one Swivel Knuckle Kit, and one 3 1/2" Fixed Crossover Kit	Ea	\$278	90
<b>Swivel Knuckle Tie-Back Assemblies (with 4 1/2" Fixed Crossover)</b>				
5.963.0007.208	2 3/8" x 8' long pipe, comes with one Swivel Knuckle Kit, and one 4 1/2" Fixed Crossover Kit	Ea	\$174	46
5.963.0007.212	2 3/8" x 12' long pipe, comes with one Swivel Knuckle Kit, and one 4 1/2" Fixed Crossover Kit	Ea	\$210	62
5.963.0007.215	2 3/8" x 15' long pipe, comes with one Swivel Knuckle Kit, and one 4 1/2" Fixed Crossover Kit	Ea	\$238	73
5.963.0007.220	2 3/8" x 20' long pipe, comes with one Swivel Knuckle Kit, and one 4 1/2" Fixed Crossover Kit	Ea	\$284	92
<b>Swivel Knuckle Tie-Back Assemblies (with 4 1/2" Universal Crossover)</b>				
5.963.0007.308	2 3/8" x 8' long pipe, comes with one Swivel Knuckle Kit, and one 4 1/2" Universal Crossover Kit	Ea	\$200	45
5.963.0007.312	2 3/8" x 12' long pipe, comes with one Swivel Knuckle Kit, and one 4 1/2" Universal Crossover Kit	Ea	\$236	60
5.963.0007.315	2 3/8" x 15' long pipe, comes with one Swivel Knuckle Kit, and one 4 1/2" Universal Crossover Kit	Ea	\$264	72
5.963.0007.320	2 3/8" x 20' long pipe, comes with one Swivel Knuckle Kit, and one 4 1/2" Universal Crossover Kit	Ea	\$311	91
<b>Swivel Knuckle Tie-Back Assemblies (with 4 1/2" OD and 11" OD)</b>				
5.963.0007.408	2 3/8" x 8' long pipe, comes with one Swivel Knuckle Leg Kit, and one 4 1/2" Universal Crossover Kit	Ea	\$260	56
5.963.0007.412	2 3/8" x 12' long pipe, comes with one Swivel Knuckle Leg Kit, and one 4 1/2" Universal Crossover Kit	Ea	\$296	71
5.963.0007.415	2 3/8" x 15' long pipe, comes with one Swivel Knuckle Leg Kit, and one 4 1/2" Universal Crossover Kit	Ea	\$324	82
5.963.0007.420	2 3/8" x 20' long pipe, comes with one Swivel Knuckle Leg Kit, and one 4 1/2" Universal Crossover Kit	Ea	\$370	102

Kit #	Description	Qty	List Price	Wt
<b>Stabilizer Bracket</b>				
4.927.0056.001	Stabilizer Bracket Leg Kit fits standard 2-3/8" OD Pipes and includes Large Backing Assembly	Ea	\$152	20





## Antenna Mounts

### Backing Assemblies

Backing Assemblies can be purchased separately and will fit almost any standoff or plate configuration. All material is hot dip galvanized.

#### SMALL BACKING 'A' ASSEMBLY

Our smallest option comes with one 2" x 8" slotted plate and two 1/2" x 6" (full thread) Grade 5 bolts. When combined with the right mate these parts can attach up to 4 1/2" OD rounds. The slots can fit plates that have holes centered between 3 3/8" to 6 1/8".

#### SMALL BACKING 'B' ASSEMBLY

This option is similar to the above kit but comes standard with two 1/2" x 8" long threaded rods. When combined with the right mate, these parts can attach up to 5 5/8" OD rounds. The slots can fit holes centered between 3 3/8" to 6 1/8".

#### MEDIUM BACKING 'B' ASSEMBLY

This option comes with two medium channels, two 1/2" x 12" threaded rods and two 1/2" x 1 1/2" bolts. This assembly can fit mating plates up to 3/4" thick and with holes set at 5" or 8" centers. This kit will fit round members up to 5 5/8" and 6" (60°) angles in size.

#### LARGE BACKING 'B' ASSEMBLY

This option comes with two large slotted channels, two 1/2" x 18" threaded rods, and two 1/2" x 1 1/2" bolts. This assembly can fit mating plates up to 3/4" thick and with holes ranging from 4 3/4" to 12" on center. This kit will fit round members up to 11" OD and angles (60° or 90°) up to 8" in size.

#### UNIVERSAL MEDIUM BACKING ASSEMBLY

This assembly allows the vertical connection of two plates, even if they are not vertical to each other, and are most practical for tapered tower legs or when site information is limited. They have the same versatility of "B", but also include two 1/2" x 8" threaded rods that allow 4" maximum lateral panning capability.

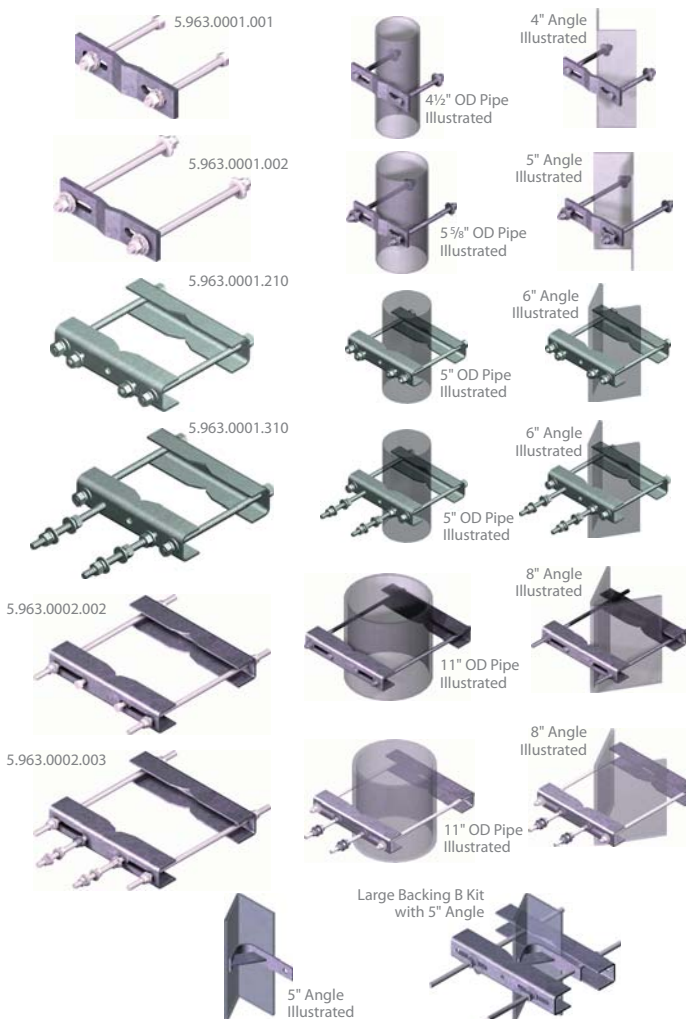
#### UNIVERSAL BACKING ASSEMBLY

This assembly allows the vertical connection of two plates, even if they are not vertical to each other, and are most practical for tapered tower legs or when site information is limited. They have the same versatility of "B", but also include two 1/2" x 8" threaded rods that allow 4" maximum lateral panning capability.

#### ANGLE INSERT

The angle insert adds the required strength for face-mount installation of large backing assemblies to smaller 3", 4", and 5" (60°) angles. Larger angles, such as 6" and 8" (60°) sizes, do not require this special add-on for face-mount applications.

Kit #	Description	Qty	List Price	Wt
<b>Backing Assemblies</b>				
5.963.0001.001	Small Backing 'A' Kit allows up to 4 1/2" OD pipes	Ea	\$22	2.5
5.963.0001.002	Small Backing 'B' Kit allows up to 5 5/8" OD pipes	Ea	\$26	3.1
5.963.0001.210	Medium Backing 'B' Kit allows up to 5 5/8" OD pipes or 6" (60°) angles	Ea	\$45	7.4
5.963.0001.310	Universal Medium Backing Kit allows up to 5 5/8" OD pipes or 6" (60°) angles (tapered)	Ea	\$66	8.9
5.963.0002.002	Large Backing 'B' Kit allows up to 11" OD pipes or 8" angles		\$56	11.0
5.963.0002.003	Universal Backing Kit allows up to 11" OD pipes or 8" angles (tapered)	Ea	\$72	13.0
<b>Other Hardware</b>				
5.963.1202.001	Angle Insert (adapts 3", 4", and 5" 60° angles for face mount applications)	Ea	\$8	1.1





## Antenna Mounts

### Large Pole Backing Kits

The Large Pole Backing Kits extends Trylon's offerings of large backing assemblies on page 14 to include larger pole diameters ranging from 11" to 18" in size.

Kits are available in standard 'A', 'B', and Universal kits like the current large backing assemblies, along with additional kits with one u-bolt for simple pipe additions.

#### LARGE POLE BACKING 'A' ASSEMBLY

This option comes with two 1/2" x 24" threaded rods and two extra large slotted channels. This assembly can join to other plates with 9/16" holes ranging from 2 7/8" to 5 5/8" on center.

#### LARGE POLE BACKING 'B' ASSEMBLY

Similar to option 'A', but comes complete with two extra 1/2" x 1 1/2" bolts for mounting to standard Trylon mounts. Otherwise, the kit has the same capability as kit 'A' but limited to 3/4" thick plates.

#### UNIVERSAL POLE BACKING ASSEMBLY

This assembly allows the vertical connection of two plates, even if they are not vertical to each other, and are most practical for tapered tower legs or when site information is limited. The package comes standard with two extra large slotted channels, and two 1/2" x 24" and two 1/2" x 8" threaded rods. This assembly can fit mating plates up to 3/4" thick and with holes ranging from 2 3/8" to 5 3/8" on center. This kit will fit round members from 11" to 18", and has up to 4" lateral panning capability.

#### LARGE POLE KIT WITH U-BOLT

This kit is ideal for mounting a standard antenna pipe (2 3/8", 2 7/8", 3 1/2", or 4 1/2") to a large pole ranging from 11" to 18" in diameter. The kit comes with two 1/2" x 24" threaded rods, two extra large slotted channels, and one u-bolt.

Kit includes two 1/2" x 24" rods, two 1/2" x 1 1/2" bolts and two channels



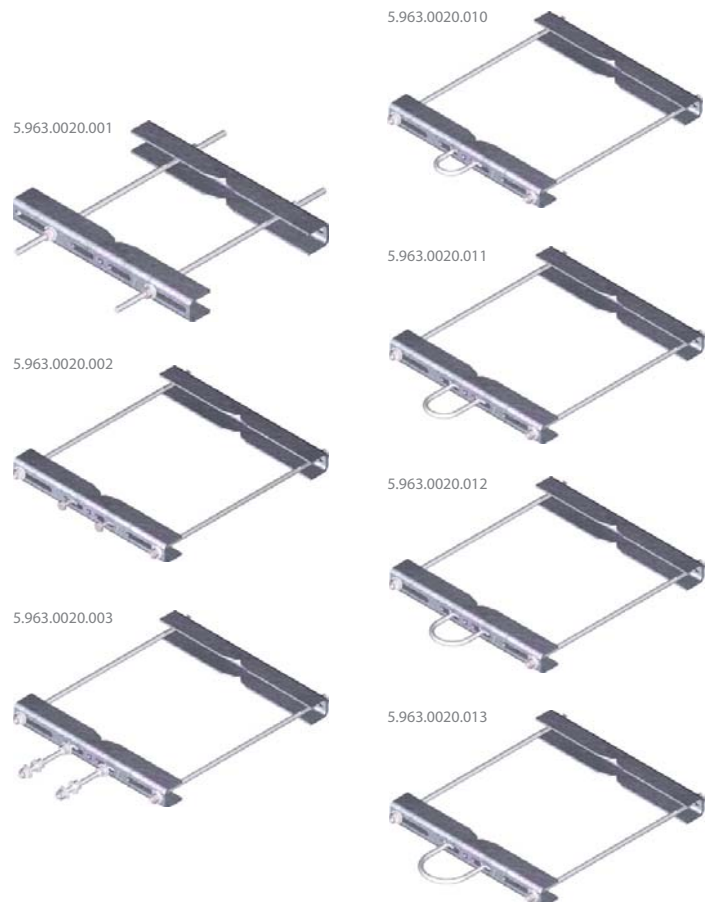
Kit 5.963.0020.002 Illustrated with 18" pipe

#### Quick Guide

Size	7 Variations	Mounts to	11" to 18" OD members
Design	Extra large backing kits	Material	Hot dip galvanized steel
Feature	Versatility of attachments	Order Separately	Pipe or Standoffs

Kit #	Description	Qty	List Price	Wt
<b>Large Pole Backing Assemblies</b>				
5.963.0020.001	Large Pole Backing 'A' Kit allows 11" to 18" pole connection	Ea	\$95	21
5.963.0020.002	Large Pole Backing 'B' Kit allows 11" to 18" pole connection	Ea	\$99	21
5.963.0020.003	Universal Pole Backing Kit allows 11"-18" tapered pole connection	Ea	\$121	23
<b>Large Pole Backing Assemblies with U-bolt</b>				
5.963.0020.010	Large Pole Kit with 2 3/8" u-bolt	Ea	\$101	22
5.963.0020.011	Large Pole Kit with 2 7/8" u-bolt	Ea	\$103	22
5.963.0020.012	Large Pole Kit with 3 1/2" u-bolt	Ea	\$104	22
5.963.0020.013	Large Pole Kit with 4 1/2" u-bolt	Ea	\$104	22

Note: U-Bolt size denotes actual pipe OD that will fit inside.  
Therefore a 2 3/8" u-bolt will fit a 2 3/8" OD pipe.



## Antenna Mounts

### Single Arm Standoffs

Single Arm Standoffs are the perfect solution for tower offsets. As a stand-alone, they provide an offset for mounting antenna pipes. As a group of two or four, they provide a robust support system for multiple antennas or face mounted sector frames. Since they are independent of each other, vertical or tapered legs are easily accommodated. With the correct backing kits, they can attach to round tower legs up to 11" OD in size, or angle legs up to 8" in size (60° or 90°). Four options are available; the smaller 2 $\frac{3}{8}$ " pipe with 2' or 3' long offsets, or the larger 3 $\frac{1}{2}$ " pipe with 2' or 3' long offsets. The application and site specific loading will govern which standoff is required.

All material is hot dip galvanized for maximum corrosion protection.



Quick Guide			
Size	4 variations	Mounts to	Up to 11" OD rounds or 8" angles
Design	Welded Arms	Material	Hot dip galvanized steel
Feature	Versatile mounting	Order Separately	Wireless Frames or Pipe Mounts

Kit #	Description	Qty	List Price	Wt
<b>2<math>\frac{3}{8}</math>" x 3' Single Arm Standoffs</b>				
5.930.0320.001	SAS300L: 2 $\frac{3}{8}$ " x 3' Standoff No Mounting Hardware	Ea	\$55	14
5.930.0320.002	SAS300L: 2 $\frac{3}{8}$ " x 3' Standoff With Small Backing Kit	Ea	\$75	17
5.930.0320.007	SAS300L: 2 $\frac{3}{8}$ " x 3' Standoff With Medium Backing Kit	Ea	\$103	22
5.930.0320.012	SAS300L: 2 $\frac{3}{8}$ " x 3' Standoff With Large Backing Kit	Ea	\$118	25
<b>2<math>\frac{3}{8}</math>" x 2' Single Arm Standoffs</b>				
5.930.0321.001	SAS200L: 2 $\frac{3}{8}$ " x 2' Standoff No Mounting Hardware	Ea	\$45	10
5.930.0321.002	SAS200L: 2 $\frac{3}{8}$ " x 2' Standoff With Small Backing Kit	Ea	\$65	13
5.930.0321.007	SAS200L: 2 $\frac{3}{8}$ " x 2' Standoff With Medium Backing Kit	Ea	\$93	18
5.930.0321.012	SAS200L: 2 $\frac{3}{8}$ " x 2' Standoff With Large Backing Kit	Ea	\$108	21

- Notes: 1. Small Backing Kits fit up to 4 $\frac{1}{2}$ " OD rounds.  
 2. Medium Backing Kits fit up to 5 $\frac{5}{8}$ " OD rounds and 6" (60°) angles or 5" (90°) angles.  
 3. Large Backing Kits fit up to 11" OD rounds and 8" angles.

Kit #	Description	Qty	List Price	Wt
<b>3<math>\frac{1}{2}</math>" x 3' Single Arm Standoffs</b>				
5.930.0322.001	SAS300M: 3 $\frac{1}{2}$ " x 3' Standoff No Mounting Hardware	Ea	\$104	30
5.930.0322.002	SAS300M: 3 $\frac{1}{2}$ " x 3' Standoff With Small Backing Kits	Ea	\$145	35
5.930.0322.007	SAS300M: 3 $\frac{1}{2}$ " x 3' Standoff With Medium Backing Kits	Ea	\$203	45
5.930.0322.012	SAS300M: 3 $\frac{1}{2}$ " x 3' Standoff With Large Backing Kits	Ea	\$233	52
<b>3<math>\frac{1}{2}</math>" x 2' Single Arm Standoffs</b>				
5.930.0323.001	SAS200M: 3 $\frac{1}{2}$ " x 2' Standoff No Mounting Hardware	Ea	\$84	22
5.930.0323.002	SAS200M: 3 $\frac{1}{2}$ " x 2' Standoff With Small Backing Kits	Ea	\$125	27
5.930.0323.007	SAS200M: 3 $\frac{1}{2}$ " x 2' Standoff With Medium Backing Kits	Ea	\$182	37
5.930.0323.012	SAS200M: 3 $\frac{1}{2}$ " x 2' Standoff With Large Backing Kits	Ea	\$213	44

- Notes: 1. Small Backing Kits fit up to 4 $\frac{1}{2}$ " OD rounds.  
 2. Medium Backing Kits fit up to 5 $\frac{5}{8}$ " OD rounds and 6" (60°) angles or 5" (90°) angles.  
 3. Large Backing Kits fit up to 11" OD rounds and 8" angles.

**Trylon** 21 South Field Drive, Elmira, ON N3B 0A6

P: 519.669.5421 F: 519.669.8912 E: info@trylon.com W: www.trylon.com



## Antenna Mounts

### Wireless Arms

Wireless Arms are a quick solution to installing small antennas to a tower structure. These single arm supports are made from rugged  $2\frac{3}{8}$ " OD structural rails and are offered in five standard widths. With additional pipe mount kits and tie-back kits, they offer tremendous versatility and are the basic component to building larger wireless frames. Standard with these assemblies is a backing kit capable of attaching to vertical or tapered tower legs up to 4" (60°) angles or  $4\frac{1}{2}$ " OD round members.

Although not included in these kits, tie-back assemblies are available and are commonly used to stabilize antennas and recommended for large diversities, heavy loading or high wind situations. Please see page 11 for a full selection of available tie-

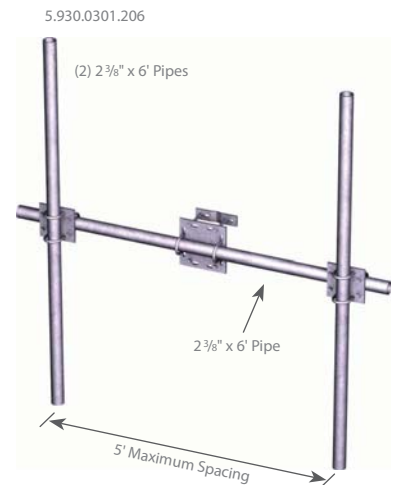
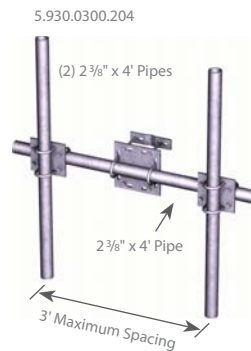
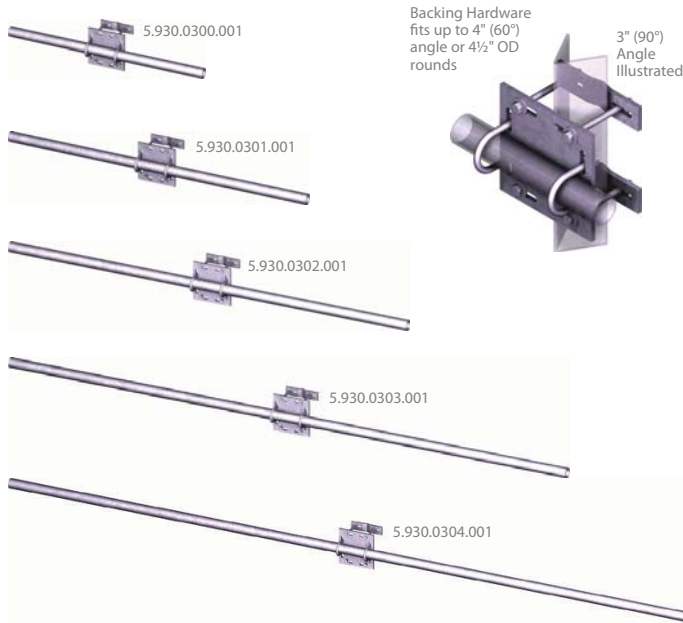
backs.

All material is hot dip galvanized for corrosion resistance in any environmental condition.

(Note: As an example, a 5' Wireless Arm with two 1' x 5' panels at maximum diversity, can achieve a wind capacity of 120mph. Call us to see which is best suited for your application.)

#### Quick Guide

Size	5 Variations	Mounts to	Up to 4" (60°) angles or $4\frac{1}{2}$ " OD rounds
Design	$2\frac{3}{8}$ " Pipes	Material	Hot dip galvanized steel
Feature	Versatile mount	Order Separately	Tie-Backs, page 11 Longer Pipes, page 93



Kit #	Description	Qty	List Price	Wt
<b>Wireless Arms</b>				
5.930.0300.001	WA3 - 3' Wireless Arm	Ea	\$125	30
5.930.0301.001	WA5 - 5' Wireless Arm	Ea	\$143	38
5.930.0302.001	WA7 - 7' Wireless Arm	Ea	\$162	46
5.930.0303.001	WA11 - 11' Wireless Arm	Ea	\$199	61
5.930.0304.001	WA14 - 14' Wireless Arm	Ea	\$228	73

- Notes: 1. Standard with each above assembly are backing kits that fit up to  $4\frac{1}{2}$ " OD rounds and 4" (60°) angles.  
2. For nomenclature, a WA3 stands for maximum diversity or 3', whereas the actual pipe is 1' longer (4' overall length).

Kit #	Description	Qty	List Price	Wt
<b>Wireless Arms with Two Pipes</b>				
5.930.0300.204	WA3 with two $2\frac{3}{8}$ " x 4' pipes	Ea	\$298	77
5.930.0301.204	WA5 with two $2\frac{3}{8}$ " x 4' pipes	Ea	\$317	85
5.930.0301.206	WA5 with two $2\frac{3}{8}$ " x 6' pipes	Ea	\$354	100

- Notes: 1. Standard with each above assembly are backing kits that fit up to  $4\frac{1}{2}$ " OD rounds and 4" (60°) angles.  
2. For nomenclature, a WA3 stands for maximum diversity or 3', whereas the actual pipe is 1' longer (4' overall length).



## Antenna Mounts

### Wireless Frames

Wireless Frames are the ideal solution for mounting sector antennas in a wireless system. The antenna pipes mount to the frame with u-bolts and can be positioned anywhere along the frame to achieve specific antenna separation.

The Wireless Frames come with standard backing hardware to mount directly to vertical tower legs up to 4½" OD round in size, or up to 4" (60°) angles. When the tower leg is sloped or an offset is necessary from the tower, a standoff (purchased separately on pages 4 to 7) can be used to compensate the taper and provide a vertical mounting surface.

Almost an unlimited array of diversities and antenna pipe mounts are available within our current kits. But if your requirements are outside one of our standard pre-packaged kits, start from scratch and build the system using the Wireless Arms on page 17 in conjunction with pipe and mounting hardware on page 90.

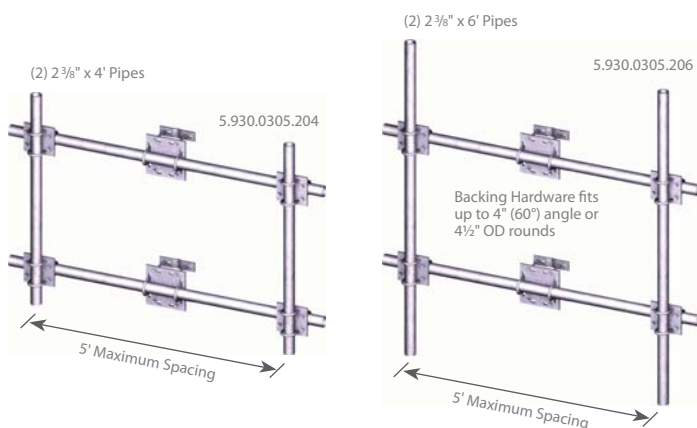
Tie-backs are not included in these assemblies, but are available and commonly used to stabilize antennas in heavy loading or high wind situations. Please see page 11 to 13 for a full selection of available tie-backs.

All material is hot dip galvanized to weather the elements.

(Note: As an example, a 7' Wireless Frame with two 1' x 8' panel antennas at maximum separation can achieve wind capacities up to 120mph, with less than 1° deflection. Call us to see which is best suited for your application.)

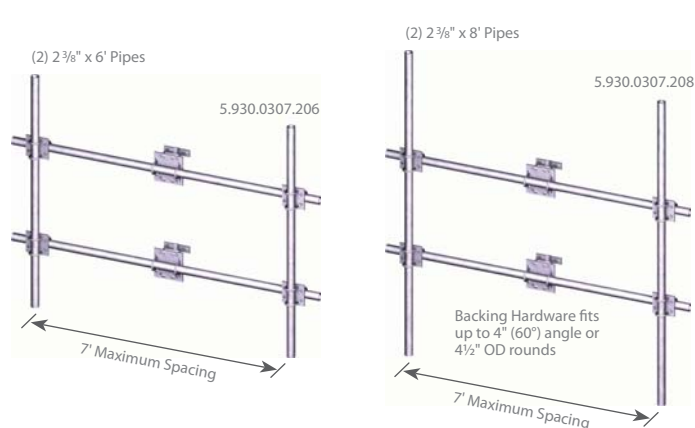
#### Quick Guide

Size	4 different widths (5', 7', 11', and 14')	Mounts to	Up to 4" (60°) angles or 4½" OD rounds
Design	Vertical Mount with dual 2⅜" Pipes	Material	Hot dip galvanized steel
Feature	Versatile mount	Order Separately	Tie-Backs, pages 11-13 Standoffs, pages 4-7



Kit #	Description	Qty	List Price	Wt
<b>5' Wireless Frames with Two Pipes</b>				
5.930.0305.204	WF5 - 5' Wireless Frame with two 2⅜" x 4' pipe assemblies	Ea	\$640	138
5.930.0305.206	WF5 - 5' Wireless Frame with two 2⅜" x 6' pipe assemblies	Ea	\$684	153
5.930.0305.208	WF5 - 5' Wireless Frame with two 2⅜" x 8' pipe assemblies	Ea	\$728	169
5.930.0305.212	WF5 - 5' Wireless Frame with two 2⅜" x 12" pipe assemblies	Ea	\$816	200

Notes: 1. Standard with each above assembly are backing kits that fit up to 4½" OD rounds and 4" (60°) angles.  
2. For nomenclature, a WF5 stands for maximum diversity or 5', whereas the actual pipe is 1' longer (6' overall length).



Kit #	Description	Qty	List Price	Wt
<b>7' Wireless Frames with Two Pipes</b>				
5.930.0307.204	WF7 - 7' Wireless Frame with two 2⅜" x 4' pipe assemblies	Ea	\$684	153
5.930.0307.206	WF7 - 7' Wireless Frame with two 2⅜" x 6' pipe assemblies	Ea	\$728	169
5.930.0307.208	WF7 - 7' Wireless Frame with two 2⅜" x 8' pipe assemblies	Ea	\$772	184
5.930.0307.212	WF7 - 7' Wireless Frame with two 2⅜" x 12" pipe assemblies	Ea	\$860	215

Notes: 1. Standard with each above assembly are backing kits that fit up to 4½" OD rounds and 4" (60°) angles.  
2. For nomenclature, a WF7 stands for maximum diversity or 7', whereas the actual pipe is 1' longer (8' overall length).

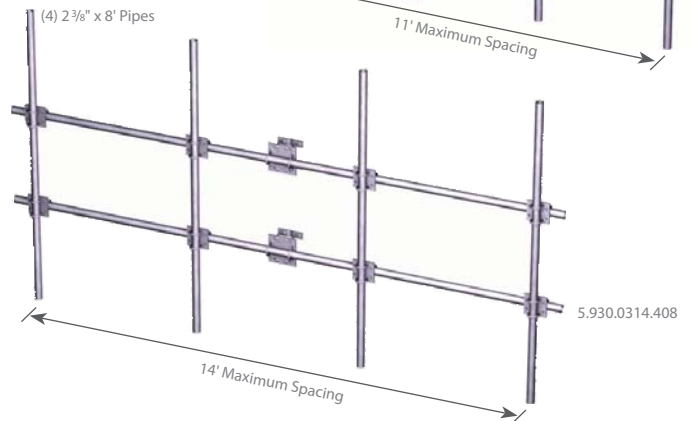
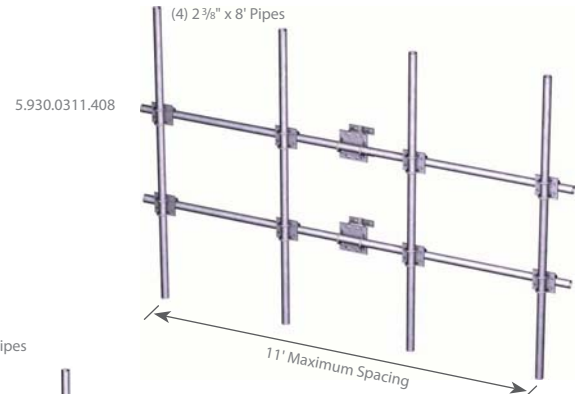
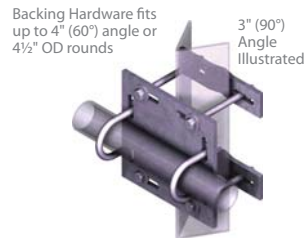
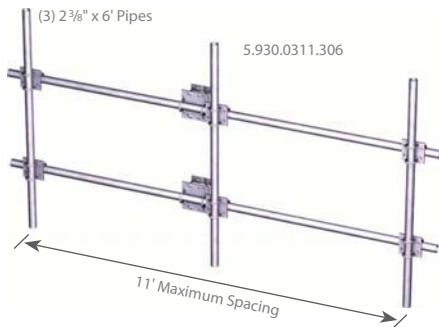
**Trylon** 21 South Field Drive, Elmira, ON N3B 0A6

P: 519.669.5421 F: 519.669.8912 E: info@trylon.com W: www.trylon.com



## Antenna Mounts

### Wireless Frames continued



Kit #	Description	Qty	List Price	Wt
<b>11' Wireless Frames with Two Pipes</b>				
5.930.0311.204	WF11 - 11' Wireless Frame with two 2 $\frac{3}{8}$ " x 4' pipe assemblies	Ea	\$753	184
5.930.0311.206	WF11 - 11' Wireless Frame with two 2 $\frac{3}{8}$ " x 6' pipe assemblies	Ea	\$796	200
5.930.0311.208	WF11 - 11' Wireless Frame with two 2 $\frac{3}{8}$ " x 8' pipe assemblies	Ea	\$839	215
5.930.0311.212	WF11 - 11' Wireless Frame with two 2 $\frac{3}{8}$ " x 12" pipe assemblies	Ea	\$925	246

Kit #	Description	Qty	List Price	Wt
<b>11' Wireless Frames with Three Pipes</b>				
5.930.0311.304	WF11 - 11' Wireless Frame with three 2 $\frac{3}{8}$ " x 4' pipe assemblies	Ea	\$901	215
5.930.0311.306	WF11 - 11' Wireless Frame with three 2 $\frac{3}{8}$ " x 6' pipe assemblies	Ea	\$966	238
5.930.0311.308	WF11 - 11' Wireless Frame with three 2 $\frac{3}{8}$ " x 8' pipe assemblies	Ea	\$1030	261
5.930.0311.312	WF11 - 11' Wireless Frame with three 2 $\frac{3}{8}$ " x 12" pipe assemblies	Ea	\$1159	307

Kit #	Description	Qty	List Price	Wt
<b>11' Wireless Frames with Four Pipes</b>				
5.930.0311.404	WF11 - 11' Wireless Frame with four 2 $\frac{3}{8}$ " x 4' pipe assemblies	Ea	\$1050	246
5.930.0311.406	WF11 - 11' Wireless Frame with four 2 $\frac{3}{8}$ " x 6' pipe assemblies	Ea	\$1135	277
5.930.0311.408	WF11 - 11' Wireless Frame with four 2 $\frac{3}{8}$ " x 8' pipe assemblies	Ea	\$1221	308
5.930.0311.412	WF11 - 11' Wireless Frame with four 2 $\frac{3}{8}$ " x 12" pipe assemblies	Ea	\$1393	369

- Notes: 1. Standard with each above assembly are backing kits that fit up to 4 $\frac{1}{2}$ " OD rounds and 4" (60°) angles.  
 2. For nomenclature, a WF11 stands for maximum diversity or 11', whereas the actual pipe is 1' longer (12' overall length).

Kit #	Description	Qty	List Price	Wt
<b>14' Wireless Frames with Three Pipes</b>				
5.930.0314.304	WF14 - 14' Wireless Frame with three 2 $\frac{3}{8}$ " x 4' pipe assemblies	Ea	\$968	238
5.930.0314.306	WF14 - 14' Wireless Frame with three 2 $\frac{3}{8}$ " x 6' pipe assemblies	Ea	\$1032	261
5.930.0314.308	WF14 - 14' Wireless Frame with three 2 $\frac{3}{8}$ " x 8' pipe assemblies	Ea	\$1096	284
5.930.0314.312	WF14 - 14' Wireless Frame with three 2 $\frac{3}{8}$ " x 12" pipe assemblies	Ea	\$1225	330

Kit #	Description	Qty	List Price	Wt
<b>14' Wireless Frames with Four Pipes</b>				
5.930.0314.404	WF14 - 14' Wireless Frame with four 2 $\frac{3}{8}$ " x 4' pipe assemblies	Ea	\$1116	269
5.930.0314.406	WF14 - 14' Wireless Frame with four 2 $\frac{3}{8}$ " x 6' pipe assemblies	Ea	\$1202	300
5.930.0314.408	WF14 - 14' Wireless Frame with four 2 $\frac{3}{8}$ " x 8' pipe assemblies	Ea	\$1287	331
5.930.0314.412	WF14 - 14' Wireless Frame with four 2 $\frac{3}{8}$ " x 12" pipe assemblies	Ea	\$1459	392

- Notes: 1. Standard with each above assembly are backing kits that fit up to 4 $\frac{1}{2}$ " OD rounds and 4" (60°) angles.  
 2. For nomenclature, a WF14 stands for maximum diversity or 14', whereas the actual pipe is 1' longer (15' overall length).

## Antenna Mounts

### Face Mounted Wireless Frames

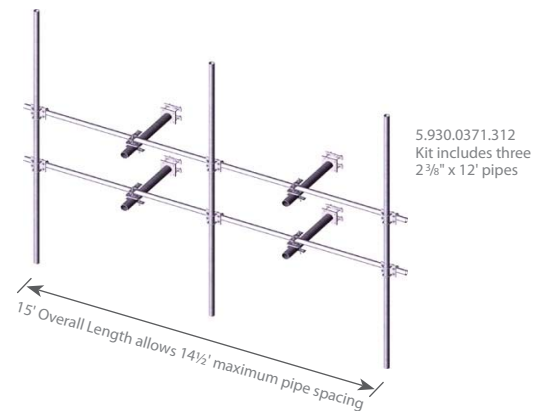
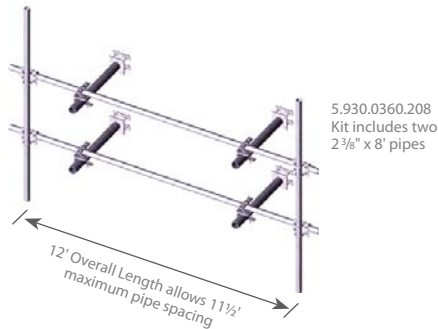
Face Mounted Wireless Frames permit an entire sector of antennas to be mounted up to 1½' offset to a tower face. The bolt together design has tremendous versatility and is offered in two standard widths, 12' and 15'.

The frames each come complete with four 2' Single Arm Standoffs (on page 16) and Universal Crossover Assemblies (on page 8). Together, these allow flexibility in both the leg attachment angle and also the frames angle along the tower face. The amount of adjustability depends on the tower face

width, the tower leg attachment angle and other unknown factors such as existing lines, but can be upwards of 30° under ideal circumstances.

The independent standoffs allow both vertical and tapered tower face installations. Depending on the backing hardware selected, they can attach up to 11" OD round legs or 8" angle legs. For installing to 60° angles (5" and smaller).

All material is hot dip galvanized for corrosion protection.



Kit #	Description	Qty	List Price	Wt
<b>12' Face Mounted Wireless Frames with Two Pipes</b>				
5.930.0360.208	FWF12MS with two 2⅜" x 8' pipes and Small Backing Kits	Ea	\$1428	329
5.930.0360.210	FWF12MS with two 2⅜" x 10' pipes and Small Backing Kits	Ea	\$1467	344
5.930.0360.212	FWF12MS with two 2⅜" x 12' pipes and Small Backing Kits	Ea	\$1505	360
<b>12' Face Mounted Wireless Frames with Three Pipes</b>				
5.930.0361.308	FWF12MS with three 2⅜" x 8' pipes and Small Backing Kits	Ea	\$1600	376
5.930.0361.310	FWF12MS with three 2⅜" x 10' pipes and Small Backing Kits	Ea	\$1658	399
5.930.0361.312	FWF12MS with three 2⅜" x 12' pipes and Small Backing Kits	Ea	\$1715	422
<b>12' Face Mounted Wireless Frames with Four Pipes</b>				
5.930.0362.408	FWF12MS with four 2⅜" x 8' pipes and Small Backing Kits	Ea	\$1771	422
5.930.0362.410	FWF12MS with four 2⅜" x 10' pipes and Small Backing Kits	Ea	\$1848	453
5.930.0362.412	FWF12MS with four 2⅜" x 12' pipes and Small Backing Kits	Ea	\$1925	484

Note: 1. Small Backing Kits fit up to 4½" OD rounds.  
2. All Kits come with our standard 3½" x 2' single arm standoffs.

Kit #	Description	Qty	List Price	Wt
<b>15' Face Mounted Wireless Frames with Two Pipes</b>				
5.930.0370.208	FWF15MS with two 2⅜" x 8' pipes and Small Backing Kits	Ea	\$1488	352
5.930.0370.210	FWF15MS with two 2⅜" x 10' pipes and Small Backing Kits	Ea	\$1526	368
5.930.0370.212	FWF15MS with two 2⅜" x 12' pipes and Small Backing Kits	Ea	\$1565	383
<b>15' Face Mounted Wireless Frames with Three Pipes</b>				
5.930.0371.308	FWF15MS with three 2⅜" x 8' pipes and Small Backing Kits	Ea	\$1659	399
5.930.0371.310	FWF15MS with three 2⅜" x 10' pipes and Small Backing Kits	Ea	\$1717	422
5.930.0371.312	FWF15MS with three 2⅜" x 12' pipes and Small Backing Kits	Ea	\$1775	445
<b>15' Face Mounted Wireless Frames with Four Pipes</b>				
5.930.0372.408	FWF15MS with four 2⅜" x 8' pipes and Small Backing Kits	Ea	\$1831	445
5.930.0372.410	FWF15MS with four 2⅜" x 10' pipes and Small Backing Kits	Ea	\$1908	476
5.930.0372.412	FWF15MS with four 2⅜" x 12' pipes and Small Backing Kits	Ea	\$1985	507

Note: 1. Small Backing Kits fit up to 4½" OD rounds.  
2. All Kits come with our standard 3½" x 2' single arm standoffs.

**Trylon** 21 South Field Drive, Elmira, ON N3B 0A6

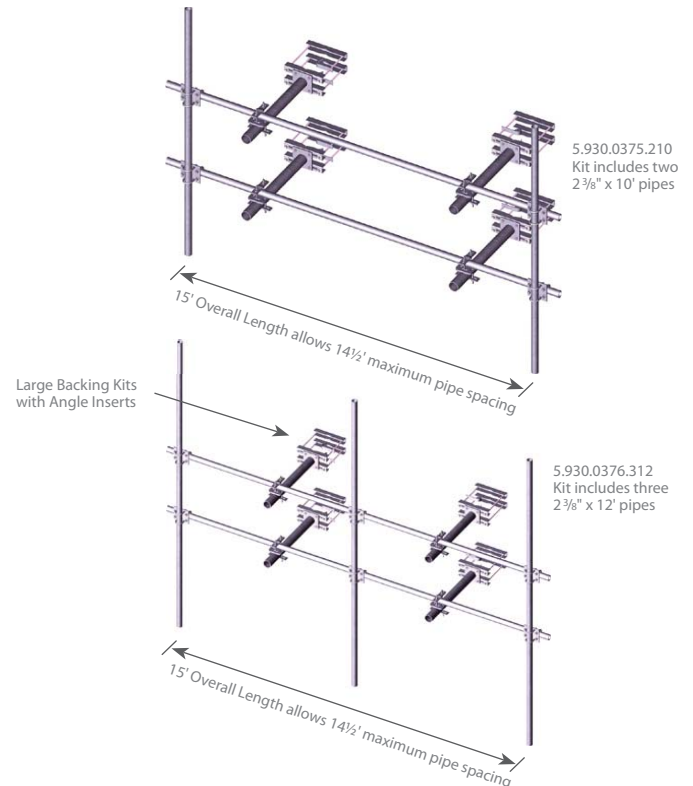
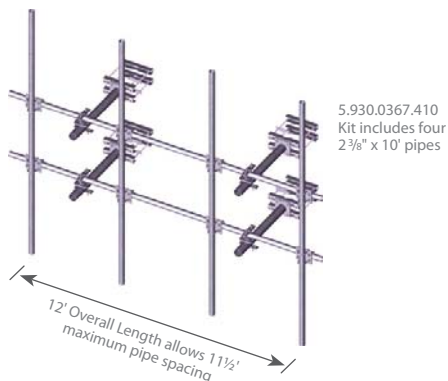
T: 519.669.5421 F: 519.669.8912 E: info@trylon.com W: www.trylon.com

## Antenna Mounts

### Face Mounted Wireless Frames continued

#### Quick Guide

Size	2 different widths	Mounts to	Up to 11" OD rounds or 8" angles
Design	Face mounted with 2' standoffs	Material	Hot dip galvanized steel
Feature	Versatile 2' off-set attachment	Order Separately	Tie-Backs, pages 11-13



Kit #	Description	Qty	List Price	Wt
<b>12' Face Mounted Wireless Frames with Two Pipes</b>				
5.930.0365.208	FWF12ML with two 2 3/8" x 8' pipes and Large Backing Kits	Ea	\$1703	406
5.930.0365.210	FWF12ML with two 2 3/8" x 10' pipes and Large Backing Kits	Ea	\$1738	421
5.930.0365.212	FWF12ML with two 2 3/8" x 12' pipes and Large Backing Kits	Ea	\$1773	436
<b>12' Face Mounted Wireless Frames with Three Pipes</b>				
5.930.0366.308	FWF12ML with three 2 3/8" x 8' pipes and Large Backing Kits	Ea	\$1860	452
5.930.0366.310	FWF12ML with three 2 3/8" x 10' pipes and Large Backing Kits	Ea	\$1912	475
5.930.0366.312	FWF12ML with three 2 3/8" x 12' pipes and Large Backing Kits	Ea	\$1965	498
<b>12' Face Mounted Wireless Frames with Four Pipes</b>				
5.930.0367.408	FWF12ML with four 2 3/8" x 8' pipes and Large Backing Kits	Ea	\$2016	499
5.930.0367.410	FWF12ML with four 2 3/8" x 10' pipes and Large Backing Kits	Ea	\$2087	529
5.930.0367.412	FWF12ML with four 2 3/8" x 12' pipes and Large Backing Kits	Ea	\$2157	560

Note: 1. Large Backing Kits fit up to 11" OD rounds and 8" (60°) angles.  
2. All Kits come with our standard 2 3/8" x 2' single arm standoffs.  
3. All Kits come complete with angle inserts to prevent smaller 60° angles from pinching during face mount installation.

Kit #	Description	Qty	List Price	Wt
<b>15' Face Mounted Wireless Frames with Two Pipes</b>				
5.930.0375.208	FWF15ML with two 2 3/8" x 8' pipes and Large Backing Kits	Ea	\$1757	429
5.930.0375.210	FWF15ML with two 2 3/8" x 10' pipes and Large Backing Kits	Ea	\$1792	444
5.930.0375.212	FWF15ML with two 2 3/8" x 12' pipes and Large Backing Kits	Ea	\$1828	459
<b>15' Face Mounted Wireless Frames with Three Pipes</b>				
5.930.0376.308	FWF15ML with three 2 3/8" x 8' pipes and Large Backing Kits	Ea	\$1914	475
5.930.0376.310	FWF15ML with three 2 3/8" x 10' pipes and Large Backing Kits	Ea	\$1967	498
5.930.0376.312	FWF15ML with three 2 3/8" x 12' pipes and Large Backing Kits	Ea	\$2020	521
<b>15' Face Mounted Wireless Frames with Four Pipes</b>				
5.930.0377.408	FWF15ML with four 2 3/8" x 8' pipes and Large Backing Kits	Ea	\$2071	522
5.930.0377.410	FWF15ML with four 2 3/8" x 10' pipes and Large Backing Kits	Ea	\$2141	552
5.930.0377.412	FWF15ML with four 2 3/8" x 12' pipes and Large Backing Kits	Ea	\$2212	583

Note: 1. Large Backing Kits fit up to 11" OD rounds and 8" (60°) angles.  
2. All Kits come with our standard 2 3/8" x 2' single arm standoffs.  
3. All Kits come complete with angle inserts to prevent smaller 60° angles from pinching during face mount installation.



## Antenna Mounts

### Face Mounted Microwave Frames

Face Mounted Microwave Frames are ideal for installing microwave dishes to a tower face, or when an apex mount (on pages 6 and 7) cannot achieve the proper dish azimuth.

Its versatile pipe-on-pipe design allows easy installation to both vertical and tapered (up to 10°) tower faces. Depending on the backing assembly selected, it can attach up to 11" OD round legs or 8" (60°) angle tower legs. For smaller 60° angle legs (5" and less), our special angle insert will protect the leg from pinching during installation.

To make ordering easier, we have pre-kitted four standard face width ranges (2'-6', 6'-10', 10'-14', and 14'-18'). They are also grouped in two or three level frames to accommodate various dish sizes and site wind conditions.

All material is hot dip galvanized for corrosion protection.

#### Quick Guide

Size	2 or 3 levels, in 4 standard face widths	Mounts to	Up to 11" OD rounds or 8" (60°) angles
Design	Face mounted with 2' standoffs	Material	Hot dip galvanized steel
Feature	4½" OD x 6' or 10' mounting pipe	Order Separately	Stabilizers or Stabilizer Clips

Kit #	Description	Qty	List Price	Wt
<b>2 Level Frame with Small Backing Kits</b>				
5.927.0110.001	2'-6' Face Mount Kit c/w 4½" OD x 6' mounting pipe	Ea	\$1351	348
5.927.0111.001	6'-10' Face Mount Kit c/w 4½" OD x 6' mounting pipe	Ea	\$1551	428
5.927.0112.001	10'-14' Face Mount Kit c/w 4½" OD x 6' mounting pipe	Ea	\$1673	476
5.927.0113.001	14'-18' Face Mount Kit c/w 4½" OD x 6' mounting pipe	Ea	\$1873	555
<b>2 Level Frame with Large Backing Kits</b>				
5.927.0110.101	2'-6' Face Mount Kit c/w 4½" OD x 6' mounting pipe	Ea	\$1785	425
5.927.0111.101	6'-10' Face Mount Kit c/w 4½" OD x 6' mounting pipe	Ea	\$1985	505
5.927.0112.101	10'-14' Face Mount Kit c/w 4½" OD x 6' mounting pipe	Ea	\$2107	552
5.927.0113.101	14'-18' Face Mount Kit c/w 4½" OD x 6' mounting pipe	Ea	\$2307	632

Notes: 1. Small Backing Kits fit up to 4½" OD round members.  
2. Large Backing Kits fit up to 11" OD rounds and 8" (60°) angles.



Kit #	Description	Qty	List Price	Wt
<b>3 Level Frame with Small Backing Kits</b>				
5.927.0120.001	2'-6' Face Mount Kit c/w 4½" OD x 10' mounting pipe	Ea	\$2050	534
5.927.0121.001	6'-10' Face Mount Kit c/w 4½" OD x 10' mounting pipe	Ea	\$2349	653
5.927.0122.001	10'-14' Face Mount Kit c/w 4½" OD x 10' mounting pipe	Ea	\$2533	725
5.927.0123.001	14'-18' Face Mount Kit c/w 4½" OD x 10' mounting pipe	Ea	\$2832	844
<b>3 Level Frame with Large Backing Kits</b>				
5.927.0120.101	2'-6' Face Mount Kit c/w 4½" OD x 10' mounting pipe	Ea	\$2701	649
5.927.0121.101	6'-10' Face Mount Kit c/w 4½" OD x 10' mounting pipe	Ea	\$3000	768
5.927.0122.101	10'-14' Face Mount Kit c/w 4½" OD x 10' mounting pipe	Ea	\$3184	840
5.927.0123.101	14'-18' Face Mount Kit c/w 4½" OD x 10' mounting pipe	Ea	\$3483	959

Notes: 1. Small Backing Kits fit up to 4½" OD round members.  
2. Large Backing Kits fit up to 11" OD rounds and 8" (60°) angles.

**Trylon** 21 South Field Drive, Elmira, ON N3B 0A6

P: 519.669.5421 F: 519.669.8912 E: info@trylon.com W: www.trylon.com

## Antenna Mounts

### Face Mounted Microwave Frames continued

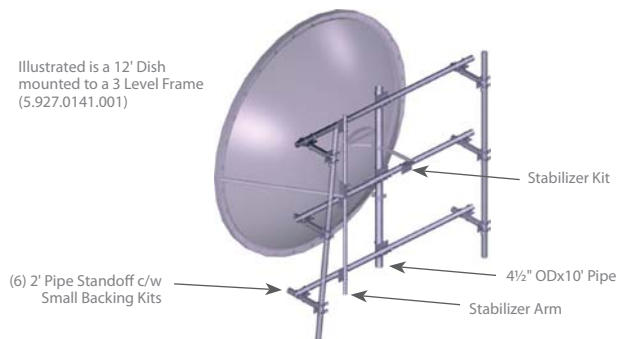
The two tables below are pre-assembled kits with standard stabilizers to meet industry microwave requirements. The 2 Level Frame options come complete with one side Stabilizer Arm Kit to fit most 4' to 6' dishes. The 3 Level Frame options are kitted with one side Stabilizer Arm Kit and one inner Stabilizer Kit to fit most 8' to 12' dishes.

All material is hot dip galvanized.

Kit #	Description	Qty	List Price	Wt
<b>2 Level Frame with Small Backing Kits and Stabilizer Arm</b>				
5.927.0130.001	2'-6' Face Mount Kit c/w 4½" OD x 6' mounting pipe	Ea	\$1608	397
5.927.0131.001	6'-10' Face Mount Kit c/w 4½" OD x 6' mounting pipe	Ea	\$1813	477
5.927.0132.001	10'-14' Face Mount Kit c/w 4½" OD x 6' mounting pipe	Ea	\$1939	524
5.927.0133.001	14'-18' Face Mount Kit c/w 4½" OD x 6' mounting pipe	Ea	\$2144	604
<b>2 Level Frame with Large Backing Kits and Stabilizer Arm</b>				
5.927.0130.101	2'-6' Face Mount Kit c/w 4½" OD x 6' mounting pipe	Ea	\$2054	474
5.927.0131.101	6'-10' Face Mount Kit c/w 4½" OD x 6' mounting pipe	Ea	\$2259	553
5.927.0132.101	10'-14' Face Mount Kit c/w 4½" OD x 6' mounting pipe	Ea	\$2385	601
5.927.0133.101	14'-18' Face Mount Kit c/w 4½" OD x 6' mounting pipe	Ea	\$2591	681

Kit #	Description	Qty	List Price	Wt
<b>3 Level Frame with Small Backing Kits, Stabilizer Arm, and Clip</b>				
5.927.0140.001	2'-6' Face Mount Kit c/w 4½" OD x 10' mounting pipe	Ea	\$2468	614
5.927.0141.001	6'-10' Face Mount Kit c/w 4½" OD x 10' mounting pipe	Ea	\$2776	734
5.927.0142.001	10'-14' Face Mount Kit c/w 4½" OD x 10' mounting pipe	Ea	\$2965	805
5.927.0143.001	14'-18' Face Mount Kit c/w 4½" OD x 10' mounting pipe	Ea	\$3273	925
<b>3 Level Frame with Large Backing Kits, Stabilizer Arm, and Clip</b>				
5.927.0140.101	2'-6' Face Mount Kit c/w 4½" OD x 10' mounting pipe	Ea	\$3138	729
5.927.0141.101	6'-10' Face Mount Kit c/w 4½" OD x 10' mounting pipe	Ea	\$3446	848
5.927.0142.101	10'-14' Face Mount Kit c/w 4½" OD x 10' mounting pipe	Ea	\$3635	920
5.927.0143.101	14'-18' Face Mount Kit c/w 4½" OD x 10' mounting pipe	Ea	\$3942	1040

- Notes: 1. Small Backing Kits fit up to 4½" OD round members.  
2. Large Backing Kits fit up to 11" OD rounds and 8" (60°) angles.



### Optional Face Mount Kits

#### STABILIZER KITS

Stabilizer Kits are used to attach microwave panning kits or tie backs to a tower structure. Three attachment options (2⅜", 2⅞", 3½", and 4½" OD) are available to suit your specific needs.

#### STABILIZER ARM KITS

The pre-kitted Stabilizer Arm Kits come complete with attachment hardware to attach to our standard face mounted microwave frames, and are often added when more than one outside dish stabilizer is required.

#### PIPE MOUNT KITS

Optional pipe mount kits are available when requirements exceed the typical arrangement of one dish per face. All material is hot dip galvanized.



Kit #	Description	Qty	List Price	Wt
<b>Stabilizer Kits</b>				
5.927.0100.001	Stabilizer Kit, fits 2⅜" OD pipes	Ea	\$45	6.8
5.927.0100.002	Stabilizer Kit, fits 2⅞" OD pipes	Ea	\$49	7.0
5.927.0100.003	Stabilizer Kit, fits 3½" OD pipes	Ea	\$51	7.0
5.927.0100.004	Stabilizer Kit, fits 4½" OD pipes	Ea	\$57	8.4
<b>Stabilizer Arm Kits</b>				
5.927.0101.206	2 Pt Stabilizer Arm, fits 3½" OD pipes	Ea	\$236	49
5.927.0101.310	3 Pt Stabilizer Arm, fits 3½" OD pipes	Ea	\$340	73
<b>Pipe Mount Kits</b>				
5.927.0105.206	2 Pt, 4½" OD x 6' Pipe Mount c/w u-bolts to fit 3½" OD pipes	Ea	\$348	92
5.927.0106.308	3 Pt, 4½" OD x 6' Pipe Mount c/w u-bolts to fit 3½" OD pipes	Ea	\$546	150

Note: The 2⅞" OD pipe can be exchanged for a 3" OD pipe.

## A BIG FAMILY IS A GOOD THING

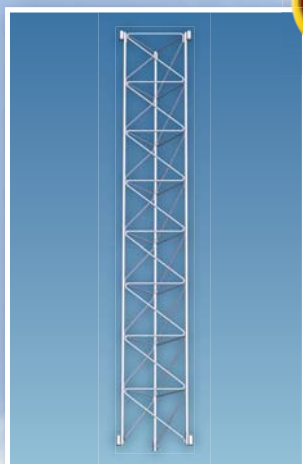
Trylon's family of kit towers is a **ONE SOURCE**,  
total tower solution from light to heavy duty



< Up to 96' tall



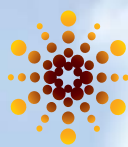
Up to 190' tall >



- < One section replaces 45/55/65
- < Guyed to 480'
- < Bracketed to 100'
- < Self-Support to 70'



Up to 251' tall >



# Trylon

ISO 9001:2000 Registered

[www.trylon.com](http://www.trylon.com)



## Antenna Mounts

### Lightweight T-Frames

Trylon's Lightweight T-Frames are made from robust welded frames ideal for sectorized applications using small antennas. It's 3' standoff bolts easily to the welded frames achieving an overall face width of 12½'.

For attachment, these kits come standard with either four u-bolts to fit a 4½" OD pipe mount or four small backing kits to fit up to 4½" OD pipe mounts. Note, the 4½" OD pipe mount is sold separately.

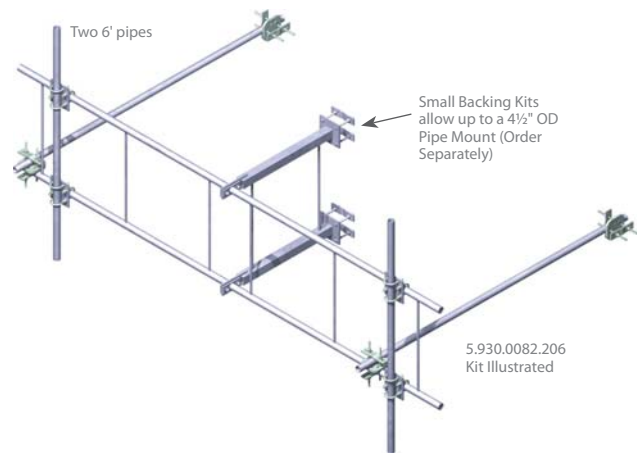
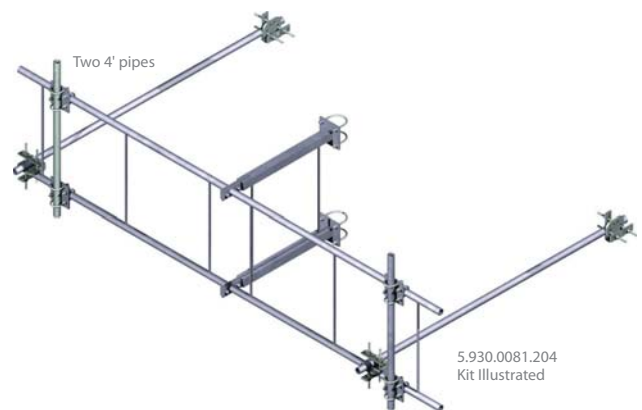
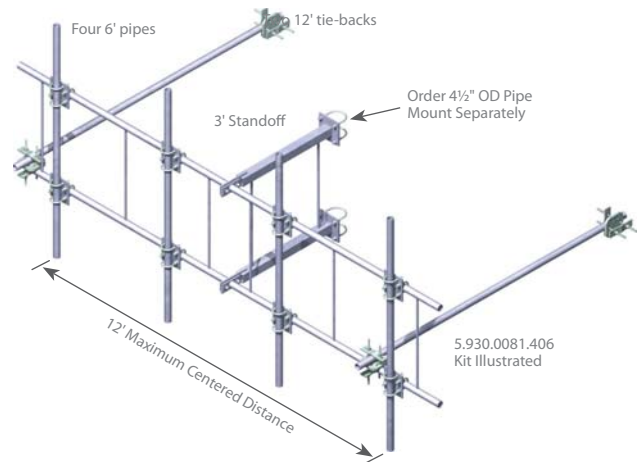
Two 12' long tie-back kits are included in every option, and can attach to members up to 3½" OD in size.

A variation of 1.90" OD pipe lengths and quantities are available in the below tables. All material is hot dip galvanized.

#### Quick Guide

Size	2½" face width	Mounts to	Up to 4½" OD pipe mounts
Design	Bolt-together weldments	Material	Hot dip galvanized steel
Feature	Lightweight design	Order Separately	Antenna pipes on page 90

Kit #	Description	Qty	List Price	Wt
<b>Lightweight T-Frames with Four U-bolts</b>				
5.930.0081.204	12' T-Frame c/w four U-bolts and two 1.90" OD x 4' pipe mounts	Ea	\$1325	293
5.930.0081.206	12' T-Frame c/w four U-bolts and two 1.90" OD x 6' pipe mounts	Ea	\$1357	304
5.930.0081.304	12' T-Frame c/w four U-bolts and three 1.90" OD x 4' pipe mounts	Ea	\$1448	320
5.930.0081.306	12' T-Frame c/w four U-bolts and three 1.90" OD x 6' pipe mounts	Ea	\$1495	337
5.930.0081.404	12' T-Frame c/w four U-bolts and four 1.90" OD x 4' pipe mounts	Ea	\$1570	347
5.930.0081.406	12' T-Frame c/w four U-bolts and four 1.90" OD x 6' pipe mounts	Ea	\$1633	370
<b>Lightweight T-Frames with Four Small Backing Kits</b>				
5.930.0082.204	12' T-Frame c/w four Small Backing Kits and two 1.90" OD x 4' pipe mounts	Ea	\$1374	298
5.930.0082.206	12' T-Frame c/w four Small Backing Kits and two 1.90" OD x 6' pipe mounts	Ea	\$1406	310
5.930.0082.304	12' T-Frame c/w four Small Backing Kits and three 1.90" OD x 4' pipe mounts	Ea	\$1497	325
5.930.0082.306	12' T-Frame c/w four Small Backing Kits and three 1.90" OD x 6' pipe mounts	Ea	\$1544	343
5.930.0082.404	12' T-Frame c/w four Small Backing Kits and four 1.90" OD x 4' pipe mounts	Ea	\$1619	353
5.930.0082.406	12' T-Frame c/w four Small Backing Kits and four 1.90" OD x 6' pipe mounts	Ea	\$1682	375





## Antenna Mounts

### T-Frame Sector Mounts

Trylon's versatile T-Frame Sector Mounts are offered in 12' and 15' overall widths. These T-Frames are also offered with 2 $\frac{3}{8}$ " OD rails for your light duty needs, and 3 $\frac{1}{2}$ " OD rails for your heavier wind or larger loading requirements.

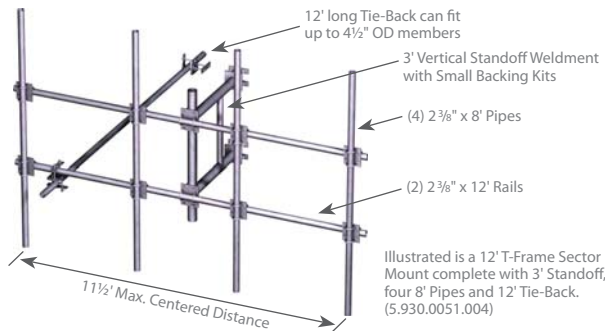
Sector diversity is achieved through the leg offset, by either rotating the mount about the tower leg, or by using the 3 $\frac{1}{2}$ " offset pipe. The T-Frame comes standard with a 3' offset, which ultimately gives the antennas just over a 3 $\frac{1}{2}$ " true structure offset (see illustration). Tapered standoffs are also available for structures with 1 in 20 (3°) slope for both offset sizes.

To accommodate various sized tower legs, standard small backing kits are offered for up to 4 $\frac{1}{2}$ " OD members, and large

backing kits for round members up to 11" OD, or 60° and 90° angle legs up to 8" in size.

A 12' long tie-back assembly is included to stabilize your antennas in high wind or ice condition. They can attach to members up to 4 $\frac{1}{2}$ " OD for small backing options and 11" OD for large backing options. If required, larger tie-backs can be ordered separately on page 11. All material is hot dip galvanized.

(Note: As an example, a 15' T-Frame with 2 $\frac{3}{8}$ " OD can hold four 1' x 8' panels at maximum diversity under 80mph winds, whereas the 3 $\frac{1}{2}$ " OD rails can achieve wind capacities up to 120mph, both with less than 1° deflection. Call us to see which is best suited for your application.)



#### Quick Guide

Size	12' or 15' Face Widths	Mounts to	Up to 11" OD Legs Tapered or Vertical
Design	Pipe Frame with 3' Welded Standoff	Material	Hot dip galvanized steel
Feature	Heavy duty design	Order Separately	Longer Tie-Backs than below, page 11

Kit #	Description	Qty	List Price	Wt
<b>12' T-Frame Sector with 2<math>\frac{3}{8}</math>" Rails</b>				
5.930.0051.002	T-Frame with 3' Vertical Standoff	Ea	\$1430	381
5.930.0052.002	T-Frame with 3' Tapered Standoff Includes two 2 $\frac{3}{8}$ " x 8' pipes, Small Backing Kits, and 12' long Tie-Back		\$1434	382
5.930.0051.003	T-Frame with 3' Vertical Standoff	Ea	\$1602	428
5.930.0052.003	T-Frame with 3' Tapered Standoff Includes three 2 $\frac{3}{8}$ " x 8' pipes, Small Backing Kits, and 12' long Tie-Back		\$1605	429
5.930.0051.004	T-Frame with 3' Vertical Standoff	Ea	\$1773	474
5.930.0052.004	T-Frame with 3' Tapered Standoff Includes four 2 $\frac{3}{8}$ " x 8' pipes, Small Backing Kits, and 12' long Tie-Back		\$1777	475
5.930.0051.012	T-Frame with 3' Vertical Standoff	Ea	\$1637	429
5.930.0052.012	T-Frame with 3' Tapered Standoff Includes two 2 $\frac{3}{8}$ " x 8' pipes, Large Backing Kits, and 12' long Tie-Back		\$1640	430
5.930.0051.013	T-Frame with 3' Vertical Standoff	Ea	\$1808	476
5.930.0052.013	T-Frame with 3' Tapered Standoff Includes three 2 $\frac{3}{8}$ " x 8' pipes, Large Backing Kits, and 12' long Tie-Back		\$1812	477
5.930.0051.014	T-Frame with 3' Vertical Standoff	Ea	\$1980	522
5.930.0052.014	T-Frame with 3' Tapered Standoff Includes four 2 $\frac{3}{8}$ " x 8' pipes, Large Backing Kits, and 12' long Tie-Back		\$1983	523

Notes: 1. Small Backing Kits fit up to 4 $\frac{1}{2}$ " OD rounds.  
2. Large Backing Kits fit up to 11" OD rounds and 8" angles.

Top number is always the Vertical Weldment / Bottom number is always the Tapered Weldment

Kit #	Description	Qty	List Price	Wt
<b>12' T-Frame Sector with 3<math>\frac{1}{2}</math>" Rails</b>				
5.930.0053.002	T-Frame with 3' Vertical Standoff	Ea	\$1782	486
5.930.0054.002	T-Frame with 3' Tapered Standoff Includes two 2 $\frac{3}{8}$ " x 8' pipes, Small Backing Kits, and 12' long Tie-Back		\$1731	487
5.930.0053.003	T-Frame with 3' Vertical Standoff	Ea	\$1917	536
5.930.0054.003	T-Frame with 3' Tapered Standoff Includes three 2 $\frac{3}{8}$ " x 8' pipes, Small Backing Kits, and 12' long Tie-Back		\$1920	537
5.930.0053.004	T-Frame with 3' Vertical Standoff	Ea	\$2106	585
5.930.0054.004	T-Frame with 3' Tapered Standoff Includes four 2 $\frac{3}{8}$ " x 8' pipes, Small Backing Kits, and 12' long Tie-Back		\$2109	586
5.930.0053.012	T-Frame with 3' Vertical Standoff	Ea	\$1934	535
5.930.0054.012	T-Frame with 3' Tapered Standoff Includes two 2 $\frac{3}{8}$ " x 8' pipes, Large Backing Kits, and 12' long Tie-Back		\$1938	536
5.930.0053.013	T-Frame with 3' Vertical Standoff	Ea	\$2123	584
5.930.0054.013	T-Frame with 3' Tapered Standoff Includes three 2 $\frac{3}{8}$ " x 8' pipes, Large Backing Kits, and 12' long Tie-Back		\$2127	585
5.930.0053.014	T-Frame with 3' Vertical Standoff	Ea	\$2312	633
5.930.0054.014	T-Frame with 3' Tapered Standoff Includes four 2 $\frac{3}{8}$ " x 8' pipes, Large Backing Kits, and 12' long Tie-Back		\$2316	634

Notes: 1. Small Backing Kits fit up to 4 $\frac{1}{2}$ " OD rounds.  
2. Large Backing Kits fit up to 11" OD rounds and 8" angles.

**Trylon** 21 South Field Drive, Elmira, ON N3B 0A6

P: 519.669.5421 F: 519.669.8912 E: info@trylon.com W: www.trylon.com

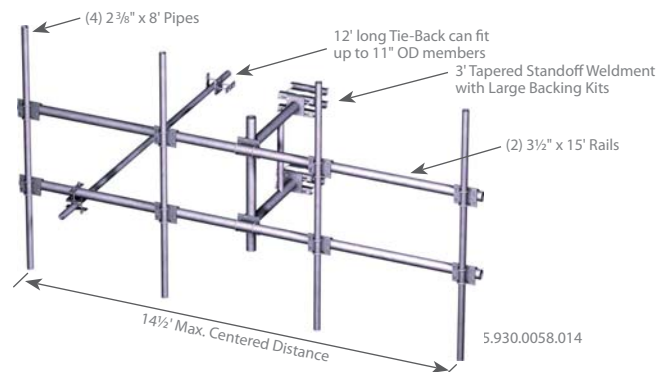
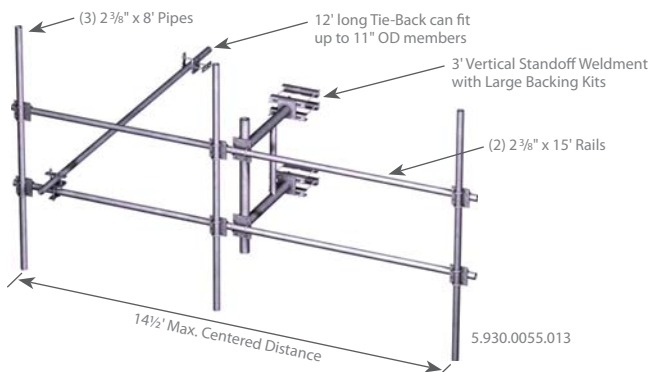
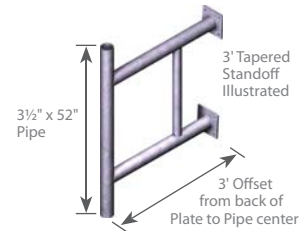
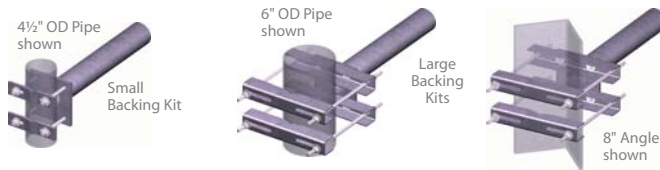


Trylon

(U.S. List) Accessories

## Antenna Mounts

### T-Frame Sector Mounts continued



Kit #	Description	Qty	List Price	Wt
<b>15' T-Frame Sector with 2 3/8" Rails</b>				
5.930.0055.002	T-Frame with 3' Vertical Standoff	Ea	\$1490	404
5.930.0056.002	T-Frame with 3' Tapered Standoff Includes two 2 3/8" x 8' pipes, Small Backing Kits, and 12' long Tie-Back		\$1493	405
5.930.0055.003	T-Frame with 3' Vertical Standoff	Ea	\$1661	451
5.930.0056.003	T-Frame with 3' Tapered Standoff Includes three 2 3/8" x 8' pipes, Small Backing Kits, and 12' long Tie-Back		\$1665	452
5.930.0055.004	T-Frame with 3' Vertical Standoff	Ea	\$1833	497
5.930.0056.004	T-Frame with 3' Tapered Standoff Includes four 2 3/8" x 8' pipes, Small Backing Kits, and 12' long Tie-Back		\$1836	498
5.930.0055.012	T-Frame with 3' Vertical Standoff	Ea	\$1696	452
5.930.0056.012	T-Frame with 3' Tapered Standoff Includes two 2 3/8" x 8' pipes, Large Backing Kits, and 12' long Tie-Back		\$1700	453
5.930.0055.013	T-Frame with 3' Vertical Standoff	Ea	\$1868	499
5.930.0056.013	T-Frame with 3' Tapered Standoff Includes three 2 3/8" x 8' pipes, Large Backing Kits, and 12' long Tie-Back		\$1871	500
5.930.0055.014	T-Frame with 3' Vertical Standoff	Ea	\$2039	545
5.930.0056.014	T-Frame with 3' Tapered Standoff Includes four 2 3/8" x 8' pipes, Large Backing Kits, and 12' long Tie-Back		\$2043	546

Notes: 1. Small Backing Kits fit up to 4 1/2" OD rounds.  
2. Large Backing Kits fit up to 11" OD rounds and 8" angles.

Top number is always the Vertical Weldment / Bottom number is always the Tapered Weldment

Kit #	Description	Qty	List Price	Wt
<b>15' T-Frame Sector with 3 1/2" Rails</b>				
5.930.0057.002	T-Frame with 3' Vertical Standoff	Ea	\$1850	534
5.930.0058.002	T-Frame with 3' Tapered Standoff Includes two 2 3/8" x 8' pipes, Small Backing Kits, and 12' long Tie-Back		\$1854	535
5.930.0057.003	T-Frame with 3' Vertical Standoff	Ea	\$2039	583
5.930.0058.003	T-Frame with 3' Tapered Standoff Includes three 2 3/8" x 8' pipes, Small Backing Kits, and 12' long Tie-Back		\$2043	584
5.930.0057.004	T-Frame with 3' Vertical Standoff	Ea	\$2228	633
5.930.0058.004	T-Frame with 3' Tapered Standoff Includes four 2 3/8" x 8' pipes, Small Backing Kits, and 12' long Tie-Back		\$2232	634
5.930.0057.012	T-Frame with 3' Vertical Standoff	Ea	\$2057	582
5.930.0058.012	T-Frame with 3' Tapered Standoff Includes two 2 3/8" x 8' pipes, Large Backing Kits, and 12' long Tie-Back		\$2060	583
5.930.0057.013	T-Frame with 3' Vertical Standoff	Ea	\$2246	632
5.930.0058.013	T-Frame with 3' Tapered Standoff Includes three 2 3/8" x 8' pipes, Large Backing Kits, and 12' long Tie-Back		\$2249	633
5.930.0057.014	T-Frame with 3' Vertical Standoff	Ea	\$2435	681
5.930.0058.014	T-Frame with 3' Tapered Standoff Includes four 2 3/8" x 8' pipes, Large Backing Kits, and 12' long Tie-Back		\$2438	682

Notes: 1. Small Backing Kits fit up to 4 1/2" OD rounds.  
2. Large Backing Kits fit up to 11" OD rounds and 8" angles.

Trylon 21 South Field Drive, Elmira, ON N3B 0A6

P: 519.669.5421 F: 519.669.8912 E: info@trylon.com W: www.trylon.com

## Antenna Mounts

### Universal T-Frame Sector Mounts

The Universal T-Frame Sector Mounts are the most versatile of our T-Frame designs. They have the same strength and rugged features as the previous T-Frames, but come standard with universal hardware for almost any imaginable tower design.

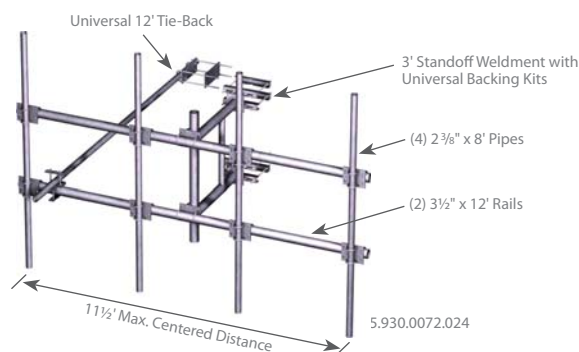
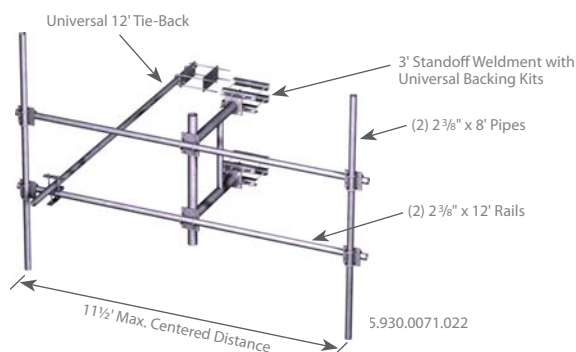
Standard are 3' standoff, universal backing assemblies and universal tie backs (12' long) that can attach to either round legs ranging from 1½" up to 11" OD, or 60° or 90° angle legs up to 8" in size. In addition, the unique backing assemblies can mount to either vertical tower legs or tapered tower legs up to 8° (1 in 7) slope.

Universal T-Frame Sector Mounts are offered in 12' and 15' overall widths and with either 2⅜" OD or 3½" OD horizontal rails, depending on your loading requirements.

All materials are hot dip galvanized for corrosion resistance in any environmental condition.

(Note: As a capacity example, a 15' T-Frame with 2⅜" OD can hold four 1' x 6' panels at maximum diversity under 80mph winds, whereas the 3½" OD rails can achieve wind capacities up to 100mph, both with less than 1° deflection. Call us to see which is best suited for your application.)

Quick Guide			
Size	12' or 15' Face Widths	Mounts to	Up to 11" OD Legs Tapered or Vertical
Design	Pipe Frame with 3' Welded Standoff	Material	Hot dip galvanized steel
Feature	Heavy duty Universal design	Order Separately	Longer Tie-Backs or different pipe lengths



Kit #	Description	Qty	List Price	Wt
<b>12' Universal T-Frame Sector with 2⅜" Rails</b>				
5.930.0071.021	T-Frame with 3' Vertical Standoff Includes Universal Backing Kit, and Universal 12' Tie-Back	Ea	\$1345	342
5.930.0071.022	T-Frame with 3' Vertical Standoff Includes two 2⅜" x 8' pipes, Universal Backing Kit, and Universal 12' Tie-Back	Ea	\$1678	435
5.930.0071.023	T-Frame with 3' Vertical Standoff Includes three 2⅜" x 8' pipes, Universal Backing Kit, and Universal 12' Tie-Back	Ea	\$1845	482
5.930.0071.024	T-Frame with 3' Vertical Standoff Includes four 2⅜" x 8' pipes, Universal Backing Kit, and Universal 12' Tie-Back	Ea	\$2012	528

Notes: 1. Universal Backing Kit fits up to 11" OD rounds and 8" angles; and can mount to vertical or tapered legs up to 8° (1 in 7) slope.  
2. Universal Tie-Backs can attach up to 11" OD members.

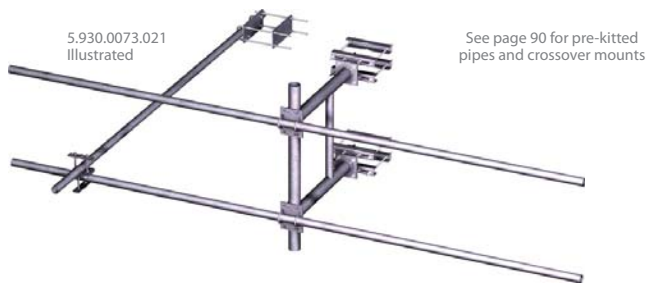
Kit #	Description	Qty	List Price	Wt
<b>12' Universal T-Frame Sector with 3½" Rails</b>				
5.930.0072.021	T-Frame with 3' Vertical Standoff Includes Universal Backing Kit, and Universal 12' Tie-Back	Ea	\$1600	442
5.930.0072.022	T-Frame with 3' Vertical Standoff Includes two 2⅜" x 8' pipes, Universal Backing Kit, and Universal 12' Tie-Back	Ea	\$1967	541
5.930.0072.023	T-Frame with 3' Vertical Standoff Includes three 2⅜" x 8' pipes, Universal Backing Kit, and Universal 12' Tie-Back	Ea	\$2152	590
5.930.0072.024	T-Frame with 3' Vertical Standoff Includes four 2⅜" x 8' pipes, Universal Backing Kit, and Universal 12' Tie-Back	Ea	\$2335	639

Notes: 1. Universal Backing Kit fits up to 11" OD rounds and 8" angles; and can mount to vertical or tapered legs up to 8° (1 in 7) slope.  
2. Universal Tie-Backs can attach up to 11" OD members.



## Antenna Mounts

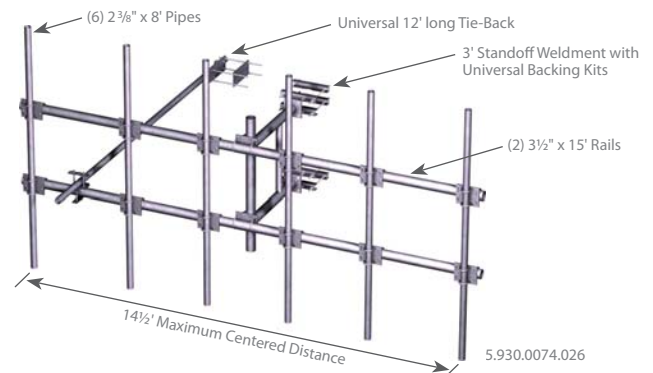
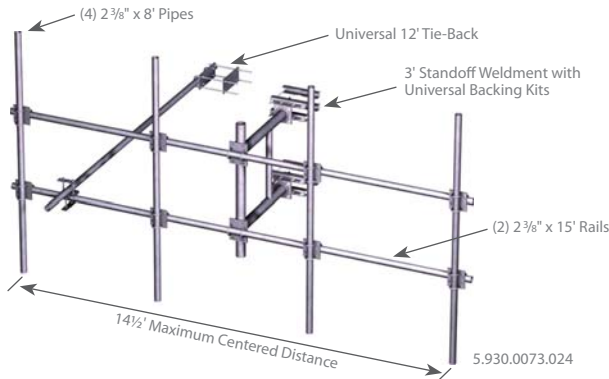
### Universal T-Frame Sector Mounts continued



Universal Backing Kit attached to a tapered 8" angle



Universal Backing Kit attached to a tapered 6" pipe (up to 11" OD capability)



Kit #	Description	Qty	List Price	Wt
<b>15' Universal T-Frame Sector with 2 3/8" Rails</b>				
5.930.0073.021	T-Frame with 3' Vertical Standoff Includes Universal Backing Kit, and Universal 12' Tie-Back	Ea	\$1444	365
5.930.0073.022	T-Frame with 3' Vertical Standoff Includes two 2 3/8" x 8' pipes, Universal Backing Kit, and Universal 12' Tie-Back	Ea	\$1787	458
5.930.0073.023	T-Frame with 3' Vertical Standoff Includes three 2 3/8" x 8' pipes, Universal Backing Kit, and Universal 12' Tie-Back	Ea	\$1959	505
5.930.0073.024	T-Frame with 3' Vertical Standoff Includes four 2 3/8" x 8' pipes, Universal Backing Kit, and Universal 12' Tie-Back	Ea	\$2130	551
5.930.0073.025	T-Frame with 3' Vertical Standoff Includes five 2 3/8" x 8' pipes, Universal Backing Kit, and Universal 12' Tie-Back	Ea	\$2302	598
5.930.0073.026	T-Frame with 3' Vertical Standoff Includes six 2 3/8" x 8' pipes, Universal Backing Kit, and Universal 12' Tie-Back	Ea	\$2473	644

Notes: 1. Universal Backing Kits fit up to 11" OD rounds and 8" angles; and can mount to vertical or tapered legs up to 8° (1 in 7) slope.  
2. Universal Tie-Backs can attach up to 11" OD members.

Kit #	Description	Qty	List Price	Wt
<b>15' Universal T-Frame Sector with 3 1/2" Rails</b>				
5.930.0074.021	T-Frame with 3' Vertical Standoff Includes Universal Backing Kit, and Universal 12' Tie-Back	Ea	\$1770	489
5.930.0074.022	T-Frame with 3' Vertical Standoff Includes two 2 3/8" x 8' pipes, Universal Backing Kit, and Universal 12' Tie-Back	Ea	\$2148	588
5.930.0074.023	T-Frame with 3' Vertical Standoff Includes three 2 3/8" x 8' pipes, Universal Backing Kit, and Universal 12' Tie-Back	Ea	\$2337	638
5.930.0074.024	T-Frame with 3' Vertical Standoff Includes four 2 3/8" x 8' pipes, Universal Backing Kit, and Universal 12' Tie-Back	Ea	\$2526	687
5.930.0074.025	T-Frame with 3' Vertical Standoff Includes five 2 3/8" x 8' pipes, Universal Backing Kit, and Universal 12' Tie-Back	Ea	\$2715	737
5.930.0074.026	T-Frame with 3' Vertical Standoff Includes six 2 3/8" x 8' pipes, Universal Backing Kit, and Universal 12' Tie-Back	Ea	\$2904	786

Notes: 1. Universal Backing Kits fit up to 11" OD rounds and 8" angles; and can mount to vertical or tapered legs up to 8° (1 in 7) slope.  
2. Universal Tie-Backs can attach up to 11" OD members.



## Antenna Mounts

### Monopole Components

Trylon has a full line of Monopole Components that cover a wide variety of applications. From Universal Ring Assemblies to multi-sector Co-Location Platforms, almost every possibility is here.

All material is hot dip galvanized to weather the harshest environmental conditions.

#### UNIVERSAL MONOPOLE RING ASSEMBLIES

To keep ordering simple, Trylon designed two Universal Monopole Ring Assemblies that attach to a wide range of pole sizes.

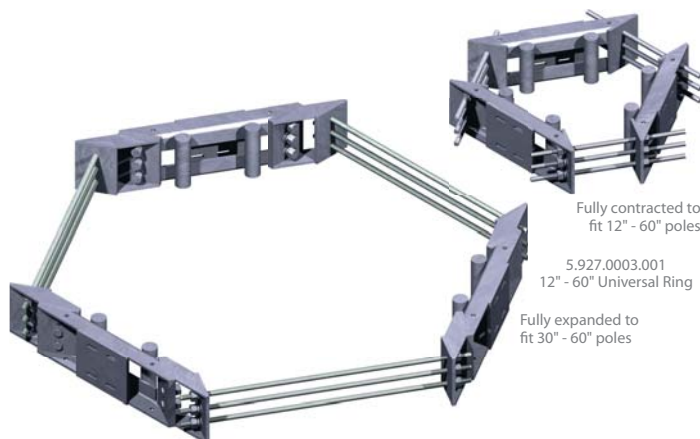
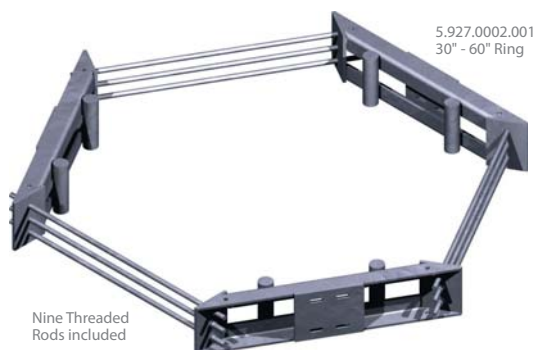
These robust assemblies come complete with three rugged weldments joined by nine heavy-duty threaded rods. The rings can mount to either round poles or multi-sided polygon poles. For attaching, each weldment has slotted holes that can accommodate pipes ranging from 2 3/8" OD to 4 1/2" OD using 1/2" u-bolts, or any other standard Trylon standoff (ordered separately).

In the event that the pole size is unknown, buy the 12" to 60" Universal Monopole Ring Assembly. This kit is truly universal and comes standard with our 12" to 30" Universal Monopole Ring plus an adapter kits that expands the ring for pole sizes 30" to 60". All material is hot dip galvanized.

Quick Guide			
Size	12" to 60" options	Mounts to	12" to 60" round or polygonal poles
Design	One piece weldments	Material	Hot dip galvanized steel
Feature	Installation friendly	Order Separately	Antenna Pipes, Mounts page 32

Kit #	Description	Qty	List Price	Wt
Universal Monopole Ring Assemblies				
5.927.0001.001	12" to 30" Universal Monopole Ring	Ea	\$1012	225
5.927.0002.001	30" to 60" Universal Monopole Ring	Ea	\$1290	285
5.927.0003.001	12" to 60" Universal Monopole Ring	Ea	\$1827	395
Adapter Kit				
5.927.0003.100	Small to Large Adapter Kit*	Ea	\$490	119

\*Note: Order the 3/4" x 42" threaded rods, if required, separately on page 94.



**Trylon** 21 South Field Drive, Elmira, ON N3B 0A6

P: 519.669.5421 F: 519.669.8912 E: info@trylon.com W: www.trylon.com

## Antenna Mounts

### Monopole Components continued

#### MONOPOLE PIPE MOUNT ASSEMBLIES

These Standoff Assemblies mount directly to Universal Ring Assemblies (ordered separately) through the included 1/2" A325 hardware.

Standard standoffs are available in five lengths: 1', 2', 3', 3½' or 6½'. End pipes (ordered separately) ranging from 2 3/8" OD to 4½" OD can be mounted vertically or horizontally using 1/2" u-bolts (ordered separately) through the eight slotted holes at the mounting end of the standoff.

Adjustable standoffs are available in two lengths, 3' and 4'. They both come with a 4½" OD x 18" long mounting pipe that are typically combined with t-arms (sold separately).

Single arm standoffs are available in two lengths, 2' and 3' and are open-ended designs utilizing a 3½" OD pipe.

Note: Even the standard standoffs on pages 2 to 7 can be used as they will also attach to the universal ring weldment's hole pattern.

#### MONOPOLE KNEE BRACE ASSEMBLIES

Knee Braces are ideal for providing additional lateral support at 60° angles between two or three adjacent sectors. Five lengths are available: 44", 60", 72", 78" and 108", and come complete with four 1/2" u-bolts that fit 3½" OD pipes. Pipes ranging from 2 3/8" OD to 4½" OD can be accommodated using 1/2" hardware (order separately).

All material hot dip galvanized.

Quick Guide			
Size	14 options	Mounts to	Universal Ring Kits
Design	One piece weldments	Material	Hot dip galvanized steel
Feature	Installation friendly	Order Separately	Universal Rings or Antenna Pipes



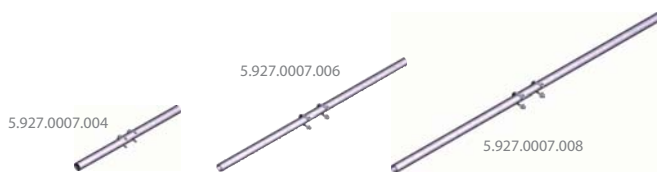
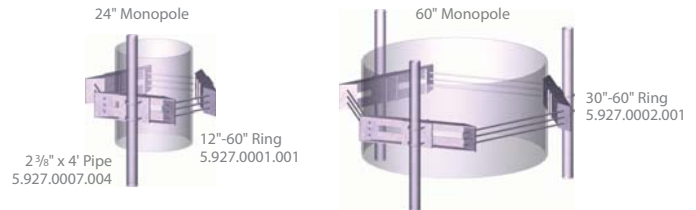
Kit #	Description	Qty	List Price	Wt
<b>Monopole Standoff Assemblies</b>				
5.927.0005.001	1' Monopole Standoff Kit	Ea	\$109	23
5.927.0005.002	2' Monopole Standoff Kit	Ea	\$128	31
5.927.0005.003	3' Monopole Standoff Kit	Ea	\$148	38
5.927.0005.035	3½' Monopole Standoff Kit	Ea	\$157	42
5.927.0005.065	6½' Monopole Standoff Kit	Ea	\$289	88
5.927.0005.103	3' Adjustable Monopole Standoff Kit	Ea	\$179	46
5.927.0005.104	4' Adjustable Monopole Standoff Kit	Ea	\$199	54
5.927.0012.002	2' Single Arm Monopole Standoff Kit	Ea	\$94	22
5.927.0012.003	3' Single Arm Monopole Standoff Kit	Ea	\$114	30
<b>Monopole Knee Brace Assemblies</b>				
5.927.0006.004	44" (60°) Knee Brace Kit	Ea	\$197	48
5.927.0006.005	60" (60°) Knee Brace Kit	Ea	\$225	58
5.927.0006.006	72" (60°) Knee Brace Kit	Ea	\$258	66
5.927.0006.007	78" (60°) Knee Brace Kit	Ea	\$261	70
5.927.0006.009	108" (60°) Knee Brace Kit	Ea	\$429	120

## Antenna Mounts

### Monopole Components continued

#### MONOPOLE PIPE MOUNT ASSEMBLIES

These Pipe Mount Assemblies can attach directly to Ring Assemblies or Standoffs (ordered separately) using two accompanying 1/2" u-bolt assemblies. If straddling two Ring Assemblies, e.g. dishes 8' and larger, choose from our kits that come with four 1/2" u-bolt assemblies.



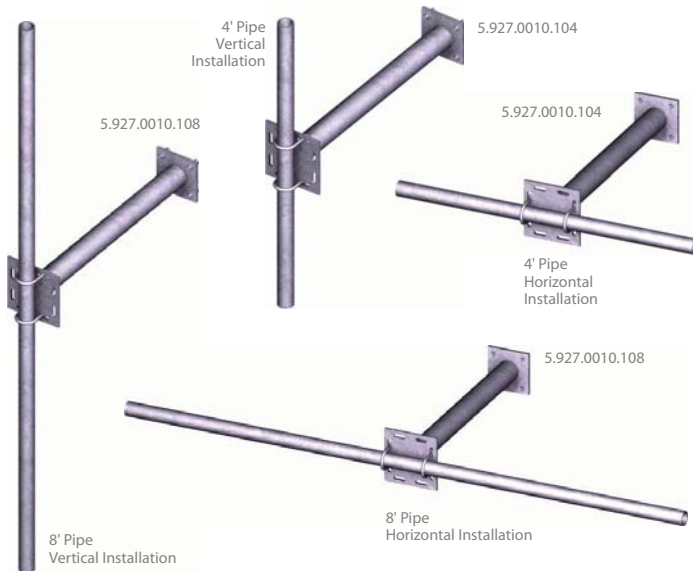
Kit #	Description	Qty	List Price	Wt
<b>2 3/8" Monopole Pipe Mount Assemblies</b>				
5.927.0007.004	2 3/8" x 4' Pipe with two u-bolts	Ea	\$58	17
5.927.0007.006	2 3/8" x 6' Pipe with two u-bolts	Ea	\$77	25
5.927.0007.008	2 3/8" x 8' Pipe with two u-bolts	Ea	\$96	33
5.927.0007.012	2 3/8" x 12' Pipe with two u-bolts	Ea	\$133	48
5.927.0007.015	2 3/8" x 15' Pipe with two u-bolts	Ea	\$162	59
<b>3 1/2" Monopole Pipe Mount Assemblies</b>				
5.927.0008.012	3 1/2" x 12' Pipe with two u-bolts	Ea	\$261	19
5.927.0008.014	3 1/2" x 14' Pipe with two u-bolts	Ea	\$300	26
5.927.0008.015	3 1/2" x 15' Pipe with two u-bolts	Ea	\$320	34
5.927.0008.017	3 1/2" x 17' Pipe with two u-bolts	Ea	\$359	49
5.927.0008.021	3 1/2" x 21' Pipe with two u-bolts	Ea	\$436	61
<b>4 1/2" Monopole Pipe Mount Assemblies</b>				
5.927.0009.004	4 1/2" x 4' Pipe with two u-bolts	Ea	\$142	98
5.927.0009.006	4 1/2" x 6' Pipe with two u-bolts	Ea	\$198	113
5.927.0009.008	4 1/2" x 8' Pipe with two u-bolts	Ea	\$252	121
5.927.0009.010	4 1/2" x 10' Pipe with two u-bolts	Ea	\$308	137
5.927.0009.012	4 1/2" x 12' Pipe with two u-bolts	Ea	\$363	169

Kit #	Description	Qty	List Price	Wt
<b>2 3/8" Monopole Pipe Mount Assemblies</b>				
5.927.0007.404	2 3/8" x 4' Pipe with four u-bolts	Ea	\$74	99
5.927.0007.406	2 3/8" x 6' Pipe with four u-bolts	Ea	\$92	115
5.927.0007.408	2 3/8" x 8' Pipe with four u-bolts	Ea	\$111	123
5.927.0007.412	2 3/8" x 12' Pipe with four u-bolts	Ea	\$148	139
5.927.0007.415	2 3/8" x 15' Pipe with four u-bolts	Ea	\$177	171
<b>3 1/2" Monopole Pipe Mount Assemblies</b>				
5.927.0008.412	3 1/2" x 12' Pipe with four u-bolts	Ea	\$281	48
5.927.0008.414	3 1/2" x 14' Pipe with four u-bolts	Ea	\$320	70
5.927.0008.415	3 1/2" x 15' Pipe with four u-bolts	Ea	\$340	93
5.927.0008.417	3 1/2" x 17' Pipe with four u-bolts	Ea	\$380	116
5.927.0008.421	3 1/2" x 21' Pipe with four u-bolts	Ea	\$456	138
<b>4 1/2" Monopole Pipe Mount Assemblies</b>				
5.927.0009.404	4 1/2" x 4' Pipe with four u-bolts	Ea	\$164	50
5.927.0009.406	4 1/2" x 6' Pipe with four u-bolts	Ea	\$220	73
5.927.0009.408	4 1/2" x 8' Pipe with four u-bolts	Ea	\$274	95
5.927.0009.410	4 1/2" x 10' Pipe with four u-bolts	Ea	\$330	118
5.927.0009.412	4 1/2" x 12' Pipe with four u-bolts	Ea	\$385	141

**Trylon** 21 South Field Drive, Elmira, ON N3B 0A6

P: 519.669.5421 F: 519.669.8912 E: info@trylon.com W: www.trylon.com

## Antenna Mounts



### Monopole Standoffs with Pipe Mount

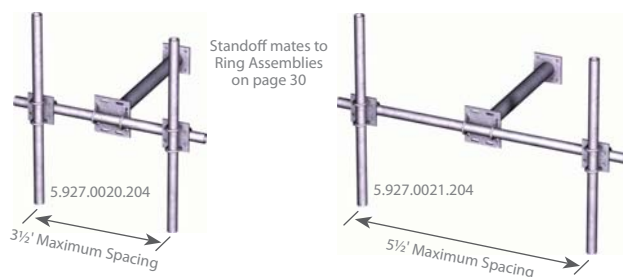
These pre-assembled kits are typically used for single antenna systems, but can also be used as part of a horizontal system. Each kit comes standard with a 3' standoff, a 2 $\frac{3}{8}$ " OD pipe, and all the necessary hardware to connect vertically or horizontally to our Universal Ring Assemblies (sold separately).



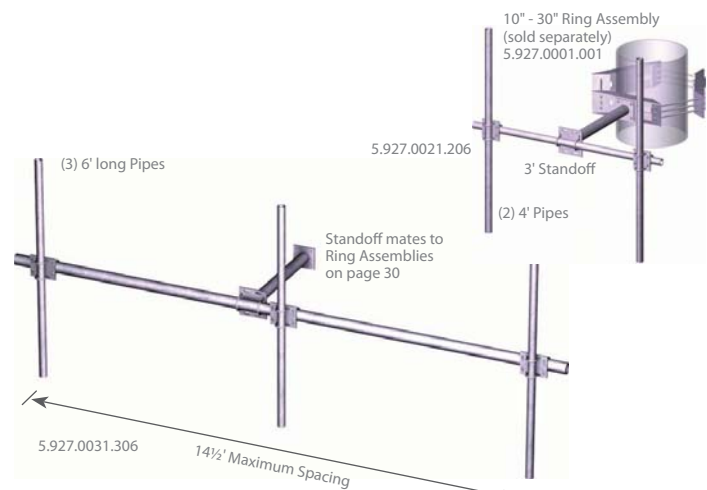
Kit #	Description	Qty	List Price	Wt
<b>Universal Monopole Ring Assemblies</b>				
5.927.0010.104	3' Standoff with a 2 $\frac{3}{8}$ " x 4' Pipe	Ea	\$212	55
5.927.0010.106	3' Standoff with a 2 $\frac{3}{8}$ " x 6' Pipe	Ea	\$231	63
5.927.0010.108	3' Standoff with a 2 $\frac{3}{8}$ " x 8' Pipe	Ea	\$251	71
5.927.0010.112	3' Standoff with a 2 $\frac{3}{8}$ " x 12' Pipe	Ea	\$289	86

### Monopole Wireless Arm Assemblies

Monopole Wireless Arm Assemblies are ideal for single sector applications and can support up to three antennas. They are offered in 4', 6', 12', and 15' over all widths. The two shorter arms utilize a 2 $\frac{3}{8}$ " OD cross arm, whereas the two longer options have a 3 $\frac{1}{2}$ " OD cross arm. Each kit comes with all necessary hardware for installation to our Universal Monopole Ring Assemblies; sold separately on page 30. All material is hot dip galvanized to weather the elements.



Kit #	Description	Qty	List Price	Wt
<b>Wireless Arm Assemblies with two Pipes</b>				
5.927.0020.204	4' Wireless Arm with 3' Standoff and two 2 $\frac{3}{8}$ " x 4' pipes	Ea	\$502	102
5.927.0020.206	4' Wireless Arm with 3' Standoff and two 2 $\frac{3}{8}$ " x 6' pipes	Ea	\$552	117
5.927.0021.204	6' Wireless Arm with 3' Standoff and two 2 $\frac{3}{8}$ " x 4' pipes	Ea	\$527	110
5.927.0021.206	6' Wireless Arm with 3' Standoff and two 2 $\frac{3}{8}$ " x 6' pipes	Ea	\$576	125



Kit #	Description	Qty	List Price	Wt
<b>Wireless Arm Assemblies with three Pipes</b>				
5.927.0030.304	12' Wireless Arm with 3' Standoff and three 2 $\frac{3}{8}$ " x 4' pipes	Ea	\$918	210
5.927.0030.306	12' Wireless Arm with 3' Standoff and three 2 $\frac{3}{8}$ " x 6' pipes	Ea	\$993	233
5.927.0030.308	12' Wireless Arm with 3' Standoff and three 2 $\frac{3}{8}$ " x 8' pipes	Ea	\$1067	256
5.927.0031.304	15' Wireless Arm with 3' Standoff and three 2 $\frac{3}{8}$ " x 4' pipes	Ea	\$997	234
5.927.0031.306	15' Wireless Arm with 3' and three 2 $\frac{3}{8}$ " x 6' pipes	Ea	\$1071	257
5.927.0031.308	15' Wireless Arm with 3' Standoff and three 2 $\frac{3}{8}$ " x 8' pipes	Ea	\$1146	280



## Antenna Mounts

### Monopole T-Arm Kits

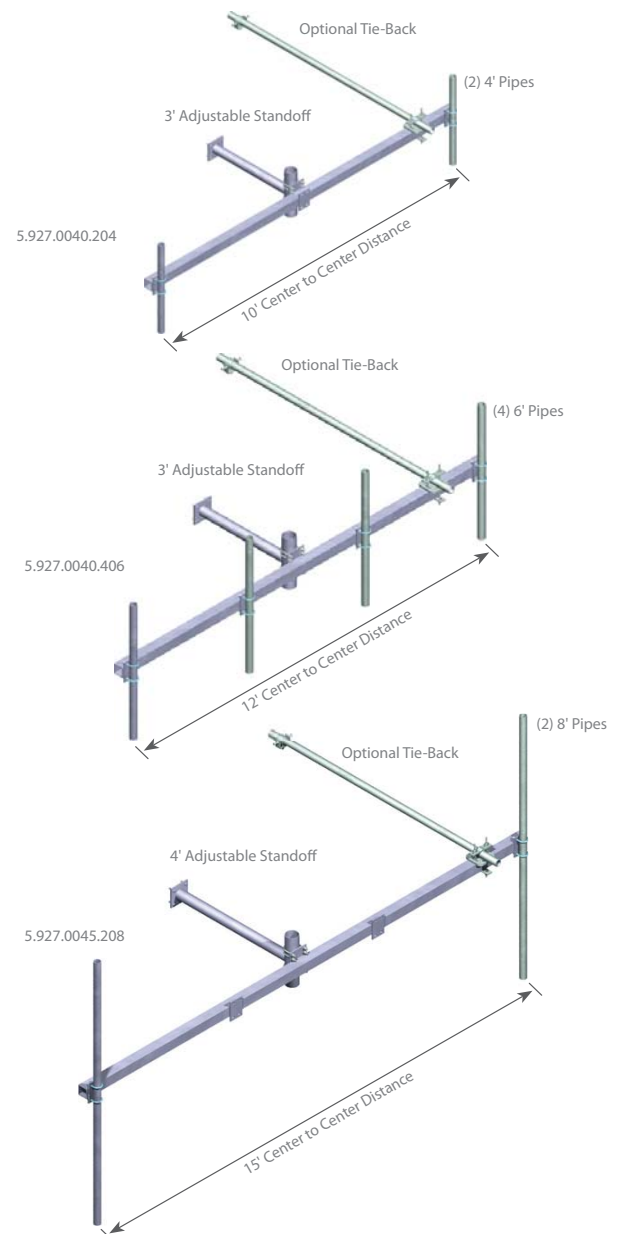
Monopole T-Arm Kits are ideal for easy sector installation. They come standard in three sizes; 10', 12' and 15' outside pipe centered distance, and complete with an adjustable standoff and all hardware necessary to attach to our standard universal rings assemblies (sold separately). Depending on your antenna size, pick from our three available 2<sup>3</sup>/<sub>8</sub>" pipe lengths, 4', 6' and 8' that easily connect via 1/2" u-bolts to our welded connection plates.

All material is hot dip galvanized to weather the elements.

#### Quick Guide

Size	10', 12', or 15' face	Mounts to	Universal Ring Mounts
Design	Single sector	Material	Hot dip galvanized steel
Feature	Simplified installation	Order Separately	Rings Mounts, Work Platforms, page 30

Kit #	Description	Qty	List Price	Wt
<b>10" T-Arm Kits</b>				
5.927.0040.204	10' T-Arm c/w 3' Adjustable Standoff and two 2 <sup>3</sup> / <sub>8</sub> " x 4' pipes	Ea	\$722	192
5.927.0040.206	10' T-Arm c/w 3' Adjustable Standoff and two 2 <sup>3</sup> / <sub>8</sub> " x 6' pipes	Ea	\$763	208
5.927.0040.208	10' T-Arm c/w 3' Adjustable Standoff and two 2 <sup>3</sup> / <sub>8</sub> " x 8' pipes	Ea	\$803	223
5.927.0040.304	10' T-Arm c/w 3' Adjustable Standoff and three 2 <sup>3</sup> / <sub>8</sub> " x 4' pipes	Ea	\$785	209
5.927.0040.306	10' T-Arm c/w 3' Adjustable Standoff and three 2 <sup>3</sup> / <sub>8</sub> " x 6' pipe	Ea	\$846	232
5.927.0040.308	10' T-Arm c/w 3' Adjustable Standoff and three 2 <sup>3</sup> / <sub>8</sub> " x 8' pipe	Ea	\$907	255
<b>12" T-Arm Kits</b>				
5.927.0042.204	12' T-Arm c/w 3' Adjustable Standoff and two 2 <sup>3</sup> / <sub>8</sub> " x 4' pipes	Ea	\$790	213
5.927.0042.206	12' T-Arm c/w 3' Adjustable Standoff and two 2 <sup>3</sup> / <sub>8</sub> " x 6' pipes	Ea	\$831	229
5.927.0042.208	12' T-Arm c/w 3' Adjustable Standoff and two 2 <sup>3</sup> / <sub>8</sub> " x 8' pipes	Ea	\$872	244
5.927.0042.404	12' T-Arm c/w 3' Adjustable Standoff and four 2 <sup>3</sup> / <sub>8</sub> " x 4' pipes	Ea	\$916	247
5.927.0042.406	12' T-Arm c/w 3' Adjustable Standoff and four 2 <sup>3</sup> / <sub>8</sub> " x 6' pipe	Ea	\$998	278
5.927.0042.408	12' T-Arm c/w 3' Adjustable Standoff and four 2 <sup>3</sup> / <sub>8</sub> " x 8' pipe	Ea	\$1079	309
<b>15" T-Arm Kits</b>				
5.927.0045.204	15' T-Arm c/w 3' Adjustable Standoff and two 2 <sup>3</sup> / <sub>8</sub> " x 4' pipes	Ea	\$890	247
5.927.0045.206	15' T-Arm c/w 3' Adjustable Standoff and two 2 <sup>3</sup> / <sub>8</sub> " x 6' pipes	Ea	\$931	262
5.927.0045.208	15' T-Arm c/w 3' Adjustable Standoff and two 2 <sup>3</sup> / <sub>8</sub> " x 8' pipes	Ea	\$972	278
5.927.0045.404	15' T-Arm c/w 3' Adjustable Standoff and four 2 <sup>3</sup> / <sub>8</sub> " x 4' pipes	Ea	\$1016	281
5.927.0045.406	15' T-Arm c/w 3' Adjustable Standoff and four 2 <sup>3</sup> / <sub>8</sub> " x 6' pipe	Ea	\$1098	311
5.927.0045.408	15' T-Arm c/w 3' Adjustable Standoff and four 2 <sup>3</sup> / <sub>8</sub> " x 8' pipe	Ea	\$1179	342

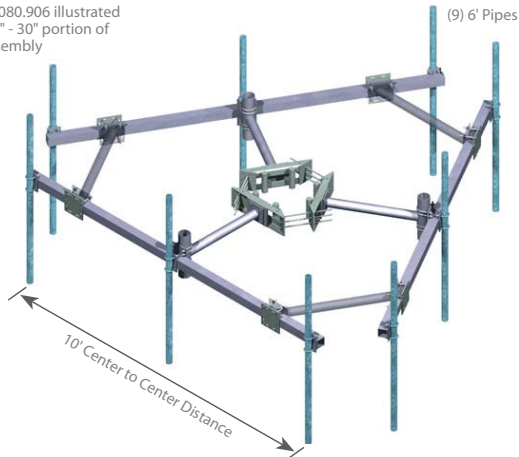


**Trylon** 21 South Field Drive, Elmira, ON N3B 0A6

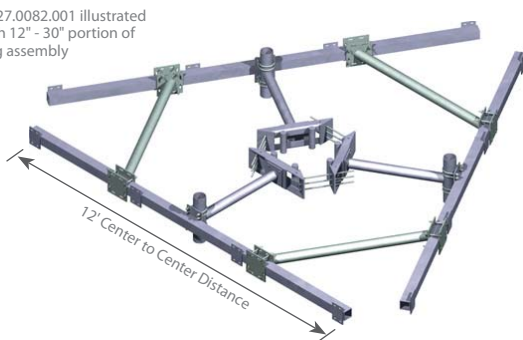
P: 519.669.5421 F: 519.669.8912 E: info@trylon.com W: www.trylon.com

## Antenna Mounts

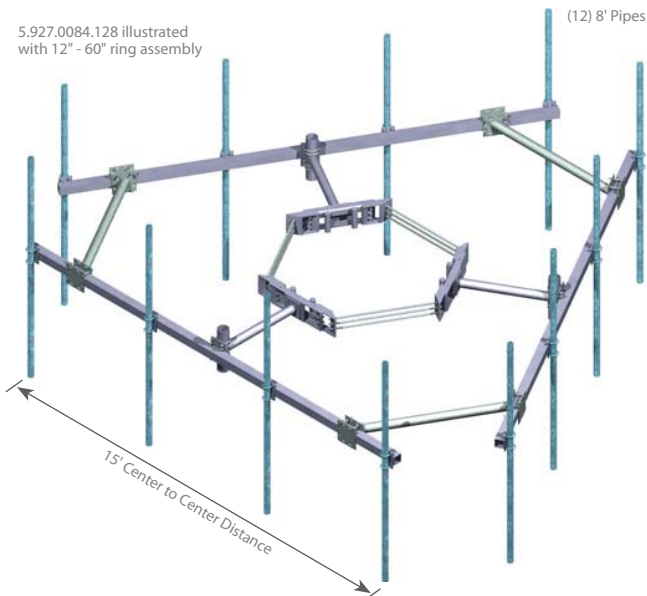
5.927.0080.906 illustrated with 12" - 30" portion of ring assembly



5.927.0082.001 illustrated with 12" - 30" portion of ring assembly



5.927.0084.128 illustrated with 12" - 60" ring assembly



### Monopole Co-Location T-Frame Kits

Monopole T-Frame Kits are a complete co-location solution. They come standard with our 12" to 60" universal ring assembly, three adjustable standoffs that allow sector orientation, and three HSS cross arms with welded connection plates available in three overall widths: 10', 12' and 15' (outside centered lengths). Other options include 2<sup>3</sup>/<sub>8</sub>" mounting pipes (six, nine or twelve pipes) and mounting pipe lengths (6' or 8').

All material is hot dip galvanized to resist corrosion.

#### Quick Guide

Size	10', 12', or 15' face	Mounts to	12" - 60" round or polygonal poles
Design	Three sector	Material	Hot dip galvanized steel
Feature	Complete co-location kit	Order Separately	Pipe Mounts, Work Platforms, page 32

Kit #	Description	Qty	List Price	Wt
<b>10" T-Frame Kits</b>				
5.927.0080.001	10' T-Frame Kit fits 12" to 60" OD poles	Ea	\$3678	870
5.927.0080.606	10' T-Frame Kit fits 12" to 60" OD poles with six 2 <sup>3</sup> / <sub>8</sub> " x 6' pipes	Ea	\$4143	1018
5.927.0080.608	10' T-Frame Kit fits 12" to 60" OD poles with six 2 <sup>3</sup> / <sub>8</sub> " x 8' pipes	Ea	\$4174	1064
5.927.0080.906	10' T-Frame Kit fits 12" to 60" OD poles with nine 2 <sup>3</sup> / <sub>8</sub> " x 6' pipes	Ea	\$4375	1091
5.927.0080.908	10' T-Frame Kit fits 12" to 60" OD poles with nine 2 <sup>3</sup> / <sub>8</sub> " x 8' pipes	Ea	\$4410	1161
<b>12" T-Frame Kits</b>				
5.927.0082.001	12' T-Frame Kit fits 12" to 60" OD poles	Ea	\$4109	932
5.927.0082.606	12' T-Frame Kit fits 12" to 60" OD poles with six 2 <sup>3</sup> / <sub>8</sub> " x 6' pipes	Ea	\$4575	1080
5.927.0082.608	12' T-Frame Kit fits 12" to 60" OD poles with six 2 <sup>3</sup> / <sub>8</sub> " x 8' pipes	Ea	\$4598	1126
5.927.0082.126	12' T-Frame Kit fits 12" to 60" OD poles with twelve 2 <sup>3</sup> / <sub>8</sub> " x 6' pipes	Ea	\$5039	1228
5.927.0082.128	12' T-Frame Kit fits 12" to 60" OD poles with twelve 2 <sup>3</sup> / <sub>8</sub> " x 8' pipes	Ea	\$5085	1320
<b>15" T-Frame Kits</b>				
5.927.0084.001	15' T-Frame Kit fits 12" to 60" OD poles	Ea	\$4200	1009
5.927.0084.606	15' T-Frame Kit fits 12" to 60" OD poles with six 2 <sup>3</sup> / <sub>8</sub> " x 6' pipes	Ea	\$4665	1157
5.927.0084.608	15' T-Frame Kit fits 12" to 60" OD poles with six 2 <sup>3</sup> / <sub>8</sub> " x 8' pipes	Ea	\$4689	1203
5.927.0084.126	15' T-Frame Kit fits 12" to 60" OD poles with twelve 2 <sup>3</sup> / <sub>8</sub> " x 6' pipes	Ea	\$5130	1305
5.927.0084.128	15' T-Frame Kit fits 12" to 60" OD poles with twelve 2 <sup>3</sup> / <sub>8</sub> " x 8' pipes	Ea	\$5178	1397

## Antenna Mounts

### Low Profile Co-Location Platforms

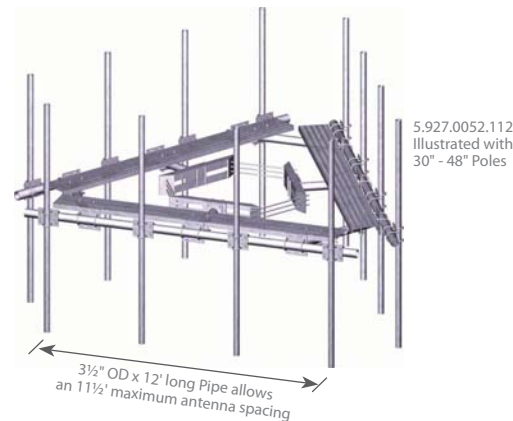
Low Profile Platforms are the most visually appealing co-location monopole solution. They are made standard with a universal ring assembly and three of each of the following: standoffs, knee braces and cross arms. Other options include 2 $\frac{3}{8}$ " x 8' mounting pipes (six, nine or twelve pipes), 12' or 15' overall widths for your antennas, and single or double grated

walkways for worker access. These walkways are uniquely designed (in-line with platform face) for adequate space for climbing and transmission line installation.

All material is hot dip galvanized to weather the elements.

Kit #	Description	Qty	List Price	Wt
<b>12' Platforms - fits 12" to 30" OD Poles</b>				
5.927.0050.001	12' Platform fits 12" to 30" Poles	Ea	\$2925	774
5.927.0050.006	12' Platform fits 12" to 30" Poles With six 2 $\frac{3}{8}$ " x 8' pipes	Ea	\$3768	1014
5.927.0050.009	12' Platform fits 12" to 30" Poles With nine 2 $\frac{3}{8}$ " x 8' pipes	Ea	\$4189	1135
5.927.0050.012	12' Platform fits 12" to 30" Poles With twelve 2 $\frac{3}{8}$ " x 8' pipes	Ea	\$4610	1255
5.927.0050.101	12' Platform fits 12" to 30" Poles With three walkways	Ea	\$3827	984
5.927.0050.106	12' Platform fits 12" to 30" Poles With walkways and six 8' pipes	Ea	\$4670	1224
5.927.0050.109	12' Platform fits 12" to 30" Poles With walkways and nine 8' pipes	Ea	\$5091	1344
5.927.0050.112	12' Platform fits 12" to 30" Poles With walkways and twelve 8' pipes	Ea	\$5512	1464
5.927.0050.201	12' Platform fits 12" to 30" Poles With three double walkways	Ea	\$4940	1261
5.927.0050.206	12' Platform fits 12" to 30" Poles With dbl. walkways and six 8' pipes	Ea	\$5782	1501
5.927.0050.209	12' Platform fits 12" to 30" Poles With dbl. walkways and nine 8' pipes	Ea	\$6203	1621
5.927.0050.212	12' Platform fits 12" to 30" Poles With dbl. walkways and twelve 8' pipes	Ea	\$6624	1742
<b>12' Platforms - fits 30" to 48" OD Poles</b>				
5.927.0052.001	12' Platform fits 30" to 48" Poles	Ea	\$3147	811
5.927.0052.006	12' Platform fits 30" to 48" Poles With six 2 $\frac{3}{8}$ " x 8' pipes	Ea	\$3989	1051
5.927.0052.009	12' Platform fits 30" to 48" Poles With nine 2 $\frac{3}{8}$ " x 8' pipes	Ea	\$4410	1171
5.927.0052.012	12' Platform fits 30" to 48" Poles With twelve 2 $\frac{3}{8}$ " x 8' pipes	Ea	\$4832	1292
5.927.0052.101	12' Platform fits 30" to 48" Poles With three walkways	Ea	\$4049	1020
5.927.0052.106	12' Platform fits 30" to 48" Poles With walkways and six 8' pipes	Ea	\$4891	1261
5.927.0052.109	12' Platform fits 30" to 48" Poles With walkways and nine 8' pipes	Ea	\$5312	1381
5.927.0052.112	12' Platform fits 30" to 48" Poles With walkways and twelve 8' pipes	Ea	\$5733	1501
5.927.0052.201	12' Platform fits 30" to 48" Poles With three double walkways	Ea	\$5237	1333
5.927.0052.206	12' Platform fits 30" to 48" Poles With dbl. walkways and six 8' pipes	Ea	\$6079	1574
5.927.0052.209	12' Platform fits 30" to 48" Poles With dbl. walkways and nine 8' pipes	Ea	\$6500	1694
5.927.0052.212	12' Platform fits 30" to 48" Poles With dbl. walkways and twelve 8' pipes	Ea	\$6921	1814

(12) 8' Pipes



5.927.0052.112 Illustrated with 30" - 48" Poles

5.927.0050.001



12' Platform fits 12" - 30" Poles

5.927.0050.101



12' Platform fits 12" - 30" Poles and has single walkways

Kit #	Description	Qty	List Price	Wt
<b>12' Platforms - fits 48" to 60" OD Poles</b>				
5.927.0054.001	12' Platform fits 48" to 60" Poles	Ea	\$3323	843
5.927.0054.006	12' Platform fits 48" to 60" Poles With six 2 $\frac{3}{8}$ " x 8' pipes	Ea	\$4189	1083
5.927.0054.009	12' Platform fits 48" to 60" Poles With nine 2 $\frac{3}{8}$ " x 8' pipes	Ea	\$4622	1203
5.927.0054.012	12' Platform fits 48" to 60" Poles With twelve 2 $\frac{3}{8}$ " x 8' pipes	Ea	\$5055	1323
5.927.0054.101	12' Platform fits 48" to 60" Poles With three walkways	Ea	\$4250	1052
5.927.0054.106	12' Platform fits 48" to 60" Poles With walkways and six 8' pipes	Ea	\$5116	1293
5.927.0054.109	12' Platform fits 48" to 60" Poles With walkways and nine 8' pipes	Ea	\$5549	1413
5.927.0054.112	12' Platform fits 48" to 60" Poles With walkways and twelve 8' pipes	Ea	\$5982	1533
5.927.0054.201	12' Platform fits 48" to 60" Poles With three double walkways	Ea	\$5354	1322
5.927.0054.206	12' Platform fits 48" to 60" Poles With dbl. walkways and six 8' pipes	Ea	\$6220	1562
5.927.0054.209	12' Platform fits 48" to 60" Poles With dbl. walkways and nine 8' pipes	Ea	\$6653	1682
5.927.0054.212	12' Platform fits 48" to 60" Poles With dbl. walkways and twelve 8' pipes	Ea	\$7086	1802

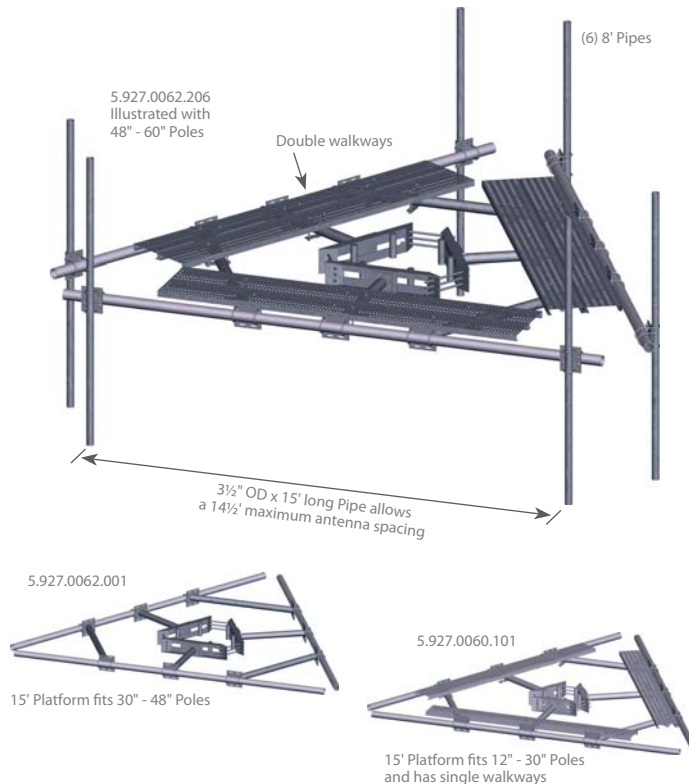
**Trylon** 21 South Field Drive, Elmira, ON N3B 0A6

P: 519.669.5421 F: 519.669.8912 E: info@trylon.com W: www.trylon.com



## Antenna Mounts

### Low Profile Co-Location Platforms continued



Kit #	Description	Qty	List Price	Wt
<b>15' Platforms - fits 48" to 60" OD Poles</b>				
5.927.0064.001	15' Platform fits 48" to 60" Poles	Ea	\$3422	914
5.927.0064.006	15' Platform fits 48" to 60" Poles With six 2 3/8" x 8' pipes	Ea	\$4265	1155
5.927.0064.009	15' Platform fits 48" to 60" Poles With nine 2 3/8" x 8' pipes	Ea	\$4686	1275
5.927.0064.012	15' Platform fits 48" to 60" Poles With twelve 2 3/8" x 8' pipes	Ea	\$5107	1395
5.927.0064.101	15' Platform fits 48" to 60" Poles With three walkways	Ea	\$4324	1124
5.927.0064.106	15' Platform fits 48" to 60" Poles With walkways and six 8' pipes	Ea	\$5166	1364
5.927.0064.109	15' Platform fits 48" to 60" Poles With walkways and nine 8' pipes	Ea	\$5588	1484
5.927.0064.112	15' Platform fits 48" to 60" Poles With walkways and twelve 8' pipes	Ea	\$6009	1605
5.927.0064.201	15' Platform fits 48" to 60" Poles With three double walkways	Ea	\$5399	1393
5.927.0064.206	15' Platform fits 48" to 60" Poles With dbl. walkways and six 8' pipes	Ea	\$6241	1634
5.927.0064.209	15' Platform fits 48" to 60" Poles With dbl. walkways and nine 8' pipes	Ea	\$6662	1754
5.927.0064.212	15' Platform fits 48" to 60" Poles With dbl. walkways and twelve 8' pipes	Ea	\$7083	1874

#### Quick Guide

Size	12' or 15' face	Mounts to	12" - 60" round or polygonal poles
Design	In-line Grated Platforms	Material	Hot dip galvanized steel
Feature	Complete co-location kit	Order Separately	Extra Pipe Mounts, pg 90

Kit #	Description	Qty	List Price	Wt
<b>15' Platforms - fits 12" to 30" OD Poles</b>				
5.927.0060.001	15' Platform fits 12" to 30" Poles	Ea	\$3228	889
5.927.0060.006	15' Platform fits 12" to 30" Poles With six 2 3/8" x 8' pipes	Ea	\$4070	1130
5.927.0060.009	15' Platform fits 12" to 30" Poles With nine 2 3/8" x 8' pipes	Ea	\$4491	1250
5.927.0060.012	15' Platform fits 12" to 30" Poles With twelve 2 3/8" x 8' pipes	Ea	\$4913	1370
5.927.0060.101	15' Platform fits 12" to 30" Poles With three walkways	Ea	\$4130	1099
5.927.0060.106	15' Platform fits 12" to 30" Poles With walkways and six 8' pipes	Ea	\$4972	1339
5.927.0060.109	15' Platform fits 12" to 30" Poles With walkways and nine 8' pipes	Ea	\$5393	1459
5.927.0060.112	15' Platform fits 12" to 30" Poles With walkways and twelve 8' pipes	Ea	\$5814	1580
5.927.0060.201	15' Platform fits 12" to 30" Poles With three double walkways	Ea	\$5129	1332
5.927.0060.206	15' Platform fits 12" to 30" Poles With dbl. walkways and six 8' pipes	Ea	\$5971	1573
5.927.0060.209	15' Platform fits 12" to 30" Poles With dbl. walkways and nine 8' pipes	Ea	\$6392	1693
5.927.0060.212	15' Platform fits 12" to 30" Poles With dbl. walkways and twelve 8' pipes	Ea	\$6813	1813
<b>15' Platforms - fits 30" to 48" OD Poles</b>				
5.927.0062.001	15' Platform fits 30" to 48" Poles	Ea	\$3487	938
5.927.0062.006	15' Platform fits 30" to 48" Poles With six 2 3/8" x 8' pipes	Ea	\$4329	1178
5.927.0062.009	15' Platform fits 30" to 48" Poles With nine 2 3/8" x 8' pipes	Ea	\$4751	1299
5.927.0062.012	15' Platform fits 30" to 48" Poles With twelve 2 3/8" x 8' pipes	Ea	\$5172	1419
5.927.0062.101	15' Platform fits 30" to 48" Poles With three walkways	Ea	\$4389	1148
5.927.0062.106	15' Platform fits 30" to 48" Poles With walkways and six 8' pipes	Ea	\$5231	1388
5.927.0062.109	15' Platform fits 30" to 48" Poles With walkways and nine 8' pipes	Ea	\$5652	1508
5.927.0062.112	15' Platform fits 30" to 48" Poles With walkways and twelve 8' pipes	Ea	\$6074	1628
5.927.0062.201	15' Platform fits 30" to 48" Poles With three double walkways	Ea	\$5426	1405
5.927.0062.206	15' Platform fits 30" to 48" Poles With dbl. walkways and six 8' pipes	Ea	\$6268	1645
5.927.0062.209	15' Platform fits 30" to 48" Poles With dbl. walkways and nine 8' pipes	Ea	\$6689	1766
5.927.0062.212	15' Platform fits 30" to 48" Poles With dbl. walkways and twelve 8' pipes	Ea	\$7110	1886



## Antenna Mounts

### Low Profile Rotatable Spine Mounts

The Low Profile Rotatable Spine Mounts are very similar to our monopole co-location platforms (page 36), but modified to mate to the top of either self-supporting or guyed towers.

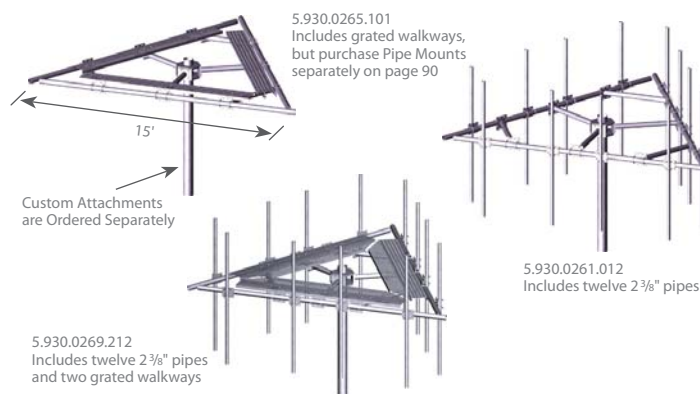
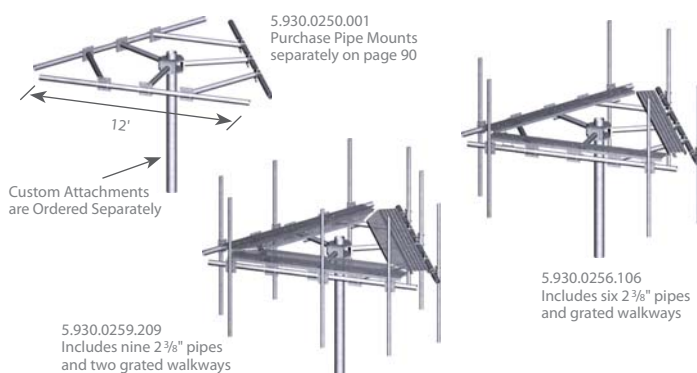
This top mounted solution is offered in standard 12' or 15' widths, and optional items include single or double grated walkways for worker access, and 2 3/8" x 8' antenna pipe mounts (six, nine, or twelve).

SOLD SEPARATELY and CUSTOM MADE are the attachments from the rotatable spine to the tower. Please call us to identify the correct attachment hardware, as this varies for each site.

All material is hot dip galvanized to weather the elements.

#### Quick Guide

Size	12' and 15' overall widths	Mounts to	Top of guyed or self-supporting towers
Design	U-bolt design and welded spine	Material	Hot dip galvanized steel
Feature	Low profile mount	Order Separately	Additional pipe mounts on page 90



Kit #	Description	Qty	List Price	Wt
<b>12' Low Profile Rotatable Spine Assemblies</b>				
5.930.0250.001	12' Low Profile Rotatable Spine Kit	Ea	\$2918	834
5.930.0251.006	12' Low Profile Rotatable Spine Kit with six 2 3/8" x 8' pipes	Ea	\$3761	1074
5.930.0251.009	12' Low Profile Rotatable Spine Kit with nine 2 3/8" x 8' pipes	Ea	\$4182	1194
5.930.0251.012	12' Low Profile Rotatable Spine Kit with twelve 2 3/8" x 8' pipes	Ea	\$4603	1314
<b>12' Low Profile Rotatable Spine – Single Platform Assemblies</b>				
5.930.0255.101	12' Low Profile Spine Platform Kit	Ea	\$3820	1043
5.930.0256.106	12' Low Profile Spine Platform Kit with walkways and six 2 3/8" x 8' pipes	Ea	\$4662	1284
5.930.0256.109	12' Low Profile Spine Platform Kit with walkways and nine 2 3/8" x 8' pipes	Ea	\$5084	1404
5.930.0256.112	12' Low Profile Spine Platform Kit with walkways and twelve 2 3/8" x 8' pipes	Ea	\$5505	1524
<b>12' Low Profile Rotatable Spine – Double Platform Assemblies</b>				
5.930.0258.201	12' Low Profile Spine Platform Kit	Ea	\$4830	1229
5.930.0259.206	12' Low Profile Spine Platform Kit with dbl. walkways and (6) 2 3/8" x 8' pipes	Ea	\$5672	1469
5.930.0259.209	12' Low Profile Spine Platform Kit with dbl. walkways and (9) 2 3/8" x 8' pipes	Ea	\$6093	1589
5.930.0259.212	12' Low Profile Spine Platform Kit with dbl. walkways and (12) 2 3/8" x 8' pipes	Ea	\$6515	1710

Note: Attachment from spine to tower SOLD SEPARATELY.

Kit #	Description	Qty	List Price	Wt
<b>15' Low Profile Rotatable Spine Assemblies</b>				
5.930.0260.001	15' Low Profile Rotatable Spine Kit	Ea	\$3107	905
5.930.0261.006	15' Low Profile Rotatable Spine Kit with six 2 3/8" x 8' pipes	Ea	\$3950	1146
5.930.0261.009	15' Low Profile Rotatable Spine Kit with nine 2 3/8" x 8' pipes	Ea	\$4371	1266
5.930.0261.012	15' Low Profile Rotatable Spine Kit with twelve 2 3/8" x 8' pipes	Ea	\$4792	1386
<b>15' Low Profile Rotatable Spine – Single Platform Assemblies</b>				
5.930.0265.101	15' Low Profile Spine Platform Kit	Ea	\$4009	1115
5.930.0266.106	15' Low Profile Spine Platform Kit with walkways and six 2 3/8" x 8' pipes	Ea	\$4851	1355
5.930.0266.109	15' Low Profile Spine Platform Kit with walkways and nine 2 3/8" x 8' pipes	Ea	\$5273	1475
5.930.0266.112	15' Low Profile Spine Platform Kit with walkways and twelve 2 3/8" x 8' pipes	Ea	\$5694	1596
<b>15' Low Profile Rotatable Spine – Double Platform Assemblies</b>				
5.930.0268.201	15' Low Profile Spine Platform Kit	Ea	\$5019	1301
5.930.0269.206	15' Low Profile Spine Platform Kit with dbl. walkways and (6) 2 3/8" x 8' pipes	Ea	\$5861	1541
5.930.0269.209	15' Low Profile Spine Platform Kit with dbl. walkways and (9) 2 3/8" x 8' pipes	Ea	\$6282	1661
5.930.0269.212	15' Low Profile Spine Platform Kit with dbl. walkways and (12) 2 3/8" x 8' pipes	Ea	\$6704	1781

Note: Attachment from spine to tower SOLD SEPARATELY.

**Trylon** 21 South Field Drive, Elmira, ON N3B 0A6

P: 519.669.5421 F: 519.669.8912 E: info@trylon.com W: www.trylon.com

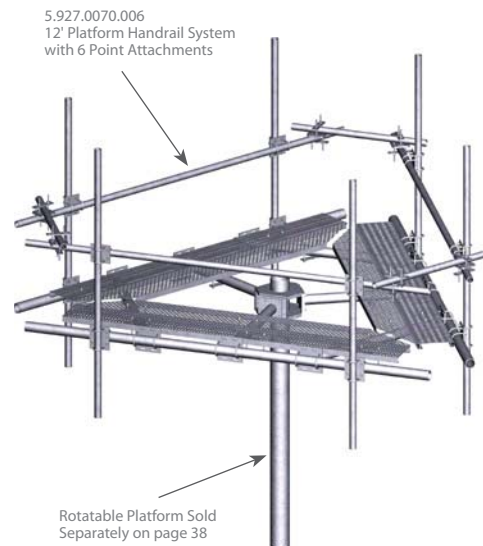
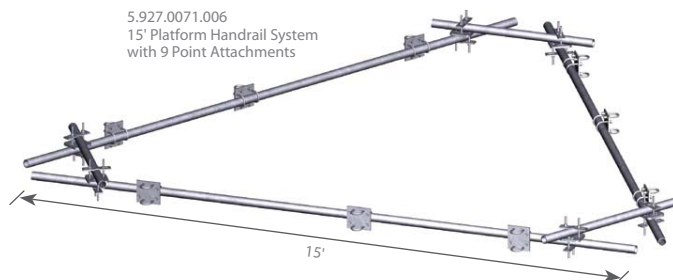
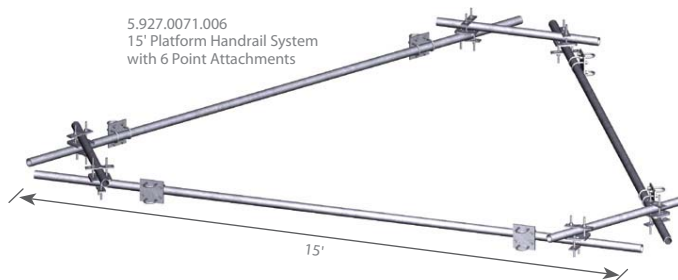
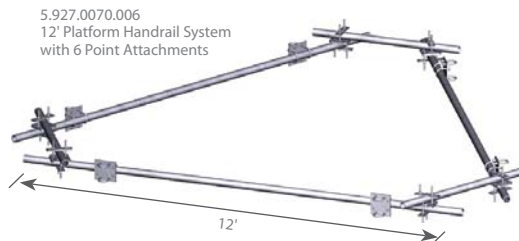
## Antenna Mounts

### Handrails for Low Profile Platforms

Trylon Handrail systems provide an enclosed working area for increased personnel safety, while also adapting both our monopole and rotatable co-location platforms to allow two attachment points for pipe mount kits.

This solution is offered in both 12' and 15' widths, and in various point attachment applications (six, nine, or twelve) that connect to our standard 2 $\frac{3}{8}$ " OD pipes.

All parts are hot dip galvanized to provide corrosion protection in all environmental conditions.



#### Quick Guide

Size	12' and 15' overall widths	Mounts to	Low Profile Platforms (Monopole or Rotatable)
Design	U-bolt design	Material	Hot dip galvanized steel
Feature	Allows 2 pipe mounting points	Order Separately	Low Profile Platforms on pages 36-37

Kit #	Description	Qty	List Price	Wt
<b>12' Platform Handrail Systems</b>				
5.927.0070.006	12' Platform Handrail – 6 Point	Ea	\$1243	312
5.927.0070.009	12' Platform Handrail – 9 Point	Ea	\$1367	336
5.927.0070.012	12' Platform Handrail – 12 Point	Ea	\$1490	360
<b>15' Platform Handrail Systems</b>				
5.927.0071.006	15' Platform Handrail – 6 Point	Ea	\$1273	324
5.927.0071.009	15' Platform Handrail – 9 Point	Ea	\$1396	347
5.927.0071.012	15' Platform Handrail – 12 Point	Ea	\$1520	371

### Rotatable Spine Mounting Attachments

Each Rotatable Spine Mounting Attachment is custom made to fit your tower. Depending on the face width, leg size, and if horizontal members exist. Trylon can customize a solution to fit your needs.

Please call us for more information on how to attach to your tower.

## Antenna Mounts

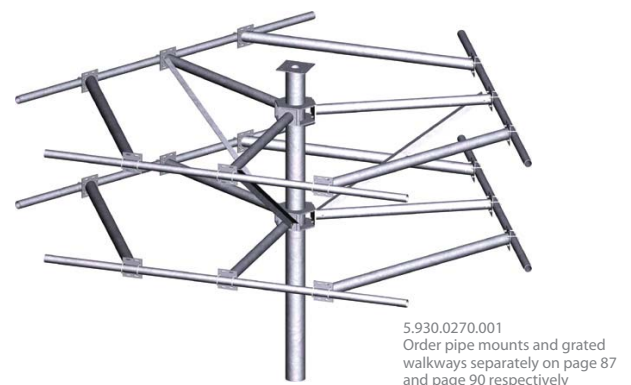
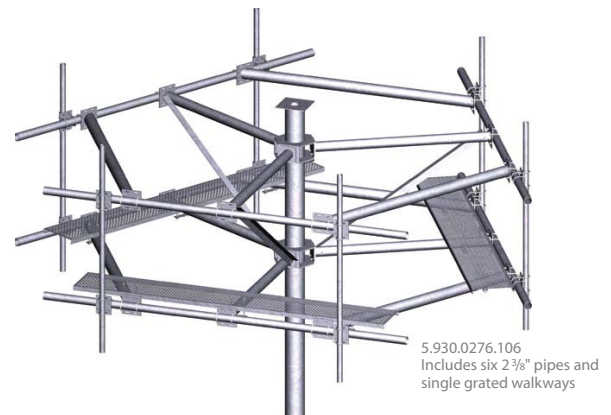
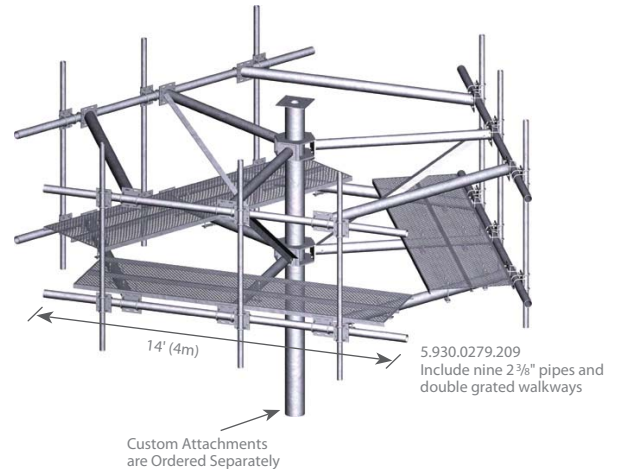
### 2-Level Rotatable Spine Mounts

The 2-Level Rotatable Spine Mounts are very similar to the low profile rotatable spine mounts in that they mate to the top of either self-supporting or guyed towers. However, the additional level of horizontal attachment allows for both larger face widths (antenna separation) and overall increased antenna loading capability.

This top mounted solution is offered in three standard widths: 14' (4m), 17' (5m) and 21' (6m). Single or double grated walkways for worker access, can be added along with six/nine/twelve 2 3/8" x 10' antenna pipe mounts. If longer pipes are required, then the basic model can be purchased along with longer pipe mounts offered on page 90.

SOLD SEPARATELY and CUSTOM MADE are the attachments from the rotatable spine to the tower. Please call us to identify the correct attachment hardware, as this varies for each site.

All material is hot dip galvanized to weather the elements.



Quick Guide			
Size	14', 17', 21' widths (4m, 5m, 6m widths)	Mounts to	Top of guyed or self-supporting towers
Design	U-bolt design and welded spine	Material	Hot dip galvanized steel
Feature	Multi-Level Sector Application	Order Separately	Additional pipe mounts on page 90

Kit #	Description	Qty	List Price	Wt
<b>14' (4m) 2-Level Rotatable Spine Assemblies</b>				
5.930.0270.001	14' Low Profile Rotatable Spine Kit	Ea	\$8302	2569
5.930.0271.006	14' Low Profile Rotatable Spine Kit with six 2 3/8" x 10' pipes	Ea	\$9515	2912
5.930.0271.009	14' Low Profile Rotatable Spine Kit with nine 2 3/8" x 10' pipes	Ea	\$10122	3083
5.930.0271.012	14' Low Profile Rotatable Spine Kit with twelve 2 3/8" x 10' pipes	Ea	\$10729	3254
<b>14' (4m) 2-Level Rotatable Spine – Single Platform Assemblies</b>				
5.930.0275.101	14' Low Profile Spine Platform Kit	Ea	\$9561	2903
5.930.0276.106	14' Low Profile Spine Platform Kit with walkways and six 2 3/8" x 10' pipes	Ea	\$10775	3245
5.930.0276.109	14' Low Profile Spine Platform Kit with walkways and nine 2 3/8" x 10' pipes	Ea	\$11382	3416
5.930.0276.112	14' Low Profile Spine Platform Kit with walkways and twelve 2 3/8" x 10' pipes	Ea	\$11989	3588
<b>14' (4m) 2-Level Rotatable Spine – Double Platform Assemblies</b>				
5.930.0278.201	14' Low Profile Spine Platform Kit	Ea	\$10821	3236
5.930.0279.206	14' Low Profile Spine Platform Kit with dbl. walkways and (6) 2 3/8" x 10' pipes	Ea	\$12035	3579
5.930.0279.209	14' Low Profile Spine Platform Kit with dbl. walkways and (9) 2 3/8" x 10' pipes	Ea	\$12642	3750
5.930.0279.212	14' Low Profile Spine Platform Kit with dbl. walkways and (12) 2 3/8" x 10' pipes	Ea	\$13249	3921

Note: Attachment from spine to tower SOLD SEPARATELY.

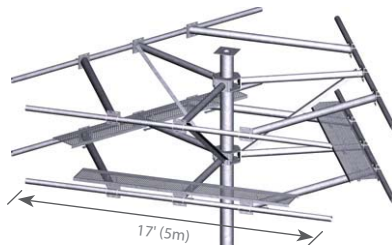
**Trylon** 21 South Field Drive, Elmira, ON N3B 0A6

P: 519.669.5421 F: 519.669.8912 E: info@trylon.com W: www.trylon.com



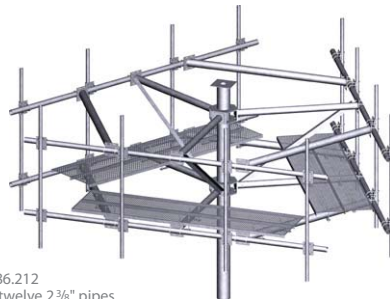
## Antenna Mounts

### 2-Level Rotatable Spine Mounts continued

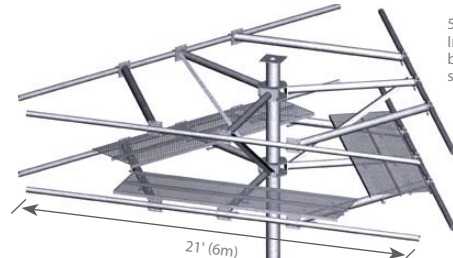


5.930.0285.101  
Includes grated walkways,  
but purchase pipe mounts  
separately on page 90

Custom Attachments  
are Ordered Separately

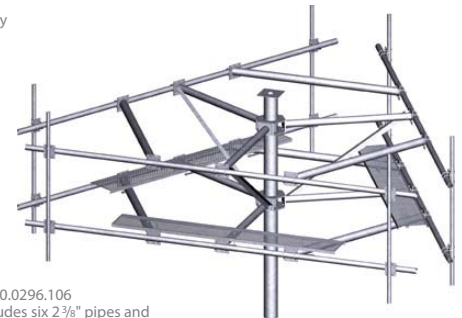


5.930.0286.212  
Includes twelve 2 3/8" pipes  
and  
double grated walkways



5.930.0298.201  
Includes two grated walkways,  
but purchase pipe mounts  
separately on page 90

Custom Attachments  
are Ordered Separately



5.930.0296.106  
Includes six 2 3/8" pipes and  
single grated walkways

Kit #	Description	Qty	List Price	Wt
<b>17' (5m) 2-Level Rotatable Spine Assemblies</b>				
5.930.0280.001	17' Low Profile Rotatable Spine Kit	Ea	\$8659	2712
5.930.0281.006	17' Low Profile Rotatable Spine Kit with six 2 3/8" x 10' pipes	Ea	\$9872	3055
5.930.0281.009	17' Low Profile Rotatable Spine Kit with nine 2 3/8" x 10' pipes	Ea	\$10479	3226
5.930.0281.012	17' Low Profile Rotatable Spine Kit with twelve 2 3/8" x 10' pipes	Ea	\$11086	3397
<b>17' (5m) 2-Level Rotatable Spine – Single Platform Assemblies</b>				
5.930.0285.101	17' Low Profile Spine Platform Kit	Ea	\$9918	3046
5.930.0286.106	17' Low Profile Spine Platform Kit with walkways and six 2 3/8" x 10' pipes	Ea	\$11132	3388
5.930.0286.109	17' Low Profile Spine Platform Kit with walkways and nine 2 3/8" x 10' pipes	Ea	\$11739	3560
5.930.0286.112	17' Low Profile Spine Platform Kit with walkways and twelve 2 3/8" x 10' pipes	Ea	\$12346	3731
<b>17' (5m) 2-Level Rotatable Spine – Double Platform Assemblies</b>				
5.930.0288.201	17' Low Profile Spine Platform Kit	Ea	\$11178	3380
5.930.0289.206	17' Low Profile Spine Platform Kit with dbl. walkways and (6) 2 3/8" x 10' pipes	Ea	\$12392	3722
5.930.0289.209	17' Low Profile Spine Platform Kit with dbl. walkways and (9) 2 3/8" x 10' pipes	Ea	\$12999	3893
5.930.0289.212	17' Low Profile Spine Platform Kit with dbl. walkways and (12) 2 3/8" x 10' pipes	Ea	\$13606	4065

Note: Attachment from spine to tower SOLD SEPARATELY.

Kit #	Description	Qty	List Price	Wt
<b>21' (6m) 2-Level Rotatable Spine Assemblies</b>				
5.930.0290.001	21' Low Profile Rotatable Spine Kit	Ea	\$9118	2903
5.930.0291.006	21' Low Profile Rotatable Spine Kit with six 2 3/8" x 10' pipes	Ea	\$10331	3246
5.930.0291.009	21' Low Profile Rotatable Spine Kit with nine 2 3/8" x 10' pipes	Ea	\$10938	3417
5.930.0291.012	21' Low Profile Rotatable Spine Kit with twelve 2 3/8" x 10' pipes	Ea	\$11545	3588
<b>21' (6m) 2-Level Rotatable Spine – Single Platform Assemblies</b>				
5.930.0295.101	21' Low Profile Spine Platform Kit	Ea	\$10377	3237
5.930.0296.106	21' Low Profile Spine Platform Kit with walkways and six 2 3/8" x 10' pipes	Ea	\$11591	3580
5.930.0296.109	21' Low Profile Spine Platform Kit with walkways and nine 2 3/8" x 10' pipes	Ea	\$12198	3751
5.930.0296.112	21' Low Profile Spine Platform Kit with walkways and twelve 2 3/8" x 10' pipes	Ea	\$12805	3922
<b>21' (6m) 2-Level Rotatable Spine – Double Platform Assemblies</b>				
5.930.0298.201	21' Low Profile Spine Platform Kit	Ea	\$11637	3571
5.930.0299.206	21' Low Profile Spine Platform Kit with dbl. walkways and (6) 2 3/8" x 10' pipes	Ea	\$12851	3913
5.930.0299.209	21' Low Profile Spine Platform Kit with dbl. walkways and (9) 2 3/8" x 10' pipes	Ea	\$13458	4084
5.930.0299.212	21' Low Profile Spine Platform Kit with dbl. walkways and (12) 2 3/8" x 10' pipes	Ea	\$14065	4256

Note: Attachment from spine to tower SOLD SEPARATELY.